

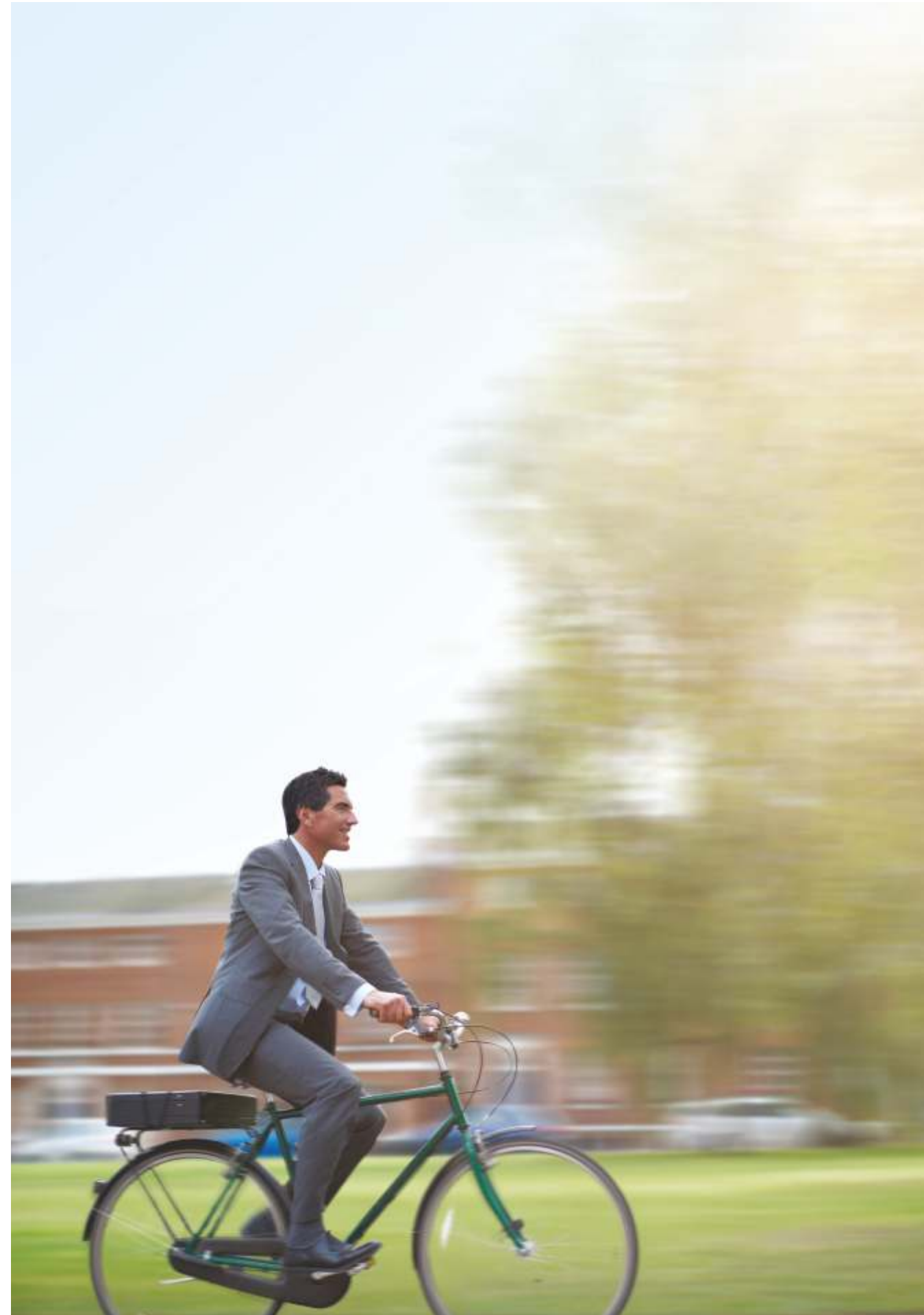
 **LODHA**  
**MERIDIAN**  
Global living

Sales Office  
Lodha Meridian,  
Eden Square,  
Off KPHB Road,  
Near HITEC City MMTS Station,  
Hyderabad 500072

Corporate Office  
Lodha Excelus,  
N.M. Joshi Marg, Mahalaxmi,  
Mumbai 400 011  
T: +91 - 22 2302 4400  
F: +91 - 22 2300 0693  
[www.lodhagroup.com](http://www.lodhagroup.com)

Life today takes us across borders. Whether it's a quick business trip to Europe or a family getaway to an island off Indonesia, we're constantly exposed to new cultures, cuisines and ways of living. We learn to take some of the comforts for granted and gradually get used to the many luxuries experienced along the way. Mundane residential genericism has always put a dampener on returning home. Until now, that is.





The International way of life  
has landed here.





A luxurious  
headquarters for today's  
global citizens.

WELCOME TO LODHA MERIDIAN.



At the heart of the emerging new business centre of Hyderabad, these twin, thirty-storey towers fuse beautiful façades with a generous dose of public space, thanks to the architects' innovative approach to construction. The various units, including two and three-bed apartments, are intricately planned, with strict attention to quality materials and a wise space allocation that conveniently adapts to contemporary living needs.





The bedrooms are ample, the kitchens are spacious, the amenities are aplenty, and the life within raises the bar in one of the most elegant areas of the city.

A  
CONTEMPORARY  
LIVING SPACE.  
SET IN A  
STYLISHLY MODERN  
LOCATION.

Lodha Meridian is located in the city's most energetic and sought-after new area – Eden Square. It's just minutes away from HITEC City and within close proximity to social hubs like Jubilee Hills and Banjara Hills.

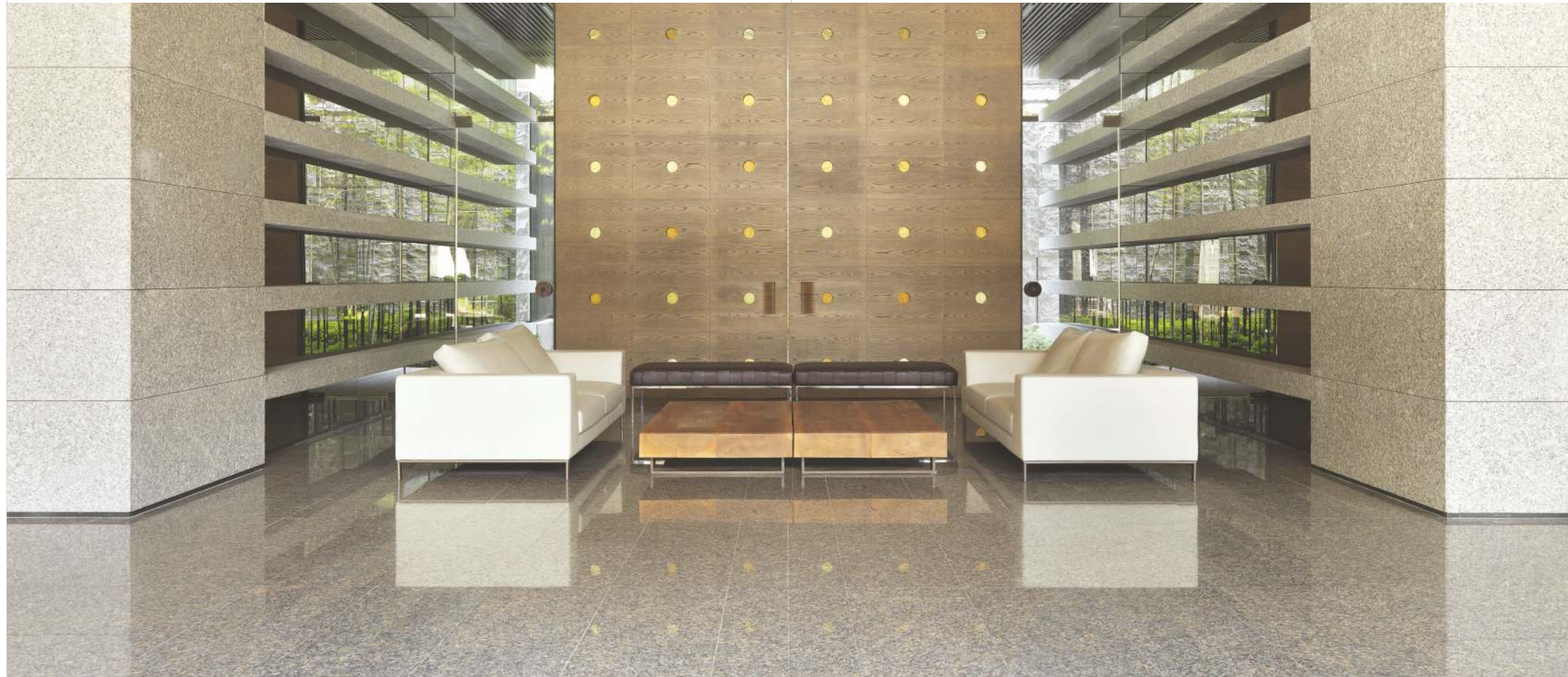
The atmosphere is upbeat and fashionable, just like the people who choose to live around here.





YOU DON'T JUST ENTER  
LODHA MERIDIAN, YOU ARRIVE.

Driving in to the property is as much a thrill as owning a part of it. Before the magnificent towers can leave an impression, the surroundings will. Communal gardens, shaded sit outs, water bodies and lush, landscaped greens roll out a refreshing welcome to the dominating entrance lobby that wows with its serenity and space.





THE GLOBAL LIFE JUST GOT LOCAL.

Designer landscapes. Wooden sun decks. Wi-Fi hotspots.  
It's all here now.



CHECK-IN  
TO A LIFETIME OF  
PLEASURE.

The apartments exhibit modern design that challenges the stagnant approach that had taken root in the city's opulent standards. Residences are open from three sides – making undisturbed views an inherent feature – whilst each apartment is indulgent in every way. Besides beautiful sky decks, there's Marbltal covered living and dining areas, wooden flooring in all bedrooms, generous bathrooms with Roca and Kohler trimmings and lavish kitchens. Not to forget urban necessities like air-conditioning and Wi-Fi thrown in for yesterday's sake.







NEW YORK.  
SINGAPORE. ITALY.

Your home would fit in anywhere.



## YOUR NEIGHBOURHOOD VIEW STRETCHES ACROSS THE CITY.

Living in a high-rise residence is not everyone's cup of tea. Certainly if you don't enjoy all-encompassing views, and the peace and quiet that comes from distancing yourself from noise and air pollution. Tranquil evenings, the crisp morning air or glorious sunsets take some getting used to.



THERE IS A DOWNSIDE TO LIVING HERE.

Staying in stylish hotel suites will no longer be a pleasure.



## EXPERIENCE AN ALL NEW HIGH.

Thirty floors above the ground, the sky lounge emulates swish rooftop bars found in Barcelona, Singapore and Shanghai. It deliberately strives for a low-key atmosphere where residents will be equally at home sipping a few cocktails with friends, or coming in alone with an iPad. This glass-walled rooftop sanctuary offers views of the city from sumptuous vantage points and includes a discotheque, library and a coffee bar.







LIVE IT UP.  
LIVE IT DOWNSTAIRS  
TOO.

An elevator ride away from each private apartment lies yet another world of privileges. The community space below is dotted with luxurious sun-soaked surprises like swimming pools, water sport activities and a lawn for barbeques and parties. Adrenaline scales up at the clubhouse with online gaming zones, badminton courts and a high-power gym. Should work come before play, there's a business centre fitted with every necessary gadget and gizmo to stay wired.





BALANCING  
WORK AND PLAY  
JUST  
GOT EASIER.

Conference facilities.  
Barbeque gardens. Gaming lounges.



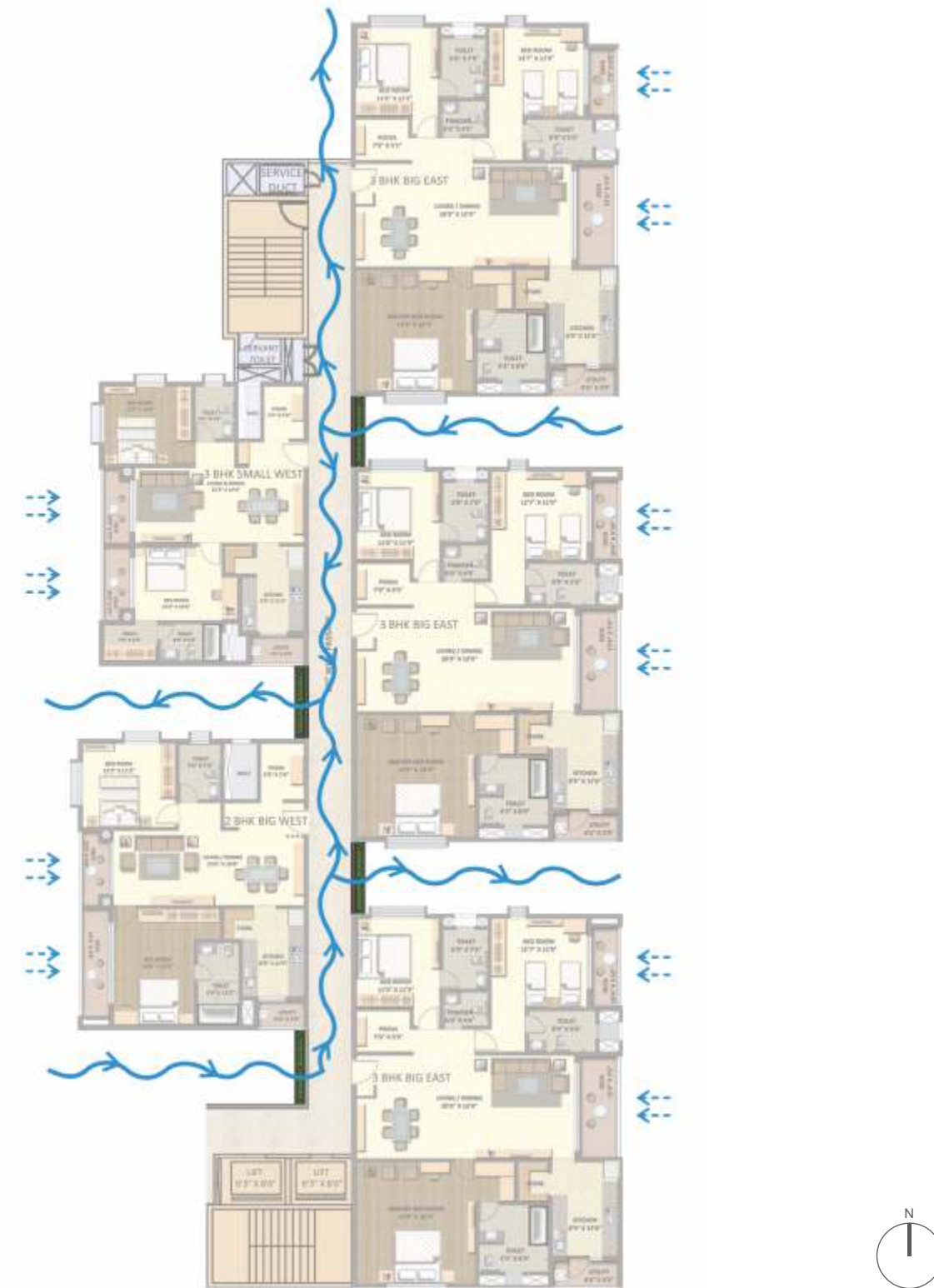
## FAMILY MEMBERS WILL ENVY ONE ANOTHER.

You can't take playtime seriously enough, as your children will discover in the expansive kids' play area. A special rubber surface ensures that safety is also woven into the fun. Senior family members too will feel a spring in their step, with special conveniences like the elders' corner, a Ganesha temple and a sit-out pavilion.



## EVEN THE AIR AND LIGHT IS NOTHING BUT THE BEST.

Relying solely on air-conditioning is passé. With specially engineered cross-ventilation paths, your home will stay cool despite the summer's best efforts. And natural, bright lighting relegates gloomy ambiances to a thing of the past.



## LANDSCAPE MASTER PLAN:

- |                        |                   |                     |                   |
|------------------------|-------------------|---------------------|-------------------|
| 1. Entrance Gate       | 5. Water Feature  | 9. Play Ground Area | 13. Pool Deck     |
| 2. Drop-off Area       | 6. Temple         | 10. Badminton Court | 14. Kids' Pool    |
| 3. Car park            | 7. Stepping Stone | 11. Cricket Court   | 15. Swimming Pool |
| 4. Club House Drop-off | 8. Pavilion       | 12. Party Lawn      | 16. Feature Wall  |



## LIVING IN THE SKY? THE PRIVILEGES GO ON FOR MILES.

### INTERNAL AMENITIES

Fully air conditioned and Wi-Fi homes  
Laminated wooden flooring in all bedrooms  
Marbltal in dining/living and passage  
Lavish sundecks  
Imported bath fittings  
(Jaquar, Roca/Kohler or equivalent)  
Separate pooja room  
French windows in select master bedrooms  
Designer ceramic tiles in all bathrooms  
Spacious storeroom in kitchen  
Vaastu compliant homes  
Anodized aluminium finish on railings  
Servant's room every 3 floor  
Homes with 3 sides open  
Spacious utility area

### EXTERNAL AMENITIES

Wi-Fi terrace sky lounge  
Lounge  
Discotheque  
Pantry  
  
Clubhouse and recreation facilities  
Swimming pool  
Adults' swimming pool  
Kids' swimming pool  
Gym  
Café  
Library  
Poolside barbeque area  
Kids' play area  
Elders' corner

### Party lawn

Multipurpose hall  
Ganesha temple

### G.A.M.E.Z. (Gaming & Modern Entertainment Zone)

Networked gaming platforms with motion gaming  
Pool/Snooker  
Foosball (Table Football)  
Ping pong  
Water polo  
Pool volleyball  
Cricket pitch  
Badminton court  
Other indoor games (chess, carrom, etc.)

### ARCHITECTURAL FEATURES

Contemporary facade  
Quake resistant structure  
Double height entrance lobby  
Open to sky passages with planters

### ENVIRONMENT PROTECTION & SAFETY

Provision of rainwater harvesting  
Sewage treatment plan  
Water recycling facility  
Fire sprinkler system (in common areas)  
CCTV monitoring (in common areas)  
D.G. power backup (in common areas)



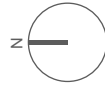
Actual render of the façade.



2 BHK (TYPE I)



2 BHK (TYPE II)



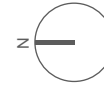
Disclaimer : Tolerance of +/-2% is possible in the unit areas on account of Design and Construction variances



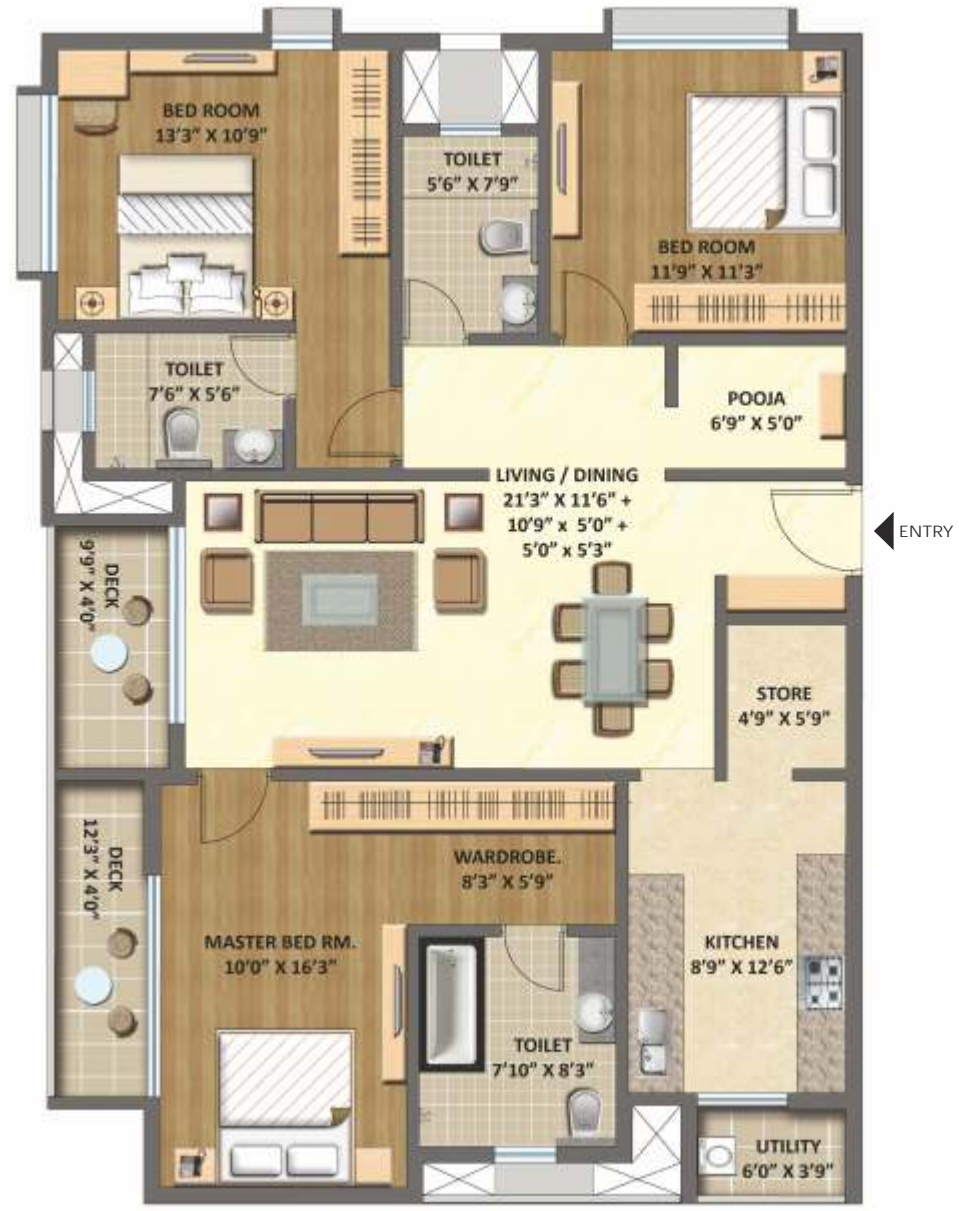
2 BHK LUXE (TYPE I)



2 BHK LUXE (TYPE II)

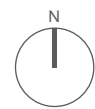


Disclaimer : Tolerance of +/-2% is possible in the unit areas on account of Design and Construction variances



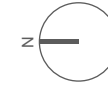
3 BHK (TYPE I)

Disclaimer : Tolerance of +/-2% is possible in the unit areas on account of Design and Construction variances



3 BHK (TYPE II)

3 BHK (TYPE III)



Disclaimer : Tolerance of +/-2% is possible in the unit areas on account of Design and Construction variances



3 BHK LUXE (TYPE I)

Disclaimer : Tolerance of +/-2% is possible in the unit areas on account of Design and Construction variances



3 BHK LUXE (TYPE II)

Disclaimer : Tolerance of +/-2% is possible in the unit areas on account of Design and Construction variances





## THE DEVELOPERS

### The Lodha Group

Established in 1980, the Lodha Group is Mumbai's premier real estate developer. The Group is currently developing in excess of 30 million sq.ft. of prime real estate, with over 27 projects in and around Mumbai, from Napean Sea Road to Dombivali. With Lodha Bellezza, an unparalleled super-luxury residential project and Casa Paradiso, a mid-income luxury project in Hyderabad, the Group has expanded geographically, and is soon expected to launch its first project in Pune.

The Lodha Group has several landmark developments to its credit, including World One - the world's tallest residential tower, Lodha Bellissimo - the only Indian residential development to feature amongst the top 1000 landscapes in the world, and Palava - 21st century India's largest planned city, spread over 3,600 acres. The Group has also made history by recording the biggest land deal in India till date, buying a plot in Wadala for ₹ 4,053 crore, from the Mumbai Metropolitan Region Development Authority (MMRDA).

Pioneering new trends in the market, the Group introduced CASA by Lodha, offering the mid-income consumer luxury homes within easy reach. The Group also introduced the concept of branded office spaces, with offerings at every level, from world-class corporate offices to large-scale office campuses to signature boutique offices for growing businesses.

The Group's tremendous success has been marked by financial investments from the finest global investors, including JP Morgan, Deutsche Bank, HDFC Ventures and ICICI Ventures.

The Group currently employs over 2,300 associates and provides site-based employment to over 25,000 workers. And going beyond its role as a premier real estate developer, the Lodha Group has been a socially responsible corporate, focusing on education as the best medium to enrich society.

### Other accomplishments include:

- Winner of International Property Awards, 2011<sup>^</sup> in association with Bloomberg
  - Lodha Fiorenza, Mumbai for 'Best high-rise development'
  - Lodha Bellezza, Hyderabad for 'Best high-rise architecture'
  - Lodha Golflinks, Palava for 'Best residential golf development'

- Good Practice UN Habitat Business Award for Integrated Planning, for Casa Bella, an integrated township at Palava

- Best Developer involved in High-end Residential Properties across India, by constructionsourceindia.com

- Leaders of Indian Infrastructure & Construction Award by Economic Times ACETECH

### Projects completed

Lodha Bellissimo, Mahalaxmi | Lodha Excelus, Mahalaxmi  
iTHINK by Lodha, Kanjurmarg | iTHINK by Lodha, Thane  
Lodha Costiera, Napean Sea Road | Lodha's Château Paradis, Worli Seaface | Lodha Aria, East Parel | Lodha Grandeur, Prabhadevi | Lodha Palazzo, JVPD Scheme, Juhu  
Lodha Paradise, Thane | Lodha Goldcrest, Lonavala

### Ongoing projects - Office spaces

Lodha Supremus, Upper Worli | Lodha Supremus, Kanjurmarg  
Lodha Supremus, Thane

### Ongoing projects - Residences

Lodha Primero, Mahalaxmi | World One, Upper Worli  
World Crest, Upper Worli | Lodha Fiorenza, Goregaon  
Lodha Aurum, Kanjurmarg | Lodha Aurum Grande, Kanjurmarg  
Lodha Imperia, Bhandup | Lodha Aristo, Thane  
Lodha Luxuria, Thane | Lodha Aqua, Dahisar  
Lodha Golf links, Palava | Lodha Bellezza, Hyderabad  
Casa Univis, Thane | Casa Ultima, Thane | Casa Royale, Thane  
Casa Essenza, Dahisar | Casa Bella, Palava | Casa Bella Gold, Palava | Casa Rio, Palava | Casa Paradiso, Hyderabad

### Our projects to come

Lodha Supremus, Powai | Residences at Walkeshwar, Prabhadevi, Andheri and Thane | Bungalows at Palava and Pune

<sup>^</sup>Asia-Pacific region