



Nurtured by  
Nature...



**RPS CITY – A COMPLETE CITY FOR A COMPLETE LIFE.**

The RPS City will rise as an integrated township of 100 acres, offering enchanting spacious independent floors and luxurious group housing options. To be located in the heart of Greater Faridabad, this green, oxygen-rich habitat will offer every amenity within close range of your preferred home. Schools of high repute, healthcare facility as well as a thriving commercial complex will be provided to make life easy. For leisure and sports, a spacious clubhouse with swimming pool, gym and spa, is on the anvil. Also on the blueprint of RPS City are day- night putting greens, jogging tracks and meditation centre in 100% secure environs. As dreams move towards reality, the future will usher in Complete Living in the uniquely landscaped Complete City.





Great Connectivity is the key accentuate in RPS City. Flyovers, steadily progressing Expressways, the Metro link all add up to making traveling to any part of Delhi or NCR peaceful and hassle-free.

### Advantage Location

- Situated in the heart of Greater Faridabad
- In close vicinity to Most Developed Sectors-14,15,16
- 5 Km from Mathura Road (Bakhhal Chowk)
- 3 Km from Express Highway for Noida & Greater Noida
- 11 Km from Delhi Badarpur Border
- 40 min. drive (Approx.) from International & Domestic Airport
- 5 min drive (Approx) from upcoming Metro Station
- 25 min. drive (Approx.) from South Delhi

### The World Within 5 Kms

- World- Class Medical & Health Care.
- Educational Institutions for Medical, Engineering & Law.
- Schools like Vidya Sanskar International School, Apeejay, MVN, DPS, Ryan International School.
- Malls & Multiplexes.

PEACE & CONVENIENCE, ALL WITHIN REACH



A mere 45 minute drive to the IGI Airport

The upcoming Metro will add to the easy commuting

## A Dream Destination

Savana-An exquisite group housing complex of almost 2300 units, spread across 50 acres ranging from apartments to plush penthouses. Encompassing all luxury amenities, the locale will offer shopping arcades, healthcare facilities and many other conveniences within the grounds. To ensure highest standards of education for the residents, Savana will also house the framed KR Mangalam High School. Construction is progressing at a rapid pace and possession is slated to be handed over soon.



## Pure INDULGENCE

Take a deep breath;  
And forget all your worries.

Savana offers new lease of life. It has plenty of revitalizing options available within its vicinity. Rejuvenate your body by taking a dip in the cool azure water that would not just invigorate your soul but also completely relax all your senses. So take a splash and feel fresh anytime you want

- Day & Night Golf putting greens
- Gym
- Sports Club
- Sauna/Spa
- Kids Pool
- Swimming Pool
- Jacuzzi
- Multi-cuisine Restaurants



Planned with a

## HUMAN ANGLE



- Kids play area
- Separate jogging tracks
- Health parks
- Space for yoga & meditation
- Integrated car parking
- Rain water harvesting
- Solar water heater



## UNIVERSAL SPECIFICATIONS

LOCATION	FLOORING	WALLS	INTERNAL DOORS	EXTERNAL DOORS & WINDOWS	OTHERS
Bedrooms	Vitrified Tiles/Marble	Pleasant shades of OBD*	Flush shutter Panel Door with Hard Wood Frames	Hard wood/Powder Coated Aluminum Doors & Windows	—
Living/Dining	Vitrified Tiles/Marble	Pleasant shades of OBD*	Flush shutter Panel Door with Hard Wood Frames	Hard wood/Powder Coated Aluminum Doors & Windows	—
Kitchen	Anti Skid Ceramic Tiles	2' high Ceramic Tiles above working platform, Rest OBD*	Flush shutter Panel Door with Hard Wood Frames	Hard wood/Powder Coated Aluminum Doors & Windows	Granite Counter with SS Sink and provision for Electric Chimney
Toilets	Anti Skid Ceramic tiles	Ceramic Tiles and OBD* in Pleasant Shades	Flush shutter Panel Door with Hard Wood Frames	Hard wood/Powder Coated Aluminum Doors & Windows	CP fittings, Granite/ Marble Counter, Mirror
Balcony	Anti Skid Ceramic tiles	OBD*	—	—	—
Servant Room	Ceramic tiles	OBD*	Flush shutter Panel Door with Hard Wood Frames	Hard wood/Powder Coated Aluminum Doors & Windows	—
Corridor/ Lobby	Vitrified Tiles/Selected Marble/Kota	Selected Marble/ Granite Cladding & OBD*	—	—	Lift fascia in attractive stone cladding
External Finish	—	—	—	—	Permanent textured Paint finish

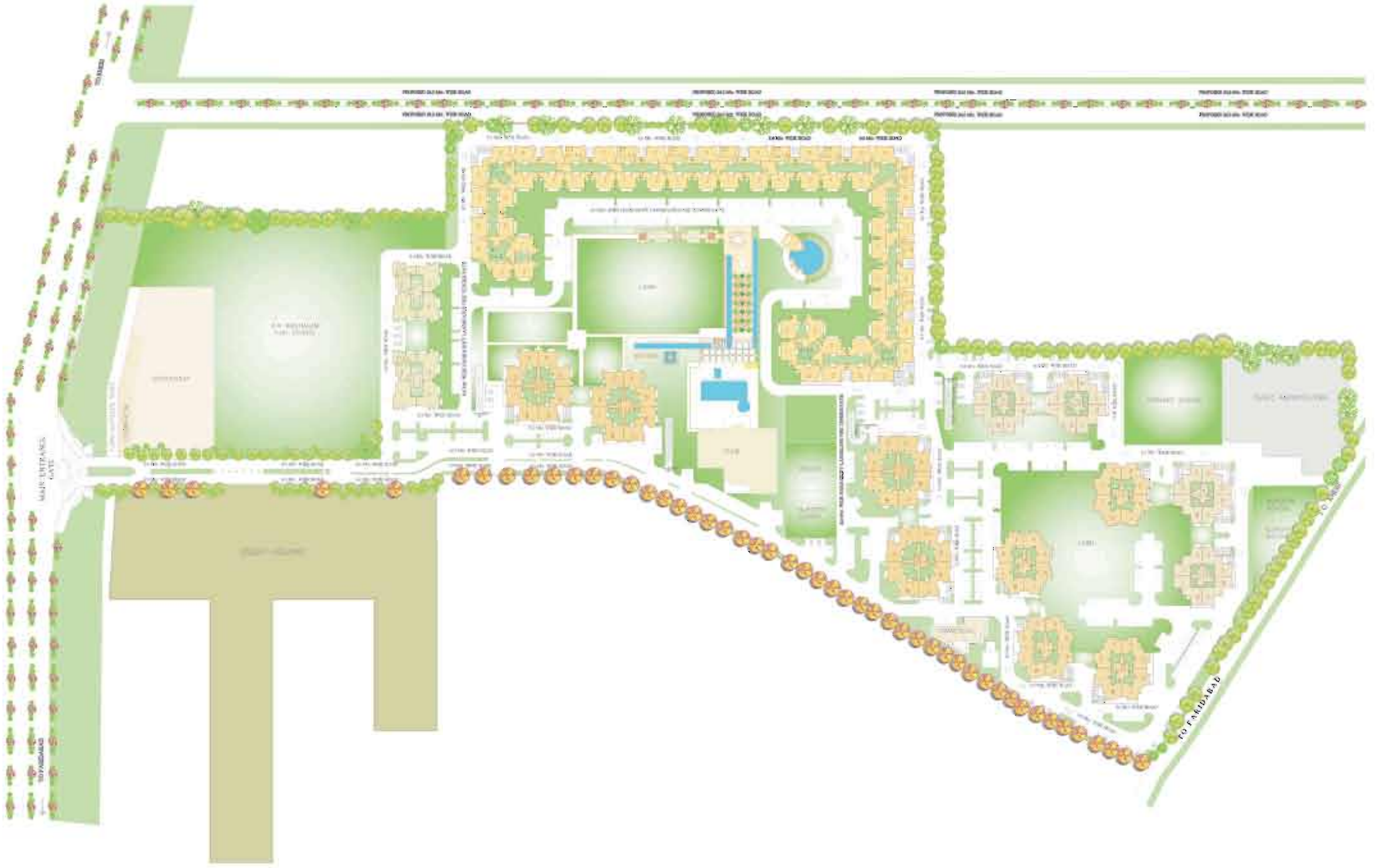
## DELUXE SPECIFICATIONS

LOCATION	FLOORING	WALLS	INTERNAL DOORS	EXTERNAL DOORS & WINDOWS	OTHERS
Bedrooms	Verified Tiles/Marble Wooden Flooring in Master Bedroom	Pleasant Shades of OBD*	Flush Shutter Pannel Door with Hardwood Frames	Hardwood/Powder Coated Aluminum Doors & Windows	Ceiling Fans, Decorative Light Fittings, Moduler Cupboards in all bedrooms
Living/Dining	Verified Tiles/Marble	Pleasant Shades of OBD*	Flush Shutter Pannel Door with Hardwood Frames	Hardwood/Powder Coated Aluminum Doors & Windows	Ceiling Fans, Decorative Light Fittings
Kitchen	Anti Skid Ceramic Tiles	2' high ceramic tiles above working platform rest OBD*	Flush Shutter Pannel Door with Hardwood Frames	Hardwood/Powder Coated Aluminum Doors & Windows	Exhaust Fans, Granite or Equivalent counter, woodwork below counter, SS Sink with Drain Board, Provision for Electric Chimney
Toilets	Anti Skid Ceramic Tiles	Ceramic Tiles & OBD* in Pleasant Shades	Flush Shutter Pannel Door with Hardwood Frames	Hardwood/Powder Coated Aluminum Doors & Windows	Granite Counter, CP Fittings, Mirror, Soap Dish, Tower Rod, Shower Cubicle & Geysar in Master Bedroom
Balcony	Anti Skid Ceramic Tiles	OBD*	—	—	—
Servant Room	Ceramic Tiles	OBD*	Flush Shutter Pannel Door with Hardwood Frames	Hardwood/Powder Coated Aluminum Doors & Windows	—
Corridor/Lobby	Verified Tiles/Selected Marble/Kota	Selected Marble/ Granite cladding & OBD*	—	—	Lift Fascia in attractive stone clading
External Finish	—	—	—	—	Permanent textured paint finish

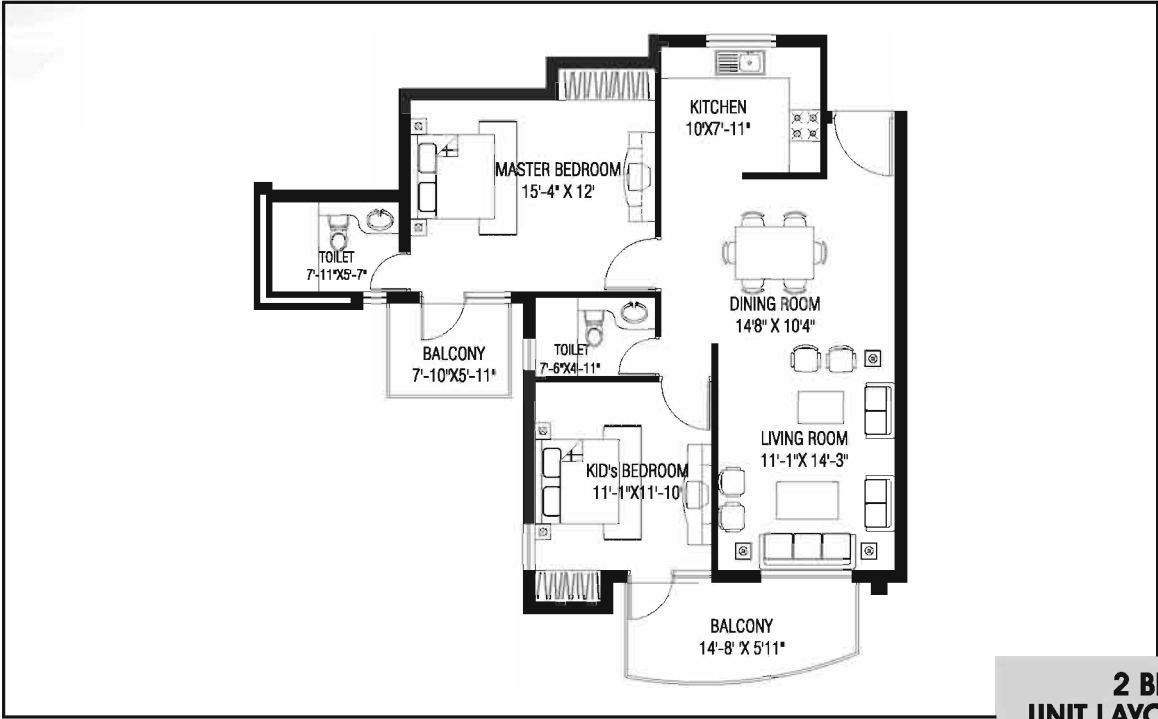
**Note:**

- All units are sold on universal specification only except Penthouses & 4+1 Bedroom units.
- Deluxe specifications are available only on written accepted request on additional payment.

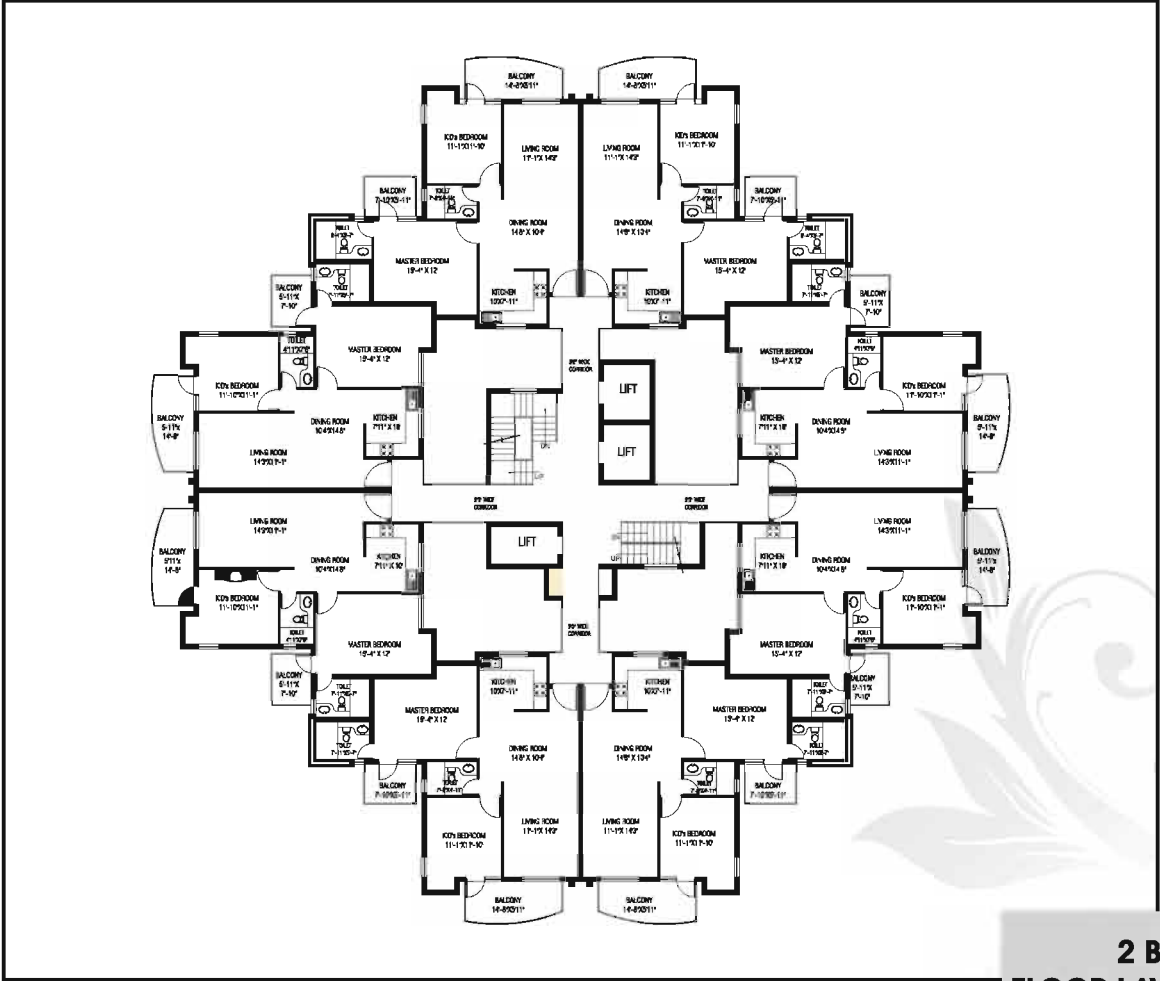
\*OBD: Oil Bound Distemper







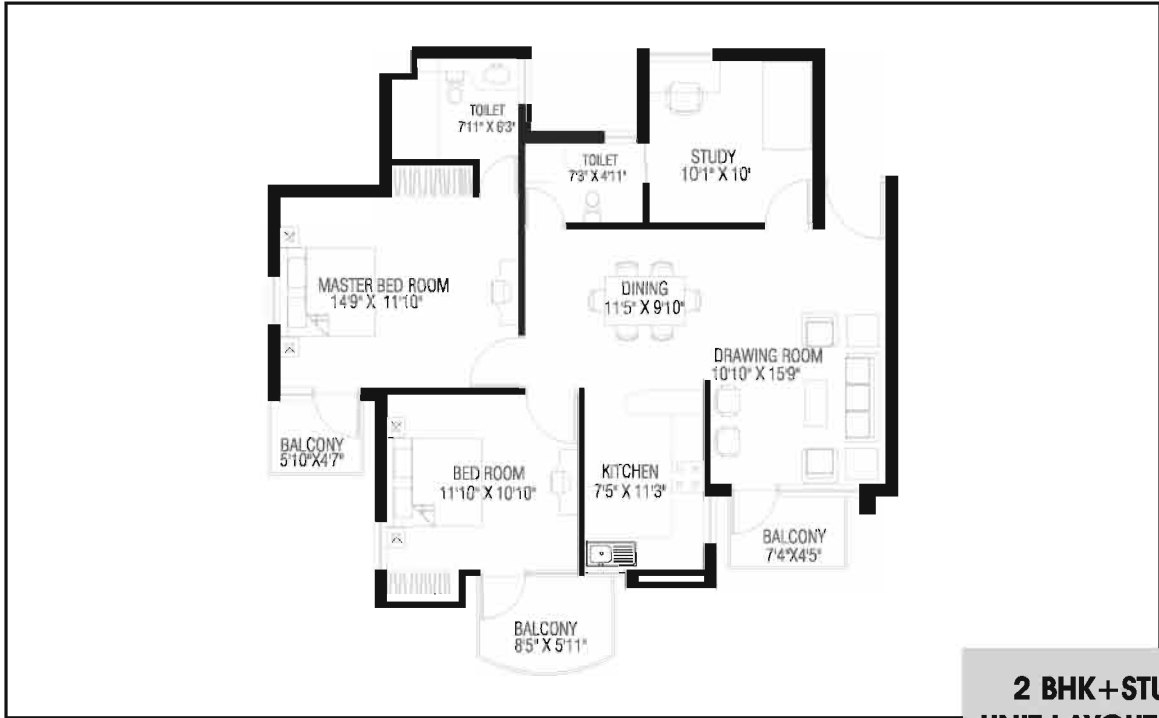
**2 BHK  
UNIT LAYOUT PLAN  
Area= 1250 SQ. Ft.**



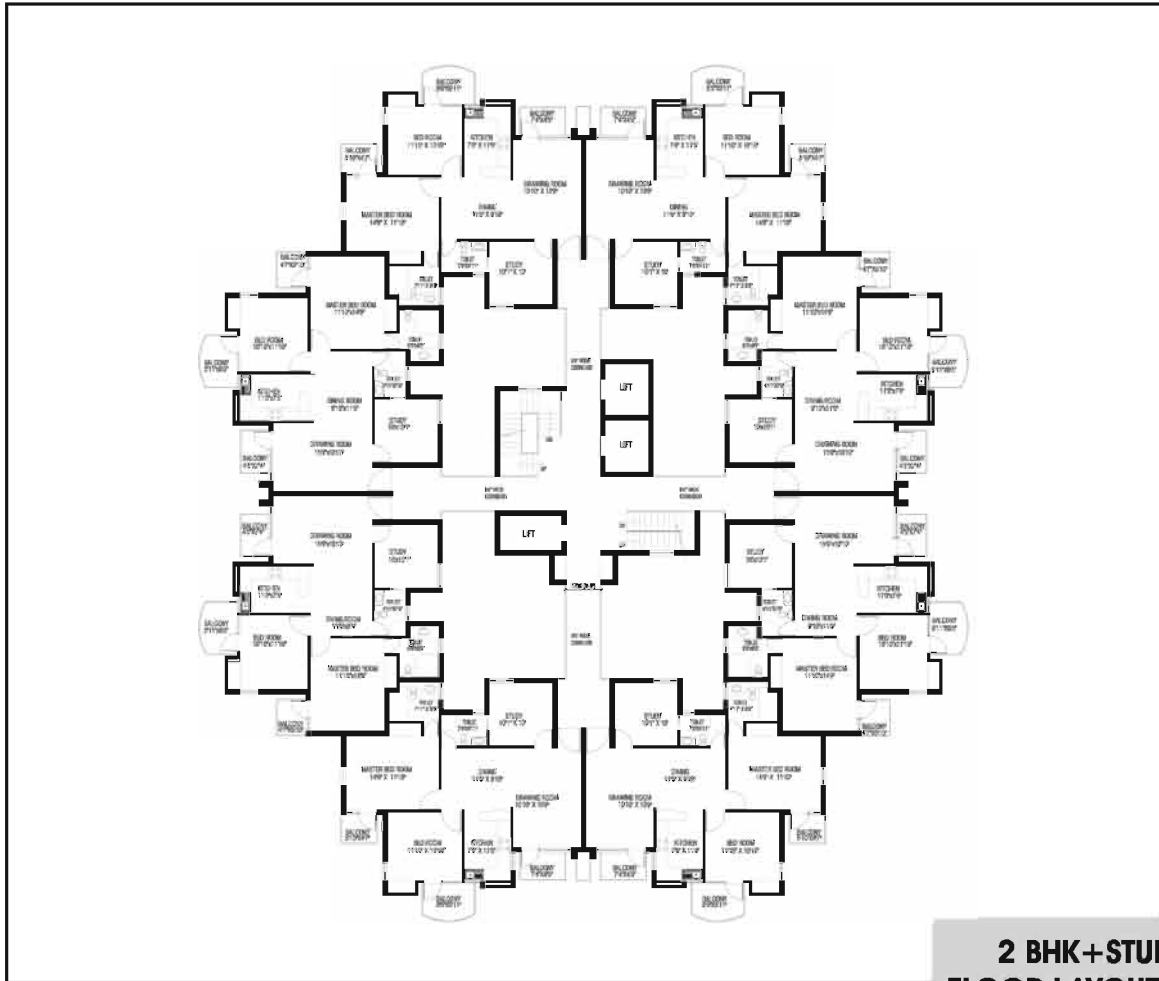
**2 BHK  
FLOOR LAYOUT PLAN**

1 Meter = 3.28 Feet  
1 Sq.Meter = 10.76 Sq.Feet

# Floor Plans

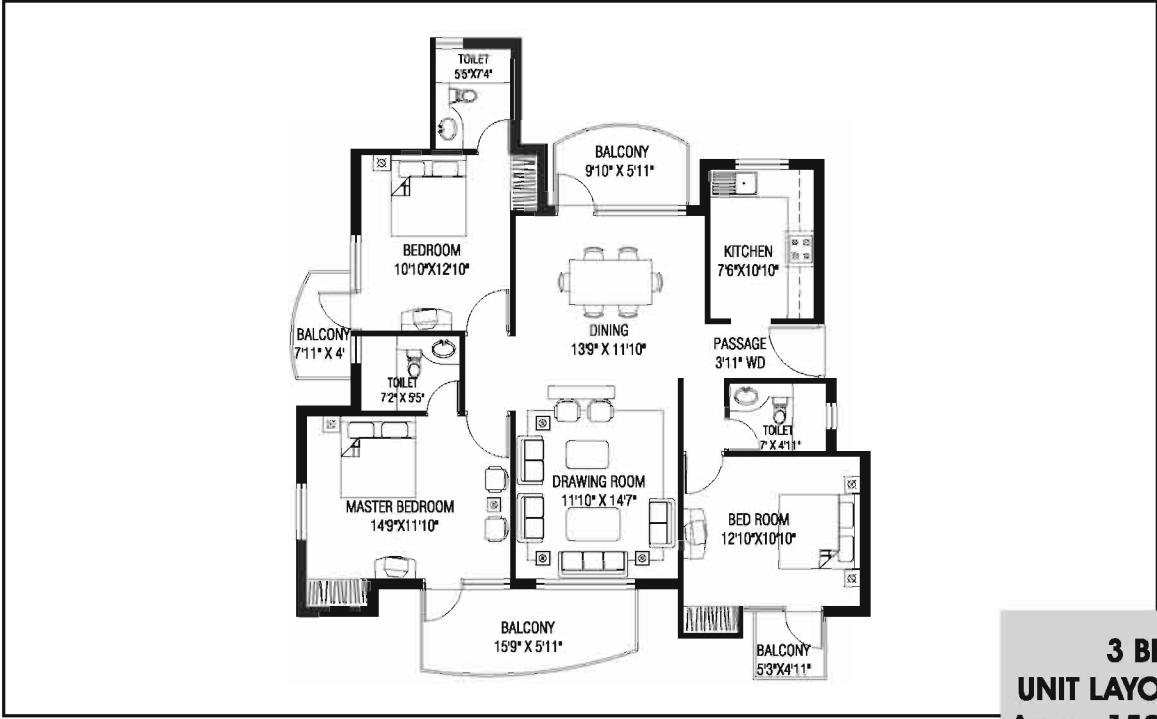


**2 BHK+STUDY  
UNIT LAYOUT PLAN  
Area= 1303 SQ. Ft.**

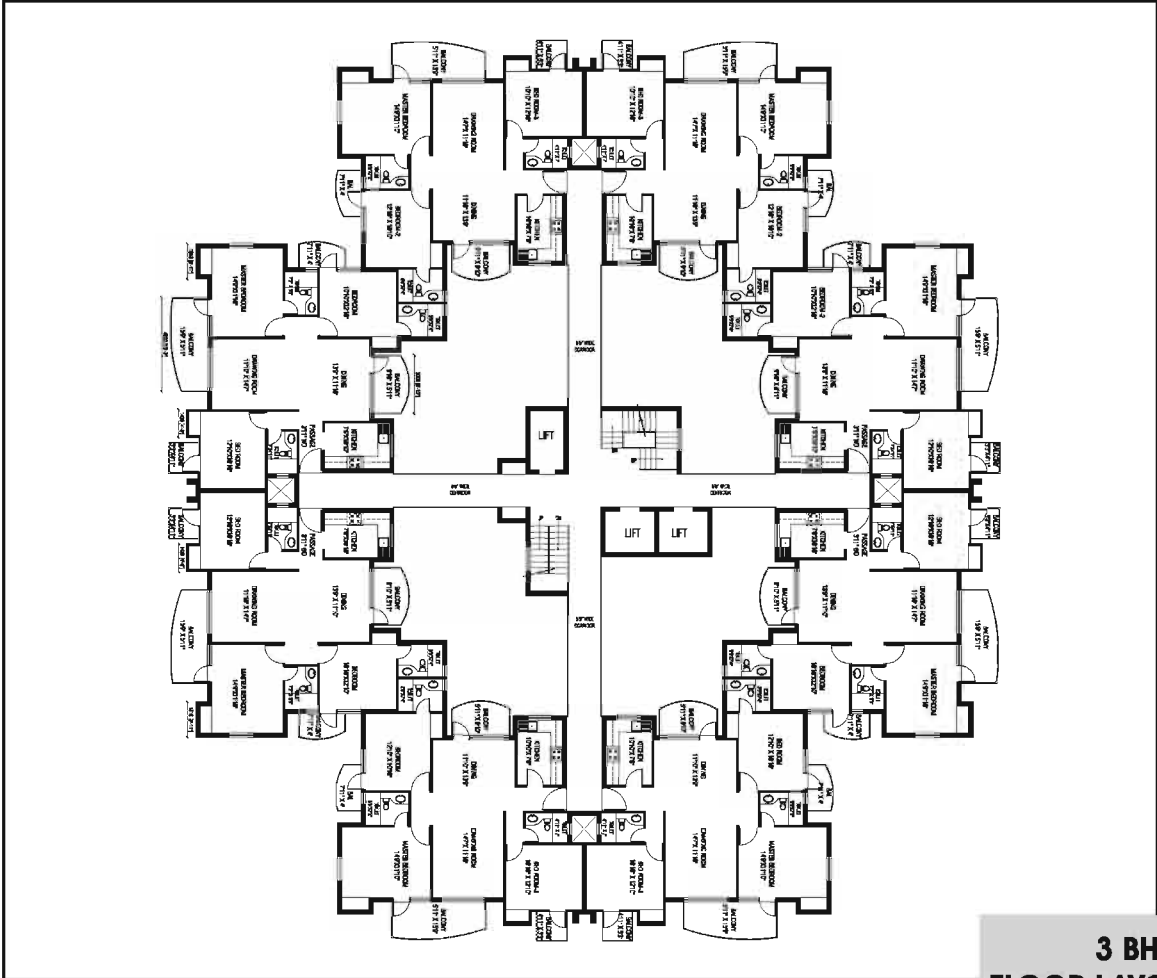


**2 BHK+STUDY  
FLOOR LAYOUT PLAN**

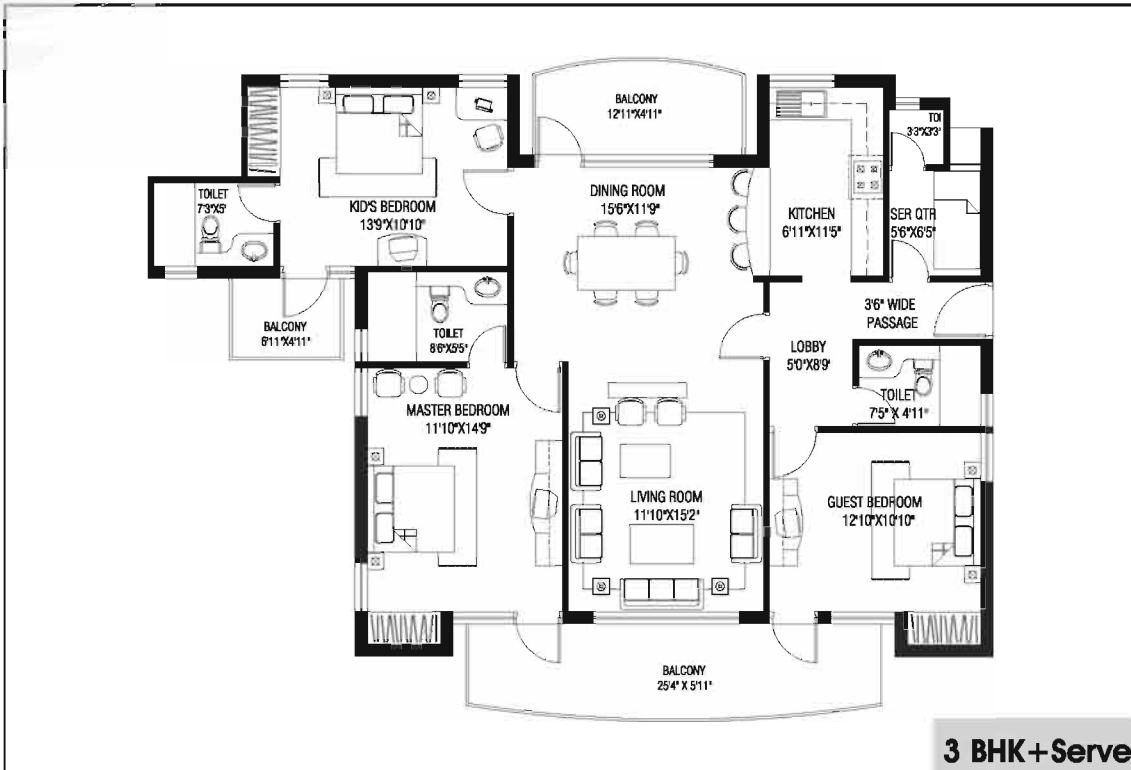
# Floor Plans



**3 BHK  
UNIT LAYOUT PLAN  
Area= 1590 SQ. Ft.**



**3 BHK  
FLOOR LAYOUT PLAN**



**3 BHK + Servent Quarter  
UNIT LAYOUT PLAN  
Area = 1791 SQ. Ft.**



**3 BHK + Servent Quarter  
FLOOR LAYOUT PLAN**



**RPS City**  
*Integrated city for wholesome living.*

Sector - 88, Greater Faridabad

**Location Map**  
 (Not to scale)

**DISCLAIMER :** This Brochure is purely conceptual & not a legal offering. Further the promoters/architects reserve the right to add / delete any details/specifications/elevation mentioned if so warranted by the circumstances.



**RPS INFRASTRUCTURE LIMITED**

**Corporate Office:**

A - 193, 1st Floor, Okhla Industrial Area, Ph - 1, New Delhi - 110020, Telefax : 011-40543200  
 Email : info@rpsgroupindia.com, Visit us at : www.rps-savana.com, www.rpsgroupindia.com

**Site Office:**

RPS City, Sector-88, Greater Faridabad, Ph.: 0129-3211448

Architect: Vastunidhi, B-28, Sector-44, Noida, Ph.: 0120-3206899, E-mail: vastunidhi@gmail.com