



ATS GREENS VILLAGE



1 EXPRESS WAY
SECTOR 93
NOIDA

for more details : info@atsgreens.com





ATS GREENS VILLAGE

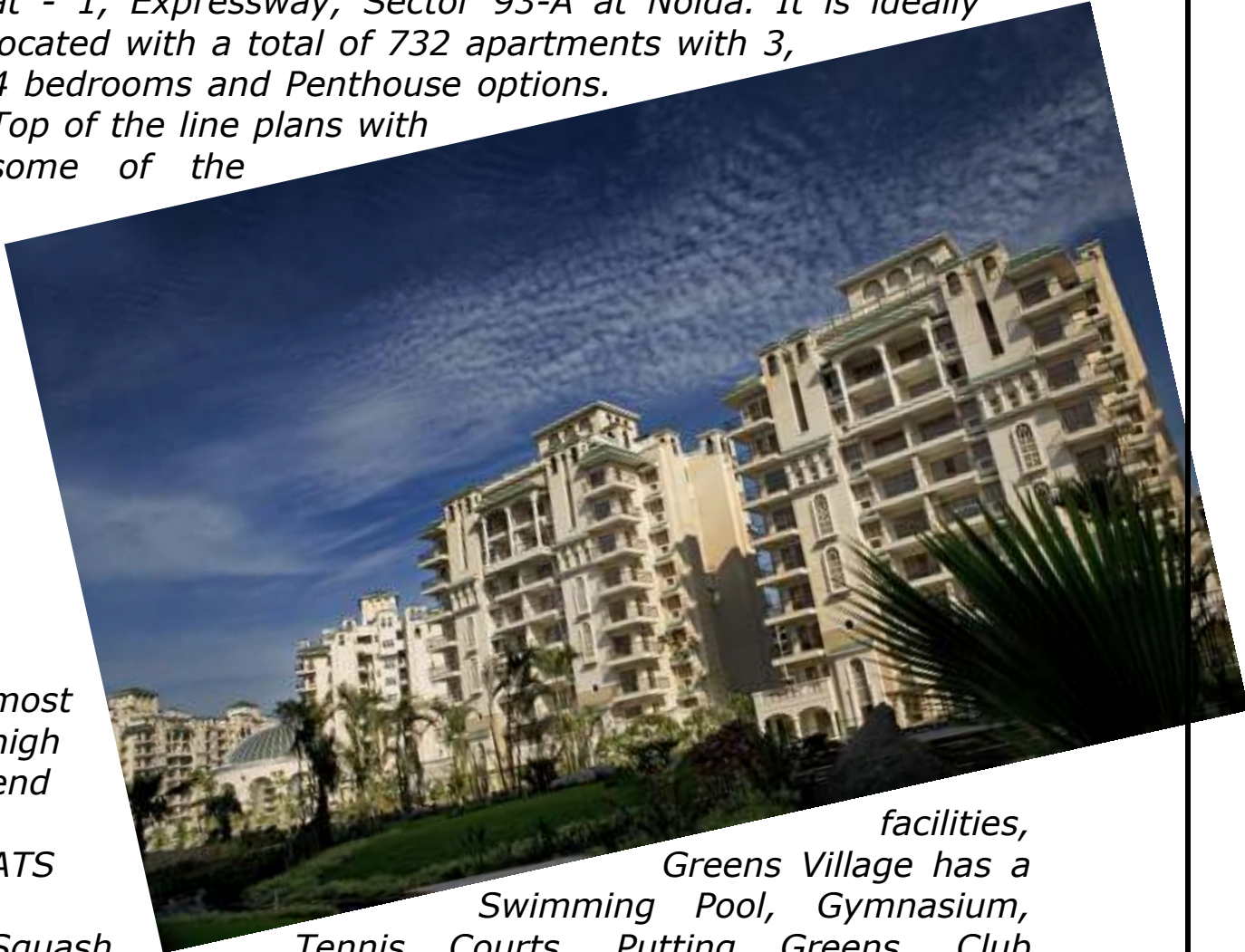
Steadily growing into a beautifully planned contingent of 25 towers, ATS Greens Village is spread over 17 acres of land at - 1, Expressway, Sector 93-A at Noida. It is ideally located with a total of 732 apartments with 3, 4 bedrooms and Penthouse options.

Top of the line plans with some of the

most high end

ATS

facilities, Greens Village has a Swimming Pool, Gymnasium, Squash, Tennis Courts, Putting Greens, Club House, Shopping Arcade, 100 % power back up and 24 hour security. Indians, Sports persons, Service & Business class, professional Artists, Architects, Designers, IT specialists, Industrialists and personalities have made ATS their first choice.

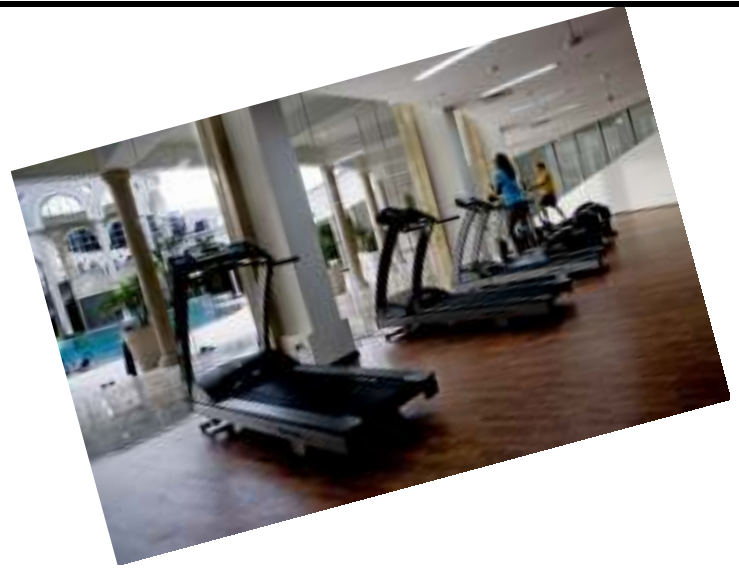




FACILITIES

Essentials

- 24 Hours Treated Water
- 100 % Power Backup
- Broad Band connectivity
- Wired phone
- Cable TV



Security

- 24 Hrs Security
- CCTV installed
- Fire Fighting Systems
- High Walled Compound.

Community

- Air conditioned
-



- Community Hall
- Library
- Club House
- Shopping Arcade
- Café

Recreational

- Swimming Pool
- Gymnasium
- Joggers Track
- Squash Court
- Tennis Court

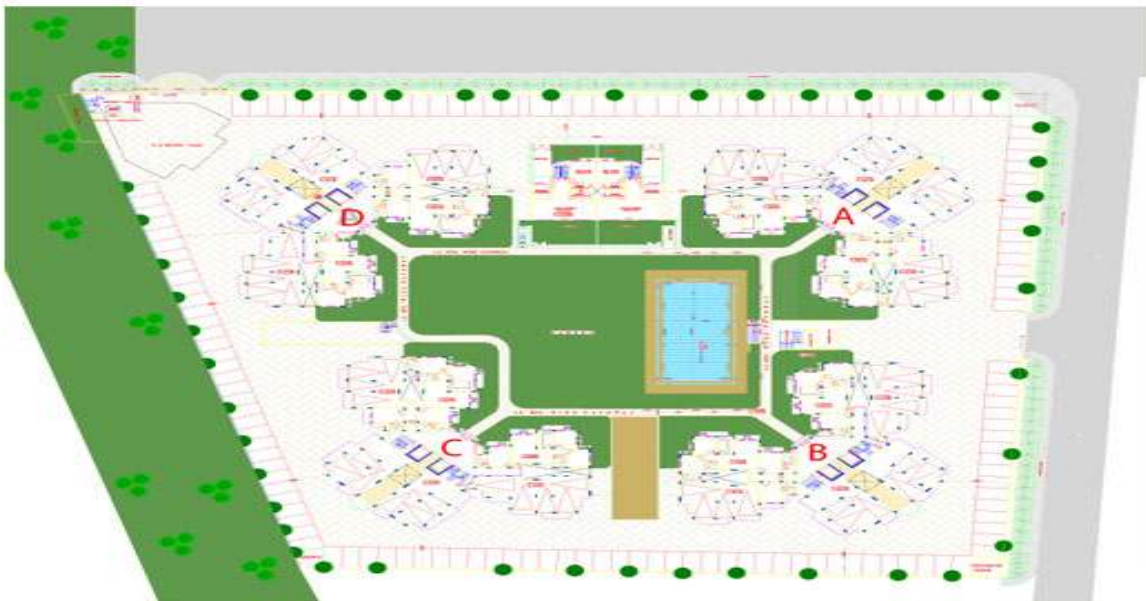




ATS GREENS VILLAGE LOCATION MAP



ATS GREENS VILLAGE SITE MAP





DESCRIPTION AND SPECIFICATIONS OF APARTMENTS

The apartments in the multistoried complex are two bedrooms, three bedrooms and three bedrooms with servant quarter/study. Their brief Specifications are listed below :

- FLOORING** Marble slab flooring in the whole apartment except Kitchen & Bathroom where marble floor tiles of 1' x1' or approximate size to be used. All staircases and common landings to be of marble stone
- DADO** Glazed/Ceramic tiles up to 7'-0" height in toilets and 2'-0" height above kitchen slab in appropriate colour and print.
- EXTERIOR** Permanent Finished.
- PAINTING** Oil bound Distemper paint of appropriate colour on interior walls of the apartment.
- KITCHEN** All Kitchen slabs in Udaipur Green stone with Granite Polish. Points for washing machine and fridge to be provided. Woodwork in kitchen cabinets to be in 3/4" commercial ply board with appropriate finish.
- DOORS & WINDOWS** Flush doors with Spirit Polish/Enamel Paint; with aluminum powder coated hardware fittings and locks of Golden/Secure or equivalent make. Door frames and window panels of Champ/Kail/Sal/Assam Teak wood. Windows to have Aluminum powder coated handles and T-bolts. Size and section as per design of the architect.
- PLUMBING** As per standard practice, all G.I. pipes to be painted with Anti-corrosion paint to use. All C.I. joints to have molten lead hammered to give water tight joints.

- TOILET** *Parryware/Hindustan/Cera or equivalent wash basins and W.C.s (of appropriate shades kingstar). All taps and fittings to be of Chrome Plated Jaquar or equivalent make. Mirrors and appropriate lights will also be provided.*
- ELECTRICALS** *Multi-strand electrical (copper) wiring to be as per I.S.code. Anchor or equivalent switches with equivalent switch plates, circuits to have M.C.B. of approved make, T.V., Telephone points will be provided in drawing, dining and all bedrooms.*
- LIFTS** *Lifts with stainless steel exterior and interior will be provided for access to all floors.*
- GENERATOR** *Generator to be provided for backup of lifts & other Common Areas.*
- WATER TANKS** *Underground water tanks with pump house and tube wells for uninterrupted supply of water.*
- CLUB HOUSE** *Club House with Swimming Pool to be provided.*
- INTERNET** *Broadband connectivity will be available.*

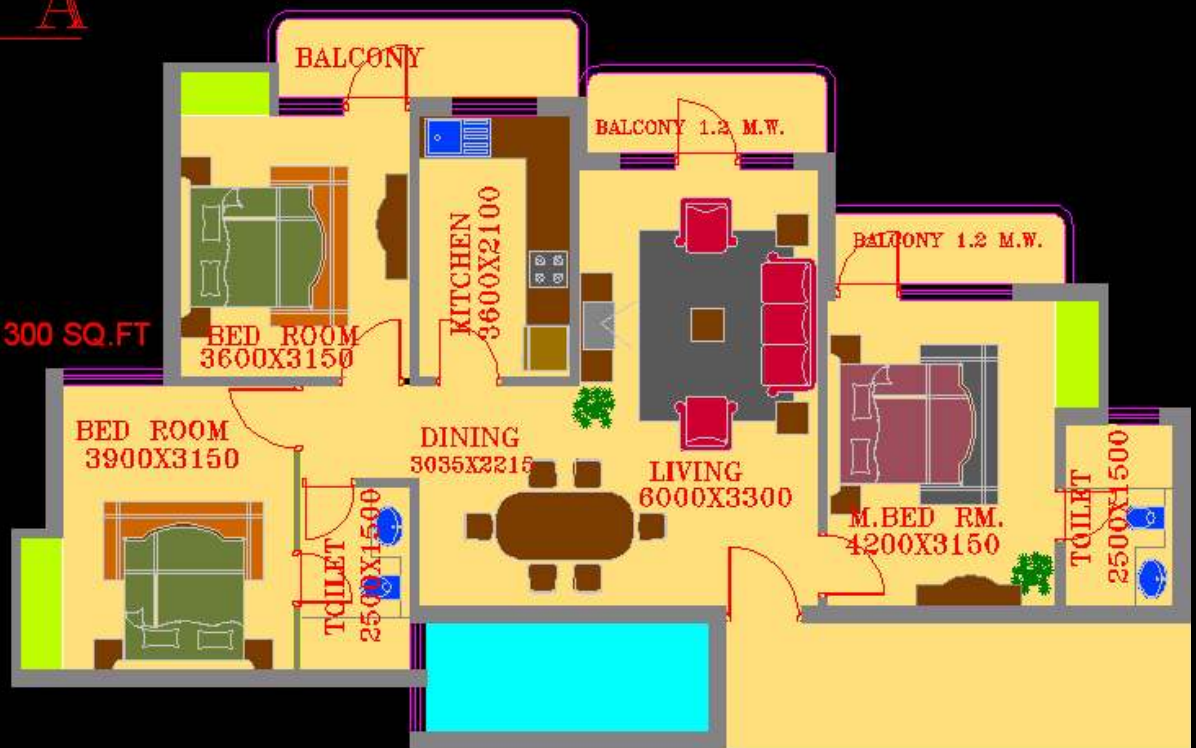


TYPE A UNIT 1300 FT

- 3 Bedrooms
- 2 Toilets
- Living Room
- Dining Room
- Kitchen

TYPE A

- 3- BED ROOM
- 2- TOILETS
- LIVING ROOM
- DINING
- KITCHEN
- SUPER AREA - 1300 SQ.FT





TYPE B UNIT 1500 SQ. FT

- 3 Bedrooms
- 3 Toilets
- Living Room
- Dining Room
- Kitchen

TYPE B

- SUPER AREA - 1500 SQ FT
- 3- BED ROOM
- 3- TOILETS
- LIVING ROOM
- DINING
- KITCHEN



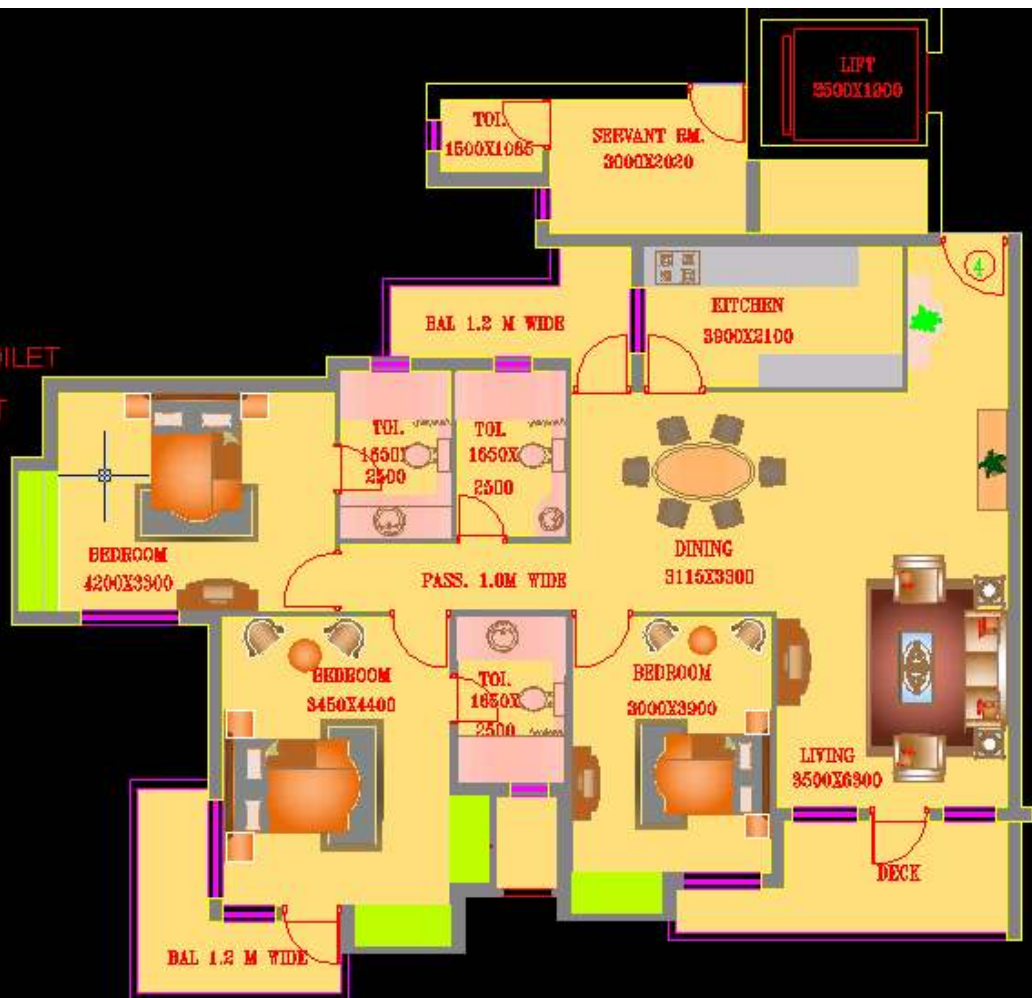


TYPE C UNIT 1750 SQ. FT

- 3 Bedrooms
- 3 Toilets
- Living Room
- Dinning Room
- Kitchen
- Servant Room with Toilet

TYPE C

- 3- BED ROOM
- 3- TOILETS
- LIVING ROOM
- DINING
- KITCHEN
- SERVANT ROOM WITH TOILET
- SUPER AREA - 1750 SQ.FT





TYPE D UNIT 2800 SQ. FT

- 4 Bedrooms
- 4 Toilets
- Living Room
- Dining Room
- Kitchen
- Servant Room with Toilet

