

Landmark Tivoli - Mogappair, Chennai



2, 3 BHK Luxurious township residential project

Landmark Tivoli Chennai is a vertical residential project in the locality of Mogappair, Chennai. Landmark Tivoli Offers 2 BHK & 3 BHK luxurious township of Chennai.

- Project ID : J811905462
- Builder: Landmark
- Properties: Apartments / Flats
- Location: Landmark Tivoli, Mogappair, Chennai (Tamil Nadu)
- Completion Date: Mar, 2013
- Status: Started

Description

Landmark Tivoli is a brand new residential project of Landmark developers, offering **2BHK & 3BHK** luxurious apartments with all facilities and its sizes are ranging from **1100 sq feet to 1764 sq feet**. The project is located at Mogappair, Chennai which is prime location of the city. With bizarre Hi-tech specifications of quality development and architectural well designs, you can be sure of loving the place where you would see your bright future. Tivoli project offers you all sports of luxurious amenities like, 24 hours power backup, Security, club house, Gymnasium, outdoor & Indoor games, intercom, Garden, Kids play area, quality Lifts, etc. The project is just 10 Kms away from Mogappair, and very close to School, Hospital like Madras Medical Mission.

Location: Landmark Tivoli, Mogappair, Chennai

Amenities:

- Lifts
- 24 Hours Security
- Gas Line
- Park
- 24 Hours Power Backup
- Gym
- Recreational Amenities
- Other Amenities – Pest control for the project in four stages, Plush Lobby near stilt floor, overhead tank with partition wall for drinking / Bore well will be provided
- Water Facilities
- Compound Wall
- Additional Room Provided

Specification:

Walls

- External Walls: Weather coat emulsion over primer.
- OBD for ceiling.
- Internal Walls: Putty finish and plastic emulsion over primer.

Woodwork

- Main door: Frame and solid Teakwood shutter with Handle set single cylinder lockset of Yale or equivalent and brass hardware.
- Internal doors: Teak wood frame with flush door shutters with cylindrical locks of Dorset/ Yale/ Godrej or equivalent make and Aluminum hardware.
- Windows: UPVC open able/ Sliding windows with plain glass.

Electricals

- Concealed Copper wiring of Power flex or equivalent make with modular plate switches, centralized cabling system for centralized DTH and
- Telephones.
- Wiring shall be done for lighting, 5Amps, 15 Amps and AC points in the Apartment.
- All switches shall be Anchor Woods/ Le Grand/ MK/ Litaski or equivalent make.

Fittings

- Kitchen: SS sink with drain board of Nirali or equivalent would be provided.
- Toilets: Sanitary fittings of EWC wall-hung of Duravit/ Roca or equivalent make, All Faucets shall be single lever brass CP, Jaguar Florentine /Rocca or equivalent make.

Plumbing

- All water supply lines shall be schedule 40 CPVC pipes, Drainage lines and storm water drain pipes shall be in PVC.

Flooring

- Kitchen counter : Galaxy Black granite counter with dadoo above counter upto 2' 0" ht.
- All Toilets : Design tile concepts upto 7' height.
- Balconies : Rustic Anti Skid tiles with MS railings.
- Staircases: Granite flooring with SS hand Railing as per Architect design.
- Living, Dining ,Bedrooms, Kitchen & Utility : Vitrified tile flooring.

About Builder:

Landmark Builders is one of the leading real estate construction company of South India. They have crafted many residential & commercial projects. **Landmark Tivoli** is one the luxurious residential project which is brand New & they input their best afford to give out their best and deliver the projects on time.

Features

Luxury Features

- Power Back-up ■ Room AC ■ Lifts ■ Water Softner
- High Speed Internet

Security Features

- Security Guards ■ Electronic Security
- Intercom Facility ■ Fire Alarm

Lot Features

- Balcony ■ Park Facing

Interior Features

- Woodwork ■ Modular Kitchen
- Feng Shui / Vaastu Compliant

Exterior Features

- Visitor Parking ■ Basement

Recreation

- Swimming Pool ■ Park ■ Fitness Centre / GYM
- Club / Community Center

Maintenance

- Maintenance Staff ■ Water Supply / Storage
- Boring / Tube-well ■ Rain Water Harvesting
- Waste Disposal

Commercial Features

- Service / Goods Lift

Land Features

- Plot Boundary Wall ■ Society Boundary Wall
- Feng Shui / Vaastu Compliant
- Club / Community Center ■ Adjacent to Main Road
- Water Connection ■ Electric Connection
- Close to Hospital ■ Close to School
- Close to Shopping Center/Mall

Gallery

Pictures



Side View



Swimming Pool



Gymnasium



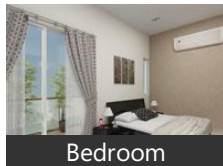
Living Room



Meeting Room



Dinning Room



Bedroom



Meeting Room

Floor Plans



1214 Sq Ft



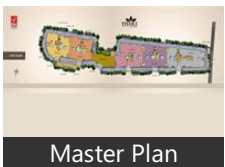
1462 Sq Ft



1519 Sq Ft

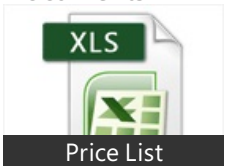


1764 Sq Ft



Master Plan

Documents



Price List

Location

Landmarks

Transportation

Chennai International Airport (<16km), Violet Church Bus Stop (<0.5km), 20 A Bus Stand (<0.5km), Kavimani Street Bus Stop (<0.5km), Mogappair West Terminal (<1km), Mogappair East Bus Terminus (<1km), Bus Stand (<1km), MGR Statue Bus Stop (<1km), Golden Flats Bus Stop (<1km), Taxi stand (<9km), AUTO STAND (<5km), Ambattur OT Auto Rickshaw Stand (... Daniel Taxicab Stand (<6km), Share Auto Stand (<6km), Ekambara Iyer Street Auto Rickshaw ... Prithvipakkam Down Auto Rickshaw...

Markets & Shopping Malls

S.M.Fancy stores (<1km), Yessiyessi Super Market (<1km), Lakshmanan, S M Complex (<2km), Big Bazaar (<7km), Mega Mart (<6km), Devipraskasm Shopping Center (<2k... PGN Shopping Complex (<3km), Arasu Property Management (<0.5km), Lakshmanan, Ampa Skywalk (<7km), Alsa Mall (<13km)

Banks & ATMs

Corporation Bank (<0.5km), Vijaya Bank (<0.5km), HDFC Bank (<0.5km), State Bank of Travancore (<1km), SBI (<1km), ICICI Bank (<0.5km), HDFC Bank ATM (<0.5km), ICICI Bank ATM (<0.5km), Indian Bank (<1km), Karur Vysya Bank (<1km), Indus Ind Bank (<1km), HDFC Bank ATM (<1km)

Hotels & Guest Houses

Mogappair Service Apartments (<1km), Fire Ball (<0.5km), Thirumala Hostels & Guest house (<... Hotel Chennai Deluxe (<4km), Hotel Royal Plaza (<4km), Al Fouz Guest House (<2km), Royal Villas Luxury Serviced Apartme... Hotel Maurya (<6km), Venkateshwara Hotel (<1km), Hotel Chennai Gateway (<4km), The Kanchi Residency Hotel (<4km), Goldmine Hotels (<4km), Amudha Residency (<1km), Hotel Sugantha Bhavan (<3km), Hotel Arun International (<4km)

Restaurants & Clubs

Shanghai Dhaba Garden Restaurant (... Shanghai Dhabha (<1km), Stumps A/C Restaurant (<1km), A2B Restaurant (<1km), Ras Bhojan (<1km), Sanjeevanam (<1km), Arasan Restaurant (<1km), Fire Ball (<0.5km), Quark snooker, Book World Lending Library Mogapp.. Frames Snook in (<2km), Hobby Club (<4km), Geethanjali Innisai Ragangal (<3km), League Club (<6km), VGN Minerva Club House (<3km)

Movie Halls

Rohini Theatre (<3km), Golden Eagle Theatre (<2km), Ampa Skywalk (<7km), AGS Royal (<6km), Murugan Complex (<6km), Fame National Chennai (<6km), Balamurali Theatre (<2km), Radha Theatre (<3km)

Parks

HiSwat (<0.5km), Mangal Eri Park (<1km), Golden Colony Park (<1km), Spartan 5, VGN Avenue Park (<1km), Sriram Nagar Park (<2km), Officer, DABC Mithilam Park (<2km)

Hospitals & Clinics

Sendhil Dental Clinic& Implant Cent... Appledent Multispeciality Dental Clin.. Diabetes Clinic (<0.5km), SURABI, SMC ORTHO & TRAUMA CLINIC (<1.. Dr.Arvind Rajagopalan Orthopedic C... VENKATESWARA PHYSIO CLINIC (<0.. Spandana clinic (<0.5km), Madras Medical Mission (<2km), American Hospital™ (<1km), Frontier Life Line Hospital (<2km), Velammal Hospitals (<1km), Maamalla Siddha clinic (<1km), Nivaren Maternity Clinic (<1km), Raghavi Hospital (<1km)

Offices

Central Excise Office (<1km), Post Office (<1km), HCL Technologies (<1km), Chennai Metro Water Office (<1km), Ambattur Taluk Office (<1km), Kaizen Building Systems (<1km), Metal Craft Chennai (<1km)

Schools & Colleges

Mar Gregorios College (<1km), Velammal School (<0.5km), Velammal Matriculation Higher Seco.. TreeHouse Play Group & Nursery (<0.. Velammal Matric Higher Secondary S.. Little Shishyas (<1km), Sahana Fine Arts (music school), Shamrock School (<1km), Loyola college (<10km), Dr. M. G. R. Educational and Research. Dwaraka Doss Goverdhan Doss Vaish... DAV Boys Senior Secondary School (... Pachaiyappa, Sri Ramachandra Medical College (<... S. A. Engineering College (<10km)

Other features

chennai (<1km)

* All distances are approximate

Properties

Landmark Tivoli News

Expert Reviews on Landmark Tivoli

Explore

[Projects in Chennai](#)

[Brokers in Chennai](#)

More Information

Report a problem with this listing

Is any information on this page outdated or incorrect?

[Report it!](#)

Disclaimer: All information is provided by builders, advertisers, or collected from publicly available sources and may not be verified as per RERA guidelines. Any information provided on this website, including facts and figures, should be verified independently before entering into any transaction. PropertyWala.com is only an advertising platform to help connect buyers and sellers and is not a party to any transaction, nor shall be responsible or liable to resolve any disputes between them.

[PropertyWala.com](#) » [Chennai Real Estate](#) » [Projects in Chennai](#) » [Landmark Tivoli - Mogappair, Chennai](#)