

## Godrej Woodsman Estate - Hebbal, Bangalore



### lush greenery apartments

Woodsman Estate will have seven tower blocks of 16 storeys each, with 8 apartments per floor. The apartments are thoughtfully laid out; each apartment has its own view of lush greenery and maximizes space.

- Project ID : J811910853
- Builder: godrej developers
- Properties: Shops, Apartments / Flats, Independent Houses, Residential Plots / Lands
- Location: Godrej Woodsman Estate, Hebbal, Bangalore - 560024 (Karnataka)
- Completion Date: Sep, 2011
- Status: Started

## Description

### Godrej Properties :

- Established as GPL in 1990
- One of the first real estate companies to have obtained an ISO certification
- Projects in 10 cities across India
- Upcoming development of 82 million square feet
- Prime locations, good value, excellent construction, efficient support
- Collaboration with outstanding associates

**Godrej Woodsman Estate** is being developed along the golden corridor of Hebbal & Devanahalli and is linked to the 6-lane Golden Quadrilateral highway. Excellent road connectivity ensures a smooth drive to the heart of Bangalore. It is approximately 30 minutes from M.G. Road and 40 minutes from the new airport. At the same time, Woodsman Estate nestles in a nook away from the noise and pollution of downtown Bangalore.

**Woodsman Estate** will have seven tower blocks of 16 storeys each, with 8 apartments per floor. The apartments are thoughtfully laid out; each apartment has its own view of lush greenery and maximises space and comfort with features such as bedrooms separated from living rooms for added privacy.

### Indoor Amenities:

- Reticulated gas piping
- Spacious lobby
- Airtel Intercom facility – main gate and lobby
- Airtel Intercom – amongst residents
- TATA sky connectivity
- 4 lifts per tower
- Auto ventilation for basement
- Electric car charging points

### Outdoor Amenities:

- Amphitheatre with stage
- Glass pavilion
- Open lawn
- Party lawn
- Maze garden
- Promenade
- Children's play area
- Old Folk's corner
- Swimming pool
- Multi purpose court
- Tennis court

## Features

### Luxury Features

- Power Back-up ■ RO System ■ Water Softner

### Interior Features

- Feng Shui / Vaastu Compliant

### Recreation

- Swimming Pool ■ Park ■ Fitness Centre / GYM

### Land Features

- Corner Plot ■ Feng Shui / Vaastu Compliant
- Club / Community Center ■ Adjacent to Main Road
- Park/Green Belt Facing ■ Water Connection
- Electric Connection ■ Close to Hospital

### Security Features

- Intercom Facility

### Exterior Features

- Reserved Parking ■ Visitor Parking ■ Basement

### Maintenance

- Maintenance Staff ■ Boring / Tube-well
- Rain Water Harvesting ■ Waste Disposal

### Other features

- Security / Fire Alarm ■ Corner Flat / House / Plot
- Lift(s) ■ Security Personnel ■ Water Storage
- Club house / Community Center
- Society Name: Godrej Woodsman Estate

- Close to School ■ Close to Shopping Center/Mall

- Flooring: Vitrified ■ Furnish: Semifurnished
- Possession: Immediate ■ Ownership: Freehold
- Age of Property: Less than 5 Years
- Total Floors in Complex: 16
- Property on Floor: 8th Floor

## Gallery

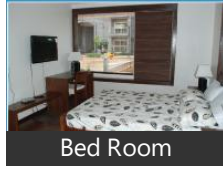
### Pictures



Aerial View



Front View



Bed Room



Club House



Main Entrance



Gymnasium



Playground



Panormic View

## Floor Plans



Location Map

## Location

## Landmarks

### Transportation

Airport (<2km), Way To Yelahanka (<2km), Jakkuru Airport (<4km), Orr And Airport Expressway Intersect... Road To Bangalore Hal Airport (<14k.. Airport Authority Of Indian Airlines (... Airport Authority Of India (<15km), Airport Road (<15km), C V Raman Nagar (Turn Right If You ... Hebbal Railway Station (<3km), Hebbal Railway Station (<3km), Kodigehalli Railway Station (<4km), Lottegollahalli Railway Station (<6km.. L.G. Halli Railway Station (<6km)

### Markets & Shopping Malls

South Indias Largest Mall In Yelahank.. Princess Mall (<9km), Metro Shopping Mall (<9km), Fab Mall (<10km), Hosujas Soundarya Mall ( Geethanjal... Poojas Phone Mall (<10km), Sigma Mall (<11km), Natura Mall (<11km)

### Banks & ATMs

Karnataka Bank (<2km), Corporation Bank Atm (<2km), State Bank Of India (<2km), Corporation Bank (<2km), Canara Bank (<2km), State Bank Of Mysore (<4km), State Bank Of India (<4km), Bank Of India (<5km), Punjab National Bank (<5km), Syndicate Bank (<5km)

### Hotels & Guest Houses

Sushmitha Hotel (<2km), Shiv Shanti Sagar Hotel (<3km), Durga Hotel (<4km), Hotel Prabhu Vihara (<5km), Brhmavar Hotel (<5km), Hotel New Shanthi Sagar (<5km), Guru Darshini (<6km), Hotel (<6km), Raja Military Hotel (<6km), Ms Ramaiah College Of Hotel Manag.. Housing For Guests (<4km), Kavathi Guest House (<4km), Guest House (<5km)

\* All distances are approximate

## Properties

Type	Area	Possession	Price *
2BHK Apartment / Flat	1325 SqFeet	-	₹ 1.35 crore
2BHK Apartment / Flat	1394 SqFeet	-	₹ 1.45 crore
2BHK Apartment / Flat	1396 SqFeet	-	₹ 1.25 crore
2BHK Apartment / Flat	1450 SqFeet	-	₹ 1.12 crore
2BHK Apartment / Flat	1460 SqFeet	-	₹ 1.6 crore
2BHK Apartment / Flat	1485 SqFeet	-	₹ 1.32 crore
3BHK Apartment / Flat	1700 SqFeet	-	₹ 1.6 crore
3BHK Apartment / Flat	1730 SqFeet	-	₹ 1.5 crore
3BHK Apartment / Flat	1740 SqFeet	-	₹ 1.6 crore
3BHK Apartment / Flat	1750 SqFeet	-	₹ 1.55 crore
3BHK Apartment / Flat	1790 SqFeet	-	₹ 1.78 crore
3BHK Apartment / Flat	1900 SqFeet	-	₹ 1.5 crore
3BHK Apartment / Flat	2930 SqFeet	-	₹ 2.2 crores
4BHK Apartment / Flat	3500 SqFeet	-	₹ 3.5 crores
5 Bedroom Independent House	4994 SqFeet	-	₹ 3.87 crores
Residential Plot / Land	2400 SqYards	-	₹ 1.68 crore

\* Data has been collected from publicly available sources and may not be up to date.

## Properties available in 'Godrej Woodsman Estate'

### 3 Bedroom Flat for sale in Godrej Woodsman Estate, Hebbal. 3 crores



3499 SqFeet Apartment @ Rs.8574/SqFeet

ID: P35537123 — Posted: May 15 by [Deepak K](#)

Godrej woodsman estate 3 BHK flat for sale (Godrej Woodsman Estate)

Godrej woodsman estate 3 bhk and 3 bathroom flat for sale. its 3499 sqft north facing flat on higher floor with amazing view towards lake side. its a excellent project with all modern amenities like swimming pool, children's play area, gym, party hall and club house. we have more ... [more details](#)

## Godrej Woodsman Estate News

## Expert Reviews on Godrej Woodsman Estate

Explore

[Projects in Bangalore](#)

[Brokers in Bangalore](#)

More Information

Report a problem with this listing

Is any information on this page outdated or incorrect?

[Report it!](#)

**Disclaimer:** All information is provided by builders, advertisers, or collected from publicly available sources and may not be verified as per RERA guidelines. Any information provided on this website, including facts and figures, should be verified independently before entering into any transaction. PropertyWala.com is only an advertising platform to help connect buyers and sellers and is not a party to any transaction, nor shall be responsible or liable to resolve any disputes between them.