



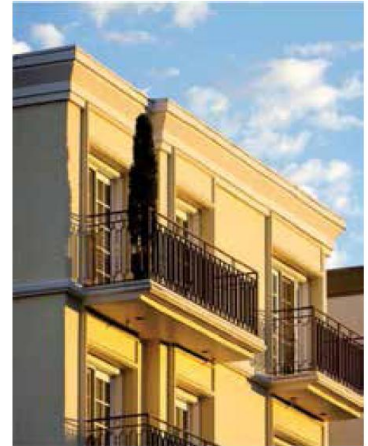
# ASPEN HEIGHTS

## SPECIFICATIONS



### LIVING/DINING/LOBBY

- Flooring: Vitrified Tile of reputed brand.
- Walls: Acrylic emulsion of reputed brand.
- Door Frame: Folded Steel Section / Wood.
- Doors: 35mm thick Flush/Skin door with night latch, magic eye and premium handle.
- Windows: uPVC / Wood / Anodized aluminium with Float glass.
- Fixtures/fitings: Modular switches/sockets/fan regulator of reputed brand.



### BEDROOM

- Flooring: Vitrified tile/laminated wood of reputed brand.
- Walls: Acrylic emulsion of reputed brand.
- Door Frame: Folded Steel Section / Wood.
- Doors: 35mm thick Flush/Skin door with premium handle.
- Windows: uPVC / Wood / Anodized aluminium with Float glass.
- Fixtures/fitings: Modular switches/sockets/fan regulator of reputed brand.

### BALCONY

- Flooring: Anti Skid Ceramic/Vitrified tile of reputed brand.
- Walls: High quality acrylic exterior finish of reputed brand.
- Door Frame/Doors and Windows: Sliding Door/window of uPVC/ Wood /Anodized aluminium with Float glass.
- Fixtures/fitings: Masonry/mild steel railing with high quality acrylic emulsion/enamel paint of reputed brand.



### KITCHEN

- Flooring: Vitrified tile of reputed brand.
- Walls: 2' Ceramic tile over platform and Acrylic emulsion of reputed brand.
- Windows: uPVC / Wood / Anodized aluminium with Float glass.
- Fixtures/fitings: Modular switches / sockets / regulator of reputed brand, L-shape platform with Granite top, Stainless steel single bowl Sink and provision for hot and cold water.

### OTHER SPECIFICATIONS

- Fire resistant PVC insulated Copper electrical wires in concealed conduits.
- Piped Gas supply provision in kitchen.
- Passenger and Service/Stretcher lift in each tower with Automatic Rescue Device (ARD) and power back-up.
- Earthquake resistant RCC frame structure.
- Fire fighting system.
- Adequate light points and electrical sockets in the apartment for modern living needs like chimney, water purifier, dishwasher, refrigerator, microwave oven, exhausts, washing machine, air-conditioners, room heaters, water geysers, television and set-top box etc.
- TV points in bedrooms and drawing/dining room.
- Space for window/split air-conditioners in all bedrooms and drawing/dining room.
- Intercom facility (by authorized landline phone service provider).



### BATHROOM

- Flooring: Anti Skid Ceramic tile of reputed brand.
- Walls: Ceramic tiles, till upto 7 Ft. Height of reputed brand.
- Door Frame: Folded Steel Section/Wood.
- Doors: 35mm thick Flush/Skin door with premium handle.
- Windows: uPVC / Wood / Anodized aluminium with Float glass.
- Fixtures/fitings: Branded CP fittings and Chinaware.



- A Township of 32 Acres
- 2/3/4 BHK Apartments and Penthouses
- Prime Location on Main Bhiwadi-Alwar Highway
- Located before Toll Plaza on Highway
- More than 80% of open and green areas
- Approximate 5 acres of Central Greens
- Sports Ground
- Maximum outdoor sports activities
- Dedicated Shopping Complex
- Community halls for social events and gatherings
- Beautifully landscaped parks in each project
- Extra wide internal road network leading to individual towers
- Approx. 2 kms track
- Soft areas (sand filled) for kids
- Clubhouses with all the modern amenities and facilities in each project
- 24x7 hour water supply
- Power Back-up
- Multi-level Security & CCTV
- Intercom connection between flat and Security Office
- Piped Gas Supply
- Rain Water Harvesting
- Vaastu Compliant

