



Artistic Impression

ASPEN HEIGHTS

APARTMENT LIVING. REDEFINED.

IN

TOWNONE™

32 ACRES OF HAPPINESS. SECTOR 27, BHIWADI.



Real Asset Buildtech Pvt. Ltd.
Creating Assets for you

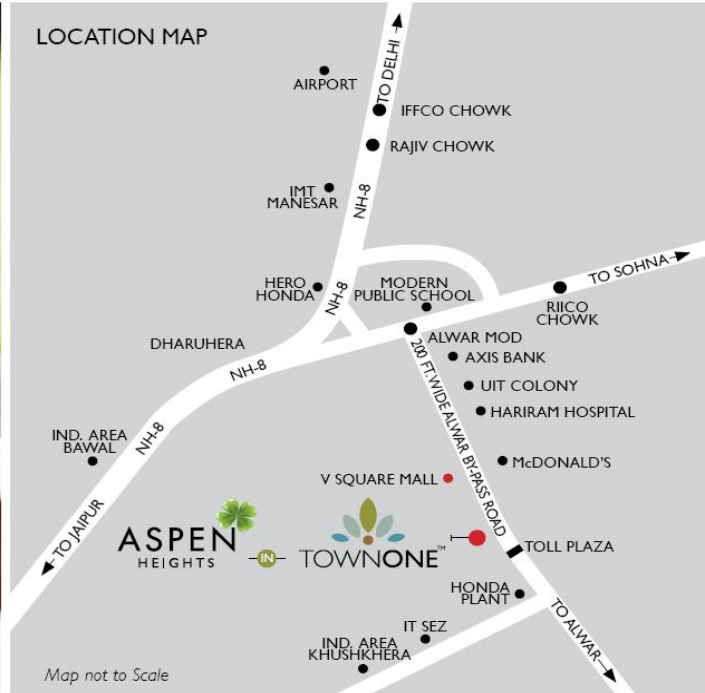
91 - 7838520200



ASPEN HEIGHTS

Welcome to Aspen Heights

Aspen Heights is an approx. 8 acre residential project within the 32 acre TownOne. Aspen Heights is an upscale project that comprises more than 80% open and green landscaped areas with podium living (A revolutionary concept for apartment living). While nature's lush green carpet is a visual treat, the project also pays attention to wellness and other conveniences and a wealth of features that make Aspen Heights an oasis in a hub of comfort.



- Located on the 200 ft. Bhiwadi Alwar Highway (SH-25)
- Dedicated Service Lane
- Located Before Toll Plaza
- Close to Banks, Schools, Hospitals and Shopping
- Connectivity:
 - 2 Km. from Dharuhera
 - 20 Km. from Manesar
 - 35 Km. from Gurgaon
 - 55 Km. from Airport
- Premium Residential Neighbourhood
- Located near V Square Mall
- Multiplex, Hypermarket, Entertainment, Food and Shopping in close proximity
- Brands like Haldiram's, McDonald's, Domino's, SRS Cinemas and others are in close vicinity



TOWNONE™
32 ACRES OF HAPPINESS

- | | |
|------------------------|----------------------|
| 1. Entrance Gate | 10. Cricket Pitch |
| 2. Commercial Complex | 11. Tennis Court |
| 3. Landscaped Podium | 12. Basketball Court |
| 4. Open Parking | 13. Volleyball Court |
| 5. Residents Club | 14. Badminton Court |
| 6. Central Avenue | 15. Jogging Track |
| 7. Central Greens | 16. Skating Rink |
| 8. Sports Field | 17. Sand Pit |
| 9. Golf Putting Greens | 18. Yoga Alcove |

**ASPEN
HEIGHTS**





ASPEN HEIGHTS

2 BHK – Type 1A

Super Built-up Area : 1,025 Sq. Ft.

Built-up Area : 797 Sq. Ft.

2 Bedroom, 2 Bathroom, Drawing/Dining



2 BHK – Type 1B

Super Built-up Area : 1,025 Sq. Ft.

Built-up Area : 797 Sq. Ft.

2 Bedroom, 2 Bathroom, Drawing/Dining





ASPEN HEIGHTS

2 BHK – Type 3A

Super Built-up Area : 900 Sq. Ft.

Built-up Area : 682 Sq. Ft.

2 Bedroom, 2 Bathroom, Drawing/Dining



2 BHK – Type 3B

Super Built-up Area : 900 Sq. Ft.

Built-up Area : 682 Sq. Ft.

2 Bedroom, 2 Bathroom, Drawing/Dining



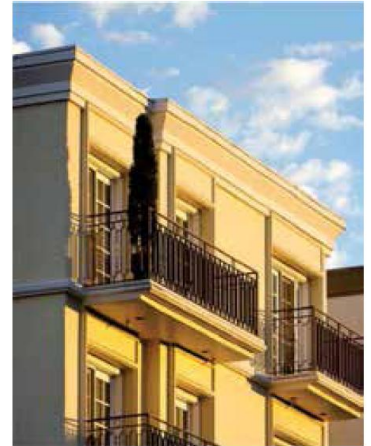
ASPEN HEIGHTS

SPECIFICATIONS



LIVING/DINING/LOBBY

- Flooring: Vitrified Tile of reputed brand.
- Walls: Acrylic emulsion of reputed brand.
- Door Frame: Folded Steel Section / Wood.
- Doors: 35mm thick Flush/Skin door with night latch, magic eye and premium handle.
- Windows: uPVC / Wood / Anodized aluminium with Float glass.
- Fixtures/fitings: Modular switches/sockets/fan regulator of reputed brand.



BALCONY

- Flooring: Anti Skid Ceramic/Vitrified tile of reputed brand.
- Walls: High quality acrylic exterior finish of reputed brand.
- Door Frame/Doors and Windows: Sliding Door/window of uPVC/ Wood /Anodized aluminium with Float glass.
- Fixtures/fitings: Masonry/mild steel railing with high quality acrylic emulsion/enamel paint of reputed brand.

OTHER SPECIFICATIONS

- Fire resistant PVC insulated Copper electrical wires in concealed conduits.
- Piped Gas supply provision in kitchen.
- Passenger and Service/Stretcher lift in each tower with Automatic Rescue Device (ARD) and power back-up.
- Earthquake resistant RCC frame structure.
- Fire fighting system.
- Adequate light points and electrical sockets in the apartment for modern living needs like chimney, water purifier, dishwasher, refrigerator, microwave oven, exhausts, washing machine, air-conditioners, room heaters, water geysers, television and set-top box etc.
- TV points in bedrooms and drawing/dining room.
- Space for window/split air-conditioners in all bedrooms and drawing/dining room.
- Intercom facility (by authorized landline phone service provider).



BEDROOM

- Flooring: Vitrified tile/laminated wood of reputed brand.
- Walls: Acrylic emulsion of reputed brand.
- Door Frame: Folded Steel Section / Wood.
- Doors: 35mm thick Flush/Skin door with premium handle.
- Windows: uPVC / Wood / Anodized aluminium with Float glass.
- Fixtures/fitings: Modular switches/sockets/fan regulator of reputed brand.



KITCHEN

- Flooring: Vitrified tile of reputed brand.
- Walls: 2' Ceramic tile over platform and Acrylic emulsion of reputed brand.
- Windows: uPVC / Wood / Anodized aluminium with Float glass.
- Fixtures/fitings: Modular switches / sockets / regulator of reputed brand, L-shape platform with Granite top, Stainless steel single bowl Sink and provision for hot and cold water.



BATHROOM

- Flooring: Anti Skid Ceramic tile of reputed brand.
- Walls: Ceramic tiles, till upto 7 Ft. Height of reputed brand.
- Door Frame: Folded Steel Section/Wood.
- Doors: 35mm thick Flush/Skin door with premium handle.
- Windows: uPVC / Wood / Anodized aluminium with Float glass.
- Fixtures/fitings: Branded CP fittings and Chinaware.



- A Township of 32 Acres
- 2/3/4 BHK Apartments and Penthouses
- Prime Location on Main Bhiwadi-Alwar Highway
- Located before Toll Plaza on Highway
- More than 80% of open and green areas
- Approximate 5 acres of Central Greens
- Sports Ground
- Maximum outdoor sports activities
- Dedicated Shopping Complex
- Community halls for social events and gatherings
- Beautifully landscaped parks in each project
- Extra wide internal road network leading to individual towers
- Approx. 2 kms track
- Soft areas (sand filled) for kids
- Clubhouses with all the modern amenities and facilities in each project
- 24x7 hour water supply
- Power Back-up
- Multi-level Security & CCTV
- Intercom connection between flat and Security Office
- Piped Gas Supply
- Rain Water Harvesting
- Vaastu Compliant





Real Asset Buildtech Pvt. Ltd.

Creating Assets for you

OFF:307,309 Pankaj Plaza,Plot

No.4,Sec-4 Dwarka

New Delhi-110075,Above UCO Bank,

Near Ashirwad Chowk

Contact us:-+91-7838520200, +91-

9015177177

Web: realassetbuildtech.com

Email: realassetbuildtech@gmail.com,

info@realassetbuildtech.com



VVA

THANK YOU FOR YOUR TIME AND CONSIDERATION