

**100ABOVE**

THE ULTIMATE LIVING POINT BY



**NEPTUNE**

Yours. In every sense.

# Project Overview

Neptune 100 Above is a landmark architectural contribution to Mumbai's skyline, which completes Mumbai's original and prominent Living Point residential complex in Bhandup, Mumbai. Starting at a lofty 100 feet above sea level, five towers rise into the sky above Mumbai's Eastern Suburbs. Neptune 100 Above have 50-storey towers are set in two wings, with two towers in the East Wing and three in the West Wing, and all offer 2, 2.5 and 3 BHK flats. The apartments start at Level 11, 150 feet into the sky. So even lower apartments at 100 ABOVE are higher than upper levels at a shoreline property.





# About Neptune Group



At Neptune, we do more than create buildings. Where others build houses, we create homes. Others construct offices, we create workplaces. We understand that spaces and places, for all their elegance and beauty, are nothing without the people that live and work there. This is why we want to do more. We want to build relationships and construct communities and this can only happen if we truly understand those who use the developments.



# Location



❑ Neptune 100 Above is located at **Bhandup, Mumbai.**

- 10 km from the International airport
- 2.5 km from the Eastern Express Highway
- 2 km from Powai



# Location Map



# Layout Plan



# Floor Plan

**FLAT LAYOUT**  
**2 BHK**



Carpet Area: 702 sq. ft.

### FLAT LAYOUT 2.5 BHK





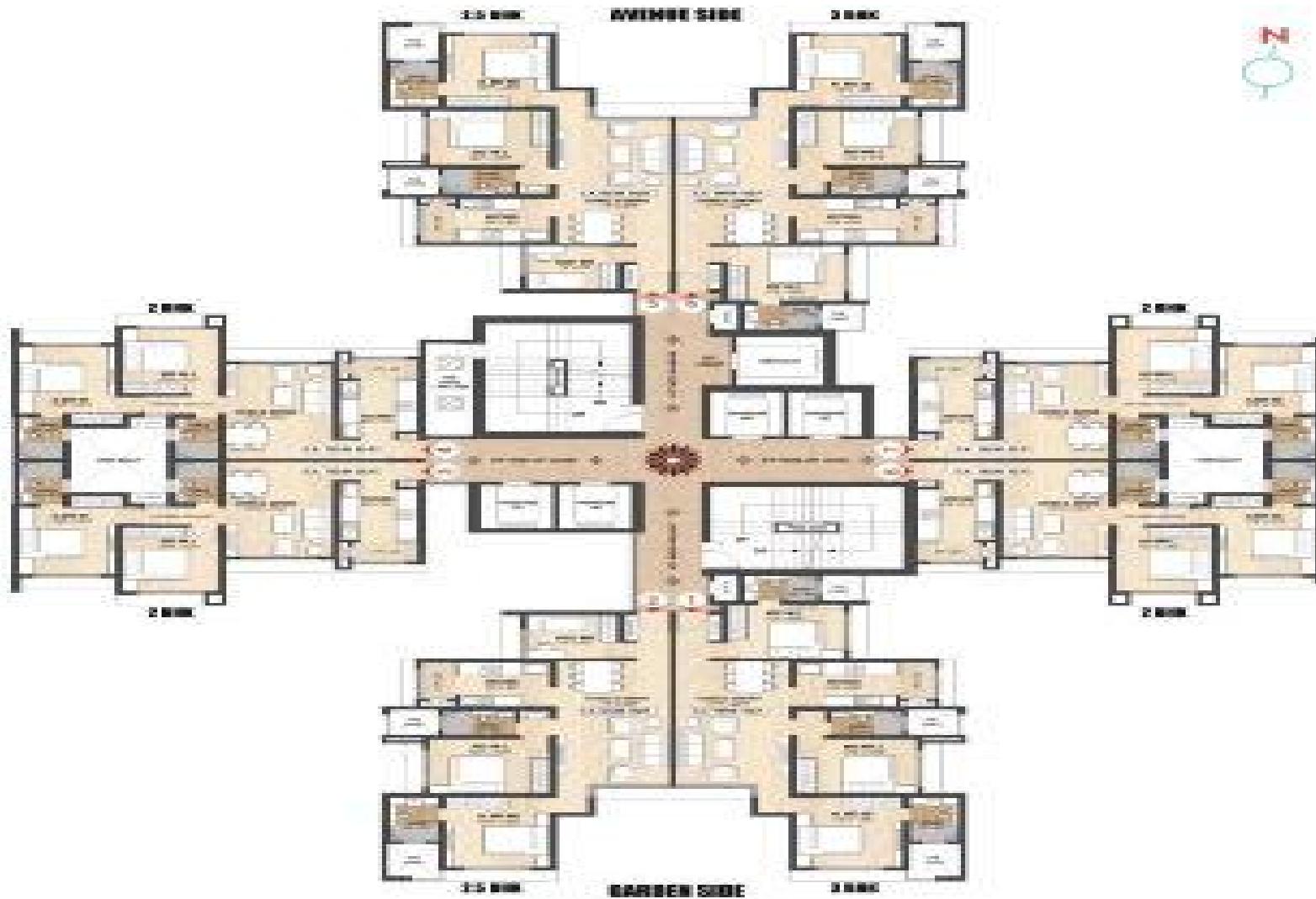
# FLAT LAYOUT 3 BHK



Carpet Area: 959 sq. ft.

# PLANS EAST WING 1

Flat no.	Type	Carpet Area
1, 6	3 BHK	939 sq. ft.
2, 5	2.5 BHK	868 sq. ft.
3, 4, 7, 8	2 BHK	702 sq. ft.

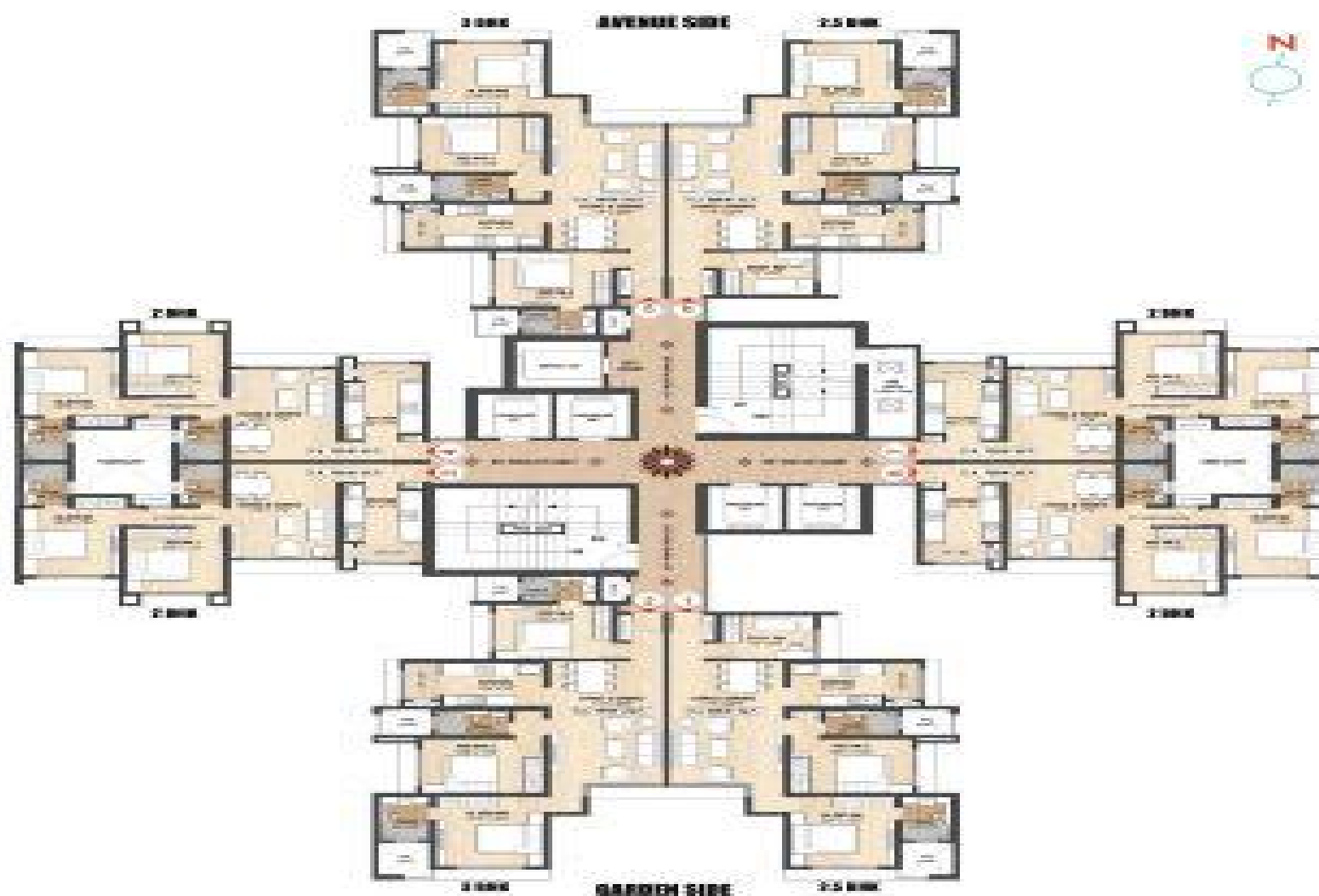


**TYPICAL FLOOR PLAN**  
2nd-7th, 9th-14th, 16th-21st & 23rd-28th Floor

# PLANS

## EAST WING 2

Flat no.	Type	Carpet Area
2, 3	3 BHK	939 sq.ft
1, 6	2.5 BHK	868 sq.ft
3, 4, 7, 8	2 BHK	702 sq.ft

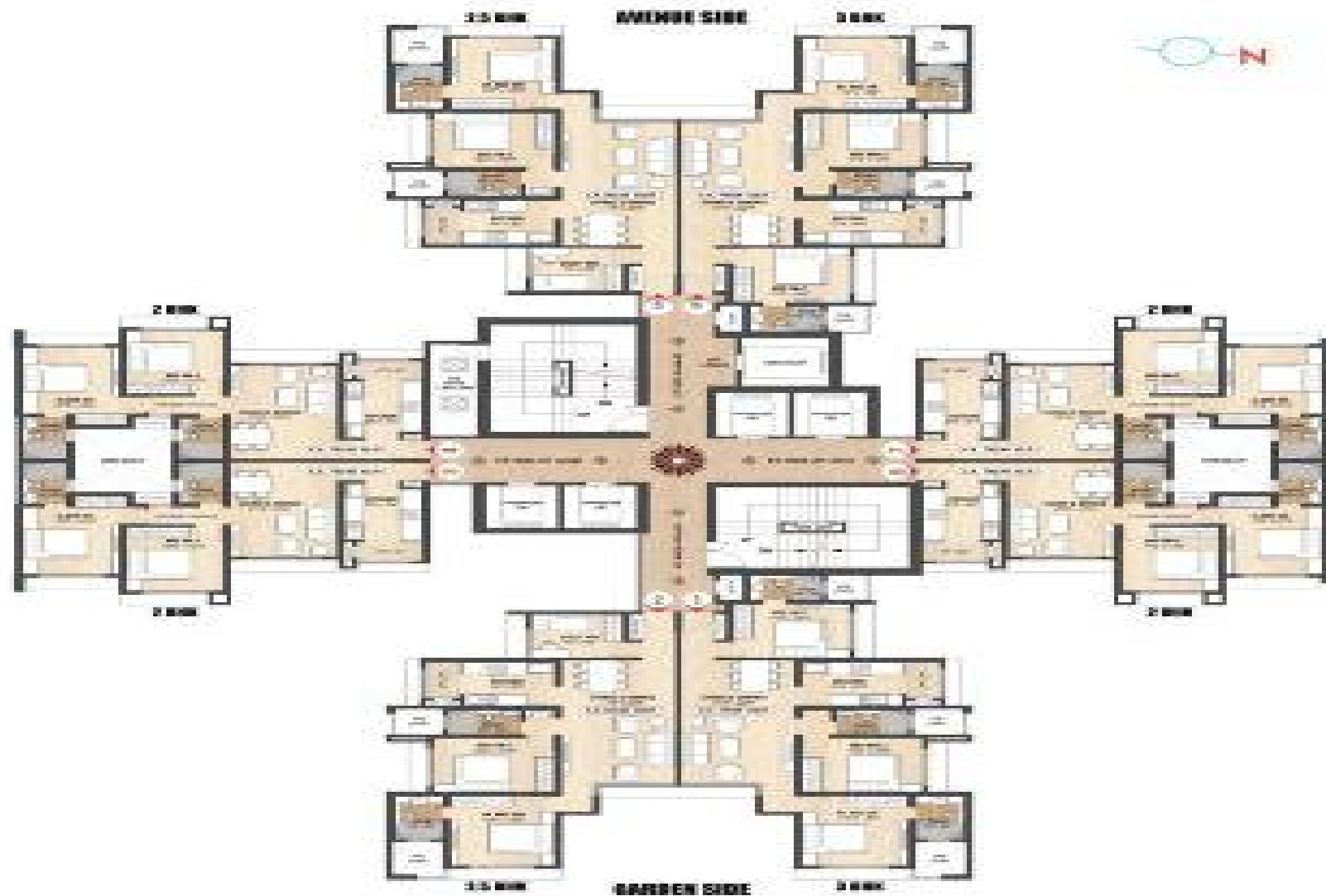


**TYPICAL FLOOR PLAN**  
2nd-7th, 9th-14th, 16th-21st & 23rd-28th Floor



# WEST WING 1

Flat no.	Type	Carpet Area
1, 6	3 BHK	939 sq ft
2, 5	2.5 BHK	868 sq ft
3, 4, 7, 8	2 BHK	702 sq ft

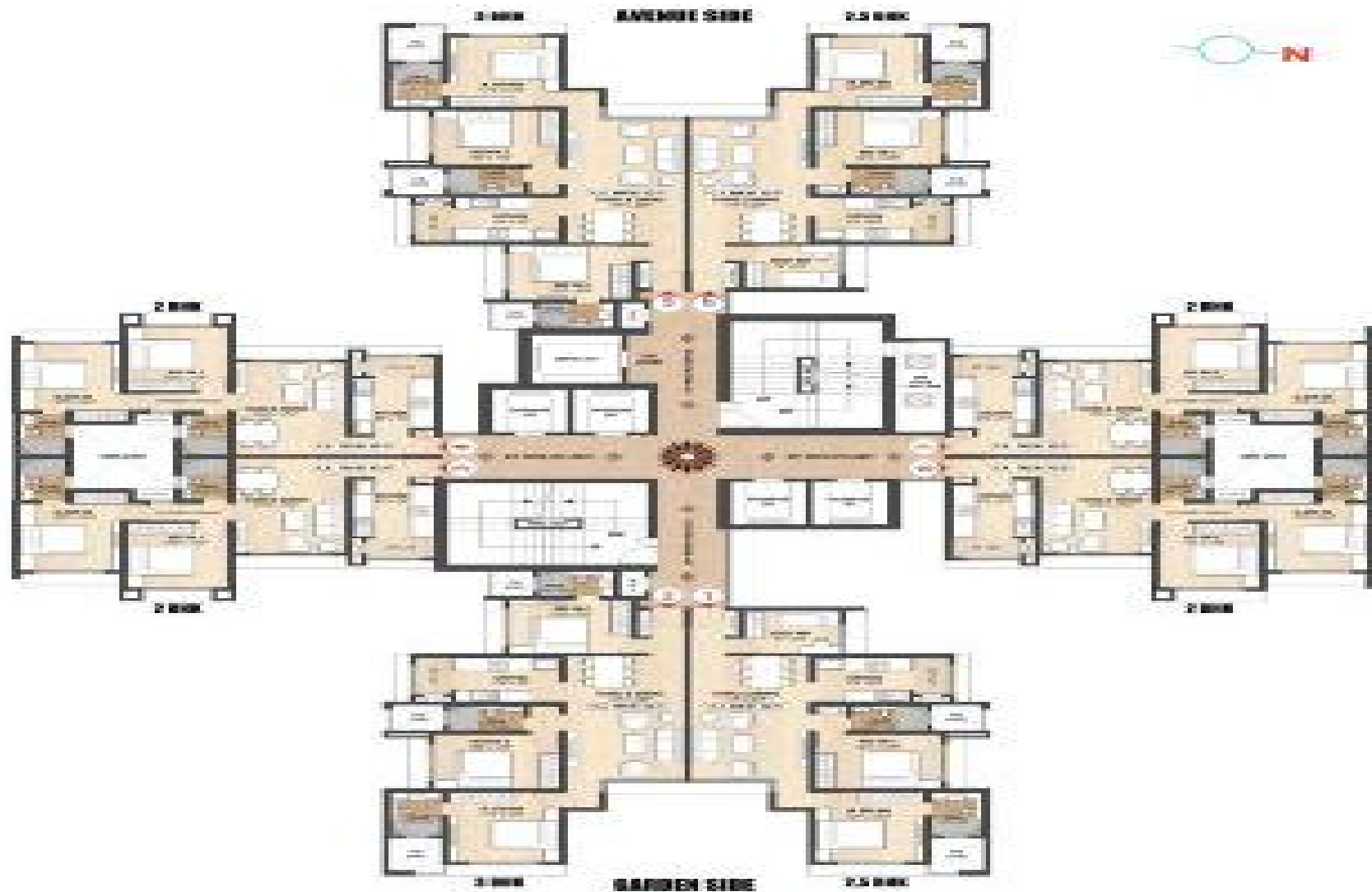


## TYPICAL FLOOR PLAN

2nd-7th, 9th-14th, 16th-21st & 23rd-28th Floor

# WEST WING 2

Flat no.	Type	Carpet Area
2, 5	3-BHK	959 sq ft
1, 6	2.5 BHK	866 sq ft
3, 4, 7, 8	2-BHK	702 sq ft



**TYPICAL FLOOR PLAN**  
2nd-7th, 9th-14th, 16th-21st & 23rd-28th Floor

# Amenities

- Club House
- Jogging trail
- Service Elevator
- High-speed elevators
- State-of-the-art gym
- Luxurious onsite spa
- Double-height entrance
- Ample covered parking spaces
- Beautifully landscaped grounds.





# Specification

- Access controlled by videophone
- 10'6" floor-to-floor heights
- Air-conditioning throughout
- UPVC French windows
- Flowerbed area in all apartments
- Full body vitrified tile flooring
- Granite worktops with stainless steel sink
- Designer bathroom with ceramic tiles
- Finest quality CP fittings and sanitaryware
- Concealed copper wiring with elegant modular switches



**100 ABOVE**





THANK  
YOU

# **AFFINITY SOLUTIONS PVT LTD**

**(The Real Estate Consultant)**

INDIA: *09999684166, 09999684955*

001-6469150050 (US) | 0044-2030516831 (UK)

Visit Us: [www.affinityconsultant.com](http://www.affinityconsultant.com)

Mail Us: [info@affinityconsultant.com](mailto:info@affinityconsultant.com)