

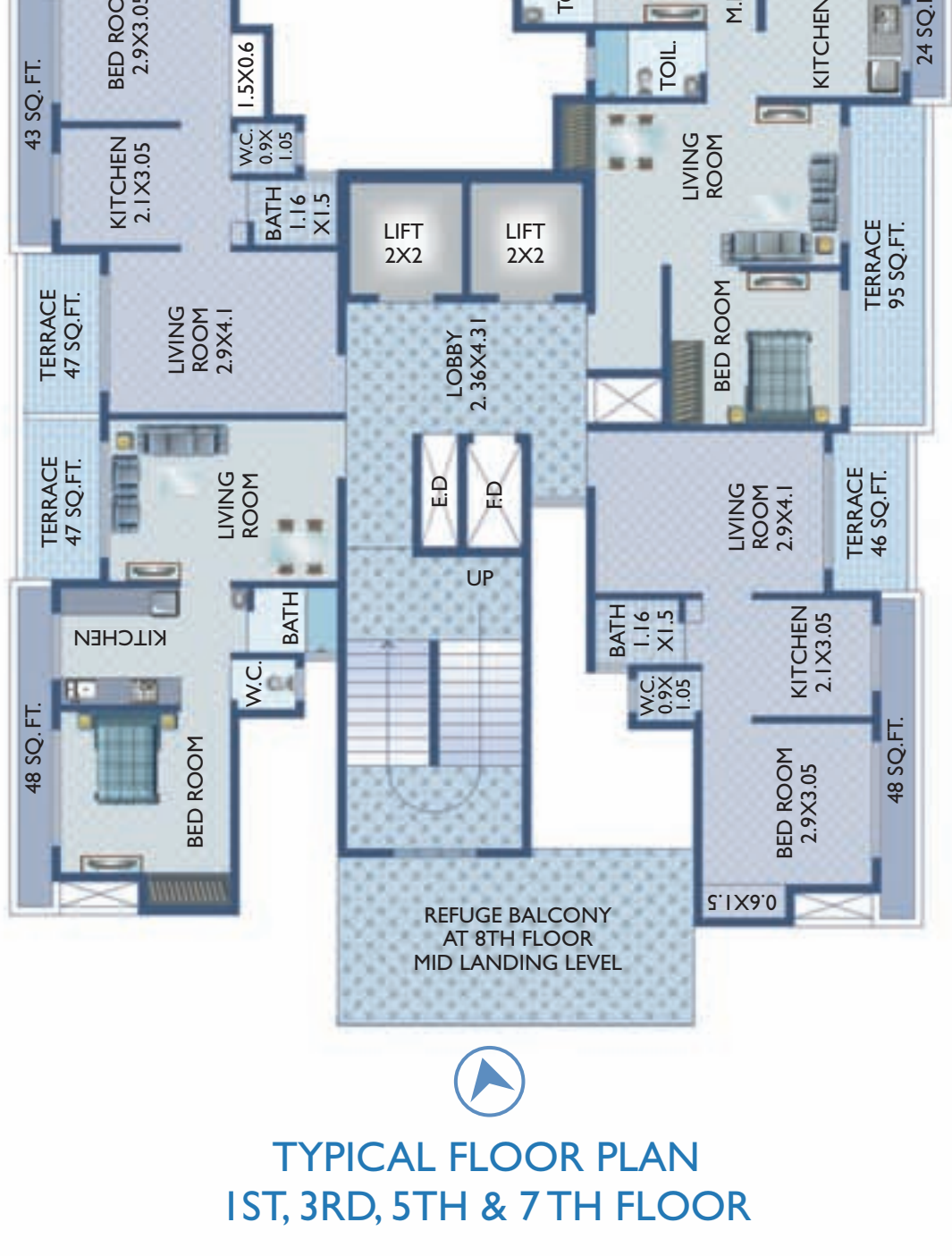


A HOME WHERE YOU WAKE UP TO THE TUNE OF NATURE..... EVERYDAY.



**TRICITY Grand**  
*Homes Inspired by Nature*

PLOT NOS. 33, 33A, 34, 42 & 43, SECTOR-30, KHARGHAR  
9 STOREY TOWER LUXURIOUS 1 BHK & 2 BHK FLATS



TYPICAL FLOOR PLAN  
1ST, 3RD, 5TH & 7TH FLOOR

**TRICITY Grand**  
*Homes Inspired by Nature*

A HOME WHERE YOU WAKE UP TO THE NEXT BEST PLACE TO HEAVEN

TRICITY GRAND. Welcome to a home where you wake up to bright green mornings, right outside your bedroom window for your eyes to soak in. You breathe in air so fresh, so pure, it tingles. Neither high rises, nor pollution.

This beautiful venture comprises of a unique high-rise Slit + 9 storeyed tower representing the highest standards & showcase of immortal royal signatures. The sheer luxury of 1 & 2 BHK flats with a view that captures the breathtaking serenity of Kharghar's hills and the sweet smelling aroma of its flowers.

TRICITY GRAND is ideally located too. Kharghar, Navi Mumbai away from the hustle and bustle of the city, in the pristine green surrounding and with a panoramic view from every side. At TRICITY GRAND, we have left no stone unturned in providing you the ultimate living comfort through the opulence of facade that goes beyond conventional norms of luxury.

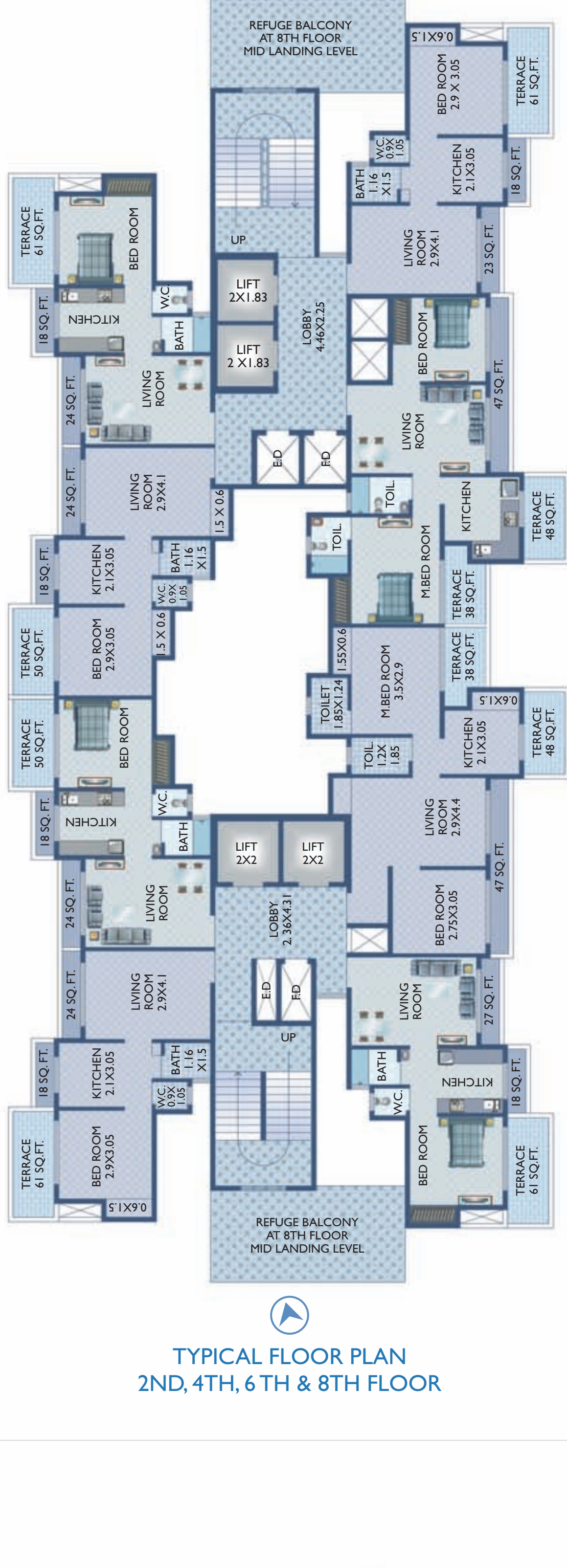
So come and discover this glorious venture which is not only close to nature but also close to many hearts.

*"Beauty gets the attention  
TRICITY GRAND gets the heart"*

A HOME WHERE YOU WAKE UP TO MESMERIZING INTERIORS

From now on, living at home will feel more like being in a resort. The statement explains everything, we however still prefer to elaborate.

- |                |   |
|----------------|---|
| RCC            | - Earthquake resistant RCC structure  |
| Plumbing       | - Concealed plumbing with Jaguar ( Continental ) or similar Fittings            |
| Flooring       | - (first quality) Vitrified tiles in complete apartment<br>Marborite or similar |
| External Lobby | - Full Acrylic paint  |
| Kitchen        | - Decorative entrance lobby   |
| Dado           | - Granite moulded counter with Nirali sink & Exhaust Fan                        |
| Staircase      | - Full height tiles above counter   |
| Toilets        | - Full marble moulded staircase till Top Floor                                  |
| Lifts          | - Coloured Sanitary ware with Johnson or similar tiles up to 7 feet             |
| Doors          | - Exhaust fan in toilets and geyser in bathroom.                                |
| Vastu          | - Global lift or similar  |
| Wall           | - Panelled Durian Doors   |
| Electrical     | - Vastu complaint East-West facing apartments                                   |
| Switches       | - Complete apartment POP finish with Plastic Paint                              |
| Windows        | - Concealed copper Wiring and Circuit Breaker                                   |
| Cills          | - Red Card or similar modular switches  |
| Steel          | - Powder coated Heavy aluminum sliding with coffee coloured tinted glass        |
| Cement         | - Moulded granite cills   |
|                | - TMT 415 grade or higher   |
|                | - All branded cement (Vasavadatta, Birla Shakti, etc.)                          |
|                | - OPC grade 43 or above   |



TYPICAL FLOOR PLAN  
2ND, 4TH, 6TH & 8TH FLOOR

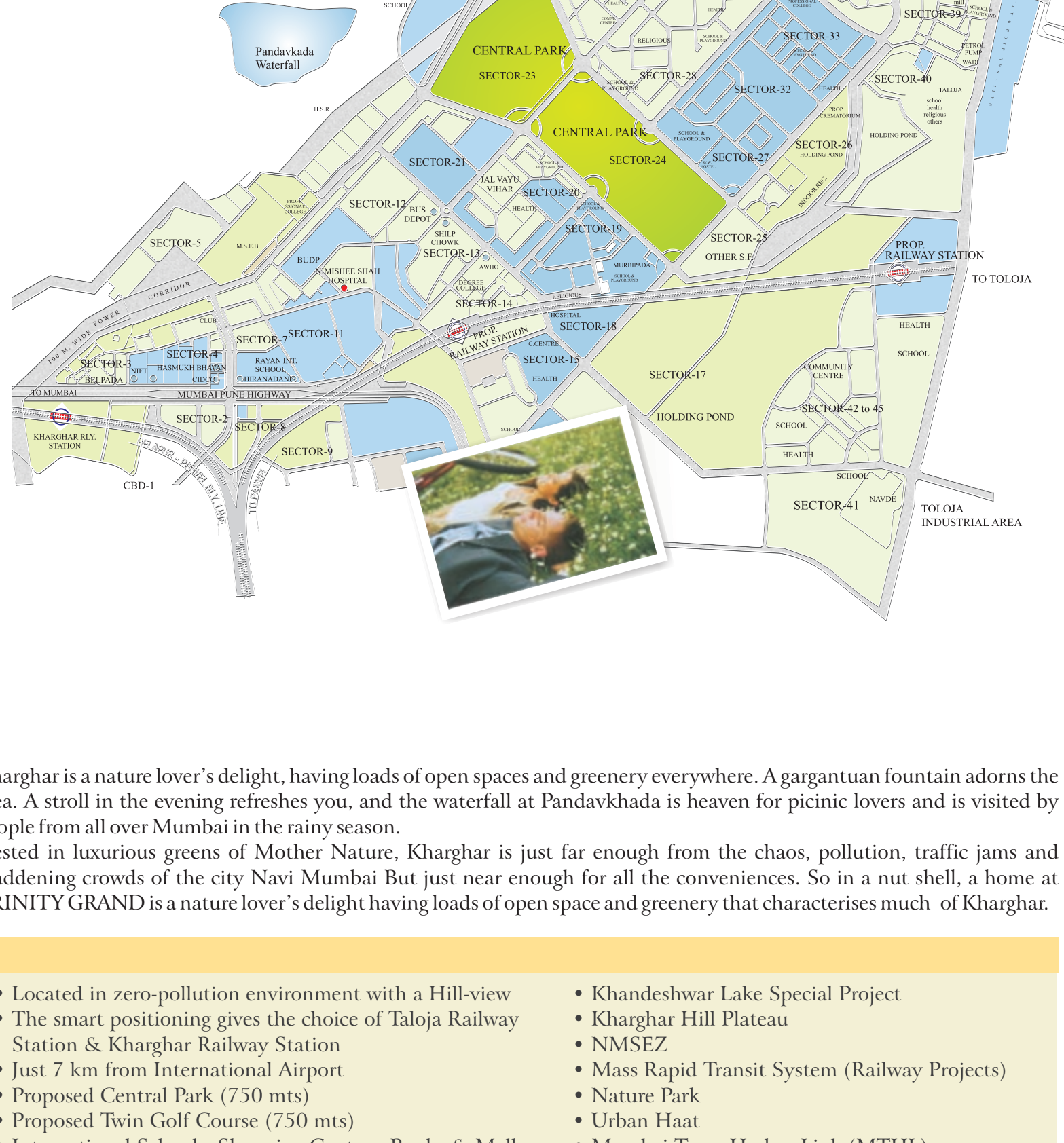
**TRICITY Grand**  
*Homes Inspired by Nature*

PLOT NOS. 33, 33A, 34, 42 & 43, SECTOR-30, KHARGHAR



**TRICITY Grand**  
*Homes Inspired by Nature*

PLOT NOS. 33, 33A, 34, 42 & 43, SECTOR-30, KHARGHAR



Kharghar is a nature lover's delight, having loads of open spaces and greenery everywhere. A gargantuan fountain adorns the area. A stroll in the evening refreshes you, and the waterfall at Pandavkhada is heaven for picnic lovers and is visited by people from all over Mumbai in the rainy season.

Nestled in luxurious greens of Mother Nature, Kharghar is just far enough from the chaos, pollution, traffic jams and maddening crowds of the city Navi Mumbai But just near enough for all the conveniences. So in a nut shell, a home at TRINITY GRAND is a nature lover's delight having loads of open space and greenery that characterises much of Kharghar.

- |  |  |
|--|--|
| <ul style="list-style-type: none"> <li>• Located in zero-pollution environment with a Hill-view</li> <li>• The smart investment gives the choice of Talaja Railway Station &amp; Kharghar Railway Station</li> <li>• Just 7 km from International Airport</li> <li>• Proposed Central Park (750 mts)</li> <li>• Proposed Twin Golf Course (750 mts)</li> <li>• International Schools, Shopping Centres, Banks &amp; Malls</li> </ul> | <ul style="list-style-type: none"> <li>• Khandeshwar Lake Special Project</li> <li>• Kharghar Hill Plateau</li> <li>• NMSEZ</li> <li>• Mass Rapid Transit System (Railway Projects)</li> <li>• Nature Park</li> <li>• Urban Haat</li> <li>• Mumbai Trans Harbor Link (MTHL)</li> </ul> |
|--|--|

