

A decorative floral pattern in shades of blue and white, featuring intricate scrollwork and leaf designs, set against a background of a blue sky with soft, wispy clouds.

Time to enjoy  
an elevated life

**LANDMARK**  
THINK · CREATE · LEAD



## Redefining **class**. Redefining **excellence**.

Landmark presents a condominium of four exclusive projects that emanate class, style, opulence and great functionality. One of the fastest growing groups in reality, Landmark focuses on delivering the finest in quality within stipulated time periods. This ISO 9001 company has consistently set benchmarks in property development through its residential, retail, commercial & hospitality landmarks.

You live only once. And so you should make the most of every moment. However, a demanding metropolis like Delhi gives you little time to do so. Close to this metropolis is a place that gives you everything you can dream of. An array of ready-to-move-in complexes that offer you some openness, freshness, serenity and a lifestyle that makes you feel different from the others.

Step into a pristine backdrop that takes you away from the maddening rush of the city. A lifestyle that promises energy, vivacity and ensures that you live a happy life. At a place that is very close to the capital city of India.

**Golden Villas**  
where home assumes its true meaning

**Golden heights**

platinum **villas**

**PLATINUM HEIGHTS**

Ready-to-move-in Villas & Apartments | Complex full of lush greenery

Well appointed spaces | Landscaping, water bodies | Shopping centre, club, gym, sports etc.

Part of an 85 acre township | 75% open space

Experience a new **grandeur**



*Actual sample apartment pictures.*

The magnificent Golden Villas are an amalgamation of novel architecture, pleasing aesthetics and impressive designs which are ideal for independent living. The designer façade, front-gardens, beautiful interiors, spacious drawing and bathrooms are all designed to deliver an international lifestyle and class that underline your refined tastes.

Every abode has been designed to give you that farm-house feeling. For this, sufficient space has been given for the front yard and kitchen garden in every unit. In all, the villas are planned in a way that brings pride and honour to its owner.

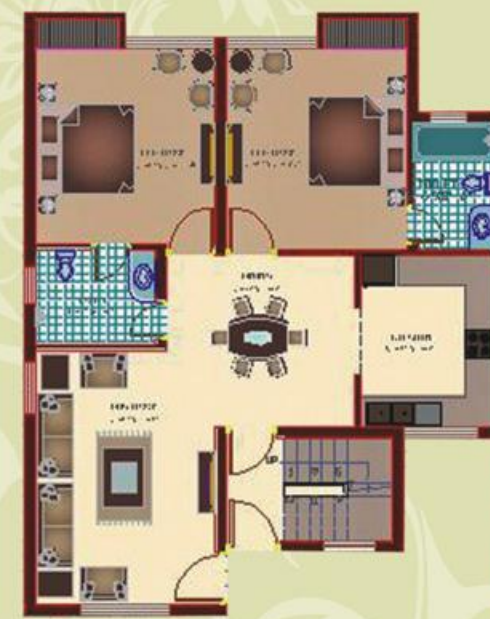


Independent luxury villas | 500 sq.yds. & 1000 sq.yds. | Optimum space management  
Neo-rich specifications | Well planned façade & stylish interiors | Special front and kitchen gardens with every unit

## Golden Villa Floor Plans



Golden Villa 1000 Sq. Yds.



Golden Villa 500 Sq. yds.





Live through the **expanse of life**



platinum *villas*  
NH-8

**Independent luxury villas**

**500 sq.yds. & 300 sq.yds.**

**Up-dated specifications**

**Designer façade & stylish interiors**

**100% power back-up**

Hardly a few paces from here stand some of the finest living spaces in the true sense. Rightly christened Platinum Villas, these independent homes come in 500 sq yd and 300 sq yd duplex editions of three bedrooms each. Each abode is characterised by spacious three bedrooms fused with ultra-modern facilities. As the day starts every morning, luxury along with virgin nature inundates you completely. What's more, every place is powered with the best global amenities.

Actual Sample Villa pictures.

Platinum Villas Floor Plans



Platinum Villa 500 Sq. yds.

Platinum Villa 500 Sq. yds.  
First Floor

Platinum Villas Floor Plans



Platinum Villa 300 Sq. yds.  
First Floor



Platinum Villa 300 Sq. yds.  
Ground Floor





## Touch **higher limits** in living

Golden Heights offers an amalgamation of matchless style, enviable aesthetics and flawless functionality that perfectly complement your lifestyle. Equipped with all the amenities, this project offers 2 & 3 BHK options to choose from. Spacious rooms with stylish windows and efficient space management add to your style. Etched passionately with neo-rich specifications and equipped with world-class amenities, Golden Heights deliver real happiness and a feeling of belonging there.

Actual sample apartment picture.





508 lifestyle apartments - approx. | Choice of 2 & 3 B/R apartments  
 1128 sq.ft. & 1630 sq.ft. area | Well managed spaces | World-class specifications

### Golden Heights Floor Plans





The style statement beyond

**Independent enhanced apartments**

**2 B/R apartments**

**Leading edge specifications**

**Well designated spaces**

Located near Golden Villas is Platinum Heights, a range of affordable and extremely well appointed apartments that spell functionality and elegance. Surrounded by lush surroundings, this complex emanates a refreshing feeling. These 2 bedroom apartments are an excellent example of futurism in the lap of nature.

Every dawn beckons you to indulge in the greenery that is invigorating and inspiring for you. It is akin to celebrating life in the lap of nature.



Actual Sample Apartment pictures.



## Where life never ends. International style club



**Well equipped gym**

**Swimming pool, Jacuzzi & Sauna**

**Indoor games like billiards**

**Tennis court, squash court**

**Kids' play area**

Golden Villas and Golden Heights, and Platinum Villas and Platinum Heights enrich life in every way. Thanks to a series of Indoor games and other activity areas that dot the place. The swimming pool is relaxing, while a few hours in the club are rejuvenating. A Jacuzzi or Sauna bath is good to recharge your body and mind. Feel high. Get spirited. Because, the evening is yours. In fact, how you spend your evening is entirely up to you. You have enough options to make your own choice-banquet facility, green area, large open spaces, different cuisines, well designed rooms, lounge for members etc.

## Specifications

### FLOORING

Vetrified tiles flooring in Drawing/Dining room & Bedroom. Anti-skid ceramic tiles for Balcony and Toilets

### BEDROOMS

3 Spacious bedrooms with attached bathrooms, Study Room. Expansive balconies attached with every bedroom.

### TOILETS

Walls tiles up to Door level with ceramic and glazed tiles, flooring done with anti-skid ceramic tiles, Fittings – Ceramic wash basin, European WC, branded chrome plated brass fittings and provision for Hot and Cold water supply in every Toilet.

### KITCHEN

Kitchen counter with Granite Top, Stainless steel sink, Glazed tiles up to 2 ft. Height above counter and chrome plated brass fittings for Hot and Cold water supply.

### WINDOW

Window frame of wood 6" X 2.5" with open able shutter with 4mm glass in Marandi wood painted with enamel paint.

### DOORS

Door frame with Marandi wood frame with Flush Door shutter. Painted both sides with enamel paint  
Fixed with Mortise lock and aluminum Tower Bolt.

### HARDWARE

Hinges & all Hardware in Steel. All doors except those in Toilets to be provided with a mortise locks.

### INTERNAL FINISHED

POP Cornice, oil bound distemper in all rooms.

### ELECTRICAL WORK

Cooper wiring, concealed conduits, protective MCB, modular switches and provision for sufficient power and light points in all rooms. TV and telephone sockets in drawing, dining and bedrooms.

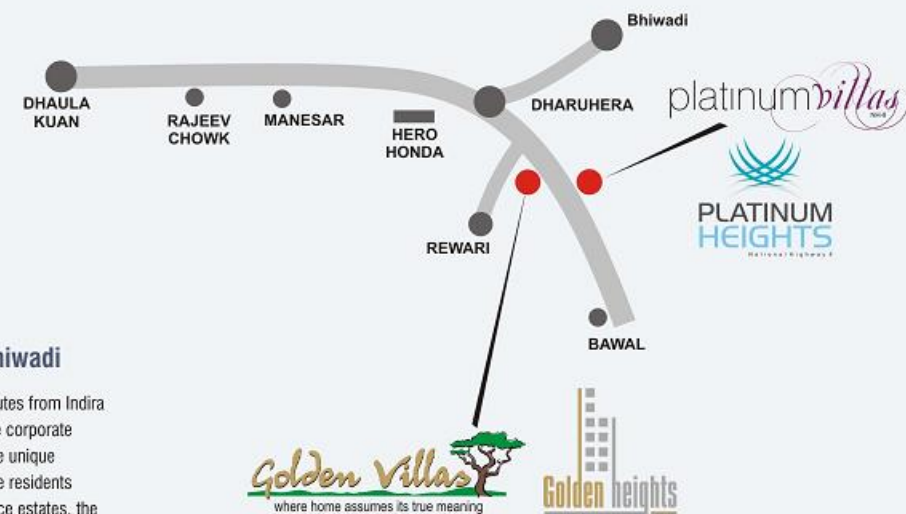
### EARTHQUAKE RESISTANT

The complex is erected by earthquake resistance RCC Framed construction with brick partition walls to ensure precise safety against any natural calamity.

## Location Map

Not to scale

Ideal location. Great connectivity.



Located on NH-8, Gurgaon

30 minutes drive from Gurgaon

45 minutes from IGI Airport

Close to industrial hubs like Manesar & Bhiwadi

The project is located on NH 8 in Gurgaon, which is only 45 minutes from Indira Gandhi International Airport in Delhi, and in close proximity to the corporate districts of Gurgaon. This means, its strategic location gives it the unique advantage of superior connectivity. Added to this, it also gives the residents multiple benefits owing to their closeness with the upcoming office estates, the inherent benefits arising out of the malls and retail centres here.



**LANDMARK GROUP**

4, Vipul Square, Sushant Lok-I, Gurgaon, Haryana T. +0124 438 0000