



GURUKRUPA
Constructing Smiles

**An Indulgence of a Lifetime
at Malad (W)**



resortment
living

AT MARINA ENCLAVE, MALAD (W)



Let mind liberate
Let soul discover soothe
Let senses rejuvenate
Let life find you

Welcome aboard to a wonderful journey of life. A journey that takes you away from city's hustle & bustle. An eternal escape to the endless greens. A never-ending vacation to themed Landscapes. With fresher air to breathe and rejoicing social avenues that create a unique experience of a resort life, this unforgettable journey always begins and ends at your home.

Welcome to Mumbai's one-of-its-kind 'Resortment Living', where life of a resort comes along with your apartment.

Green Retreat



Acres of Panoramic
Green View



Large Open Spaces
with Abundant View



Themed Landscaping
with Green Foliage

Fresh Breath



An Area with Tree Trails & Plantations away from the City Pollution



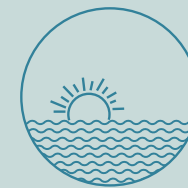
Enhanced Air Quality & Pristine Environment



An Area with Abundance of Fresh Breeze



Scenic View



Panoramic View of Sunset



Mesmerising View of
'Global Vipassana Centre (Pagoda)'



Enchanting View of
Themed Landscaped Podium

Mumbai's Landmark Address,

More like a Resort-Most like a Home



resortment
living

AT MARINA ENCLAVE, MALAD (W)

Project Highlights

- Well-planned 2 & 3 BHK Luxury Residences
- 10,000 Sq. Ft. of Lavish Club Life
- Most Indulgent Lifestyle Amenities
- Close to Proposed Coastal Road (2.5 Kms) & Under Construction Metro Line (3 Kms)
- Adequate Vehicle Parking Space
- Gated Community with Advanced Security & CCTV Surveillance

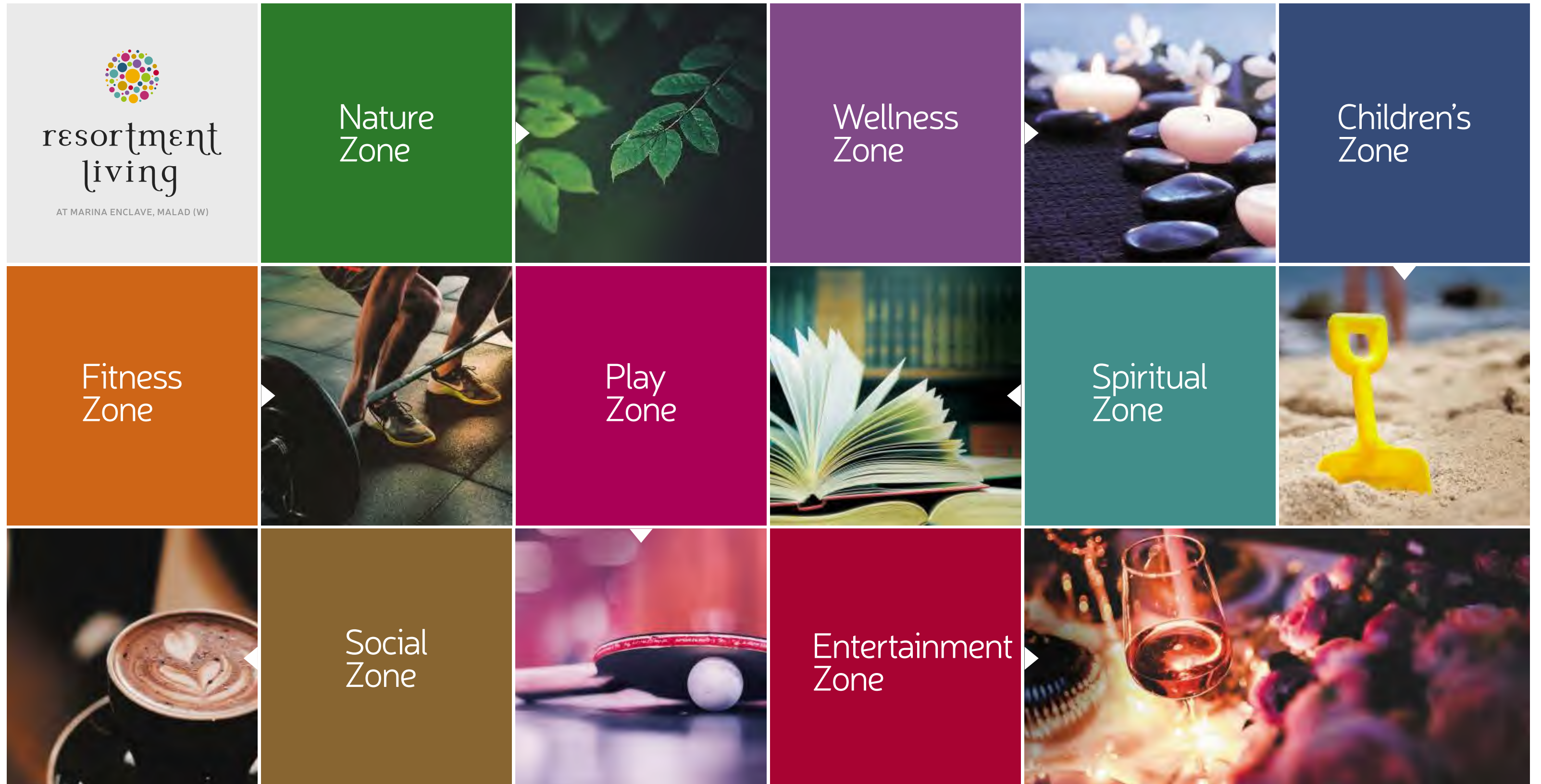
Grand Arrival

A Magnificent Entrance with Well-secured Entry & Exit Points



Happiness All-around

Best Avenues of Health & Recreation in 8 Exclusive Lifestyle Zones



Nature's Bliss

A Green Carpet Welcome at the Zone of Nature



Nature Zone

- Green landscaping
- Aroma garden
- Herbal boulevard



Health Code

A Zone to Rediscover Fit Bodies & Healthy Minds

Fitness Zone

- Clubhouse with Well-equipped gymnasium
- Swimming pool
- Jogging track
- Cycling track



Fitness Regime

Stay Fit at a well-equipped Gymnasium overlooking Swimming Pool



Play Zone

Cherish Luxury & Leisure Life at Curated Putting Green

- Multipurpose court with badminton, volleyball, basketball
- Net cricket pitch
- Putting Green



Win Hearts

A Well-appointed Indoor Games Area to Gather & Play

- Table-tennis
- Carrom & chess
- Pool Table



Pamper Senses

Discover True Sense of Rejuvenation at Wellness Zone

Wellness Zone

- Therapeutic Spa
- Steam & Jacuzzi
- Yoga & meditation corner
- Reflexology pathway



Cherish Togetherness

A Thoughtful Zone to Socialise and Get Together

Social Zone

- Chit chat garden
- Banquet hall



Fun Engagements

Learn with Fun at a Well-appointed Activity Area for Kids



Nurturing Childhood

Sports & Hobby Amenities for Kids at Active Children's Zone

Children's Zone

- Kids play park with modern equipment
- Kids pool
- Kids activity & hobby centre



Explore Divinity

A Soulful Spiritual Zone to Get Enlightened

Spiritual Zone

- Library with spiritual books collection
- Spiritual message wall
- Gazebos



Cinematic Moments



A Private Theatre to Enjoy Movies



Actual Photograph, Shot at Site - June 2018

Class-above Conveniences

Thoughtfully Planned Tower Features & Community Lifestyle Features

- Elegant lobbies in each tower
- High-speed lifts with designer lobbies
- Advanced security and CCTV surveillance in common area
- Adequate Vehicle Parking Spaces





Never-ending Joys

Explore Fun Moments at the Most Eventful Entertainment Zone



Image for representation purpose only

Entertainment Zone

- Open-air amphitheatre
- Mini-theatre for movie experience



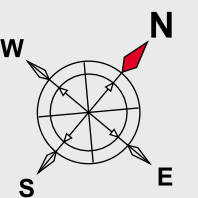
Actual Photograph, Shot at Site - June 2018

Complex Layout



- 10 acres of complex layout surrounded with acres of open space
- Around 3 acres of recreational area spread across podium and ground level
- Large podium catering need of parking
- Dedicated visitor parking
- Landscape garden and other features of RG area design by renowned Mr. Arun Kumar & Associates

Disclaimer: Location of amenities and other MEP related services are indicative and subject to change for the betterment of the layout and / or to meet any statutory requirements of the approval authorities. Work will be carried out in phase wise manner



NOT TO SCALE

Future Connect

A Futuristic Location Offering
Best Connectivity & Access

Entry Point of Proposed Coastal Road from
Malad (w) to Bandra-Worli Sea Link (2.5 Kms)



Proposed Metro Station at Mith Chowki
on Metro Line 2 (Dahisar to Mankhurd) - 51 kms with
39 Metro Stations*



Proposed Road Connecting Marve Road, Malad
with Charkop - Touching the Complex



* The above mentioned information is derived from
<https://mmrda.maharashtra.gov.in> dated june, 2018, Subject to change

Landmark Location

Advantageous Address with Everything within Easy Reach



Location Advantages

-  Western Mumbai's most promising present & future location
-  Well-connected with Malad Link Road, Marve Road & SV Road
-  Proximity to Marve Beach - 4.6 Kms
-  Very close to Billabong High School & Atharva College of Engineering
-  Inorbit Mall - 7.8 Kms
Infinity Mall - 5.1 Kms
Mindspace - 4.9 Kms
-  Essel World & Water Kingdom - 9.5 Kms
-  Global Vipassana Centre (Pagoda) - 9.6 Kms
-  Proximity to major schools, colleges, malls, multiplexes, shopping centres, banks, ATMs, hospitals- 5 Km radius

The above mentioned distance is indicative & measured from Google map
Subject to variation

Marina Enclave at a Glance

Project Highlights

- Well-planned 2 & 3 BHK Luxury Residences
- 10,000 Sq. Ft. of Lavish Club Life
- Most Indulgent Lifestyle Amenities
- Close to Proposed Coastal Road (2.5 Kms) & Under Construction Metro Line (3 Kms)
- Adequate Vehicle Parking Spaces
- Gated Community with Advanced Security & CCTV Surveillance

Features & Amenities Spread Across 8 Lifestyle Zones

Nature Zone

- Green landscaping
- Aroma garden
- Herbal boulevard

Fitness Zone

- Clubhouse with well-equipped gymnasium
- Swimming pool
- Jogging track
- Cycling track

Play Zone

- Multipurpose court with badminton, volleyball, basketball
- Indoor games with table-tennis, carom, chess etc.
- Net cricket pitch
- Putting Green

Social Zone

- Chit chat garden
- Banquet hall

Wellness Zone

- Therapeutic Spa
- Steam & Jacuzzi
- Yoga & meditation corner
- Reflexology pathway

Spiritual Zone

- Library with spiritual books collection
- Spiritual message wall
- Gazebos

Children's Zone

- Kids play park with modern equipment
- Kids pool
- Kids activity & hobby centre

Entertainment Zone

- Open-air amphitheatre
- Mini-theatre for movie experience

Tower Features & Community Facilities

- Elegant lobbies in each tower
- High-speed lifts with designer lobbies
- Advanced security and CCTV surveillance in common areas
- Adequate Vehicle Parking Spaces

Apartment Specifications

- Elegant living room with vitrified tiled flooring
- Spacious bedroom with sliding windows
- Refreshing bathrooms with reputed brand sanitary ware
- Modern kitchen layout with granite platform & SS sink
- Intercom facility in each apartment
- Ample electrical points and branded fitments
- Branded Plastic paints on interior walls
- Designer tiles in bathroom and kitchen
- Provision for exhaust fan, washing machine, TV, telephone etc.

www.gurukrupagroup.com



Site Office: Marina Enclave, 90 Feet Road, Behind Bhoomi Park, Near Jankalyan Nagar, Malad – West, Mumbai – 400 095

MahaRera No.: P51800016874 (Marina Enclave – Wing M & N) (<https://maharera.mahaonline.gov.in>)

through/1818

Disclaimer: This Advertisement/printed material does not constitute an offer or contract of any nature whatsoever between the promoters and the recipient. All transactions in this development shall be subject to and governed by the terms & conditions of the agreement for sale to be entered into between the parties. All internal dimensions for carpet area are from unfinished wall surfaces. Minor variations up to (+/-) 3% in actual carpet areas may occur on account of site conditions/ columns / finishes etc. In toilets, the carpet areas are inclusive of ledge walls (if any). Conversion: 1sq. Mtr. = 10.764 sq. ft. 1meter = 3.28 feet *T&C Apply.