  
**RAHEJA  
RESIDENCY**  
GIFT YOURSELF A LUXURIOUS LIFESTYLE!  
MALAD (EAST)

SPACES THAT ARE PRICELESS.  
HOMES THAT ARE LUXURIOUS.  
GIFT YOURSELF  
A LUXURIOUS LIFESTYLE!



LIFESTYLE FOR A LIFETIME

SINCE 1956  
 **RAHEJA  
REALTY**

A photograph of a young couple sitting on a light-colored sofa in a bright, modern living room. The woman has long dark hair and is smiling warmly. The man is wearing a blue turban and a light blue shirt, also smiling. They are embracing each other. The background shows a well-lit interior with a window and a ceiling light fixture.

**RAHEJA  
RESIDENCY**

GIFT YOURSELF A LUXURIOUS LIFESTYLE!

MALAD (EAST)

Introducing you to a life you've aspired for, and world-class designs you've always yearned for. This premium project by K Raheja Realty is adorned with every necessary convenience of city life. Raheja Residency is a truly one-of-its-kind opportunity for you to reside in an elite community of like-minded individuals that exudes the grace of being synonymous with luxury and matchless comfort. Raheja Residency is also in close proximity to prominent schools and colleges, Hospitals, banking institutions, and entertainment destinations, to mention just a few. It will surely be a decision that will elevate your life to absolute bliss.

MAKE EVERY MORNING REFRESHING.

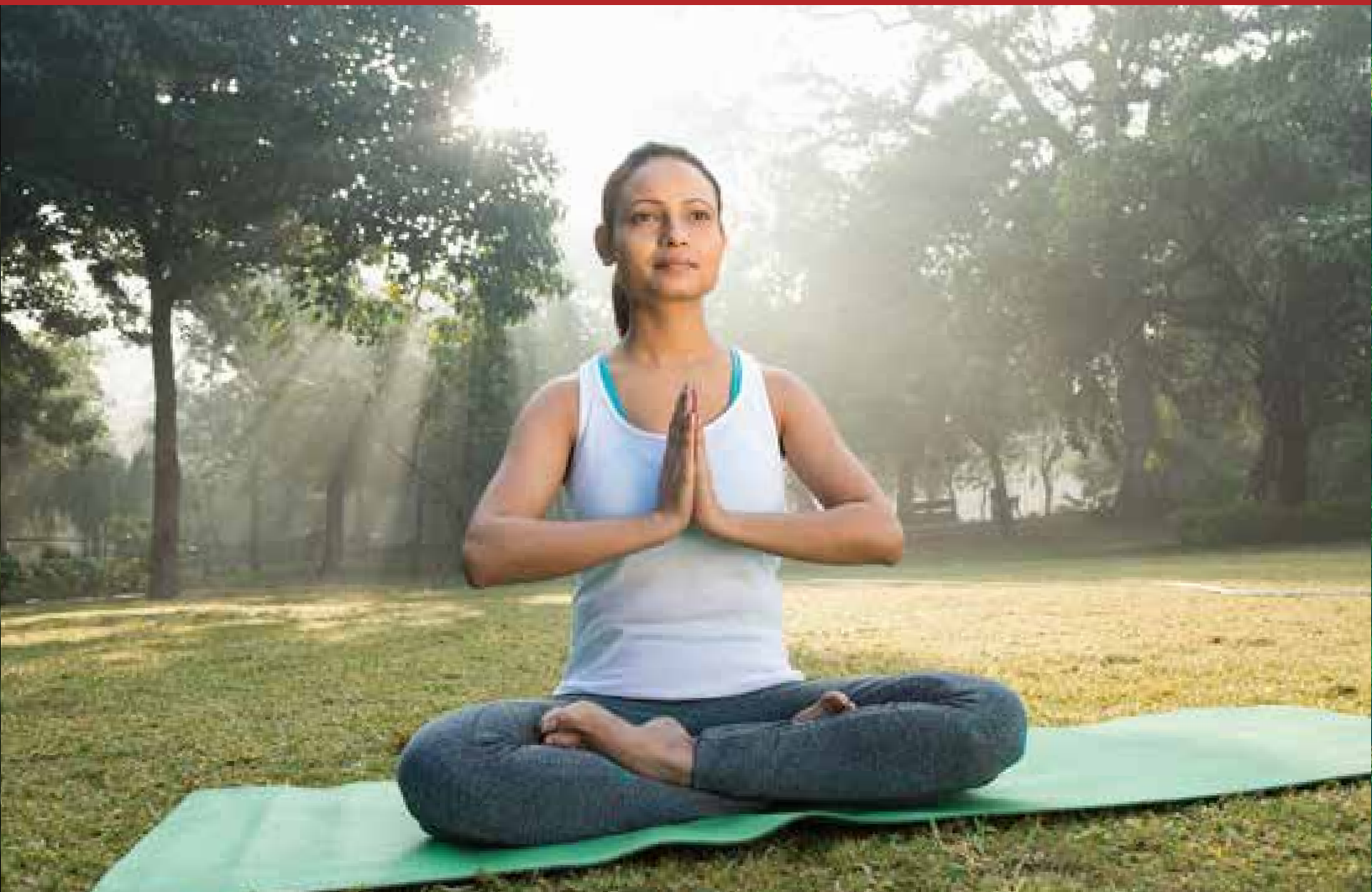


**RAHEJA  
RESIDENCY**

GIFT YOURSELF A LUXURIOUS LIFESTYLE!

MALAD (EAST)


CALM AND SERENE SURROUNDINGS ALWAYS.




**RAHEJA  
RESIDENCY**

GIFT YOURSELF A LUXURIOUS LIFESTYLE!

MALAD (EAST)



  
**RAHEJA  
RESIDENCY**  
GIFT YOURSELF A LUXURIOUS LIFESTYLE!  
MALAD (EAST)

At K Raheja Realty's Raheja Residency, connectivity to Western Express Highway and Goregaon Mulund Link Road plays a major role. Shorter Distances now helps prioritise your comfort and Convenience. Gift yourself the Luxurious Lifestyle with Raheja Residency Homes!

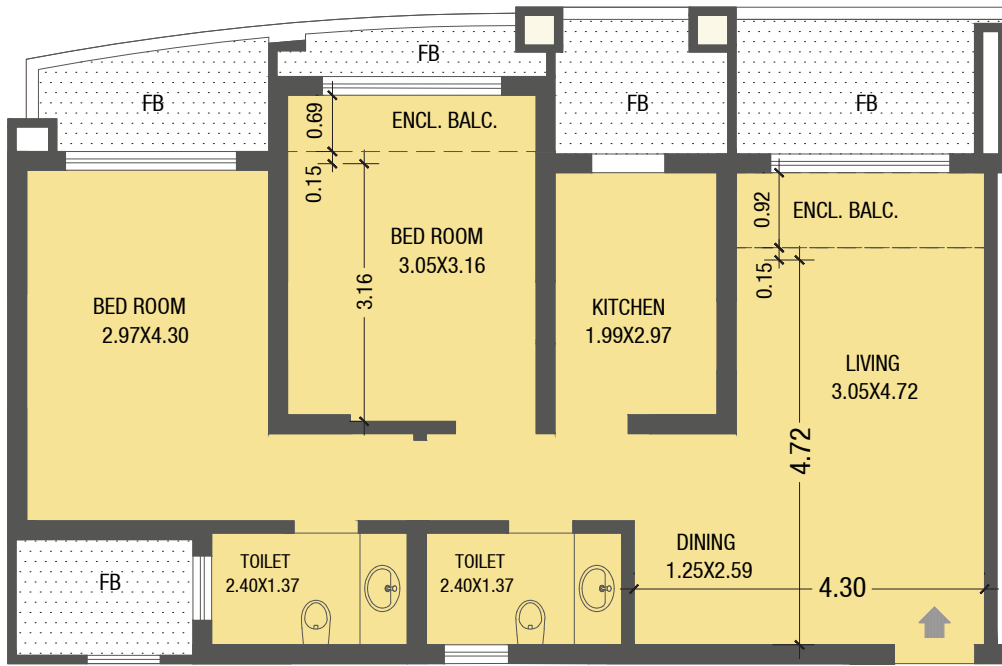
  
**RAHEJA  
RESIDENCY**  
GIFT YOURSELF A LUXURIOUS LIFESTYLE!  
MALAD (EAST)



Actual Images



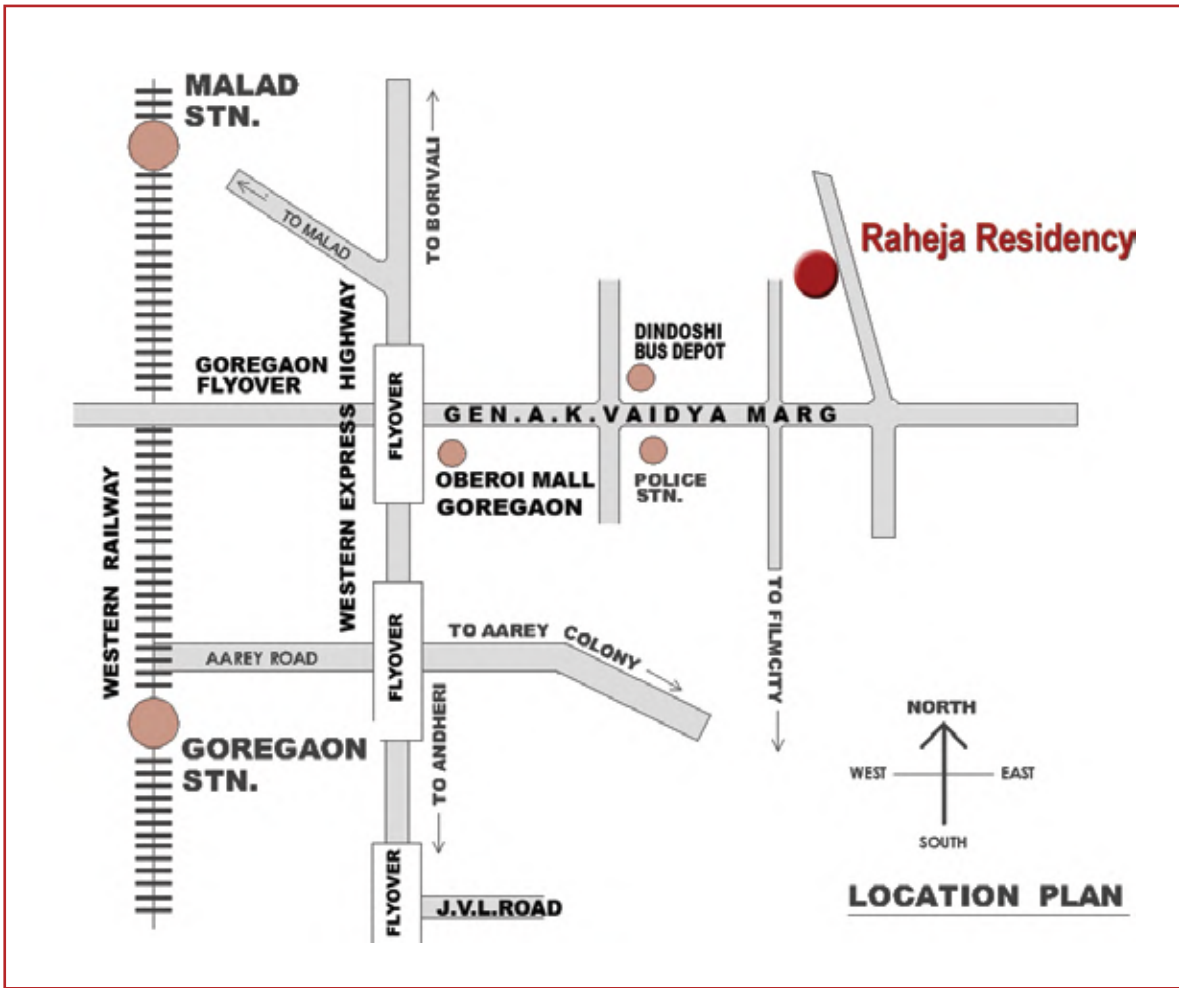
UNIT PLAN (2 BHK)  
Flat no. 1, 2, 3 & 4 of Bldg.F



RAHEJA RESIDENCY  
TYPICAL FLOOR PLAN  
(2<sup>nd</sup> to 6<sup>th</sup>, 8<sup>th</sup> to 13<sup>th</sup>, 15<sup>th</sup> to 20<sup>th</sup>)  
Proposed residential building - F  
at Malad (East), Mumbai.

LIFESTYLE FOR A LIFETIME





**K RAHEJA REALTY**

Construction house 'B', 2nd flr., Opp. Khar Telephone Exchange,  
623, Linking Road, Khar (West), Mumbai 400 052. India

PHONE: 022 61313131

[sales@krahejarealty.com](mailto:sales@krahejarealty.com) | [www.facebook.com/krahejarealty](http://www.facebook.com/krahejarealty)

[www.instagram.com/krahejarealty](http://www.instagram.com/krahejarealty) | [www.krahejarealty.com](http://www.krahejarealty.com)

9324907519 | 9324907518

L I F E S T Y L E   F O R   A   L I F E T I M E

