

mansions  
— PARK PRIME —

LIVE IN STYLE

MAKE A STATEMENT AT MANSIONS.

REJUVENATE IN YOUR LUXURY  
APARTMENT AND TOUCH THE SKIES  
AT THE SAME TIME!

[www.bptp.com](http://www.bptp.com)



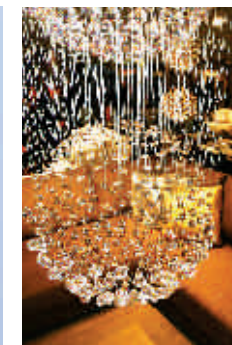
mansions  
— PARK PRIME —

Welcome to Mansions, state-of-the-art 4 BHK duplex apartments with high-ceiling  
and high-end specifications in Sector 66, Gurgaon.

Mansions are spacious, well designed apartments which compliment the modern lifestyle of the residents.



Artistic Impression



- 11 ft. ceiling height (floor to floor) for villa like feel
- Modern efficient VRV/VRFT air conditioning system for temperature control
- Cubical shower with steam
- 70% open area for landscaped surrounding
- Ultra modern high-end specifications like, modular kitchen, woodwork in all bedrooms, imported marble, POP & Cornish





- Located on the proposed 60 mtrs sector road
- Approachable from both Golf Course Extension Road & Sohna Road via broad sector roads
- In-close vicinity to schools like Heritage and G.D. Goenka
- Good connectivity to shopping malls located on the MG Road & Sohna Road
- In close vicinity to hospitals

mansions  
PARK PRIME

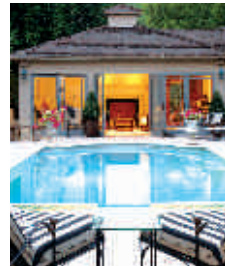


RELISH THE CLASSY  
UNIQUENESS AND  
STAY STYLISH!





- Exclusive club
- Swimming pool with state-of-the-art health facilities
- Jogging tracks and Kids' hangouts
- In-complex daily shopping facilities



mansions  
PARK PRIME

DELVE DEEPER  
INTO THE NUANCES  
OF LUXURY & STYLE



**Accommodation:** 4 BHK + Servant Room  
**Saleable Area:** 2764 sq. ft. (256.78 sq. mtrs.)

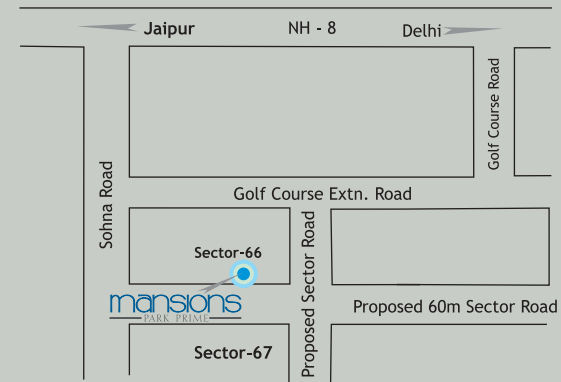
**Lower Level Plan**

mansions  
PARK PRIME





Upper Level Plan



Location map  
(Not to scale)



SITE PLAN

# SPECIFICATIONS

## Wall Finish

### Internal

Living/Dining/Bedrooms/Lounge	:	Painted in pleasing shades of Acrylic Emulsion Paint
Servant Room	:	Painted in Oil Bound Distemper
Lift Lobbies	:	Selected Marble/Granite cladding & Acrylic Emulsion Paint
Ceiling	:	POP Cornish in Living/Dining/Lounge & all Bedrooms

### External

Façade of Towers	:	Textured Paint Finish & Glazing
------------------	---	---------------------------------

### Wardrobes

:	In all Bedrooms
---	-----------------

### Flooring

Living/Dining	:	Imported Marble
Bedrooms	:	Laminated Wooden/Vitrified Tiles
Servant Room	:	Vitrified Tiles
Balcony	:	Anti Skid Ceramic Tiles
Lift Lobbies	:	Selected Granite/Marble
Terrace	:	Anti Skid Ceramic Tiles

### Kitchen

:	Modular Kitchen Cabinets with Ultra Modern Chimney & Hub	
Flooring	:	Vitrified Tiles
Dado	:	Ceramic Tiles above working Platform, rest Acrylic Emulsion Paint
Platform	:	Granite Counter with Double Bowl Stainless Steel Sink, Drain Board & Geysers

### Toilets

Dado	:	Selected Ceramic Tiles
Flooring	:	Anti Skid Ceramic Tiles
Fixtures & Fittings	:	Cubical Shower with Steam, Washbasin, Exhaust Fan, Imported CP Fittings & Granite Counters

### Windows

:	UPVC, Double Glazed Windows in Dining Area
---	--

### Doors

:	Seasoned Hardwood Frames with European Style Moulded Shutters on Main Door
---	--

### Electrical

:	Conduit Copper Electrical Wiring for all Light & Power Points
---	---

### Air Conditioning

:	VRV/VRFT System
---	-----------------

### Others

:	11 ft. Ceiling Height (floor to floor) on Lower Level, Double Height Lift lobby on each floor & Double Height Dining Area. High Speed elevators. CCTV in basement and main Entrance lobby for Surveillance. Concierge desk with Intercom in each Lobby
---	--

### Club

:	Recreational Club with Swimming Pool, Jogging Tracks & Kids' Hangouts
---	---

\*Architects and the developers reserve the right to alter the specifications and facilities.



## Marketing Office

### **BPTP Limited**

5th Floor, DCM Building, 16, Barakhamba Road  
Connaught Place, New Delhi -110001

**Tel.** +91-11-3046 2787/4359 0000 **Fax.** +91-11-4151 3938

**E-mail.** residential@bptp.com | SMS<BPTP> to 57575

"BPTP Limited proposes, subject to receipt of requisite approvals, market conditions and other considerations, to make an initial public offer of its equity shares and has filed a Draft Red Herring Prospectus ("DRHP") with the Securities and Exchange Board of India ("SEBI"). The DRHP is available on the website of SEBI at [www.sebi.gov.in](http://www.sebi.gov.in) as well as on the websites of the book running lead managers at [www.idfcski.com](http://www.idfcski.com) and [www.jpmpil.com](http://www.jpmpil.com). Investment in equity shares involves a high degree of risk and for details relating to the same, please refer to the section titled "Risk Factors" of the DRHP. The equity shares of BPTP Limited have not been and will not be registered under the U.S. Securities Act 1933, as amended ("U.S. Securities Act"), or any state securities laws in the United States and may not be offered or sold in the United States, except pursuant to an exemption from, or in a transaction not subject to, the registration requirements of the U.S. Securities Act. This announcement has been prepared for publication in India and may not be released in the United States. This announcement does not constitute an offer for sale of securities in any jurisdiction, including the United States. BPTP Limited does not intend to register any portion of the offering in the United States or to conduct a public offering of equity shares or any other securities in the United States."

\*Architects and the developers reserve the right to alter the specifications and facilities for design improvement. This brochure is purely conceptual and not a legal offering. The developer reserves the right to amend/alter the area, layout, elevations, specifications and amenities. Elevation, photographs/images used in the brochure are purely artistic in nature and tend to change with/without prior notice.