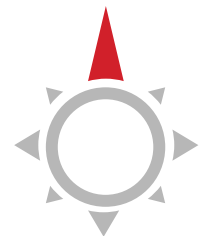


# Annexure



Peninsula AshokVann MahaRERA registration numbers: Phase 1: P52100046962 | Phase 2: P52100046842 | Phase 3: P52100046963 details available at <https://maharera.mahaonline.gov.in> under registered projects.

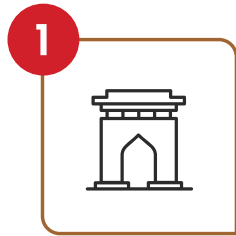
BeyondWalls MahaRERA number: A52100030372 details available at <https://maharera.mahaonline.gov.in>

Please Note: This advertisement does not constitute an offer and/or acceptance under any statute of any nature whatsoever. The terms and conditions of sale shall be only as incorporated in booking form, cost sheet, allotment letter and Agreement for Sale. Prices are inclusive of Govt Taxes, Society Charges and Maintenance charges. \*Prices will vary basis selection of the inventory. \*Amenities mentioned in this brochure are subject to change without any prior notice or intimation. \*The images of the project are merely the artist's conception of the project. The models in the image used are only for representation purpose. We are offering for sale only NA Plots and the add-ons such as construction and fixtures shown in the marketing materials will not form part of any contract/offer unless specifically incorporated in the Agreement for Sale. Amenities mentioned are subject to approvals and availability. For details of amenities contact sales office. Clubhouse shall not be part of the project. The factual information present in this brochure is procured via general research through digital medium.

\*Prices are subject to change without any prior notice or intimation. Terms and Conditions Apply.

# 19 Acres of Garden Living

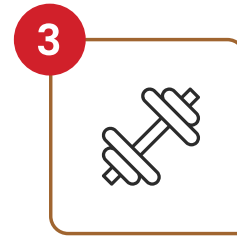
---



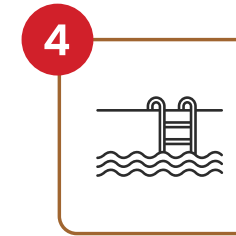
Entrance 1



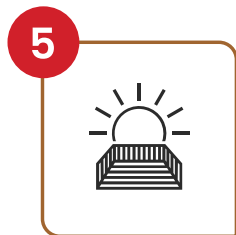
Entrance 2



Central Clubhouse



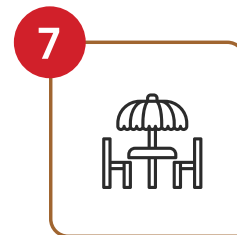
Swimming Pool



Park 1



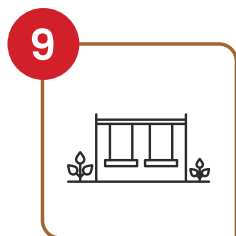
Park 2



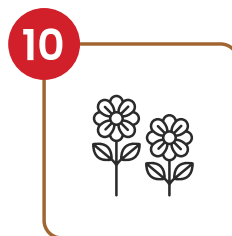
Park 3



Park 4



Park 5



Park 6



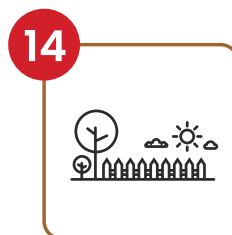
Park 7



Park 8



Park 9



Park 10



Proposed School



Proposed Commercial





Peninsula AshokVann MahaRERA registration numbers: Phase 1: P52100046962 | Phase 2: P52100046842 | Phase 3: P52100046963 details available at <https://maharera.mahaonline.gov.in> under registered projects.

BeyondWalls MahaRERA number: A52100030372 details available at <https://maharera.mahaonline.gov.in>

Please Note: This advertisement does not constitute an offer and/or acceptance under any statute of any nature whatsoever. The terms and conditions of sale shall be only as incorporated in booking form, cost sheet, allotment letter and Agreement for Sale. Prices are inclusive of Govt Taxes, Society Charges and Maintenance charges. \*Prices will vary basis selection of the inventory. \*Amenities mentioned in this brochure are subject to change without any prior notice or intimation. \*The images of the project are merely the artist's conception of the project. The models in the image used are only for representation purpose. We are offering for sale only NA Plots and the add-ons such as construction and fixtures shown in the marketing materials will not form part of any contract/offer unless specifically incorporated in the Agreement for Sale. Amenities mentioned are subject to approvals and availability. For details of amenities contact sales office. Clubhouse shall not be part of the project. The factual information present in this brochure is procured via general research through digital medium.

\*Prices are subject to change without any prior notice or intimation. Terms and Conditions Apply.



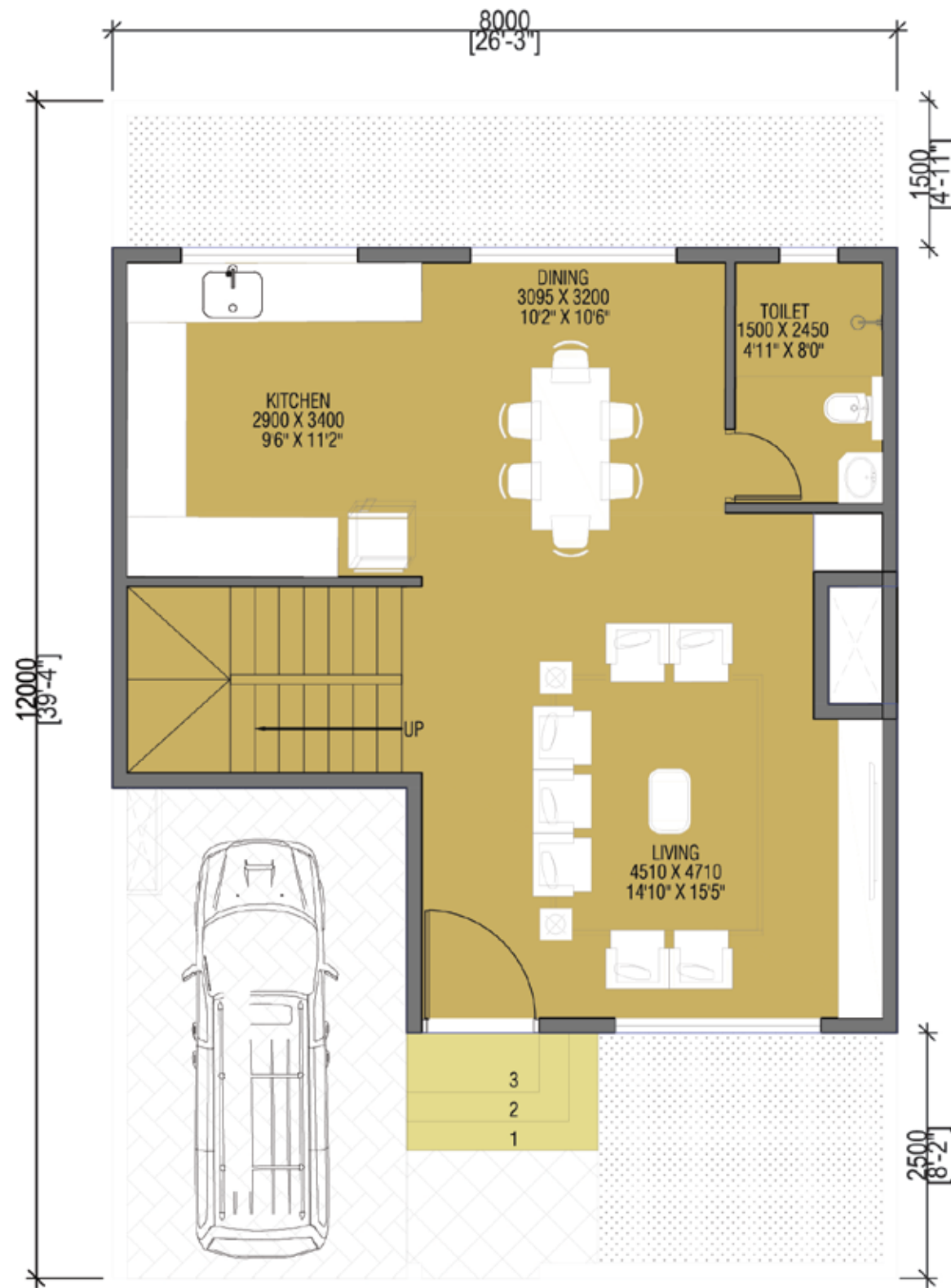


Peninsula AshokVann MahaRERA registration numbers: Phase 1: P52100046962 | Phase 2: P52100046842 | Phase 3: P52100046963 details available at <https://maharera.mahaonline.gov.in> under registered projects.

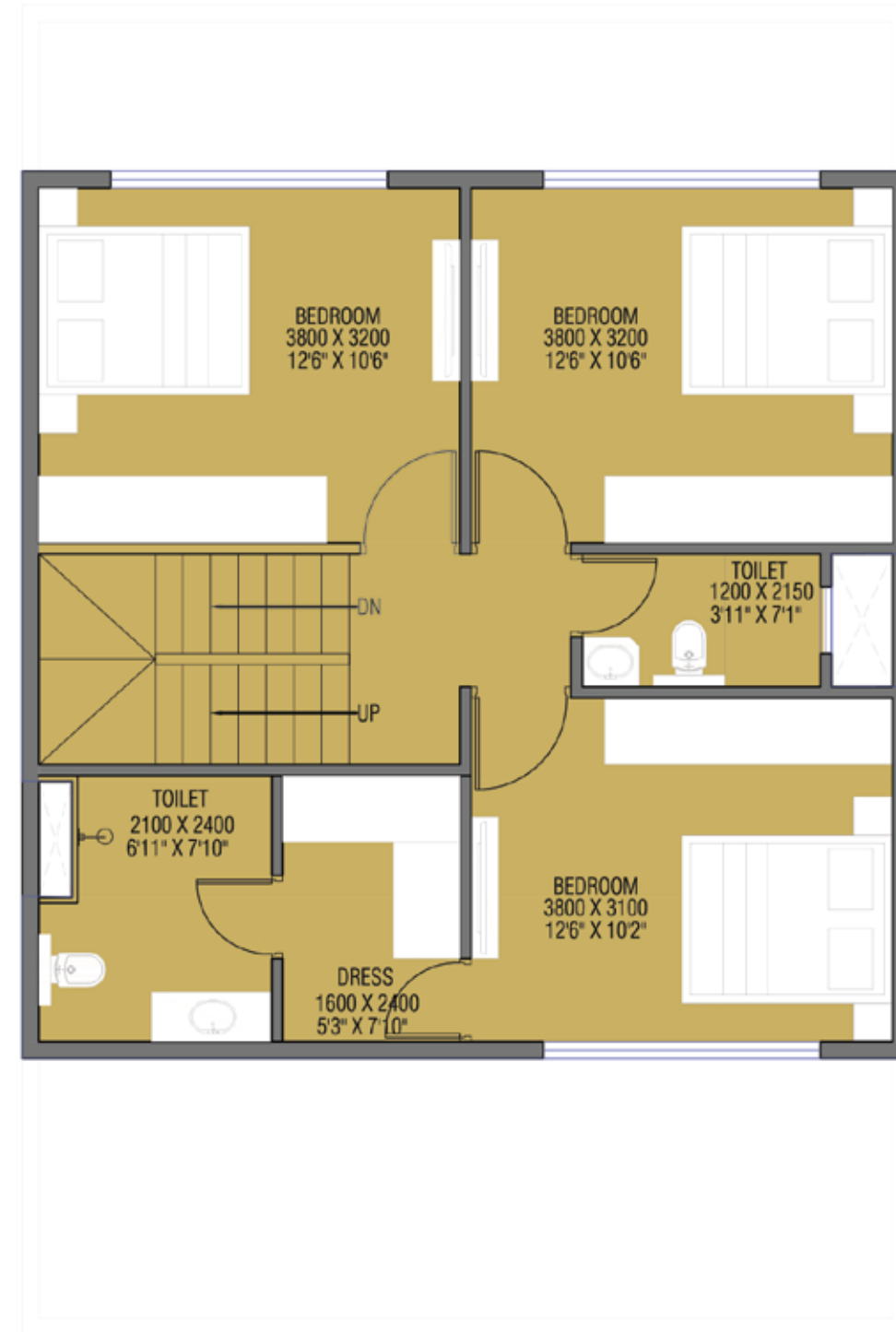
BeyondWalls MahaRERA number: A52100030372 details available at <https://maharera.mahaonline.gov.in>

Please Note: This advertisement does not constitute an offer and/or acceptance under any statute of any nature whatsoever. The terms and conditions of sale shall be only as incorporated in booking form, cost sheet, allotment letter and Agreement for Sale. Prices are inclusive of Govt Taxes, Society Charges and Maintenance charges. \*Prices will vary basis selection of the inventory. \*Amenities mentioned in this brochure are subject to change without any prior notice or intimation. \*The images of the project are merely the artist's conception of the project. The models in the image used are only for representation purpose. We are offering for sale only NA Plots and the add-ons such as construction and fixtures shown in the marketing materials will not form part of any contract/offer unless specifically incorporated in the Agreement for Sale. Amenities mentioned are subject to approvals and availability. For details of amenities contact sales office. Clubhouse shall not be part of the project. The factual information present in this brochure is procured via general research through digital medium.

\*Prices are subject to change without any prior notice or intimation. Terms and Conditions Apply.



**GROUND FLOOR**



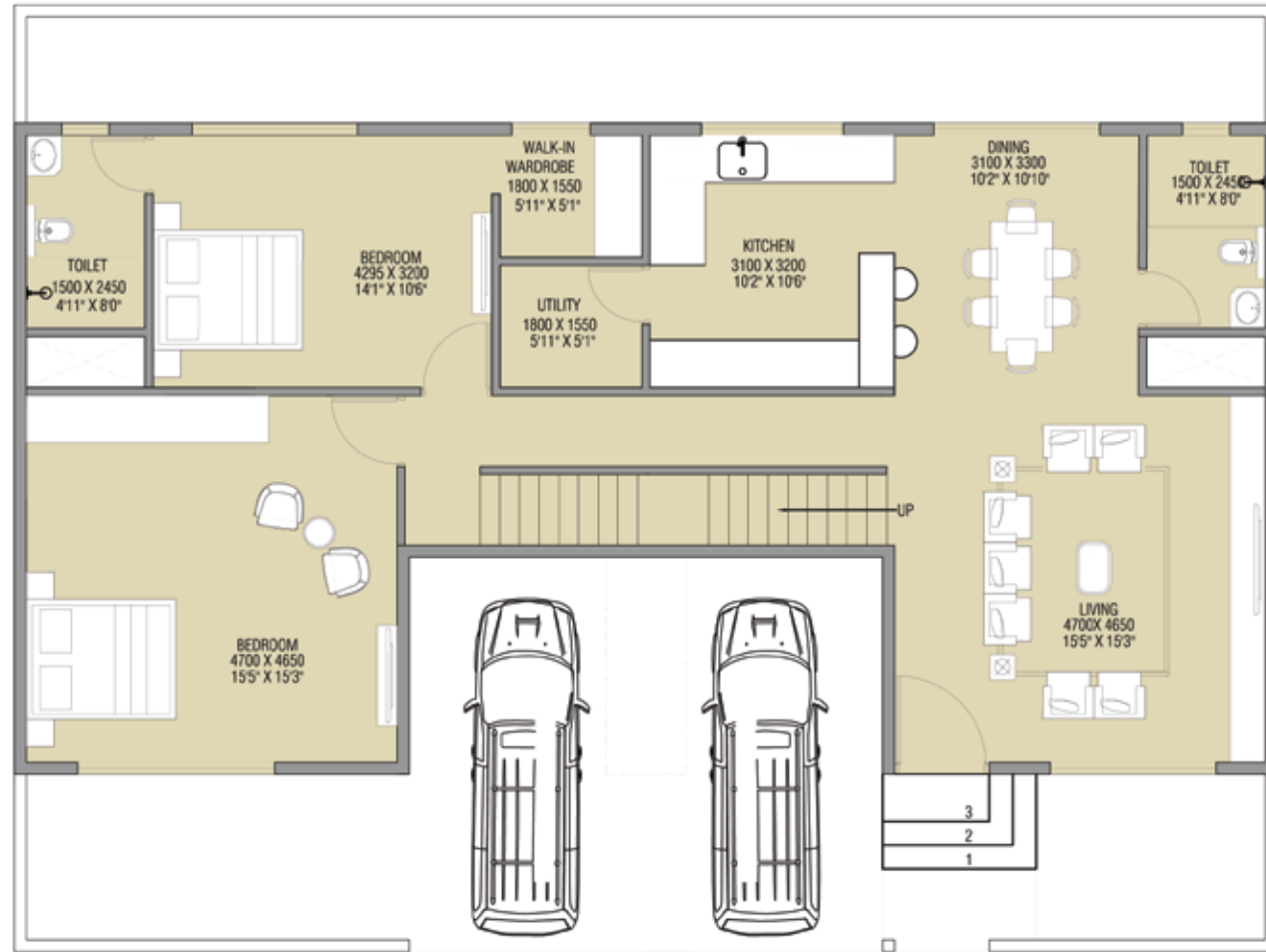
**FIRST FLOOR**

Peninsula AshokVann MahaRERA registration numbers: Phase 1: P52100046962 | Phase 2: P52100046842 | Phase 3: P52100046963 details available at <https://maharera.mahaonline.gov.in> under registered projects.

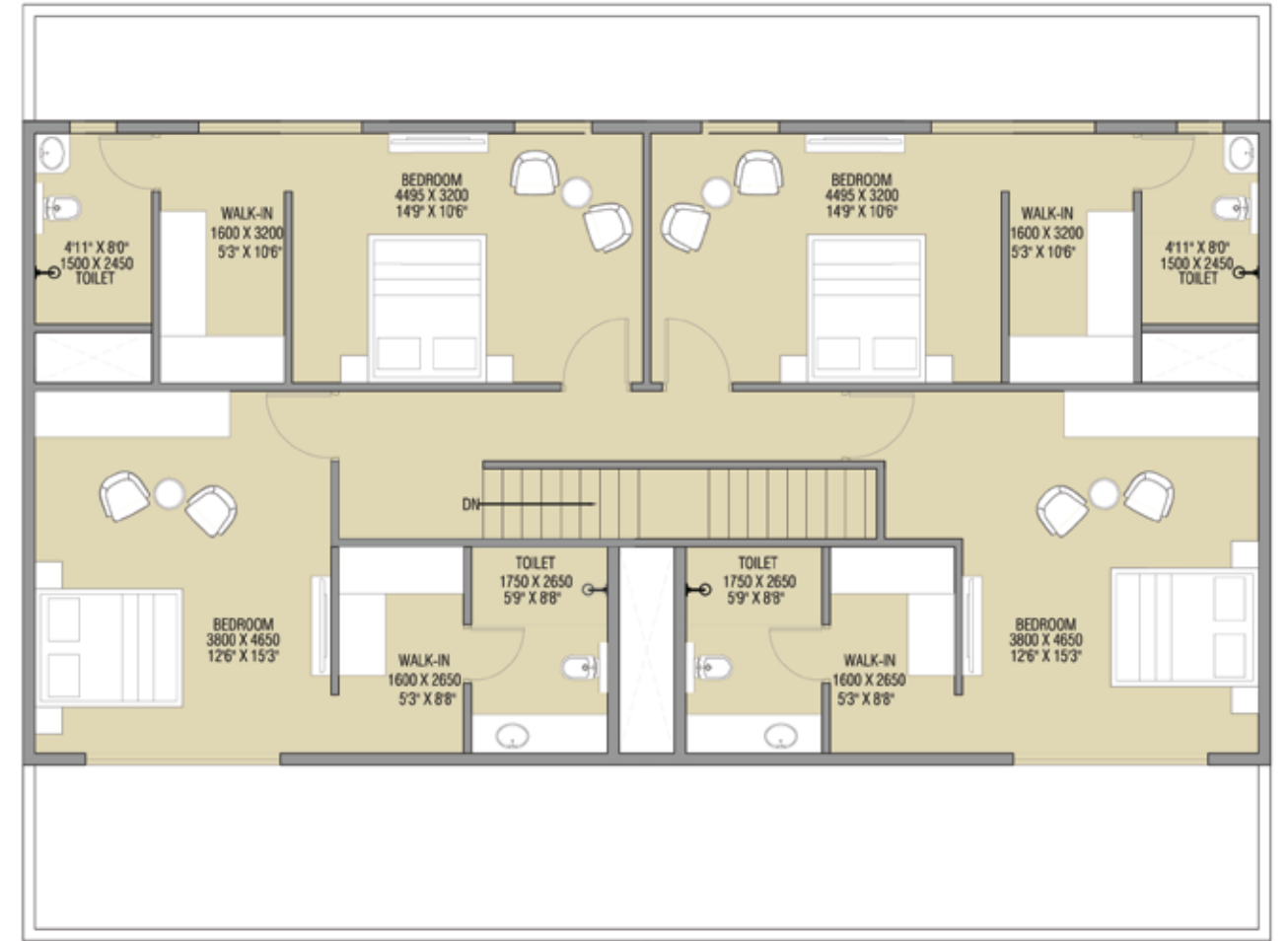
BeyondWalls MahaRERA number: A52100030372 details available at <https://maharera.mahaonline.gov.in>

Please Note: This advertisement does not constitute an offer and/or acceptance under any statute of any nature whatsoever. The terms and conditions of sale shall be only as incorporated in booking form, cost sheet, allotment letter and Agreement for Sale. Prices are inclusive of Govt Taxes, Society Charges and Maintenance charges. \*Prices will vary basis selection of the inventory. \*Amenities mentioned in this brochure are subject to change without any prior notice or intimation. \*The images of the project are merely the artist's conception of the project. The models in the image used are only for representation purpose. We are offering for sale only NA Plots and the add-ons such as construction and fixtures shown in the marketing materials will not form part of any contract/offer unless specifically incorporated in the Agreement for Sale. Amenities mentioned are subject to approvals and availability. For details of amenities contact sales office. Clubhouse shall not be part of the project. The factual information present in this brochure is procured via general research through digital medium.

\*Prices are subject to change without any prior notice or intimation. Terms and Conditions Apply.



**GROUND FLOOR**



**FIRST FLOOR**

Total Plot Area: \_\_\_\_\_ **2066 sq.ft**  
 Permissible Built-Up Area (@ 1.4 FSI): \_\_\_\_\_ **2893.36 sq.ft**  
 2.5 BHK Row House: \_\_\_\_\_ **2613 sq.ft**  
 Balance Built-up area: \_\_\_\_\_ **280 sq.ft**

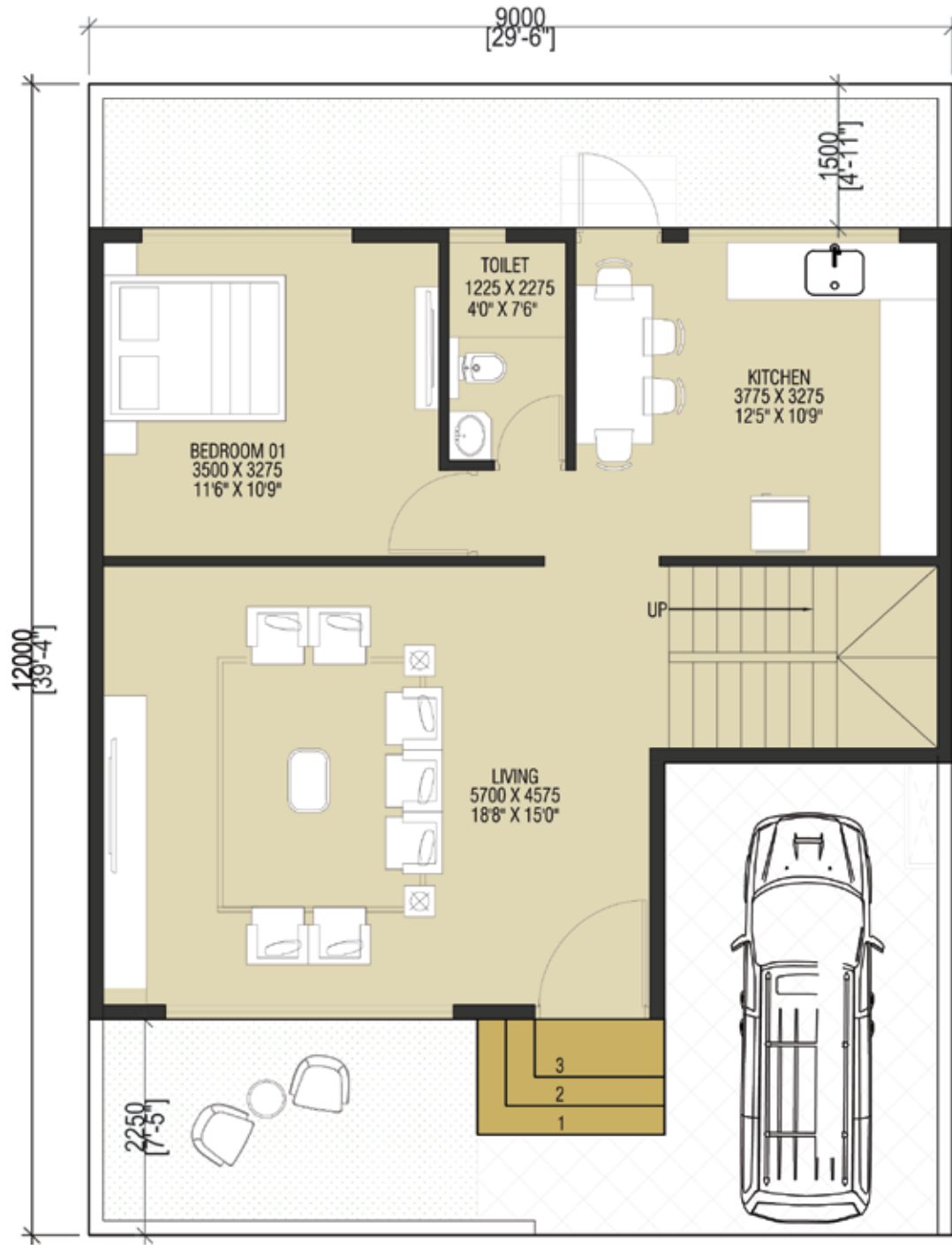
Peninsula AshokVann MahaRERA registration numbers: Phase 1: P52100046962 | Phase 2: P52100046842 | Phase 3: P52100046963 details available at <https://maharera.mahaonline.gov.in> under registered projects.

BeyondWalls MahaRERA number: A52100030372 details available at <https://maharera.mahaonline.gov.in>

Please Note: This advertisement does not constitute an offer and/or acceptance under any statute of any nature whatsoever. The terms and conditions of sale shall be only as incorporated in booking form, cost sheet, allotment letter and Agreement for Sale. Prices are inclusive of Govt Taxes, Society Charges and Maintenance charges. \*Prices will vary basis selection of the inventory. \*Amenities mentioned in this brochure are subject to change without any prior notice or intimation. \*The images of the project are merely the artist's conception of the project. The models in the image used are only for representation purpose. We are offering for sale only NA Plots and the add-ons such as construction and fixtures shown in the marketing materials will not form part of any contract/offer unless specifically incorporated in the Agreement for Sale. Amenities mentioned are subject to approvals and availability. For details of amenities contact sales office. Clubhouse shall not be part of the project. The factual information present in this brochure is procured via general research through digital medium.

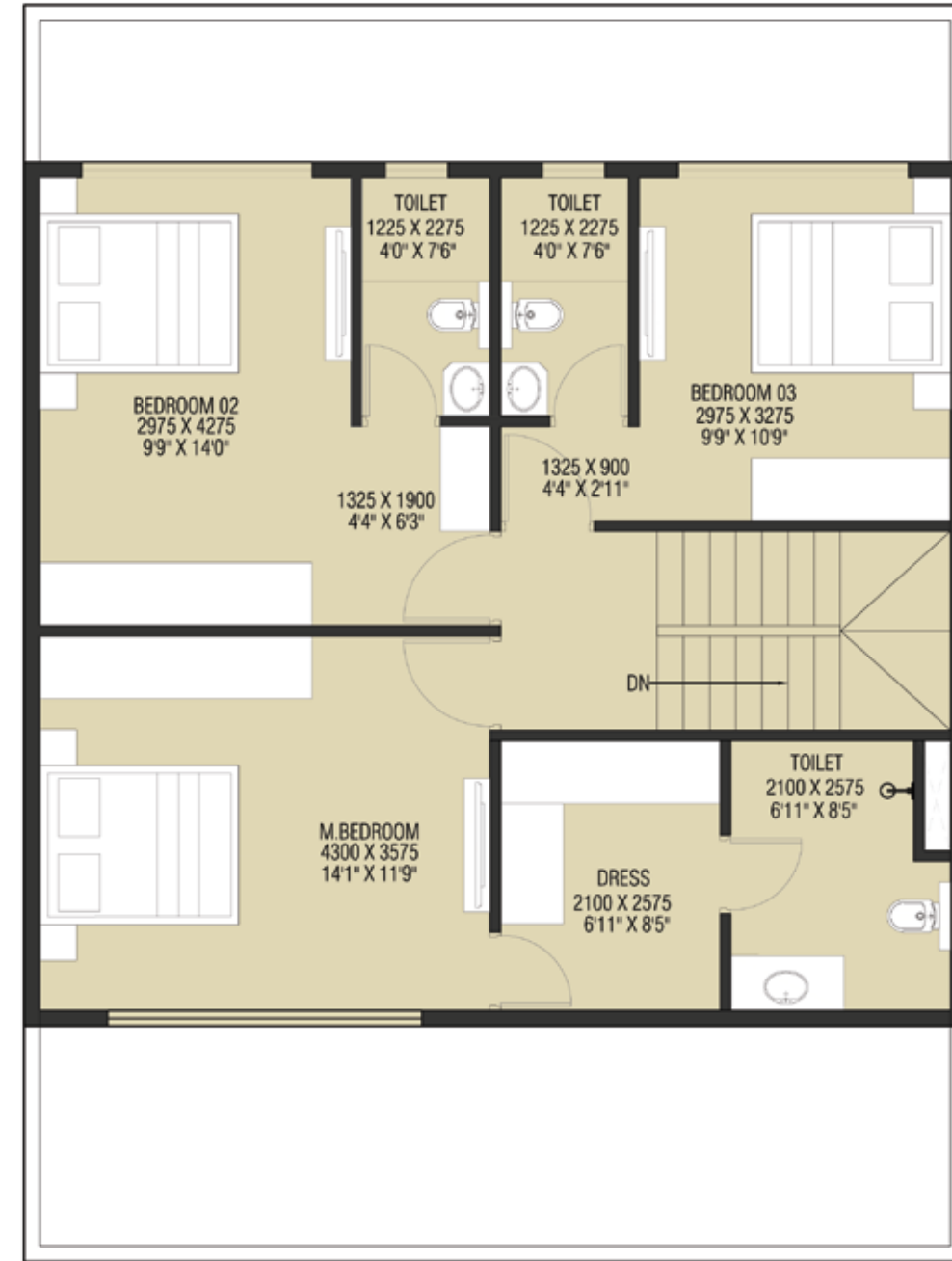
\*Prices are subject to change without any prior notice or intimation. Terms and Conditions Apply.





## GROUND FLOOR

Total Plot Area:	<b>1163 sq.ft</b>
Permissible Built-Up Area (@ 1.4 FSI):	<b>1627.51 sq.ft</b>
2.5 BHK Row House:	<b>1512 sq.ft</b>
Balance Built-up area:	<b>115.51 sq.ft</b>



## FIRST FLOOR

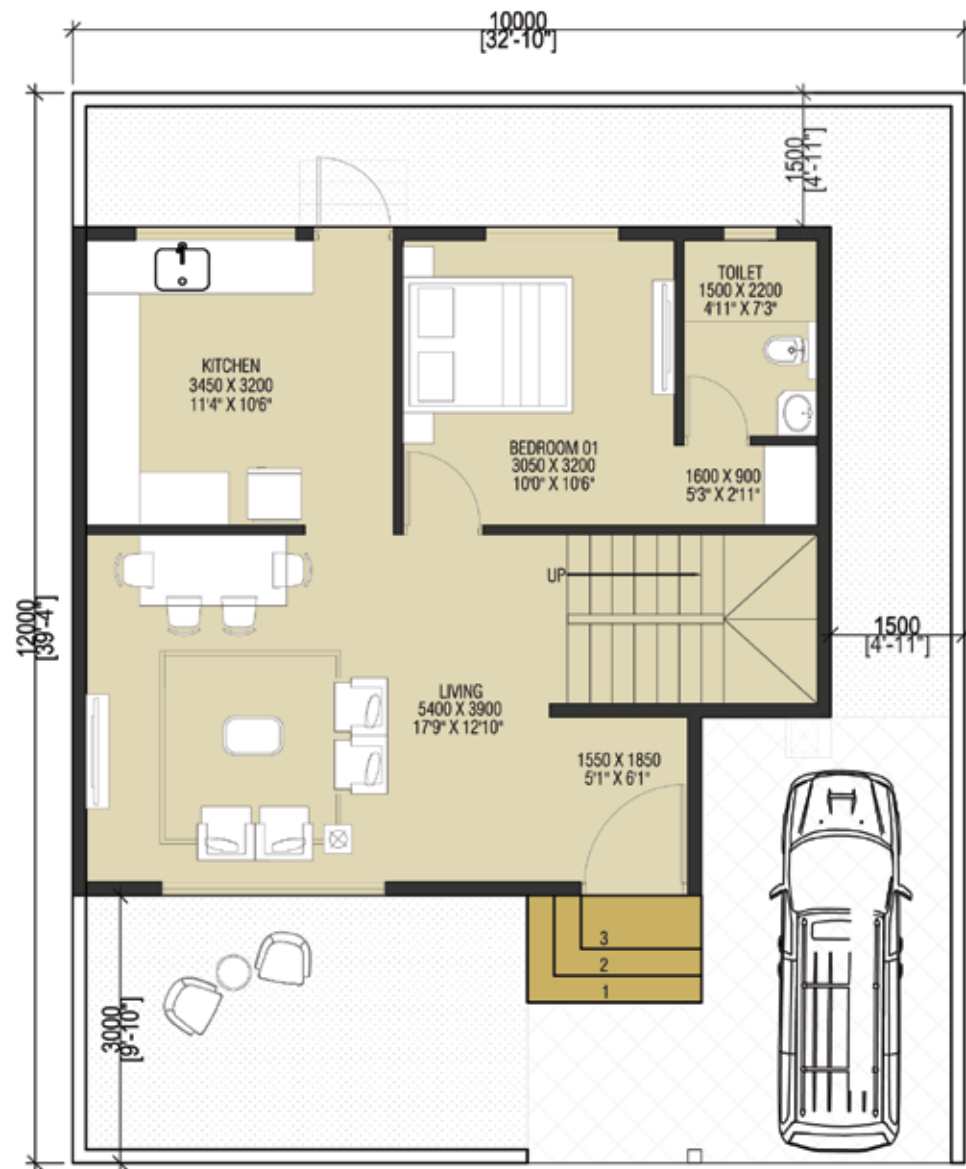
Peninsula AshokVann MahaRERA registration numbers: Phase 1: P52100046962 | Phase 2: P52100046842 | Phase 3: P52100046963 details available at <https://maharera.mahaonline.gov.in> under registered projects.

BeyondWalls MahaRERA number: A52100030372 details available at <https://maharera.mahaonline.gov.in>

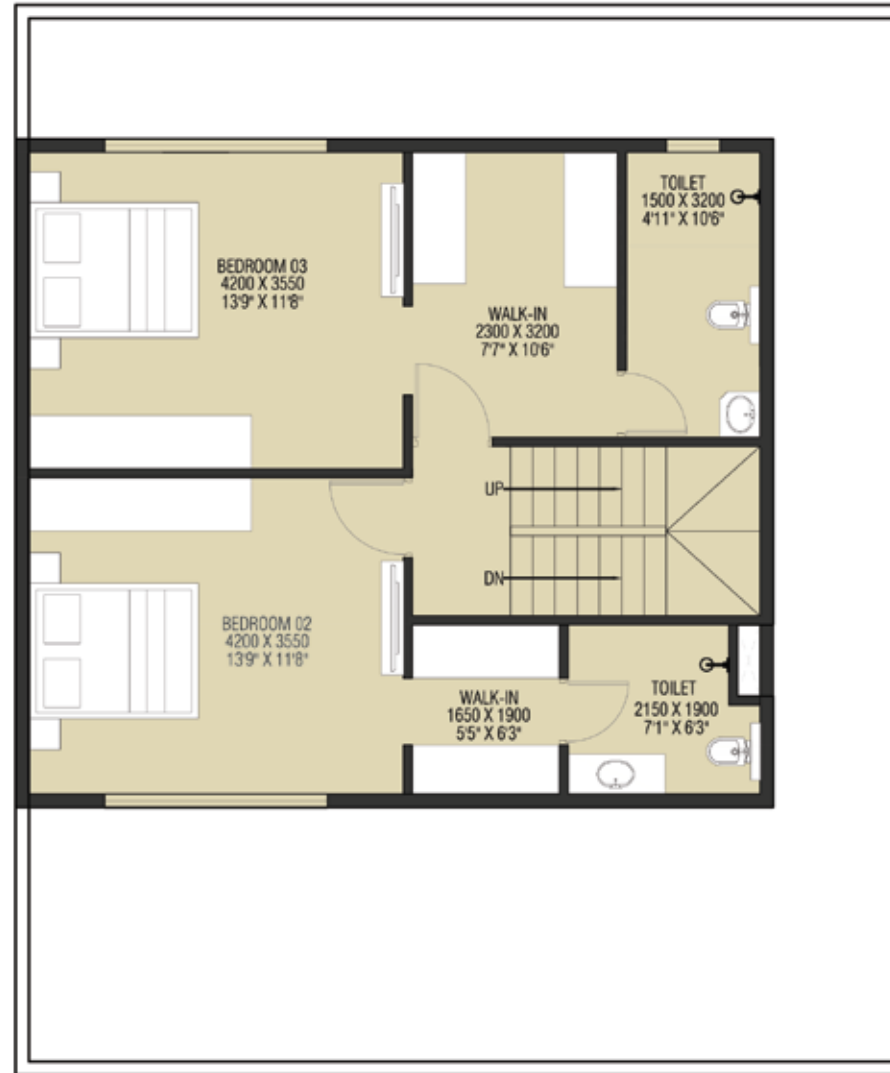
Please Note: This advertisement does not constitute an offer and/or acceptance under any statute of any nature whatsoever. The terms and conditions of sale shall be only as incorporated in booking form, cost sheet, allotment letter and Agreement for Sale. Prices are inclusive of Govt Taxes, Society Charges and Maintenance charges. \*Prices will vary basis selection of the inventory. \*Amenities mentioned in this brochure are subject to change without any prior notice or intimation. \*The images of the project are merely the artist's conception of the project. The models in the image used are only for representation purpose. We are offering for sale only NA Plots and the add-ons such as construction and fixtures shown in the marketing materials will not form part of any contract/offer unless specifically incorporated in the Agreement for Sale. Amenities mentioned are subject to approvals and availability. For details of amenities contact sales office. Clubhouse shall not be part of the project. The factual information present in this brochure is procured via general research through digital medium.

\*Prices are subject to change without any prior notice or intimation. Terms and Conditions Apply.

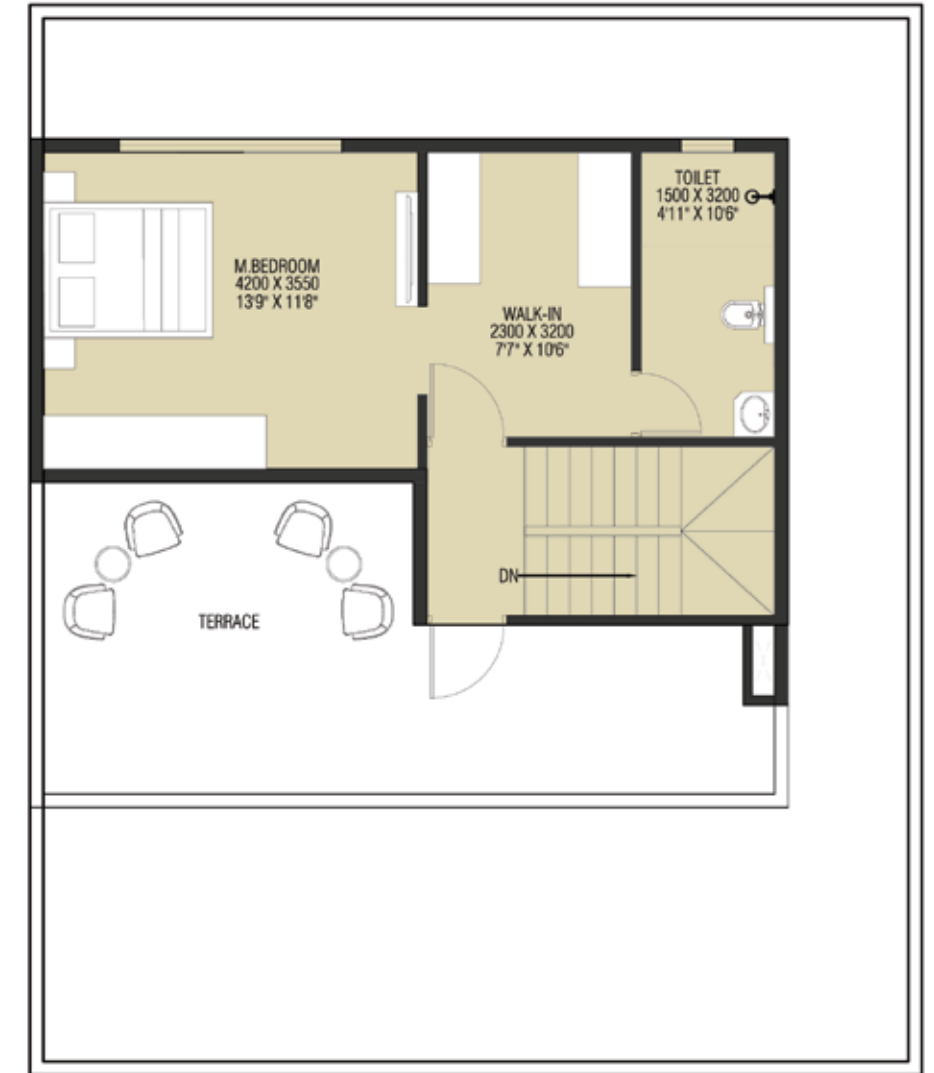




**GROUND FLOOR**



**FIRST FLOOR**



**SECOND FLOOR**

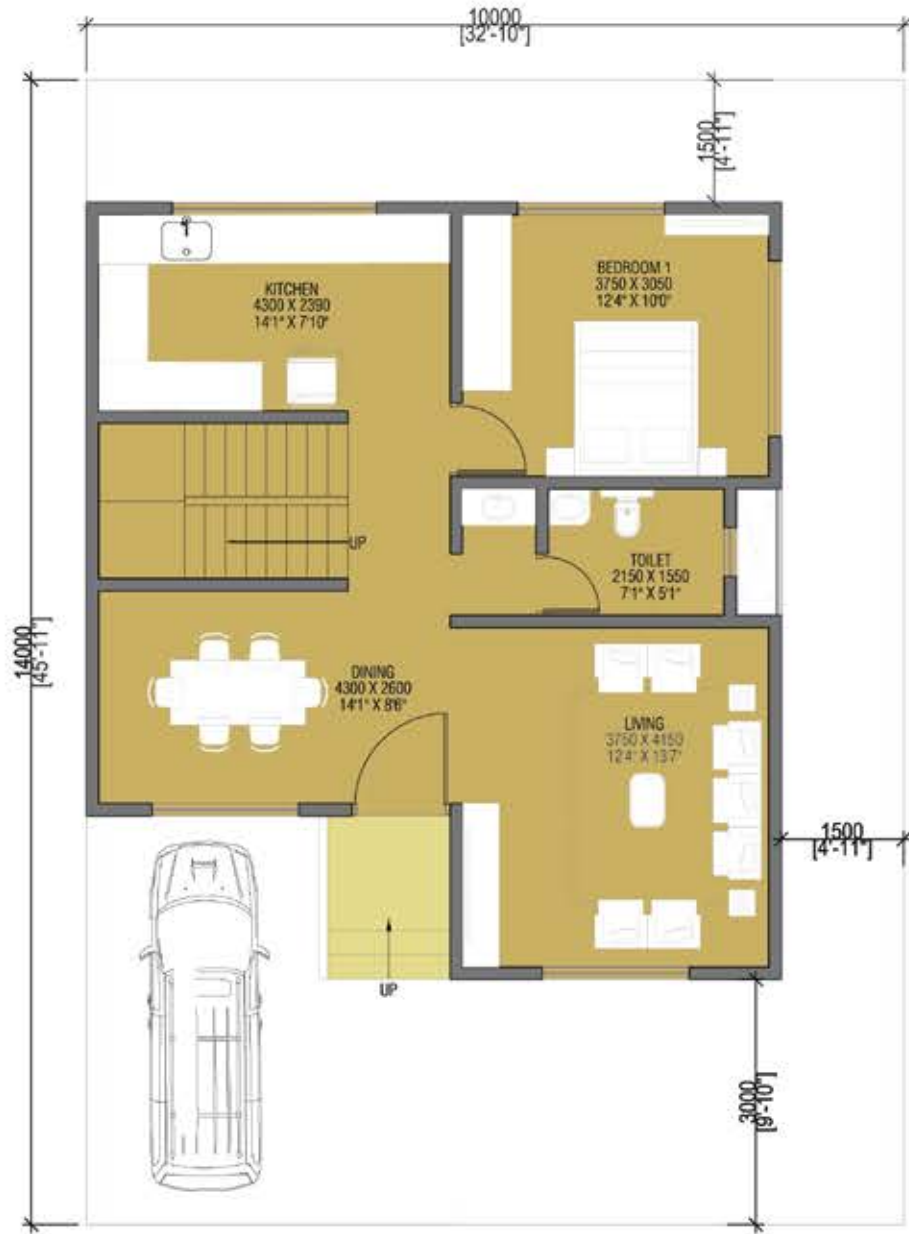
Total Plot Area: **1292 sq.ft**  
 Permissible Built-Up Area (@ 1.4 FSI): **1808 sq.ft**  
 2.5 BHK Row House: **1762 sq.ft**  
 Balance Built-up area: **46 sq.ft**

Peninsula AshokVann MahaRERA registration numbers: Phase 1: P52100046962 | Phase 2: P52100046842 | Phase 3: P52100046963 details available at <https://maharera.mahaonline.gov.in> under registered projects.

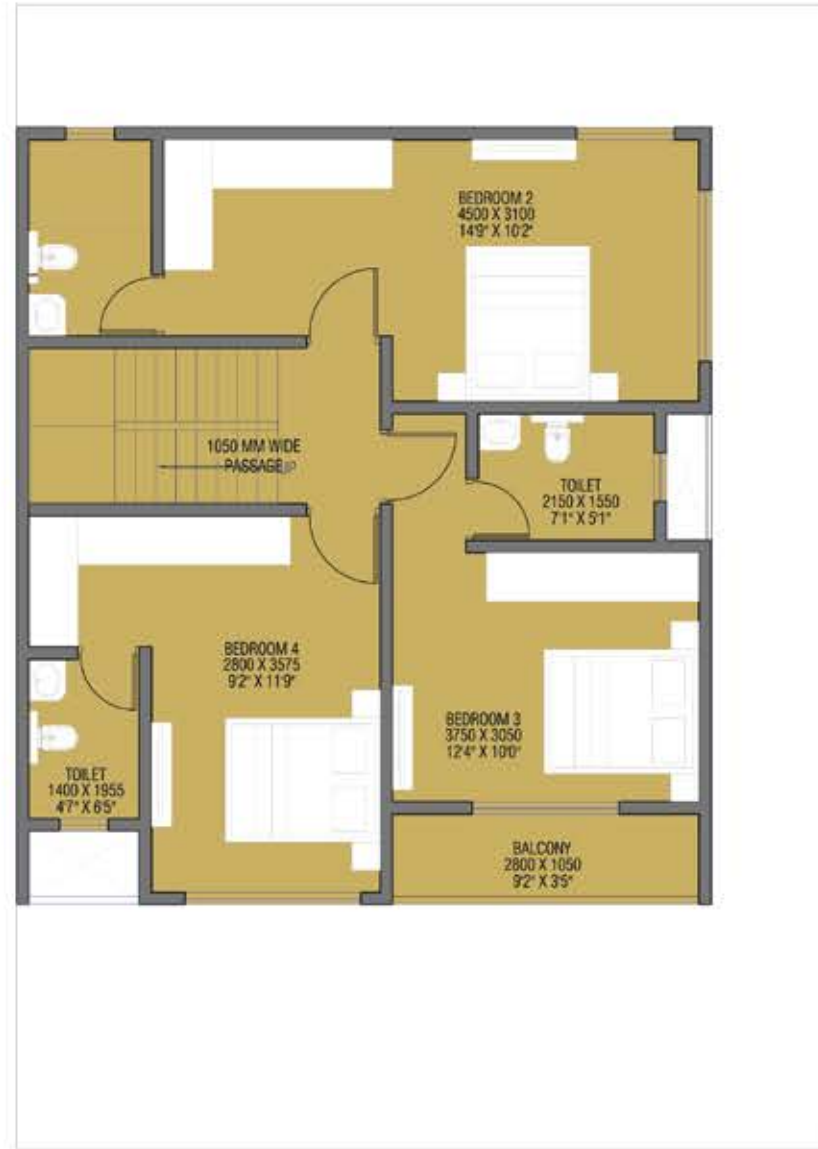
BeyondWalls MahaRERA number: A52100030372 details available at <https://maharera.mahaonline.gov.in>

Please Note: This advertisement does not constitute an offer and/or acceptance under any statute of any nature whatsoever. The terms and conditions of sale shall be only as incorporated in booking form, cost sheet, allotment letter and Agreement for Sale. Prices are inclusive of Govt Taxes, Society Charges and Maintenance charges. \*Prices will vary basis selection of the inventory. \*Amenities mentioned in this brochure are subject to change without any prior notice or intimation. \*The images of the project are merely the artist's conception of the project. The models in the image used are only for representation purpose. We are offering for sale only NA Plots and the add-ons such as construction and fixtures shown in the marketing materials will not form part of any contract/offer unless specifically incorporated in the Agreement for Sale. Amenities mentioned are subject to approvals and availability. For details of amenities contact sales office. Clubhouse shall not be part of the project. The factual information present in this brochure is procured via general research through digital medium.

\*Prices are subject to change without any prior notice or intimation. Terms and Conditions Apply.



**GROUND FLOOR**



**FIRST FLOOR**



**SECOND FLOOR**

Peninsula AshokVann MahaRERA registration numbers: Phase 1: P52100046962 | Phase 2: P52100046842 | Phase 3: P52100046963 details available at <https://maharera.mahaonline.gov.in> under registered projects.

BeyondWalls MahaRERA number: A52100030372 details available at <https://maharera.mahaonline.gov.in>

Please Note: This advertisement does not constitute an offer and/or acceptance under any statute of any nature whatsoever. The terms and conditions of sale shall be only as incorporated in booking form, cost sheet, allotment letter and Agreement for Sale. Prices are inclusive of Govt Taxes, Society Charges and Maintenance charges. \*Prices will vary basis selection of the inventory. \*Amenities mentioned in this brochure are subject to change without any prior notice or intimation. \*The images of the project are merely the artist's conception of the project. The models in the image used are only for representation purpose. We are offering for sale only NA Plots and the add-ons such as construction and fixtures shown in the marketing materials will not form part of any contract/offer unless specifically incorporated in the Agreement for Sale. Amenities mentioned are subject to approvals and availability. For details of amenities contact sales office. Clubhouse shall not be part of the project. The factual information present in this brochure is procured via general research through digital medium.

\*Prices are subject to change without any prior notice or intimation. Terms and Conditions Apply.