



**SOORYA**  
**SPLENDOR**  
 ultimate peacefulness

quality | luxury | exclusivity



Builders & Developers

**SOORYA HOMES**

Enriching Your Lifestyle

# 407, 9th Main, HRBR 1st Block, Kalyan Nagar, Bangalore - 43. Cell: 9019 88 55 99, 8088 88 77 99  
 email: sooryashine@yahoo.com, website: sooryahomes.in

Consultants

**SIDDHARTH CONSULTANTS**

G-1, 9/3RT, S.R.NAGAR, Hyd-38. Ph: 040-23715599, 23715544.  
 siddhu\_cons@yahoo.co.in

Approved by



NOTE: This brochure is only a conceptual presentation of the project and not a legal offering. The promoters reserve the right to make changes in the elevation, plans and specifications as deemed fit.

Aeriforce +91 9885253570

A project by  
**SOORYA HOMES**  
 Enriching Your Lifestyle







TYPICAL FLOOR PLAN IN 3D VIEW



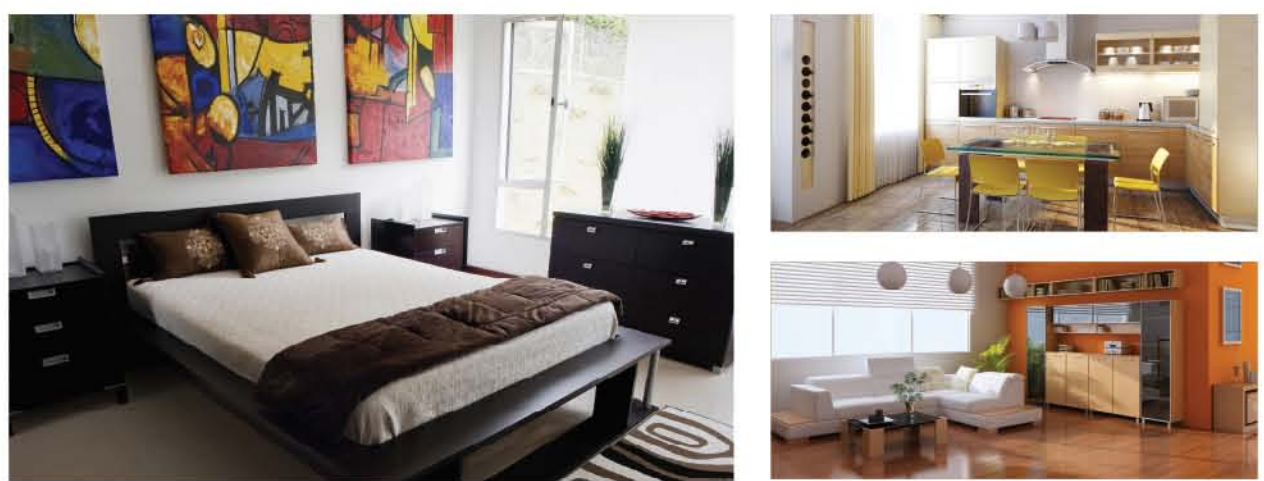
**SOORYA**  
**SPLENDOR**  
ultimate peacefulness

TYPICAL FLOOR PLAN



Flat No.	1	2	3	4	5	6	7
BHK	2 BHK	3 BHK	3 BHK	3 BHK	2 BHK	2 BHK	2 BHK
Areas in Sft.	1280	1530	1530	1750	1170	1170	1280

The apartments are designed to provide maximum living space to suit your needs and ensure a healthy environment. Designer balconies and large windows are designed for letting in plenty of natural light and fresh air for cross ventilation. The common areas are spacious for easy movement. Amenities like landscaping, multi purpose hall, gymnasium, children's play area and greenery all round are standard. Soorya Homes are making all efforts to see that every moment you spend in Soorya Splendor is a happy one.







### AMENITIES IN PARKING

- TABLE TENNIS
- LIFT
- CHILDREN'S PLAY AREA
- SECURITY
- GENERATOR
- INTERCOM

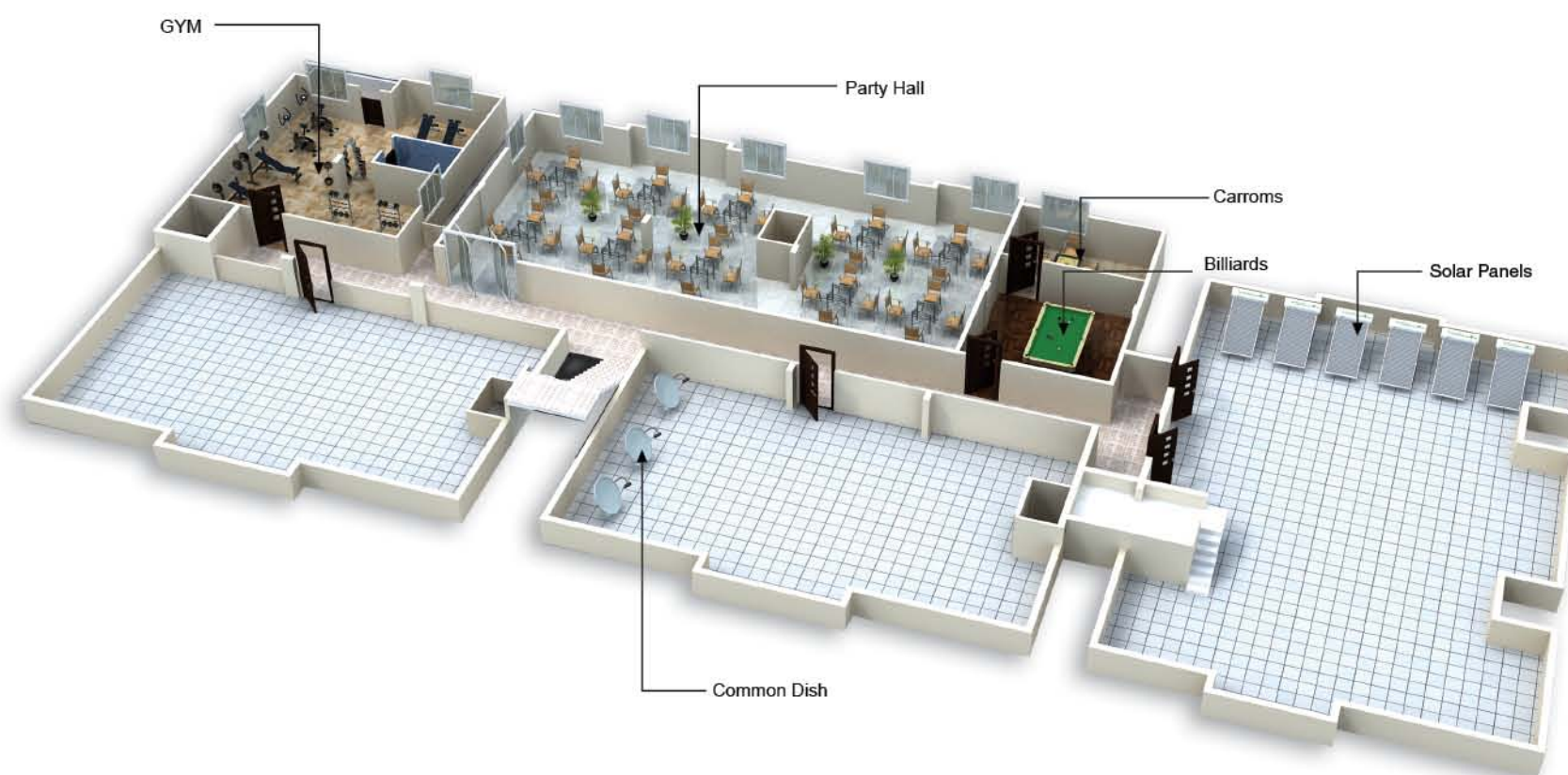
PARKING PLAN IN 3D VIEW



### AMENITIES IN TERRACE

- GYM
- CARROMS & BILLIARDS
- COMMON DISH FOR THE SITI CABLE PROGRAMS
- Wi-Fi
- SOLAR WATER SUPPLY PANELS
- PARTY HALL

TERRACE FLOOR PLAN IN 3D VIEW



### SPECIFICATIONS

	<b>STRUCTURE</b>	: Rcc framed structure.
	<b>SUPER STRUCTURE</b>	: Solid brick masonry, plastering with smooth finishing cm 1:5.
	<b>MAIN DOOR</b>	: Teak wood polish frame with OST shutter with brass fittings.
	<b>INTERNAL DOORS</b>	: Sal wood frames with ready made shutters and enamel paintings.
	<b>WINDOWS</b>	: Aluminium powder coated with safety MS grills.
	<b>FLOORING</b>	: Vitrified flooring.
	<b>KITCHEN</b>	: 40mm Granite black / brown top, glazed tiles dadoing upto 2' height, SS sink, 12"x12" anti skid floor tiling.
	<b>TOILETS</b>	: Glass finish wall tiles upto lintel height & anti skid floor tiles of ISI make.
	<b>CP &amp; SANITARY FITTINGS</b>	: Hindware / Parryware or equivalent make ISI fittings.
	<b>ELECTRICAL</b>	: Concealed copper wiring with modular switches for all adequate points exhaust fan points for kitchen & toilets.
	<b>WATER SUPPLY</b>	: EPVC & PVC pipes of Supreme / Ashirvad pipes.
	<b>PAINTING</b>	: Asian emulsion paints with atek luppam for the interiors. Apex weather proof paints for exteriors. Asian enamel paints for the internal doors.

You are in good company with elite brands



**SOORYA**  
**SPLENDOR**  
ultimate peacefulness