

TOWER O



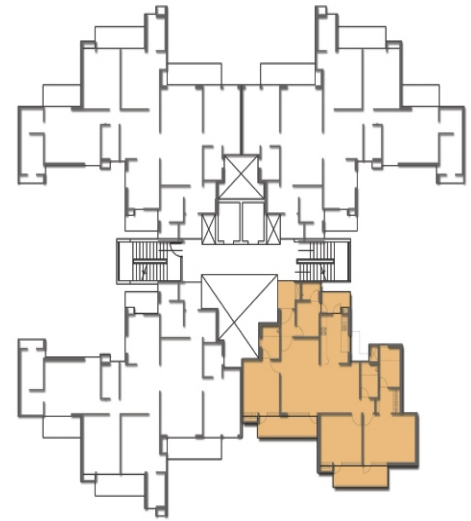
SALEABLE AREA = 506 Sq. Ft.

PROJECT
 "GOLDEN PALM" GROUP HOUSING AT SECTOR 168, NOIDA



GIAN P. MATHUR & ASSOCIATE (P) LTD.
 ARCHITECTS, ENGINEERS AND PLANNER

DISCLAIMER : PLANS ARE TENTATIVE AND SUBJECT TO CHANGE (NOT A LEGAL OFFERING)



TOWER A
TOWER B

SALEABLE AREA = 1914 Sq. Ft.

PROJECT
"GOLDEN PALM" GROUP HOUSING AT SECTOR 168, NOIDA

3 BED + 4 TOI + STUDY



GIAN P. MATHUR & ASSOCIATE (P) LTD.
ARCHITECTS, ENGINEERS AND PLANNER

DISCLAIMER : PLANS ARE TENTATIVE AND SUBJECT TO CHANGE (NOT A LEGAL OFFERING)



TOWER C
TOWER D
TOWER L
TOWER M
TOWER N

SALEABLE AREA = 1914 Sq. Ft.

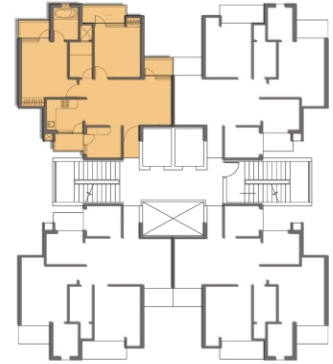
PROJECT
"GOLDEN PALM" GROUP HOUSING AT SECTOR 168, NOIDA

3 BED + 4 TOI + STUDY



GIAN P. MATHUR & ASSOCIATE (P) LTD.
ARCHITECTS, ENGINEERS AND PLANNER

DISCLAIMER : PLANS ARE TENTATIVE AND SUBJECT TO CHANGE (NOT A LEGAL OFFERING)



TOWER E
 TOWER F
 TOWER G
 TOWER H
 TOWER J
 TOWER K

SALEABLE AREA = 1085 Sq. Ft.



▲
ENTRY



TOWER C
TOWER D
TOWER L
TOWER M
TOWER N

SALEABLE AREA = 1554 Sq. Ft.



TOWER A
TOWER B



SALEABLE AREA = 2473 Sq. Ft.

PROJECT
"GOLDEN PALM" GROUP HOUSING AT SECTOR 168, NOIDA
4 BHK + 5 TOI + SRVNT. RM.
CPM GIAN P. MATHUR & ASSOCIATE (P) LTD.
ARCHITECTS, ENGINEERS AND PLANNER

DISCLAIMER : PLANS ARE TENTATIVE AND SUBJECT TO CHANGE (NOT A LEGAL OFFERING)