

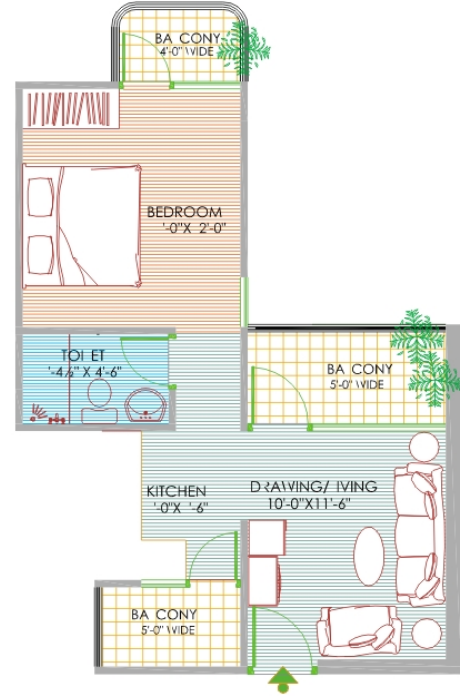
WORLD CITY

LIFESTYLE APARTMENTS

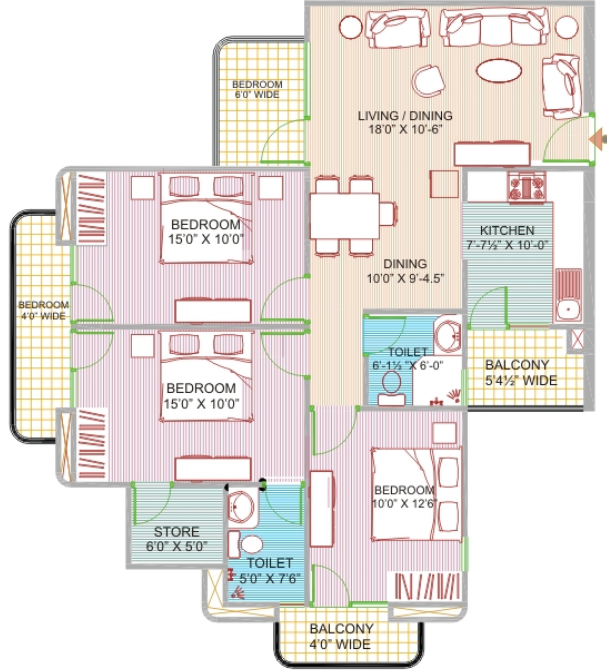
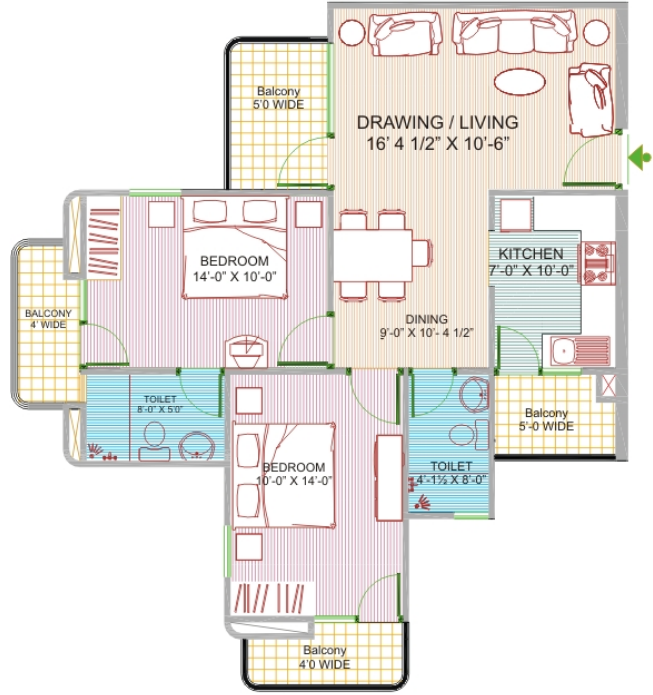


SALIENT FEATURES

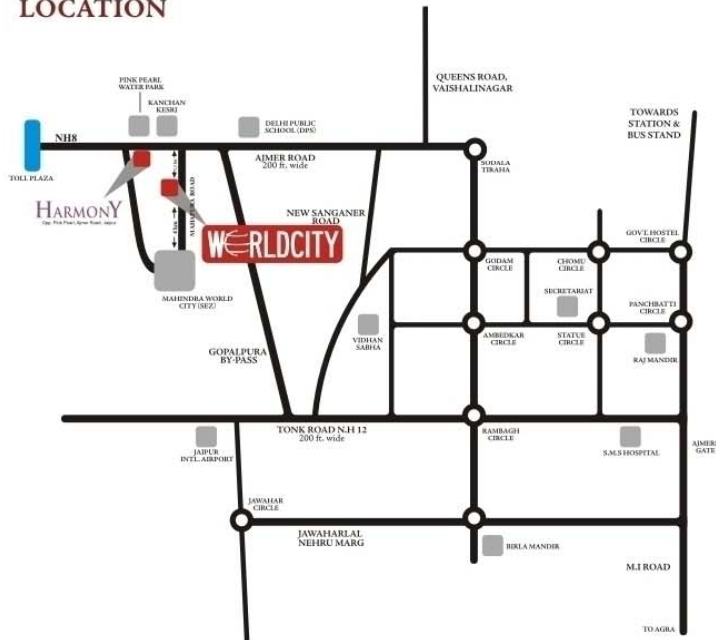
- Wi-Fi connectivity
- Solar system for common lights
- Common Satellite (Dish) TV
- Water Recycle System
- Security Office
- Jogging Park
- Beauty Saloon
- Day Care Center
- Badminton Court
- Tennis Court, Basket Ball Court, Skating Rink,
- Swimming Pool with Toddlers' Pool
- TT Table, Billiard/ Pool Table
- Party Lawn
- Gym
- Community Hall
- Essential Shoppie
- Jogging Track
- Gravelled Path
- Card Room / Yoga Room
- Basement Car Parking
- Lawn with Slides etc
- EPABX System
- Provision for Invertors, etc.



1 BHK UNIT | AREA 639.65 SQ. FT.



LOCATION



Site Address: NH8, Jaipur Aimer Expressway, Jaipur

UDB
UNIQUE DREAM BUILDERS
 Expect More

Corp. Office: C 116, Janpath
 Near Vidhan Sabha, Jaipur 302 015
 Ph: +91 141 4077000 Fax: +91 141 2740902
 Ph: +91 99293 62000, 63000
 Email: info@uniquedreambuilders.com
 Website: www.uniquedreambuilders.com
 sms UNIQUE to 56969

LEGAL NOTE: The information contained herein cannot form part of any offer or contract. While every reasonable care has been taken in providing this information, the owner or their agents cannot be held responsible for any inaccuracies. Illustrations shown in the brochure are artist's impressions and serve only to give an approximate idea of the project. All impressions and plans are subject to amendments as may be required for the betterment of the project allowed within the laws.