

Why pay rent when you can pay EMI?  
 Why wait when you can get ready possession?



Perfect reasons for you to move in to your own apartment at Mantri Park.

Sunil Mantri Realty Ltd. is a developer of residential and commercial spaces for people across India, which has earned it a formidable reputation amongst its customers. The company's exemplary vision, technical expertise and project management skills are attested by over 15,000 happy customers, occupying 140 projects, spanning 15 million sq. ft. of development and 650 completed structures. Led by its technocrat chairman, Mr. Sunil Mantri, the company's core belief lies in its profound commitment to provide innovative design, investment value and matchless quality.

**SUNILMANTRI REALTY LTD.**

**SITE ADDRESS:** Mantri Park, Next to N. N. P. Sec. 1 & 2, Opp. New Mhada Bungalows, Off. Film City Road, Dindoshi, Goregaon (E), Mumbai 400 065. | Board Number: 022-6156 5000  
**CORPORATE OFFICE:** Sunil Mantri Realty Ltd., GA-1, Court Chambers, 35, New Marine Lines, Mumbai 400 020. | Board Number: 022-6156 0500  
 Email: mumbaisales@mantrirealty.com | Website: www.mantrirealty.com | SMS 'MANTRI' to 54242

Ready to move-in homes at Mantri Park, Goregaon.

**MANTRI**  
**PARK**  
 Goregaon, East

**Imagine coming home to one of the best views of the city.**

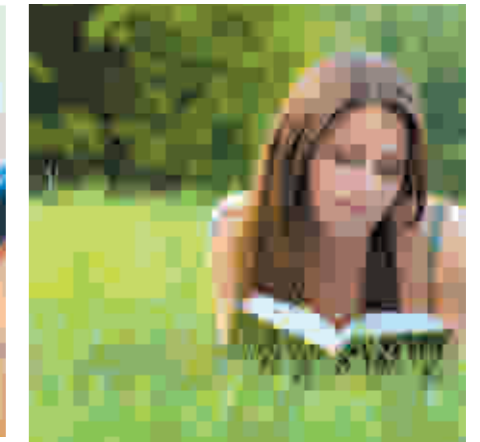
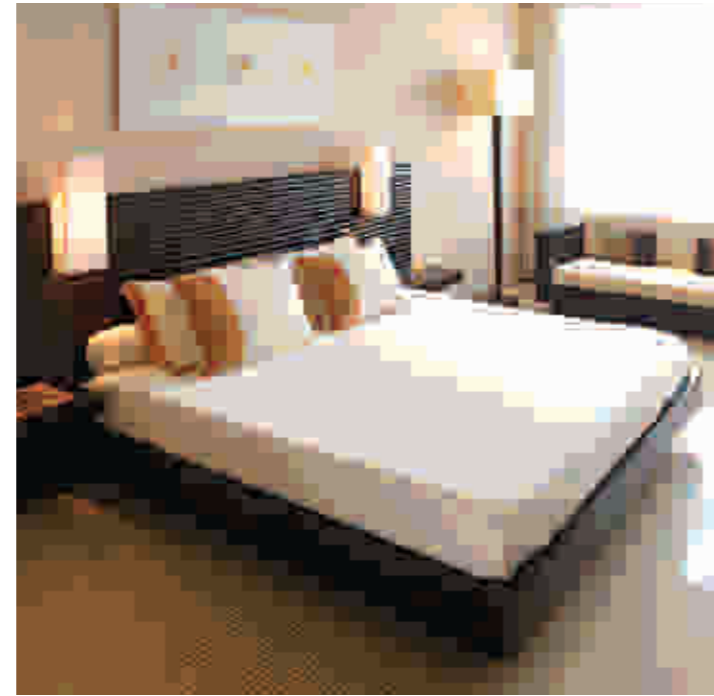
Come home to Mantri Park. Come home to a place that is cut off from all the chaos and the hustle-bustle of the city. Overlooking the mountains, and accessible from various corners of Mumbai, Mantri Park is nestled amidst vast green stretches. Aesthetically designed and equipped with all modern amenities, these ready to move in apartments are an ideal place for comfort and convenience.

**Internal Amenities**

- Elegant marble flooring in hall and passage
- Anodised aluminium windows
- Granite kitchen platform
- Stainless steel sink
- Concealed copper wiring with modular switches
- Concealed plumbing with high quality fittings
- POP cornice in living room
- Video door phone and Intercom
- Door height tiles in bathroom

**External Amenities**

- High speed lift
  - Landscaped garden
  - Children's play area with equipments
  - Swimming pool\*
  - Health club\*
  - Open badminton court
- \* Subject to BMC approval

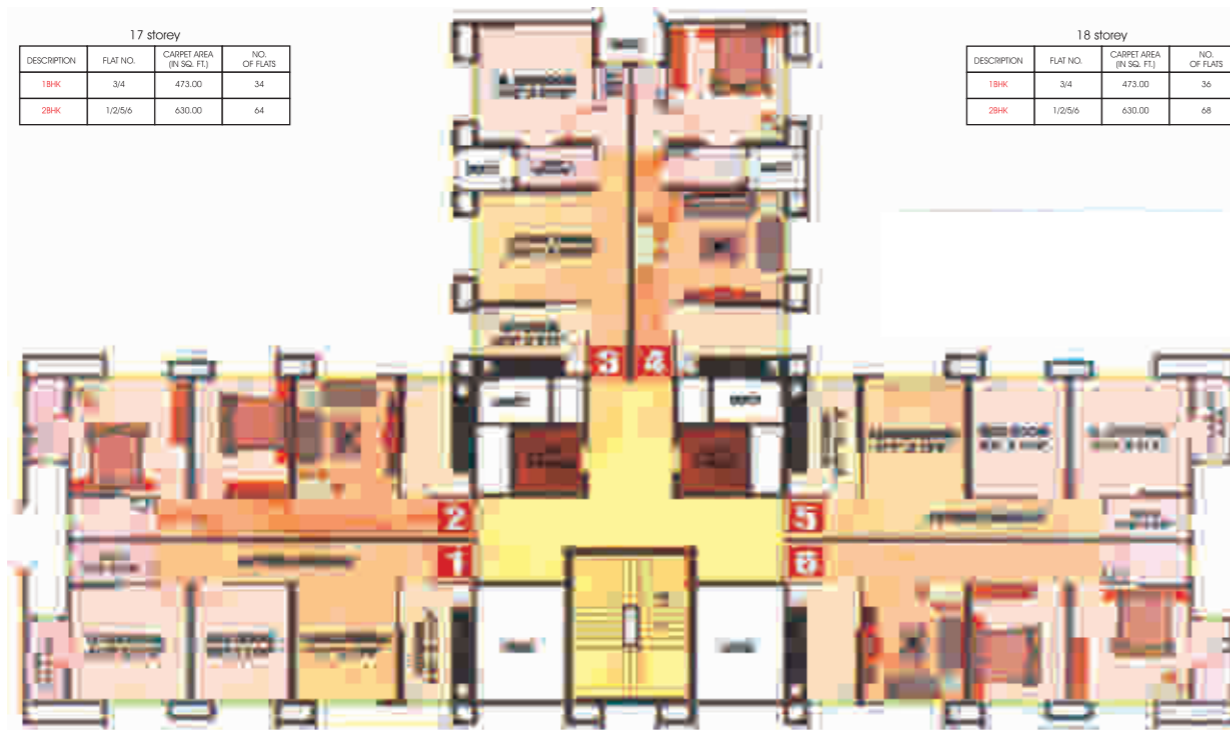


**Your personal abode in the lap of nature.**

Situated amid nature's bounty, Mantri Park is a residential complex that packs in just the right amount of recreation you would need around your home. With an unrestricted view of the hills, the seasonal waterfalls and the amenities around your home, it's the perfect place to come back home to.

**LAVENDER -**

17 storey			
DESCRIPTION	FLAT NO.	CARPET AREA (IN SQ. FT.)	NO. OF FLATS
1BHK	3/4	473.00	34
2BHK	1/2/5/6	630.00	64



**LUPIN -**

18 storey			
DESCRIPTION	FLAT NO.	CARPET AREA (IN SQ. FT.)	NO. OF FLATS
1BHK	3/4	473.00	34
2BHK	1/2/5/6	630.00	64

**LILY -**

17 storey			
DESCRIPTION	FLAT NO.	CARPET AREA (IN SQ. FT.)	NO. OF FLATS
1BHK	3/4	473.00	34
2BHK	1/2/5/6	630.00	64



**ORCHID -**

18 storey			
DESCRIPTION	FLAT NO.	CARPET AREA (IN SQ. FT.)	NO. OF FLATS
1BHK	3/4	473.00	34
2BHK	1/2/5/6	630.00	64

TYPICAL FLOOR PLAN

ARCHITECT  
HAFEEZ CONTRACTOR

TYPICAL FLOOR PLAN

ARCHITECT  
HAFEEZ CONTRACTOR