



M&M
GOLF HILLS



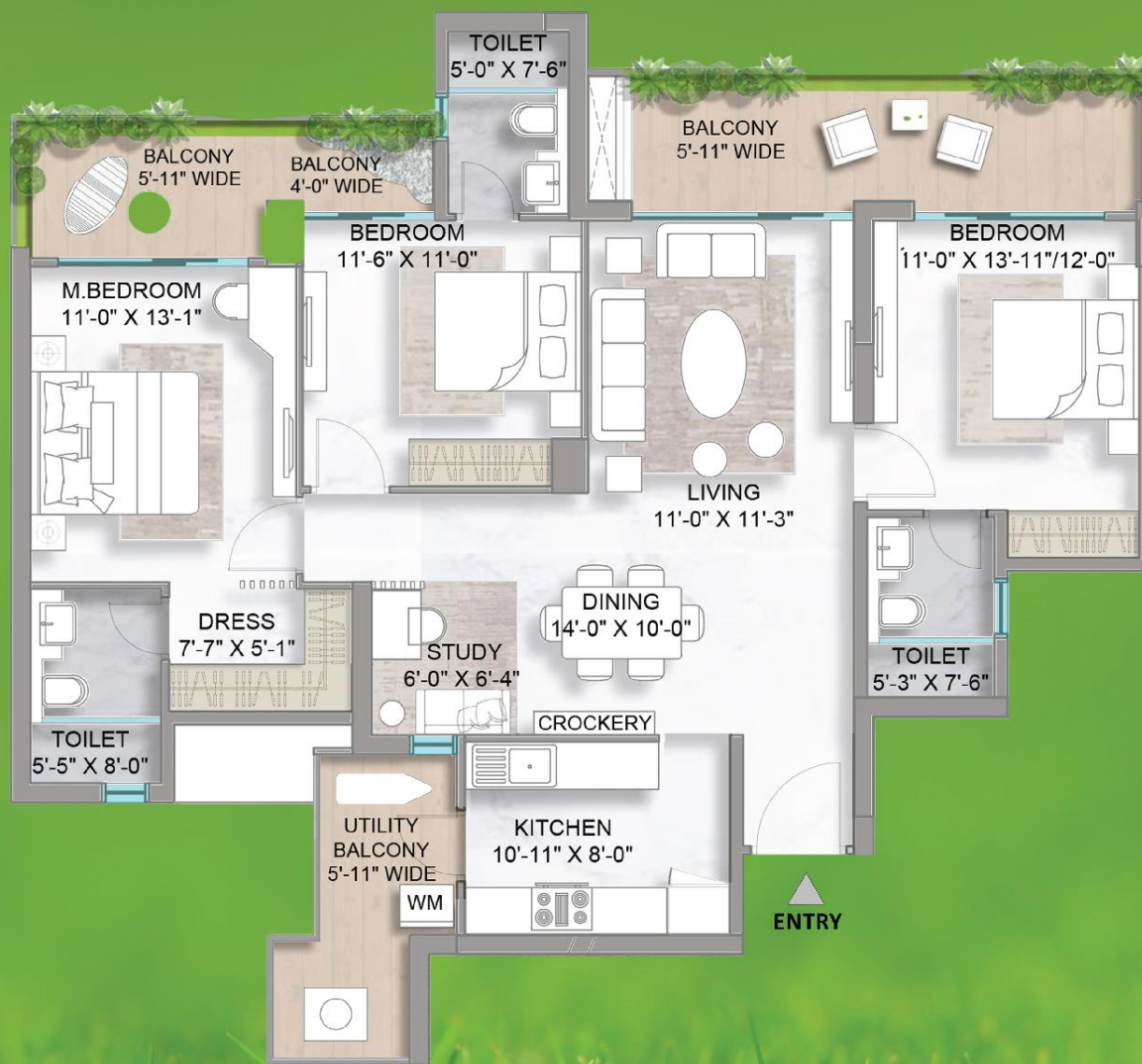
MASTER PLAN



UNIT PLAN - 2.5 BHK

2 BEDROOMS + 0.5 BHK - STUDY/BAR/DEN

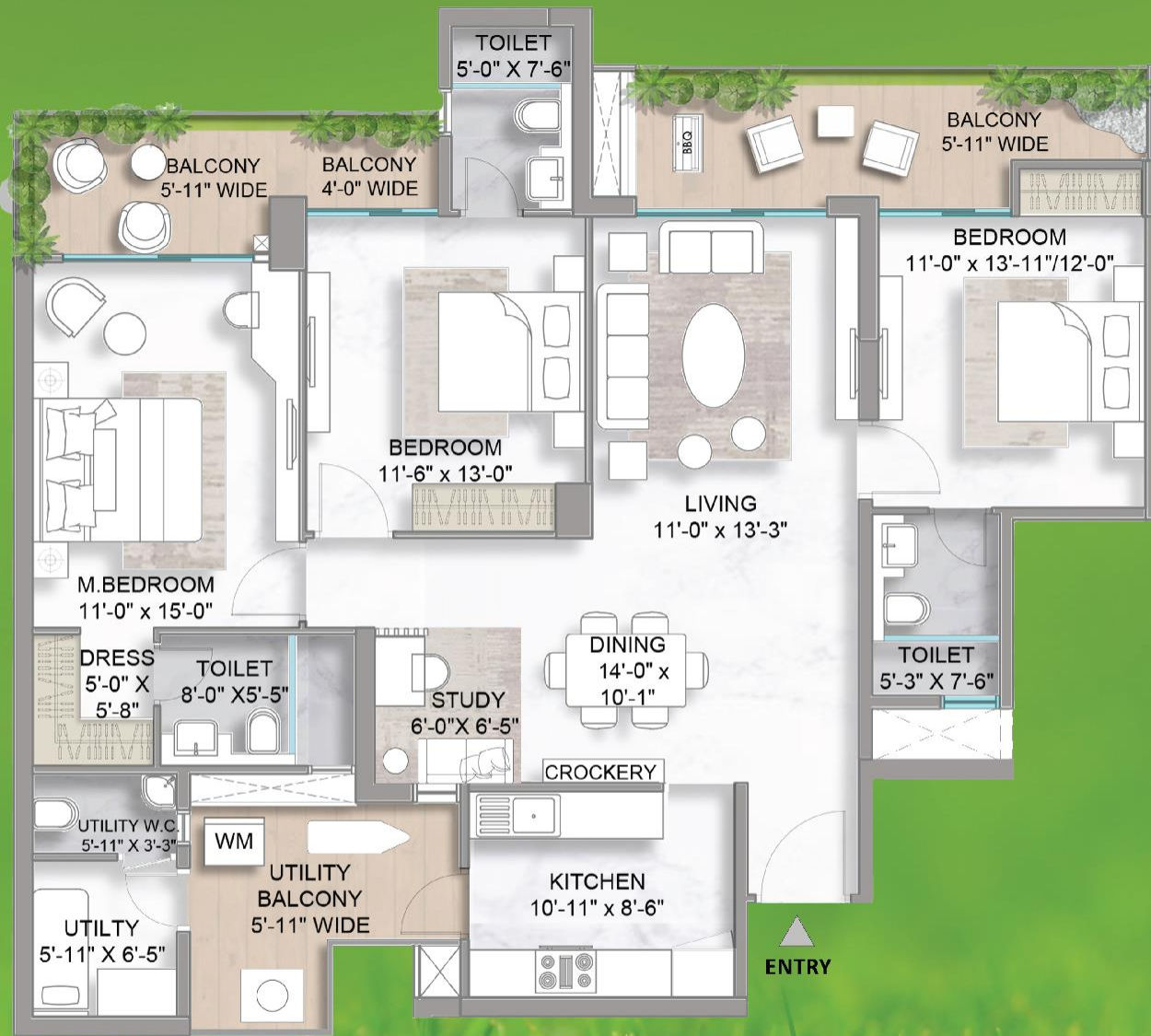
SIZE - 1420 sq.ft.



UNIT PLAN - 3.5 BHK

3 BEDROOMS + 0.5 BHK - STUDY/BAR/DEN

1902 SQ.FT. (APPROX)



UNIT PLAN - 3.5 BHK + SERVANT

3 BEDROOMS + 0.5 BHK - STUDY/BAR/DEN + SERVANT

2090 SQ.FT. (APPROX)



UNIT PLAN - 4.5 BHK

4 BEDROOMS + 0.5 BHK - STUDY/BAR/DEN

2630 SQ.FT. (APPROX)

SPECIFICATIONS

Sr. No.	AREA	FLOORING	CEILING	WALL	INTERNAL DOORS	EXTERNAL DOOR / WINDOWS / RAILINGS	LIGHT FIXTURES	AC	PLUMBING FIXTURES	Others
1	Living room, Dining	International Stone Finish Tile	Combination of POP False Ceiling/ Boxing and Punning/ Putty with Acrylic Emulsion Paint	Punning/ Putty with Acrylic Emulsion Paint	Veneered Polished Door Shutter	Power Coated/ Anodised Aluminium Door & Windows	-	Branded Ductable Air Conditioning System	-	Biometric lock
2	Kitchen	International Stone Finish Tile	Combination of POP False Ceiling/ Boxing and Punning/ Putty with Acrylic Emulsion Paint	Combination of International Stone Finish Tile and Punning/ Putty with Acrylic Emulsion Paint	-	Power Coated/ Anodised Aluminium Door & Windows	-	-	SS sink with Branded CP Fittings	Branded Modular Kitchen With Hob ,Chimney
3	Master bedrooms	Laminated Wooden Flooring	Combination of POP False Ceiling/ Boxing and Punning/ Putty with Acrylic Emulsion Paint	Punning/ Putty with Acrylic Emulsion Paint	Modular Skin Door	Power Coated/ Anodised Aluminium Door & Windows	-	VRV/ VRF Hi Wall	-	-
4	Master Toilet	International Stone Finish Tile	MR Board With Acrylic Emulsion paint/ Grid Ceiling	International Stone Finish Tile	Modular Skin Door	Power Coated/ Anodised Aluminium Door & Windows	Branded Ceiling Lights/ Mirror Lights.	-	Branded CP Fittings & Chinaware	-
5	All other bedrooms	Laminated Wooden Flooring	Combination of POP False Ceiling/ Boxing and Punning/ Putty with Acrylic Emulsion Paint	Punning/ Putty with Acrylic Emulsion Paint	Modular Skin Door	Power Coated/ Anodised Aluminium Door & Windows	-	VRV/ VRF Hi Wall	-	-
6	All other toilets	International Stone Finish Tile	MR Board With Acrylic Emulsion paint/ Grid Ceiling	International Stone Finish Tile	Modular Skin Door	Power Coated/ Anodised Aluminium Door & Windows	Branded Ceiling Lights/ Mirror Lights.	-	Branded CP Fittings & Chinaware	-
7	Staff bedroom	International Stone Finish Tile	Punning/ Putty with OBD	Punning/ Putty with OBD	Modular Skin Door	Power Coated/ Anodised Aluminium Door & Windows	-	-	-	-
8	Staff toilet	International Stone Finish Tile	MR Board With Acrylic Emulsion paint/ Grid Ceiling	Combination of International Stone Finish Tile and Punning/ Putty with OBD	Modular Skin Door	Power Coated/ Anodised Aluminium Door & Windows	Branded Ceiling/ Wall lights	-	Branded CP Fittings & Chinaware	-
9	Balcony	International Stone Finish/ Plank Style Tiles	Durable Exterior Grade Paint	Durable Exterior Grade Pain	-	Seamless Glass Railing	Branded Ceiling/ Wall lights	-	Water Tap Point with drainage system	-



A lush green golf course with a pond in the foreground and trees in the background. The scene is captured from an elevated perspective, showing a well-maintained green with subtle undulations. In the foreground, a calm pond reflects the surrounding greenery. The background is filled with dense, mature trees, creating a sense of a secluded and natural environment. The overall atmosphere is serene and peaceful.

A LIFE OF INDULGENCE AWAITS YOU...