



God created Spain in inspired leisure.

At Ideal Villas, we have attempted to replicate a similar standard into our differentiated lifestyle destination.

Through hand-picked partners with a proven expertise.

Through a detailed design of the landscaping and villa

interiors. To create not just a property of an international

construction standard, but also a lifestyle that is truly

reminiscent of idyllic Spain.



IDEÁL VILLÁS



■ VILLA MIRANDA
 ■ VILLA LEON
 ■ VILLA PEDRO

Sl.No.	Land area (in cottahs)	Sl.No.	Land area (in cottahs)	Sl.No.	Land area (in cottahs)
01	4.121	43	3.532	85	3.532
02	4.121	44	2.775	86	2.775
03	4.121	45	2.775	87	5.199
04	4.121	46	5.126	88	4.242
05	3.532	47	5.638	89	2.775
06	2.775	48	2.775	90	3.532
07	2.775	49	2.775	91	3.532
08	3.532	50	3.532	92	2.775
09	4.121	51	3.532	93	4.687
10	5.176	52	2.775	94	4.482
11	3.907	53	2.775	95	2.775
12	2.775	54	3.532	96	2.775
13	2.775	55	3.532	97	3.532
14	3.532	56	2.775	98	3.532
15	3.532	57	2.775	99	2.775
16	2.775	58	3.532	100	3.532
17	2.775	59	3.532	101	3.532
18	3.532	60	2.775	102	2.775
19	3.532	61	2.775	103	2.775
20	2.775	62	3.997	104	4.625
21	2.775	63	5.322	105	4.625
22	3.532	64	4.121	106	2.775
23	3.532	65	3.532	107	2.775
24	2.775	66	2.775	108	5.096
25	2.775	67	2.775	109	3.997
26	2.775	68	3.532	110	2.775
27	3.532	69	4.690	111	2.775
28	3.532	70	2.775	112	3.532
29	2.775	71	2.775	113	3.532
30	2.775	72	4.625	114	2.775
31	5.696	73	4.625	115	2.775
32	6.006	74	2.775	116	3.532
33	2.775	75	2.775	117	3.532
34	3.532	76	3.532	118	2.775
35	3.532	77	3.532	119	2.775
36	2.775	78	2.775	120	3.532
37	2.775	79	2.775	121	3.532
38	3.532	80	2.775	122	2.775
39	3.532	81	4.084	123	2.775
40	2.775	82	3.804	124	2.775
41	2.775	83	2.775	125	3.842
42	3.737	84	3.532		



VILLA MIRANDA

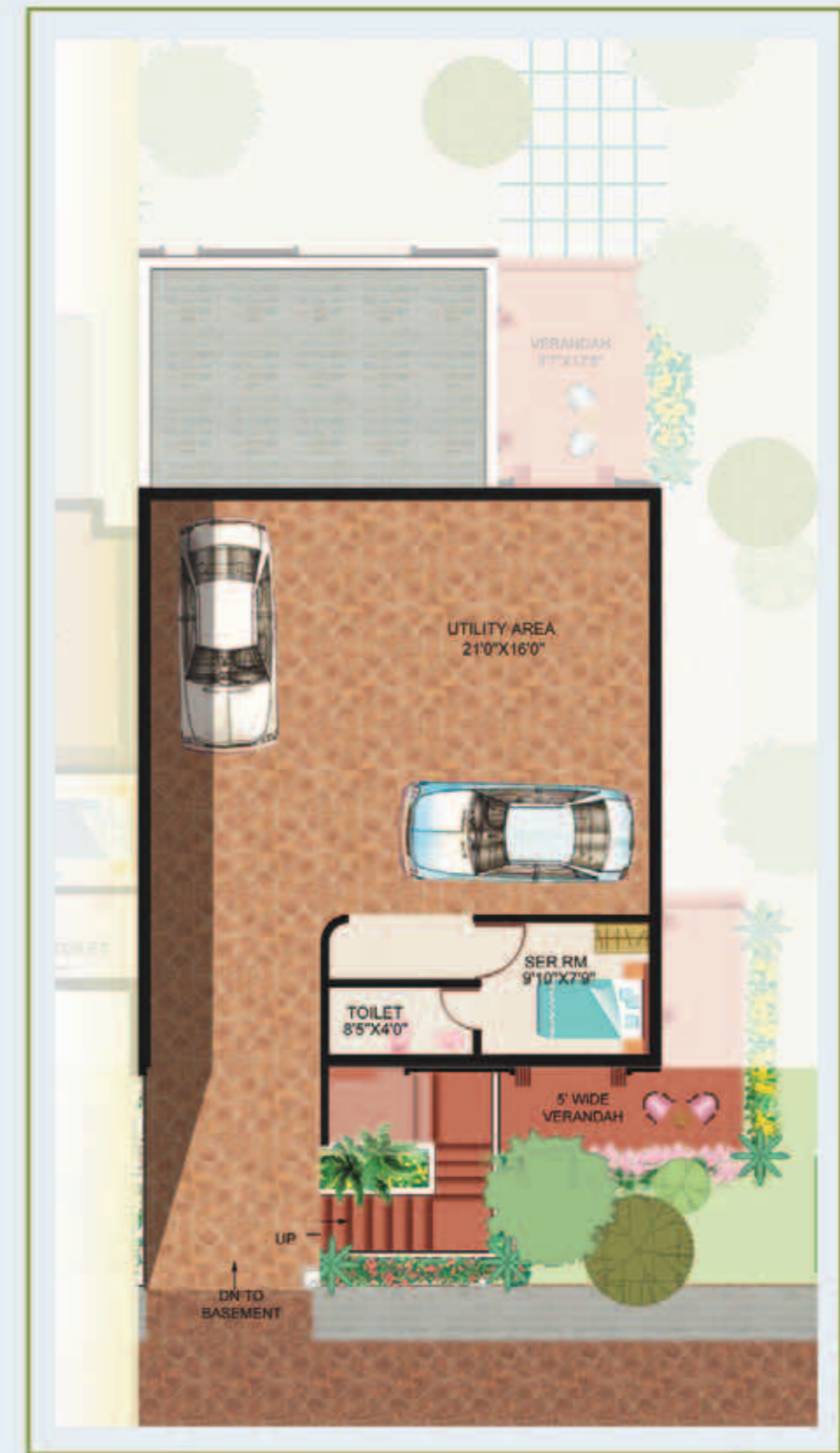


Four-bedroom villas (20 units)

	Floor area	Utility & CP area	Garden area (not chargeable)	Terrace area	Saleable area
Lower ground floor	–	975	–	–	975
Upper ground floor	1518	–	1155	–	1518
1st floor	1459	–	–	–	1459
Terrace*	–	–	–	1221	407
Total area	2977	975	1155	1221	4359

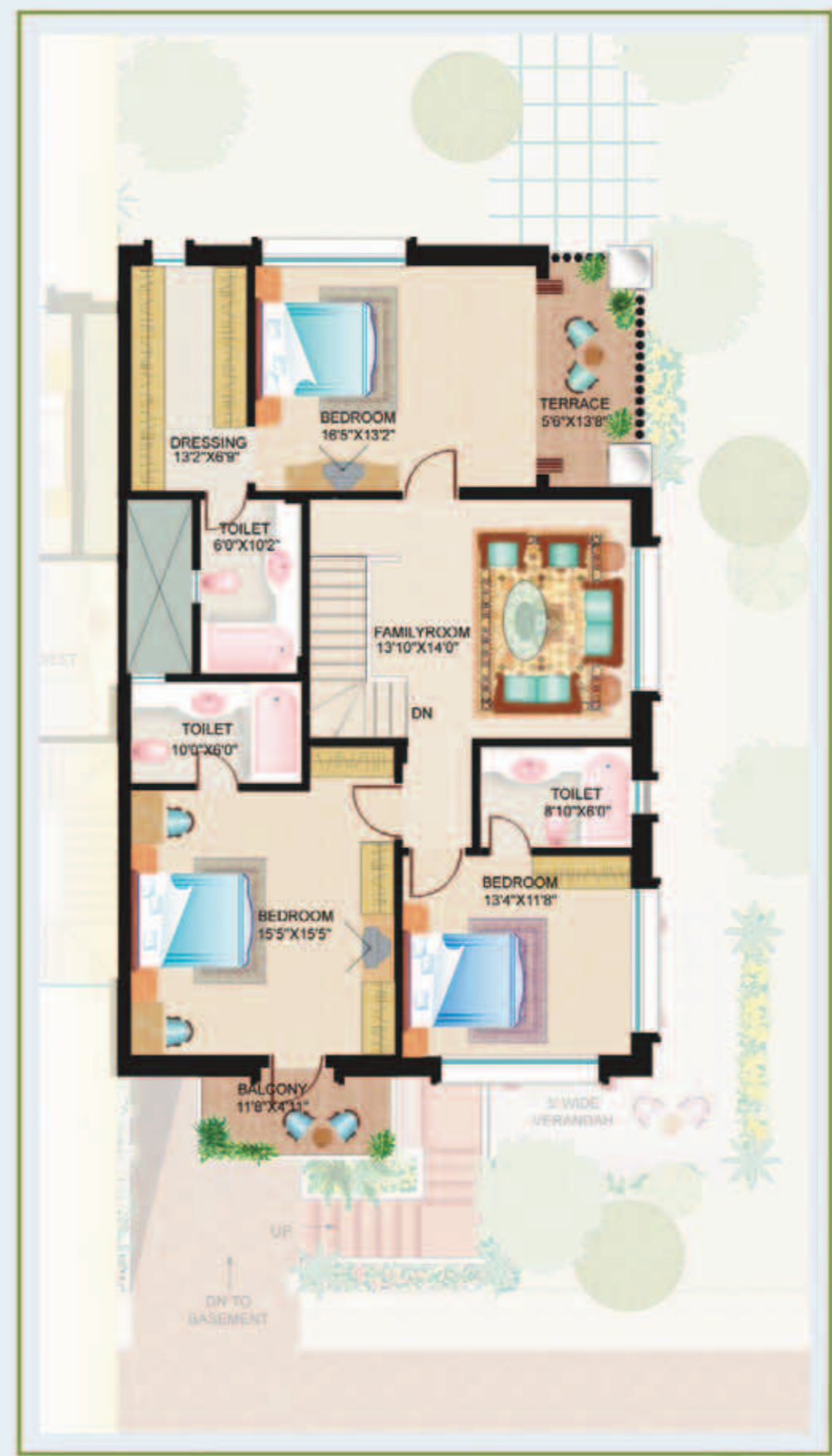
Figures in sq ft

* Only 1/3 chargeable



LOWER GROUND FLOOR

UPPER GROUND FLOOR WITH LANDSCAPE



FIRST FLOOR



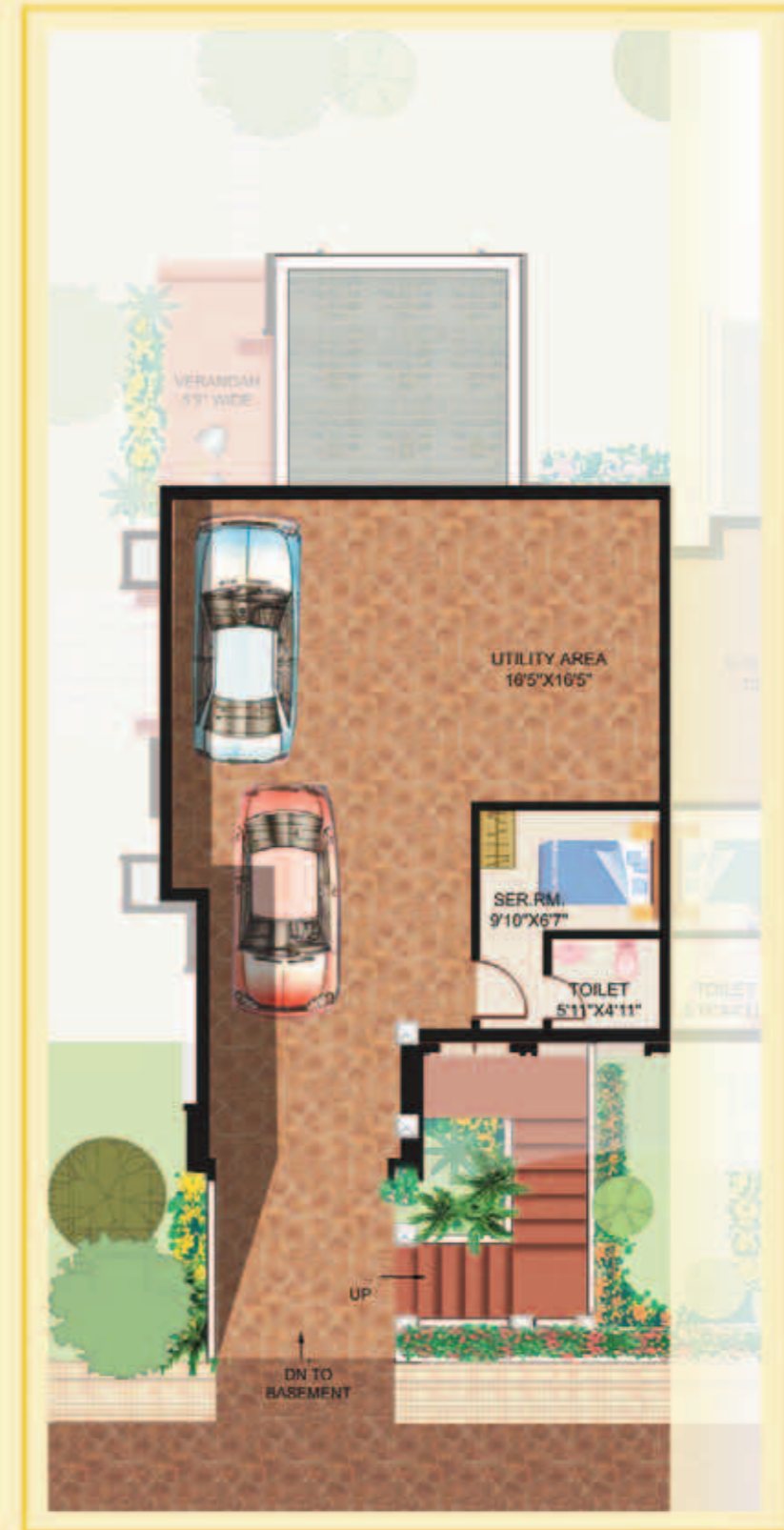
VILLA LEON



Three-bedroom villas (48 units)

	Floor area	Utility & CP area	Garden area (not chargeable)	Terrace area	Saleable area
Lower ground floor	-	837	-	-	837
Upper ground floor	1167	-	1145	-	1167
1st floor	1183	-	-	-	1183
Terrace*	-	-	-	887	296
Total area	2350	837	1145	887	3483

Figures in sq ft
* Only 1/3 chargeable



LOWER GROUND FLOOR

UPPER GROUND FLOOR WITH LANDSCAPE



FIRST FLOOR



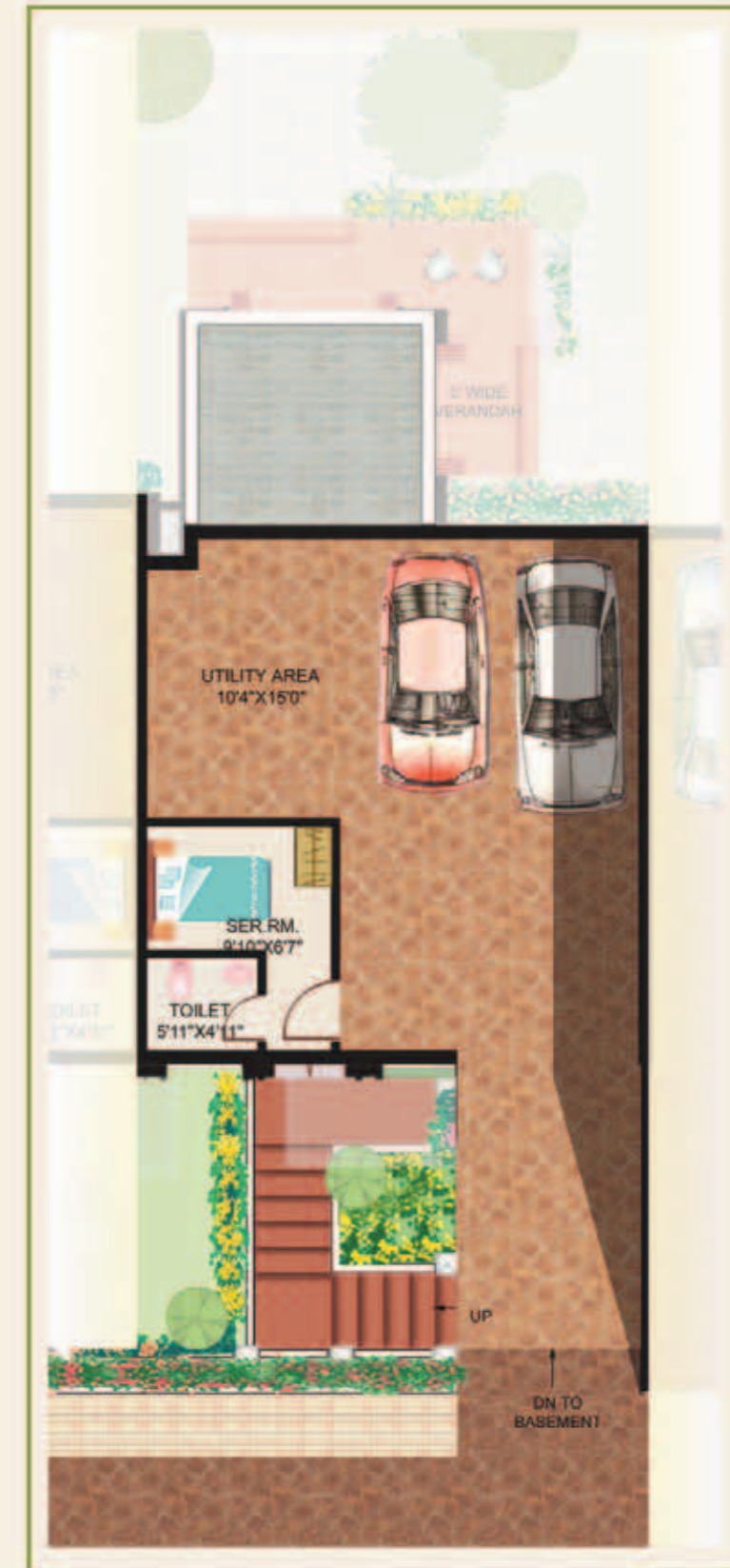
VILLA PEDRO



Two-bedroom villas (57 units)

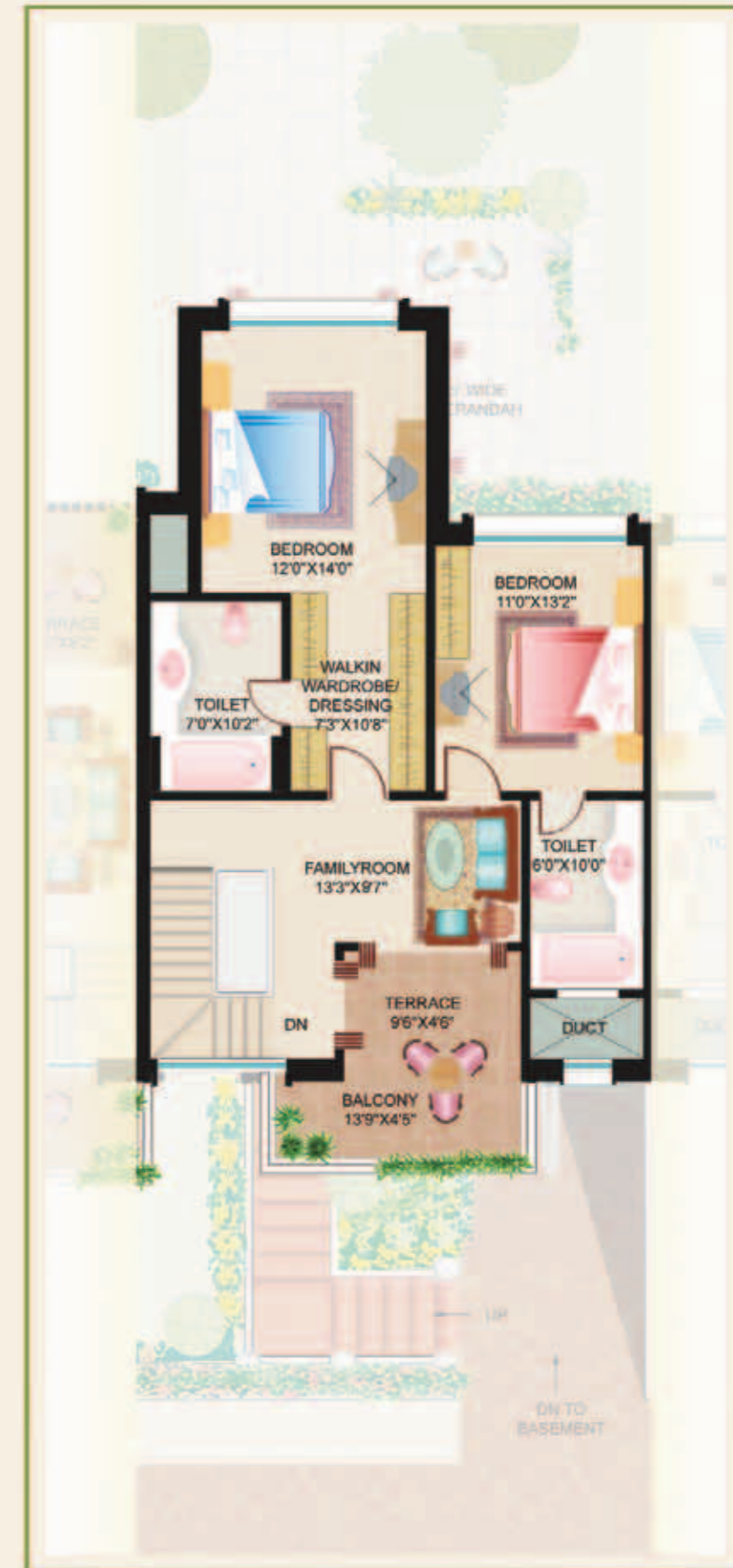
	Floor area	Utility & CP area	Garden area (not chargeable)	Terrace area	Saleable area
Lower ground floor	–	772	–	–	772
Upper ground floor	1030	–	617	–	1030
1st floor	965	–	–	–	965
Terrace*	–	–	–	824	275
Total area	1995	772	617	824	3042

Figures in sq ft
* Only 1/3 chargeable



LOWER GROUND FLOOR

UPPER GROUND FLOOR WITH LANDSCAPE



FIRST FLOOR



Pathway around the pool



Walking tracks



Infinity weir



Club courtyard



Children's park



Tree-lined driveways



- A badminton court, squash, swimming pool, table tennis and pool room.
- Health spa (gymnasium, steam and jacuzzi).
- Indoor games like carrom, cards and other board games.
- Children's play area.
- Small cafeteria.
- Yoga and meditation room.
- Indoor party hall opening onto a party lawn with an attached kitchen.



