



Luxurious life within your reach



Luxury Green Apartments, Whitefield





LUXURIOUSLY
CLOSE
TO EVERYTHING!



WHITESTONE
LANDMARK

Luxury Green Apartments, Whitefield

work



near home

Close to ITPL the hub of IT companies

study



near home

Close to some of the best international schools in Bangalore

shop



near home

Close to Forum Value Mall, the latest Shopping Destination

eat



near home

Close to Top rated Restaurants

fun



near home

Close to Multiplexes & theatres



Luxury Green Apartments, Whitefield

Whitestone Landmark is located off the fast growing Whitefield Main Road. It is just a 5 minute drive to ITPL. Landmark - the GREEN Building with its eco-friendly nature & extravagant amenities, lavish landscape and luxurious apartment blocks stands magnificently over a 50,000 sft land, as the epitome of gracious living. Designed as per Vaastu, Landmark has extensive landscaped gardens with a mini club house, Gym, Swimming Pool etc.

Whitestone's Philosophy is to make life better. It's how our dream travels, beyond a mere four walls. Our dream is not just to better your homes, but to give you a far richer environment, a beautiful new world.

WhiteStone Landmark comprises of two blocks with 72 flats. Block 1 has 32 flats (all 3 bedrooms starting from 1620 sft to 1769 sft) & Block 2 has 40 flats (with 2 & 3 bedroom flats starting from 1100 sft to 1500 sft) on Ground + 3 upper floors structure. Landmark promises a rich blend of sports, recreation and fitness facilities besides lots of togetherness for the entire family.

Come, experience the warmth of Landmark. And you will sure wish you could work from home.



LUXURIOUS LIFE, WITHIN YOUR REACH



Amenities

- Beautifully Landscaped Gardens
- Swimming Pool with child pool Annexe
- Children's Play Area
- Multi-Purpose Hall
- Round the Clock Security
- Well Equipped Gym
- State of the Art Elevators
- Generator with sufficient Power Backup
- Intercom Facility
- Badminton, Table Tennis, Chess, Carrom



Specifications



Luxury Green Apartments, Whitefield

Flooring

- Vitrified tiles in the living, dining and bed rooms
 - Superior quality ceramic tiles for kitchen and bathrooms
-

Doors & Windows

- Main Door - Skin Door with teak wood frame
 - Skin paneled door for all bed rooms
 - Aluminium tracks windows with mosquito mesh
-

Kitchen

- Granite kitchen counter with stainless steel sink and dadoing for 2 feet
 - Provision for Washing Machine in utility area
-

Electrical

- TV Points in living room and master bedroom
 - Fire resistant electrical cabling
 - Elegant electrical switches
 - Telephone point in living room and master bedroom
-

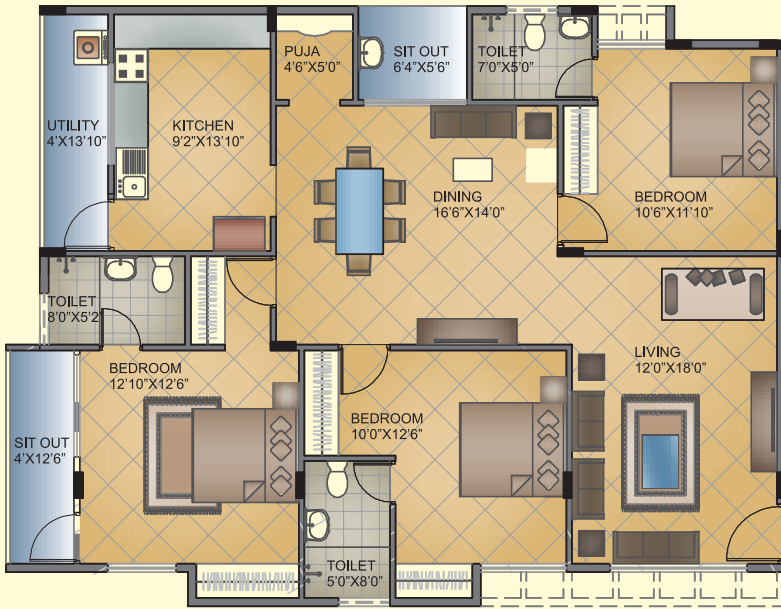
Bathrooms

- Ceramic flooring for all bathrooms and dado upto 7 feet
- Premium Sanitary ware (Hindware / Parryware or Equivalent)
- Washbasins in all bathrooms
- Premium quality CP Fittings
- Provision for geysers and exhaust fans

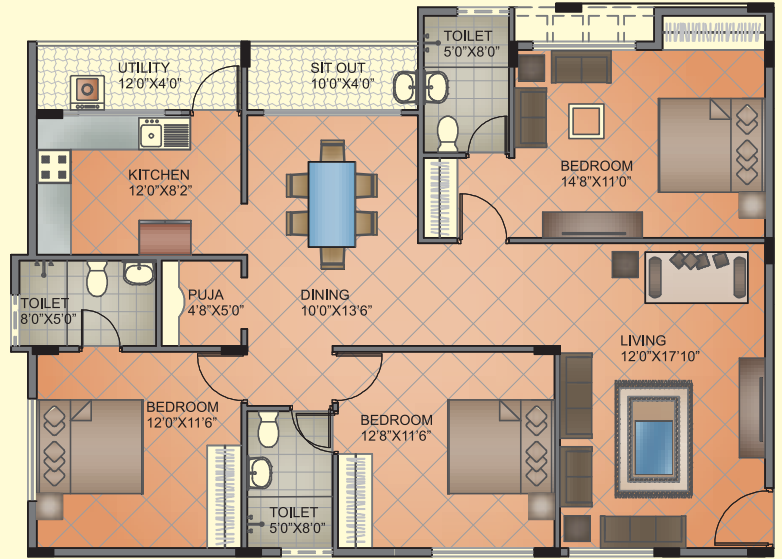


FLOOR PLANS

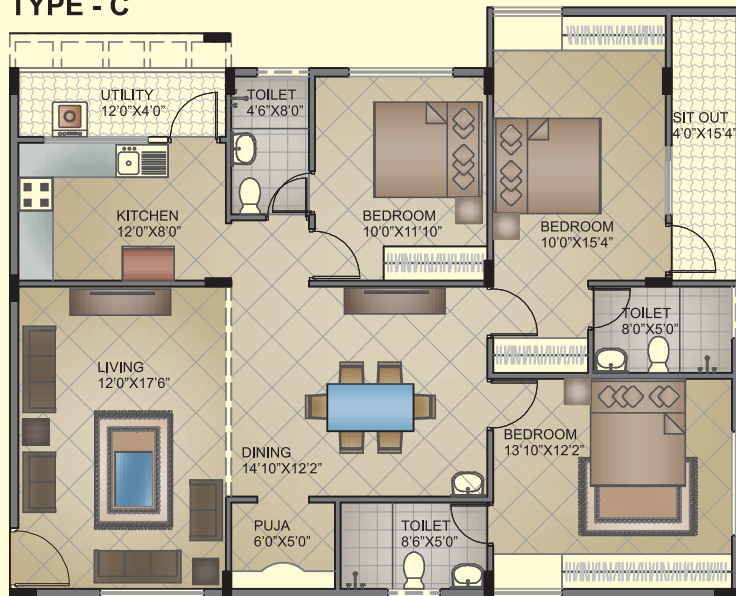
TYPE - A



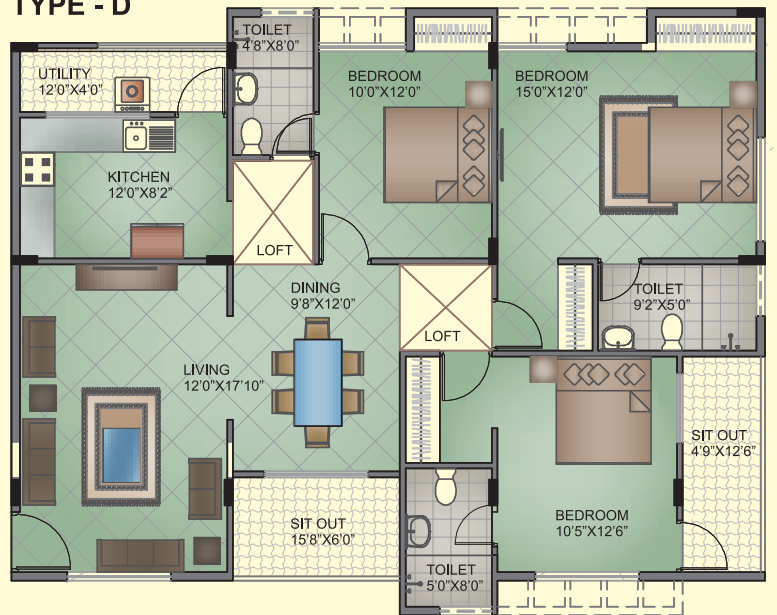
TYPE - B



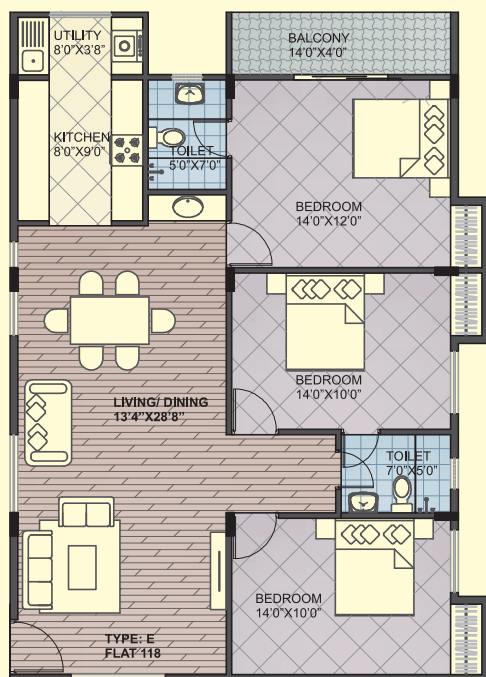
TYPE - C



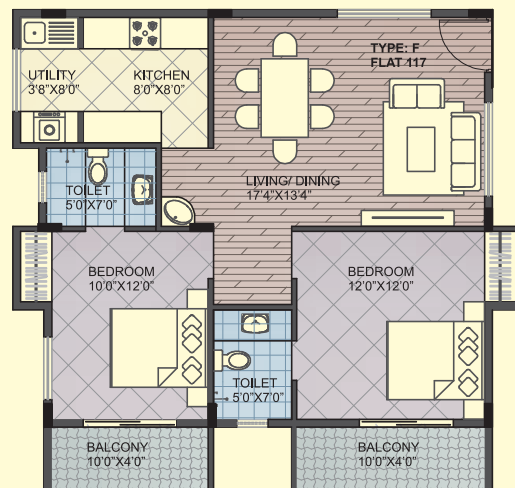
TYPE - D



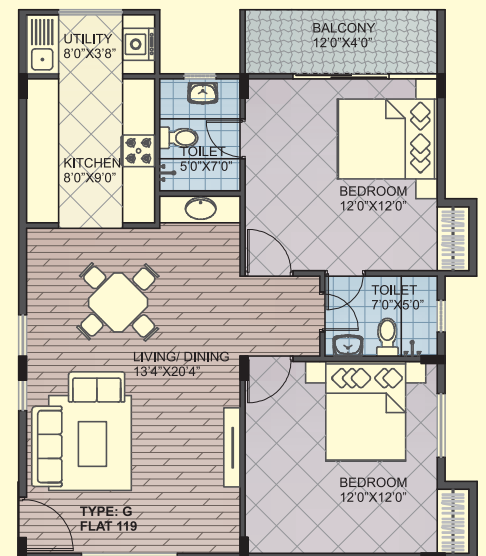
TYPE - E



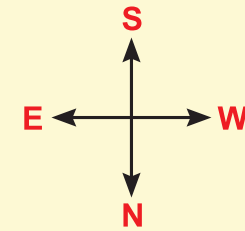
TYPE - F



TYPE - G



LAYOUT PLAN



Flat Area & Details

TYPE	AREA	FLAT Nos.
A	1769 sft	101, 201, 301, 401, 105, 205, 305, 405
B	1620 sft	103, 203, 303, 403, 107, 207, 307, 407
C	1620 sft	104, 204, 304, 404, 108, 208, 308, 408
D	1687 sft	102, 202, 302, 402, 106, 206, 306, 406
E	1500 sft	110, 210, 310, 410, 112, 212, 312, 412, 114, 214, 314, 414, 116, 216, 316, 416, 118, 218, 318, 418
F	1115 sft	109, 209, 309, 409, 111, 211, 311, 411, 115, 215, 315, 415, 117, 217, 317, 417
G	1140 sft	119, 219, 319, 419



Luxury Green Apartments, Whitefield

STRATEGICALLY LOCATED

