

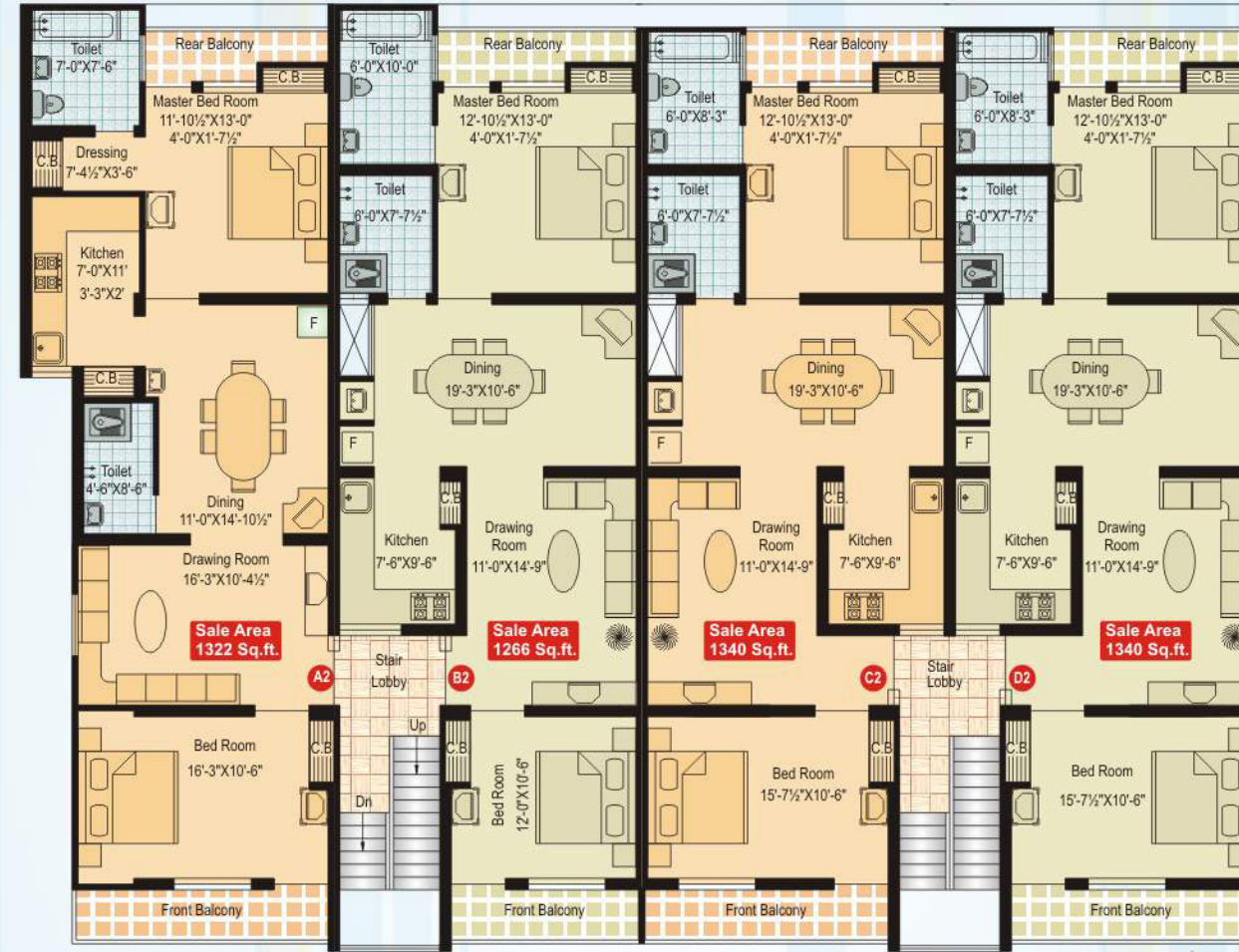
# BHAVYAA Paradise

modern living for your dear ones

**Aradhana Buildtech** – a name to reckon with in Jaipur's Real Estate market has something new and innovative to offer with each of its projects. With numerous projects under its belt, the group possesses a right mix of experience and exposure.

Our latest offering is the picturesque and scenic '**Bhavyaa Paradise**'. An amalgamation of twelve 2-BHK flats, the project faces 200' road. It is conveniently placed from the Jagatpura bus stand, railway station and airport. The project is a quality offering in terms of facilities and cost. A serene environment with modernity in view, **Bhavyaa Paradise** is surely a heavenly abode to live in!

Finance  
Easily  
Available



TYPICAL (1st & 2nd) FLOOR PLAN



TERRACE FLOOR PLAN



### SALIENT FEATURES

- Independent floors
- 2 BHK Flats
- Vastu Friendly
- Best Quality Work
- Affordable Price
- No Extra Cost for Parking
- Located near 200' wide Road
- Two Minutes drive from Airport
- Developed Colony near Bus Stand
- Technically Approved by JDA
- Executed by experienced Engineers
- Modern & eye catching view of building



### SPECIFICATIONS :

- R.C.C. Roof slab as per design
- Boring with submersible pump set
- Flush doors finished with spirit polish
- Main door with veneer finish with polish
- Door/ Window frames of stone with provision of wire mesh d/w
- Teak wood windows with glass & M.S.
- grills
- Vitrified tiles flooring in all rooms
- Black Granite platform & SS Sink in kitchen
- Standard sanitary wares and C.P. fittings
- Interior finish with P.O.P. and premium Quality paints and distemper
- Ceiling decorated with P.O.P. cornice and beading in drawing & dining
- Premium quality Glazed tiles in toilets and kitchen
- Exterior finish with Roller Texture
- Electrical fittings with ISI marked wire and Modular switches
- Provision for fans, lights, geysers, T.V. & Telephone