



Aapka Apna Ghar @  
aravali hills.com

**NAREDCO**  
National Real Estate Development Council

Decided with confidence, We are NAREDCO Certified...

### Hamilton Heights | Sector-37 | Faridabad



### Project Highlights

#### Fully Loaded Luxury Apartments

Air-Conditioners in all Rooms | Wooden Flooring in Master Bed-Room  
Wardrobes | Modular Kitchen  
Designer Tiles | Hi-end Bathroom Fittings

#### Eco Friendly Green Environment

Fountains | Water bodies in the green areas  
Kids theme parks | Jogging and walking tracks

#### Club House

Swimming Pool | Gymnasium  
Jacuzzi | Steam Room  
Squash Court | Tennis Court  
Television Lounge | Business Center

#### Earthquake Resistant R.C.C. Framed Structure

24X7 Security System & Fire Fighting System

24X7 Power Backup & Water Supply

All Apartments are 3-Side open for ample light, fresh air & view

### Location Highlights

Very Well Located at **Sector-37, Faridabad**

Just 2 Minutes Drive From Mohan Co-op & Delhi (Badarpur) Border

Minutes away from fully operational Badarpur Flyover

Walking distance from proposed Metro Station

5 Minutes Drive from Appolo Hospital, Jasola Commercial Complex

Within 20 Minutes drive from Nehru Place & Greater Kailash

Very near to the food joints like Mc-Donalds, PindBaluchi, Nirulas, MotiMahal etc. & a lot of Multiplexes

Many more Malls, Office Complexes & IT Parks coming up in nearby area

Very well connected with Gurgaon, Noida & Greater Noida as well

**Show Apartment Ready | Choose your Apartment at the time of Booking**

Accommodation	Approximate Super Area	Basic Rate	Aravali hills.Com Special Rate	Basic Sale Price [BSP]	Booking Amount	Floor Plan	Site Video & Pictures
The Premier 3BHK + Servant	1800 Sq. Ft.	4400/- per Sq. Ft	4200/- per Sq. Ft	75'60'000/-	7'00'000/-	<a href="#">Click</a>	Watch  Watch
The Elegante 3BHK + Study + Servant	2033 Sq. Ft.	4400/- per Sq. Ft	4200/- per Sq. Ft	85'26'000/-	7'00'000/-	<a href="#">Click</a>	Watch  Watch
The Grandeur 3BHK + Servant	2366 Sq. Ft.	4400/- per Sq. Ft	4200/- per Sq. Ft	99'37'200/-	9'00'000/-	<a href="#">Click</a>	Watch  Watch

Prices are indicative & subject to change without prior notice. Please contact for the exact prices at the time of booking. Terms & Conditions apply as per Application Form & Buyer's Agreement.

Payment to be made in favour of "HAMILTON HEIGHTS PVT. LTD." by account payee cheque or Demand Draft payable at New Delhi.

**+91.99.102.24999 | +91.98.102.24999**

[www.aravali hills.com](http://www.aravali hills.com)

[apnagar@aravali hills.com](mailto:apnagar@aravali hills.com)

## Additional Charges And Detailed Payment Plan

### Additional Charges

Car Park (per bay)	INR 2,75,000/- (One Covered-Mandatory)
	INR 1,75,000/- (Open-Optional)
Power Backup Installation Charges (Up to 5KVA for 1800 Sq. Ft. & 2033 Sq. Ft. Apartments & 7KVA for 2366 Sq. Ft. Apartment)	INR 25,000/- per KVA
Interest Free Maintenance Security (IMFS)	INR 50/- per sq. ft.
Club Membership	INR 75,000/-
ECC & FFC Charges	INR 50/- per sq. ft.
<b>External Development Charges &amp; Infrastructure Development Charges (EDC &amp; IDC)</b>	INR 215/- per sq. ft.

### Preferred Location Charges (PLC)

Top Floor	INR 100/- per sq. ft.
Pool/River/Sun Rising facing	INR 50/- per sq. ft.
First Floor	5% of BSP
Second	4% of BSP
Third Floor	3% of BSP

### Payment Plan (Construction Linked Payment Plan)

At the time of Booking/Registration	INR 7,00,000/- (1800 Sq. Ft. Apartment) INR 7,00,000/- (2033 Sq. Ft. Apartment) INR 9,00,000/- (2366 Sq. Ft. Apartment)
Within 45 days of Booking	15% of BSP
On Casting of Basement Roof	15% of BSP + 50% PLC + 50% (EDC & IDC)
On Casting of Ground Floor Roof	10% of BSP + 25% PLC + 50% (EDC & IDC)
On Casting of Second Floor Roof	10% of BSP + 25% PLC
On Casting of Fourth Floor Roof	5% of BSP + Car Parking
On Casting of Sixth Floor Roof	5% of BSP + 50% (EEC + FFC)
On Casting of Eighth Floor Roof	5% of BSP + 50% (EEC + FFC)
On Casting of Tenth Floor Roof	5% of BSP
On Casting of Top Floor Roof	5% of BSP
On Completion of Internal Plaster	5% of BSP
On Completion of External Plaster	5% of BSP
On Completion of Flooring	5% of BSP + Power Backup
At the time of Possession Offer	Balance of BSP + IFMS + Club Membership + Other Charges (Stamp Duty etc.)

For Bookings or More Details, Contact us now:

	E-mail	<a href="mailto:apnagar@aravali hills.com">apnagar@aravali hills.com</a>   <a href="mailto:aravali hills.com@gmail.com">aravali hills.com@gmail.com</a>
	Mobile [9AM to 9PM, All Days]	+91.99.102.24999   +91.98.102.24999



Welcome to Hamilton Heights



PREV

NEXT

The Grandeur



NEXT

The Grandeur : Outside view depicting corner bay window and oval balcony



PREV

NEXT

Luxurious Living Room with corner bay window



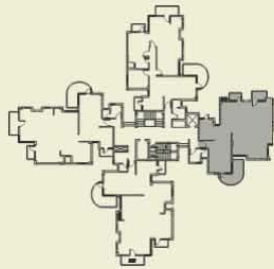
PREV

NEXT

Master Bedroom with corner bay window



aravali hills.com  
 Explore | Learn | Decide  
 ...with confidence

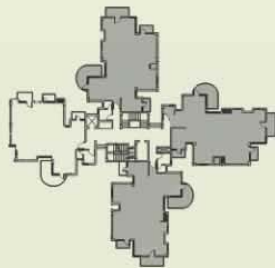


**The Premier**  
**3 Bed Room Apartment**  
**Tentative Super Area : 1800 Sq. Ft.**  
 (Saleable Area)  
 Facilities :  
 Drawing Room, Dining Room,  
 1 Master Bed Room, 2 Bed Rooms,  
 3 Toilets, Kitchen, Servant Room  
 with Toilet, 4 Wide Balconies.

Note: In the interest of maintaining high standards, all floors & layout plans, dimensions & specifications are indicative & are subject to change as decided by the competent authority. Terms & Conditions apply.

To Book this apartment  
 Call now:  
 +91.99.102.24999 | +91.98.102.24999  
 E-mail: apnaghar@aravalihills.com  
 www.aravalihills.com





**The Elegante**  
**3 Bed Room + Study Room Apartment**  
**Tentative Super Area : 2033 Sq. Ft.**  
 (Saleable Area )  
 Facilities :  
 Drawing Room, Dining Room,  
 1 Master Bed Room, 2 Bed Rooms,  
 1 Study Room ,3 Toilets, Kitchen,  
 Servant Room with Toilet, 4 Wide  
 Balconies.

Note: In the interest of maintaining high standards, all floors & layout plans, dimensions & specifications are indicative & are subject to change as decided by the competent authority. Terms & Conditions apply.

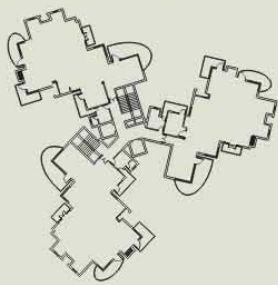
To book this apartment,  
 Call Now:  
 +91.99.102.24999 | +91.98.102.24999  
 E-mail: apnagar@aravali hills.com

[www.aravali hills.com](http://www.aravali hills.com)

**H**  
 HAMILTON  
*Heights*



arava.com  
Explore | Decide  
...with confidence



**The Grandeur**  
**4 Bed Room Apartment**  
**Tentative Super Area : 2366 Sq. Ft.**  
 (Saleable Area )  
 Facilities :  
 Drawing Room, Dining Room, 1 Master  
 Bed Room, 3 Bed Rooms, 4 Toilets,  
 Kitchen, Servant Room with Toilet,  
 5 Wide Balconies.

Note: In the interest of maintaining high standards, all floors & layout plans, dimensions & specifications are indicative & are subject to change as decided by the competent authority. Terms & Conditions apply.

To book this apartment,  
 Call Now:  
 +91.99.102.24999 | +91.98.102.24999  
 E-mail: apnaghar@aravali hills.com  
 www.aravali hills.com



## Specifications

Living / Dining	
Walls	Plastic Emulsion Paint
Floors	Imported Italian marble with central pattern/border of Indian/ equivalent quality marble
Doors	Internal : Panel / Teak moulded doors
Windows	Powder coated aluminum windows
Others	P.O.P cornices
Special Feature	Air-conditioned, with modular switches
Internal Lobby	
Walls	Plastic Emulsion Paint
Floors	Imported Italian marble with central pattern/border of Indian/ equivalent quality marble
Additional Feature	P.O.P cornices
Master Bedrooms	
Walls	Plastic Emulsion Paint
Floors	Laminated wooden flooring
Doors	Internal: Panel / Teak moulded doors
Windows	Powder coated aluminum windows
Special Feature	Air-conditioned, with modular switches
Additional Feature	Wood work of Wardrobe
Other Bedrooms	
Walls	OBD
Floors	Vetrified Tiles/ Marble
Doors	Internal: Panel / Teak moulded doors
Exterior	Powder coated aluminum windows
Special Feature	Air-conditioned, with modular switches
Kitchen	
Walls	Designer ceramic tiles up to 2 feet above counter-top
Floors	Combination of Marble & Indian stone / Anti-skid floor tiles
Work Counter	Granite counter with stainless steel sink
Doors	Panel / Teak moulded doors
Windows	Powder coated aluminum windows
Special Feature	Modular kitchen
Toilets	
Walls	Designer tiles
Floors	Anti-skid ceramic Tiles
Doors	Panel / Teak moulded doors
Ventilation	Powder coated aluminum
Others	Geysers/exhaust fans, granite/marble counter, modern porcelain sanitary ware and high quality bath fittings
Special Features	Provision of Shower Cubical in Master Bed Room's Toilet (only in 4 Bed Room Apartments)
Balconies	
Floors	Tiles
Doors / Windows	Powder coated aluminum doors & windows
Others	Railings in M.S. steel/concrete balusters
Servant Room	
Walls	OBD
Floors	Ceramic tiles
Doors	Internal : Panel / Teak moulded doors
Windows	Powder coated aluminum windows
Lift Lobby / Floor	
Walls	OBD
Floors	Granite/Marble/ Combination of one or more of Indian stone
Sanitary ware / CP fittings	Hindware/ Parryware / Cera / Hindustan or equivalent brand for the sanitary ware and Jaquar/ Mark/Gem or equivalent brand for CP fittings.
Security Systems	24x7 modern C.C.T.V surveillance system for common areas
Power Backup	100% power backup
Structural Design	Structure designed for the highest seismic considerations for Zone V, against Zone IV as stipulated by the code, for better safety.

• Brands & Makes are just indicative and they will be of equivalent make and quality as per availability. • Marble & Granite being natural materials have inherent characteristics of colour & grain variation. • In case of non-availability of imported marble, laminated wooden flooring and any other imported material, equivalent quality Indian substitute will be used. • In the interest of maintaining high standards all floor plans, layout plan and specifications are just indicative and are subject to change as decided by the company or any competent authority. • Pictures shown in this Brochure are just indicative and actual specification may vary.

Location Map  
Not to Scale

**Legend**

- + Hospitals
- \* Hotels
- School
- Malls
- Other Imp. Destinations

