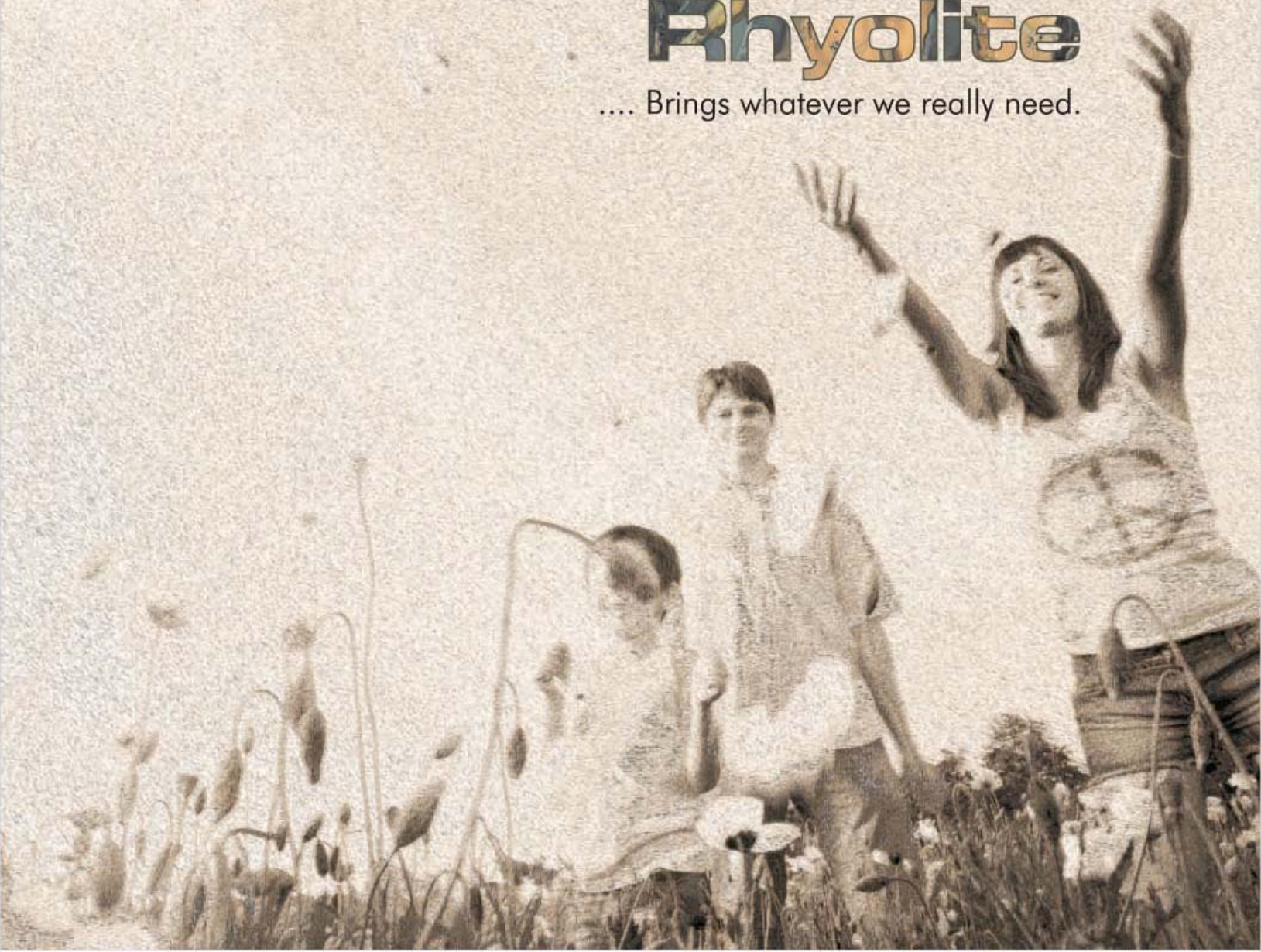


MAHAVEER
ECO FRIENDLY HOMES

MAHAVEER

Rhyolite

.... Brings whatever we really need.





....Revive the magic of absolute living

MAHAVEER

Rhyolite

.... Brings whatever we really need.



See the world like never before. Let your eyes open to the possibilities there are, the much life that you had never noticed prior to now. A picture perfect rendition of style and luxury that sets you apart from the rest. Welcome to Mahaveer Rhyolite.

MAHAVEER

Rhyolite

.... Brings whatever we really need.



Ground Floor Plan

MAHAVEER

Rhyolite

.... Brings whatever we really need.



Typical Floor Plan

MAHAVEER

Rhyolite

.... Brings whatever we really need.





MAHAVEER

Rhyolite

.... Brings whatever we really need.



Mahaveer Rhyolite is an exclusive residential project at Bangalore that merges aesthetics with convenience to make life very easy and stress free. Nestled in serene surroundings, yet located ideally within heart of the city. Each flat is designed to offer more, and is sure to be the talk of the town in days to come. And with all facilities at hand touching distance, you won't have to leave the apartment for anything. In fact, you run out of time but not out of things to do!



MAHAVEER

Rhyolite

.... Brings whatever we really need.

2 BHK - UNIT PLANS



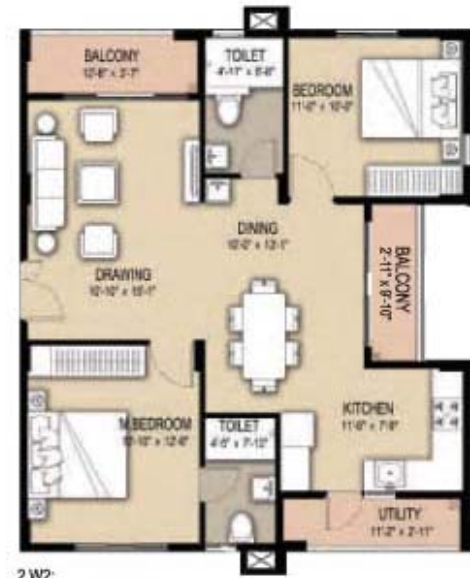
2E1:
AREA: 1127 SQFT



2W1:
AREA: 1088 SQFT



2E2:
AREA: 1169 SQFT



2W2:
AREA: 1136 SQFT

EAST FACING

WEST FACING

3 BHK - UNIT PLANS



3 E1:
AREA: 1378 SQFT

EAST FACING



3 N1:
AREA: 1449 SQFT

NORTH FACING



3 S1:
AREA: 1364 SQFT

SOUTH FACING

3 BHK - UNIT PLANS

WEST FACING



Amenities



Our journey is driven all along by a passion to create, not just structures, but a whole way of ecofriendly and stress free living. Our homes boast of excellent amenities and facilities and not to forget, the tranquil setting amidst the city. Mahaveer Rhyolite has all the following delight to you.

- * Swimming Pool
- * Amphitheater
- * Fully equipped Gym
- * Multi-purpose hall
- * Indoor Games Room
- * Basketball Half court
- * Guest rooms
- * Children Play area



What you will get in Mahaveer Eco-friendly homes

MAHAVEER

Rhyolite

... Brings whatever we really need.

Rain Water Harvesting

Water collected from the rooftop will be used for potable water after suitable filtration. Ground water runoff will be sent to recharge pits thereby recharging the natural aquifer's. (To bring up the ground water level). It will lessens the demand of municipal water supply, hence saving money on utility bills.

Waster water recycling

The treated water will be used for the toilet flush as well landscaping reducing potable water consumption by approximately 50%. It's a Odour less system and easy operable.

Solar powered energy

The system can generate 10 KW electricity and utilized for lighting common areas and garden thereby insuring well lit surroundings all through the night.

Solar Hot Water System

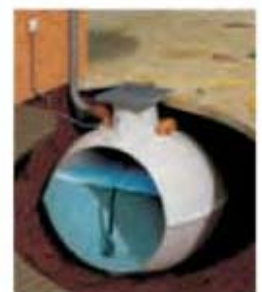
The system will generate solar hot water for bathing and washing. This system eliminates the hassle of installing hot water gyeser and inflated power bill.

Organic waste management

Generated waste from household activity will be converted into energy. Biogas by a product of this system can be utilised as fuel for cooking as it has a significant calorific value of 5000 Kcal/m³ thereby reducing the LPG cost. This also ensures odorless and clean environment.

Ecofriendly materials for construction

These homes are constructed using eco friendly products like Robosand, Fly ash, eco-paint and other products thereby greatly reducing the impact on the environment. This will not only saves the environment but also saves money for the residents.



A Wipro Eco-Energy consultants for the Mahaveer Eco Friendly Homes Concept.

Specifications



FOUNDATION / STRUCTURE	: R.C.C. Structure.
WALLS	: Solid concrete blocks.
WALL FINISHES	: a. Internal walls Pastly with acrylic emulsion paint. b. External walls Paint/ Texture paint @ designated areas.
FLOORING	: Vitrified tile flooring for Living, dining and all bedrooms, kitchen, and ceramic tile flooring for Utility, Toilets Ceramic tile dado for Toilets up to 7' height.
WATER PROOFING	: Water proofing treatment for areas exposed to water such as toilets, balconies and terraces.
DOORS & WINDOWS	: a. Main door Teak wood frame, paneled shutter finished with melamine polish with good quality hardware. b. Internal doors Salwood/ veneer / Laminate and fixed with good quality hardware. Aluminum sliding doors with glass panel for all balconies. c. Windows Powder coated aluminum window system with glass as per design.
KITCHEN	: Granite platform /counter with stainless steel sink, 2' height ceramic tile dado above platform
ELECTRICAL INSTALLATIONS	: Concealed fire retardant wiring with modular switches.
SANITARY & PLUMBING WORKS	: Sanitary fittings Ceramic ware and CP fittings with reputed brands
WATER SUPPLY PIPING	: Superior quality CPVC/ PPRIRGI or equivalent piping.
STAIRCASE RAILING/ EXTERNAL HAND RAILING	: Ms Powder coated Railing for Staircase and Balconies
EXTERNAL PAVINGS LANDSCAPING	: Cement based tiles in Car Porch/Patios/drive ways : Landscaped as per architect's design.
LIFT LOBBY& CORRIDOR	: Marble/ granite flooring.

Location Plan



Red Coral Properties

a sister concern of Reddy Structures Pvt.Ltd.
 No.9, Mahaveer House, Opp: IDBI Bank, 24th Main,
 Jp Nagar 6th Phase, Bengaluru- 560078.
 Ph: 080- 40728800, email: sales@mahaveergroup.in

This project is a joint venture of NSL Hyderabad



The concept of eco-friendly homes is registered to
Green Rating for Integrated Habitat Assessment, India.

Architects

fountainhead design