



PHOENIX SQUARE













Key plan:

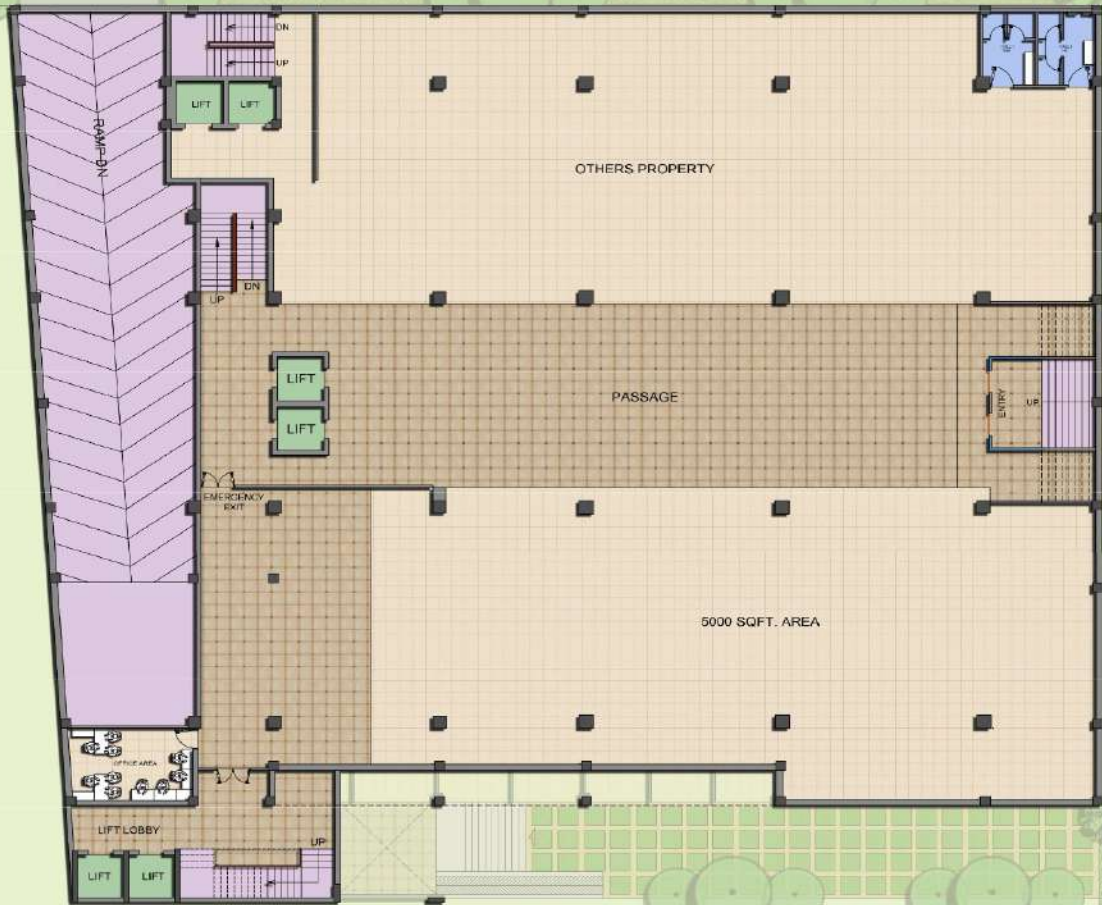
North:

Architects:

SAH DESIGN STUDIO Architects, Planners, Interiors & Landscape Designers
 G-44, FV, Jockey Road, Raj Vihar Road,
 Near Central Bank of India, New Delhi - 110025
 Mobile: +91-9810786258, +91-8700407569

Subtitle:

**BASEMENT
FLOOR PLAN**



Key plan:

Phoenix Square

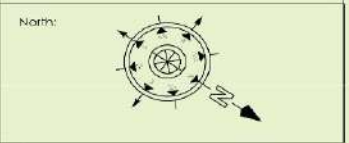
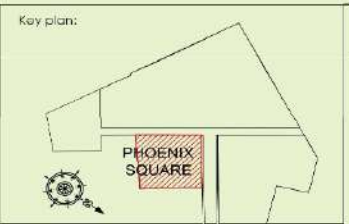
North:

Architects:

SAH DESIGN STUDIO Architects, Planners, Visualisers, Interiors & Landscape Designers
 G 44, IVF, Jockey Road, Raj Vihar Road,
 Near Central Bank of India - New Delhi - 110026
 Mobile: +91-9810786268, +91-8200347569

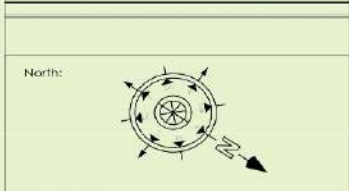
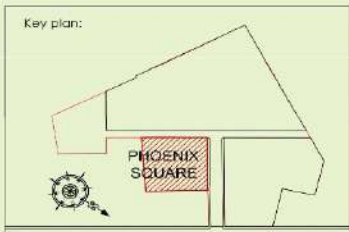
Subtitle:

**LOWER GROUND
FLOOR PLAN**



Architects:
SAH DESIGN STUDIO
 Architects, Planners, Interiors & Landscape Designers
 0-44, 1/F, Jeejeebhoy Road, Malviya Nagar,
 Near Central Bus Stand of Malviya Nagar, New Delhi-110028
 Mobile: +91-9810785286, +91-8750411268

Subtitle:
GROUND FLOOR PLAN

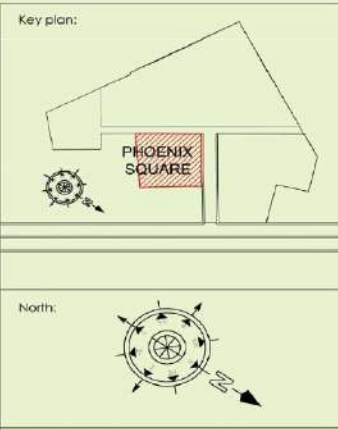


Architects:
SAH DESIGN STUDIO Architects, Planners, Interior & Landscape Designers
 G-44, IV, Jockey Road, Raj Vihar Road,
 Near Central Bank of India - New Delhi - 110026
 Mobile: +91-9810786258, +91-8860034156

Subtitle:
FIRST FLOOR PLAN



FIRST FLOOR AREA					
SHOP No.	WIDTH (FT.)	LENGTH (FT.)	BUILT UP AREA SQ. FT.	SUPER AREA SQ. FT.	
BANK	PL		3681	5601	
PHOENIX OFFICE	PL		1690	2571	
FF-01					BANK
FF-02					
FF-03					
FF-04					
FF-05					
FF-06					
FF-07					
FF-08					PHOENIX OFFICE
FF-09					
FF-10					
FF-11	12.75	19.5	=	249	378
FF-12					PHOENIX OFFICE
FF-12-A					
FF-14					
FF-15					BANK
FF-16					
FF-17					
FF-18					
FF-19					
FF-20					
FF-21	18.5	19.5	=	361	549
FF-22	10.25	19.5	=	200	304
FF-23	10.5	19.5	=	205	312
FF-24	9.75	19.5	=	190	289
FF-25	9.5	19.5	=	185	282
FF-26	9.75	19.5	=	190	289
FF-27	10.75	19.5	=	210	319
FF-28	11	19.5	=	215	326
FF-29	12.5	19.5	=	244	371
FF-30	12.75	19.5	=	249	378
FF-31	12.75	22	=	281	427
FF-32	12.5	22	=	275	418
FF-33	11	22	=	242	368
FF-34	10.75	22	=	237	360
FF-35	9.75	22	=	215	326
FF-36	9.5	22	=	209	318
FF-37	9.75	22	=	215	326
FF-38	10	22	=	220	335
FF-39	9.75	22	=	215	326
FF-40	10	22	=	220	335
FF-41	17.5	22	=	385	586
FF-42	PL		=	241	367
FF-43	PL		=	215	328
FF-44	PL		=	223	339
FF-45	PL		=	229	349
FF-46	PL		=	236	359
FF-47	PL		=	244	372
FF-48	PL		=	748	1138
K-1	17.25	8.25	=	142	217
K-2	17.25	8.25	=	142	217
				13000	19781



Architects:

SAH DESIGN STUDIO
 Architects, Planners, Interiors & Landscape Designers
 G-44, FF, Jyoti-Bhadrani Gurgaon Main Road,
 New Convent Bank of India, New Delhi-110026
 Mobile-91-9810780263, -91-8100401280

Subtitle:

FIRST FLOOR PLAN



Key plan:

Phoenix Square

North:

Architects:

SAH DESIGN STUDIO Architects, Planners, Interior, Landscape Designers
 G-44, IVF, Jyoti Khera Road, New Delhi - 110025
 Mobile: +91-9810782558, +91-8200347560

Subtitle:

SECOND FLOOR PLAN



Key plan:

Phoenix Square

North:

Architects:

SAH DESIGN STUDIO Architects, Planners, Interiors & Landscape Designers
G-44, FV, Jockey Road, Rajiv Gandhi Road,
Near Central Bank of India, New Delhi - 110025
Mobile: 91-9810786258, 91-8700401269

Subtitle:

THIRD FLOOR PLAN



Key plan:

Phoenix Square

North:

Architects:

SAH DESIGN STUDIO Architects, Planners, Interior & Landscape Designers
 G 44, IVF, Jockey Road, Rajiv Gandhi, Near Central Bank of India, New Delhi - 110026
 Mobile: +91-9810786258, +91-8200347560

Subtitle:

TOP FLOOR PLAN



**INFRA
BRICK**
PROUDLY RELIABLE

AREA CALCULATION SHEET

GROUND FLOOR AREA					
SHOP No.	WIDTH	LENGTH		BUILT UP AREA	SUPER AREA
	(FT.)	(FT.)		SQ. FT.	SQ. FT.
GF-01	17.5	21	=	368	616
GF-02	10	21	=	210	352
GF-03	9.75	21	=	205	343
GF-04	10	21	=	210	352
GF-05	9.75	21	=	205	343
GF-06	9.5	21	=	200	334
GF-07	9.75	21	=	205	343
GF-08	10.75	21	=	226	378
GF-09	11	21	=	231	387
GF-10	18	21	=	378	634
GF-11	12.75	19.5	=	249	417
GF-12	12.5	19.5	=	244	409
GF-12-A	11	19.5	=	215	360
GF-14	10.75	19.5	=	210	351
GF-15	9.75	19.5	=	190	319
GF-16	9.5	19.5	=	185	311
GF-17	9.75	19.5	=	190	319
GF-18	10.5	19.5	=	205	343
GF-19	10.25	19.5	=	200	335
GF-20	18.5	19.5	=	361	605
GF-21	18.5	19.5	=	361	605
GF-22	10.25	19.5	=	200	335
GF-23	10.5	19.5	=	205	343
GF-24	9.75	19.5	=	190	319
GF-25	9.5	19.5	=	185	311
GF-26	9.75	19.5	=	190	319
GF-27	10.75	19.5	=	210	351
GF-28	11	19.5	=	215	360
GF-29	12.5	19.5	=	244	409
GF-30	12.75	19.5	=	249	417
GF-31	12.75	22	=	281	470
GF-32	12.5	22	=	275	461
GF-33	11	22	=	242	406
GF-34	10.75	22	=	237	396
GF-35	9.75	22	=	215	360
GF-36	9.5	22	=	209	350
GF-37	9.75	22	=	215	360
GF-38	10	22	=	220	369
GF-39	9.75	22	=	215	360
GF-40	10	22	=	220	369
GF-41	17.5	22	=	385	645
GF-42	PL		=	241	404
GF-43	PL		=	215	361
GF-44	PL		=	223	374
GF-45	PL		=	229	384
GF-46	PL		=	236	395
GF-47	PL		=	271	455
GF-48	PL		=	244	410
GF-49	PL		=	248	415
K-1	10	10	=	100	168
K-2	10	10	=	100	168
K-3	10	10	=	100	168
K-4	10	10	=	100	168
K-5	10	10	=	100	168
K-6	17.25	8.25	=	142	239
K-7	17.25	8.25	=	142	239
				12334	20679
LOADING FACTOR				1.68	

FIRST FLOOR AREA					
SHOP No.	WIDTH	LENGTH		BUILT UP AREA	SUPER AREA
	(FT.)	(FT.)		SQ. FT.	SQ. FT.
FF-01	17.5	21	=	368	588
FF-02	10	21	=	210	336
FF-03	9.75	21	=	205	327
FF-04	10	21	=	210	336
FF-05	9.75	21	=	205	327
FF-06	9.5	21	=	200	319
FF-07	9.75	21	=	205	327
FF-08	10.75	21	=	226	361
FF-09	11	21	=	231	369
FF-10	12.75	21	=	268	428
FF-11	12.75	19.5	=	249	398
FF-12	12.5	19.5	=	244	390
FF-12-A	11	19.5	=	215	343
FF-14	10.75	19.5	=	210	335
FF-15	9.75	19.5	=	190	304
FF-16	9.5	19.5	=	185	296
FF-17	9.75	19.5	=	190	304
FF-18	10.5	19.5	=	205	327
FF-19	10.25	19.5	=	200	320
FF-20	18.5	19.5	=	361	577
FF-21	18.5	19.5	=	361	577
FF-22	10.25	19.5	=	200	320
FF-23	10.5	19.5	=	205	327
FF-24	9.75	19.5	=	190	304
FF-25	9.5	19.5	=	185	296
FF-26	9.75	19.5	=	190	304
FF-27	10.75	19.5	=	210	335
FF-28	11	19.5	=	215	343
FF-29	12.5	19.5	=	244	390
FF-30	12.75	19.5	=	249	398
FF-31	13	22	=	286	457
FF-32	12.5	22	=	275	440
FF-33	11	22	=	242	387
FF-34	10.75	22	=	237	378
FF-35	9.75	22	=	215	343
FF-36	9.5	22	=	209	334
FF-37	9.75	22	=	215	343
FF-38	10	22	=	220	352
FF-39	9.75	22	=	215	343
FF-40	10	22	=	220	352
FF-41	17.5	22	=	385	616
FF-42	PL		=	241	386
FF-43	PL		=	215	344
FF-44	PL		=	223	356
FF-45	PL		=	229	367
FF-46	PL		=	236	377
FF-47	PL		=	271	434
FF-48	PL		=	244	391
FF-49	PL		=	737	1179
K-1	10	8.25	=	83	132
K-2	10	8.25	=	83	132
K-3	17.25	8.25	=	142	228
K-4	17.25	8.25	=	142	228
				12384	19803
LOADING FACTOR				1.60	

SECOND & THIRD FLOOR AREA					
SHOP NO.	WIDTH	LENGTH		BUILT UP AREA	SUPER AREA
	(FT.)	(FT.)		SQ. FT.	SQ. FT.
ROOM-01	14.08	25	=	352	482
ROOM-02	11.33	25	=	283	388
ROOM-03	11.33	25	=	283	388
ROOM-04	13.5	25	=	338	462
ROOM-05	13.5	25	=	338	462
ROOM-06	12.91	25	=	323	442
ROOM-07	12.58	25	=	315	431
ROOM-08	12.08	25	=	302	414
ROOM-09	11.33	25	=	283	388
ROOM-10	11.33	25	=	283	388
ROOM-11	13.5	25	=	338	462
ROOM-12	13.5	25	=	338	462
ROOM-12A	12.91	25	=	323	442
ROOM-14	12.41	28.83	=	358	490
ROOM-15	13.41	28.83	=	387	530
ROOM-16	12.41	28.83	=	358	490
ROOM-17	27.75	28.83	=	800	1096
ROOM-18	27.41	28.83	=	790	1083
ROOM-19	12.41	28.83	=	358	490
ROOM-20	12.41	28.83	=	358	490
ROOM-21	12.41	28.83	=	358	490
ROOM-22	12.91	25	=	323	442
ROOM-23	13.5	25	=	338	462
ROOM-24	13.5	25	=	338	462
ROOM-25	11.33	25	=	283	388
ROOM-26	11.33	25	=	283	388
ROOM-27	12.08	25	=	302	414
ROOM-28	12.58	25	=	315	431
ROOM-29	12.91	25.58	=	330	452
ROOM-30	13.5	25.58	=	345	473
ROOM-31	13.5	25.58	=	345	473
ROOM-32	11.33	25.58	=	290	397
ROOM-33	11.33	25.58	=	290	397
ROOM-34	12.08	25.58	=	309	423
ROOM-35	12.58	25.58	=	322	441
ROOM-36	PL		=	424	581
ROOM-37	PL		=	449	615
ROOM-38	PL		=	336	460
ROOM-39	PL		=	287	394
STAFF ROOM	10.5	14.66	=	154	211
HOUSE KEEPING	15.75	17.25	=	272	372
				14197	19449
LOADING FACTOR				1.37	

**PHOENIX
SQUARE**