

3 Bedroom Apartment / Flat for sale in Piramal Aranya, Byculla, Mumbai

3.6 crores



It's A India's Tallest Brand New 72 Storey Tower In Bycala

Piramal Aranya, Rani Baug, Byculla, Mumbai - 400011 (M..

- Project/Society: [Piramal Aranya](#)
- Area: 1063 SqFeet ▾
- Bathrooms: Four
- Total Floors: More than 20
- Furnished: Furnished
- Price: 36,000,000
- Rate: 33,866 per SqFeet **-20%**
- Age Of Construction: Under Construction
- Possession: Within 1 Year
- Bedrooms: Three
- Floor: Eighteenth
- Facing: North
- Transaction: New Property

Description

It's a Brand New Tallest Tower In India 72 Story
Boking open is Easy EOI option Start from Rs. 3 lakh only
Carpet 1063 sqft
Deck area open to Sky
View open to sky , Sea, Rani Baug
India's Tallest Tower in Mumbai With 72 Story
All Luxurious Amenities.
Book for appointment
Note : Assured Exclusive Gift from Developer side worth Rs. 75 Lakh upto for only few Customer For per Booking by EOI

When you call, don't forget to mention that you found this ad on PropertyWala.com.

Features

General

- Power Back-up ■ Centrally Air Conditioned
- Room AC ■ Lifts ■ High Speed Internet ■ Wi-Fi

Lot

- Private Terrace ■ Balcony ■ Private Garden
- Basement ■ Corner Location ■ Park Facing

Exterior

- Reserved Parking ■ Visitor Parking
- Independent Garage ■ Servant Quarter

Maintenance

- Maintenance Staff ■ Water Supply / Storage
- RO System ■ Water Softner ■ Boring / Tube-well
- Rain Water Harvesting ■ Waste Disposal

Location

* Location may be approximate

Landmarks

Advertiser Details

SK Real Estate
SKREAL ESTATE
Manager

Andheri West, Mumbai
mob: 7700056773
tel: 8928505563
mail: sk.realestate.mumbai@gmail.com
w.propertywala.com/sk-real-estate-mumbai



Scan QR code to get the contact info on your mobile

[View all properties by SK Real Estate](#)

Pictures



Bedroom



Dinning Room



Drawing Room



Bathroom



Bathroom



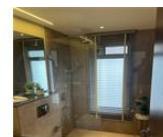
Bedroom



Bathroom



Bedroom



Bathroom



Drawing Room



Dinning Room



Bathroom

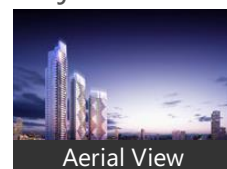


Aerial View



Bedroom

Project Pictures



Aerial View



Bird's Eyeview

* These pictures are of the project and might not represent the property

ATM/Bank/Exchange

Idbi Bank (<0.5km), Union Bank of India (<0.5km), Canara Bank (<0.5km), Punjab National Bank-Byculla (<0.5km... The Satara Sahakari Bank-Ghodapde... Punjab National Bank (<0.5km), Canara Bank-Byculla (<0.5km), Axis Bank (<1km), Bharat Bank (<1km), Union Bank of India-S V V S College C. WESTERN UNION (<1km), Mumbai Bank ATM (<1km), DCB Bank (<1km)

Restaurant & Shops

Bismillah Store (<0.5km), The Navbharat Co Co op Society (<0... Mahavir Provision Stores (<0.5km), Jay Bharat Cloth Center (<0.5km), Milan General Stores (<0.5km), Novelty General Stores (<0.5km), Noorani Milk Centre (<0.5km), Poonam Tea Center (<0.5km), Vishal General Stores (<0.5km), Grill N Roll (<0.5km), Sha Lalaji Lakhghir (<0.5km), Sha Morarji Khaji (<0.5km), Rajesh Store (<0.5km), Bajinath General Store (<0.5km), Sha Nenshi Meghraj (<0.5km), Shivkrupa Dhanya Bhandar (<0.5km), KB Gupta Chana Stores (<0.5km), Om Sai Rai Laundry (<1km), Shri Kapresvar Kupa General Store (<... Sadanand Maratha Dhanya Bhandar ... Lucky General Stores (<1km), Murji Dharshi and Company (<1km), Rahul General Stores (<1km), Sha Bhanji Kheraz (<1km), Sagar (<1km), Mahadev Novelty (<1km), R K General Store (<1km), Shree Siddhivinayak General Stores (<1km), Premjis General Stores (<1km), Mahi Electrical Hardwell Tools & Gen.. Joy Stores (<1km), Modern Mode (<1km), Jain (<1km), Manisha Tobacco and General Stores.. Ghodapdeo Nagarik Sahakari Grahak...

Hostel

Aleemi Darbar Hotel (<0.5km)

Public Transport

Masina Hospital-Rustum Bauq (<0.5... Mustafa Bazzar/Savalya Tandel Chow.. Mafatlal Mill (<0.5km), [more..](#)

Locality Reviews

Byculla, Mumbai

Byculla is in central Mumbai , accessible by all local passenger transport system, has schools, colleges, hospitals and various other amenities in the close proximity.

Pros:

- *In the heart of Mumbai*

Cons:

- *Does not have any cons*

Posted: Nov 25, 2020 by Mustansir Rangwala

Byculla is a centrally located place in Mumbai. There are many famous bakeries in this area like Regal bakery. Byculla has that yester year feel to it with its British era designed buildings. The Gloria church and high school is also very famous in Byculla. Byculla once housed the famous Mafatlal mills and Khatau mills. All in all it is a great place to be in.

Pros:

- *Beautifully designed buildings*
- *Gloria church*
- *Its central location*

Cons:

- *Congested*

Posted: Jun 10, 2013 by [Kumar M \(Turf Consultants\)](#)

Byculla, Mumbai is rated 7 out of 10 based on 2 user reviews.

Disclaimer: The reviews are opinions of PropertyWala.com members, and not of PropertyWala.com.

Explore

[Similar Properties](#)

[Properties in Byculla, Mumbai](#)

[Projects in Mumbai](#)

[Brokers in Mumbai](#)

More Information

Report a problem with this listing

Is this property no longer available or has incorrect information?

[Report it!](#)

Disclaimer: All information is provided by advertisers and should be verified independently before entering into any transaction. You may visit the relevant RERA website of your state to verify the details of this property. PropertyWala.com is only an advertising platform to help connect buyers and sellers and is not a party to any transactions, nor shall be responsible or liable to resolve any disputes between them.