

3 Bedroom Apartment / Flat for rent in South Bopal, Ahmedabad

24,500



3bed Flat For Rent South Bopal

South Bopal, South Bopal, Ahmedabad - 380051 (Gujara..

- Area: 1390 SqFeet ▾
- Bedrooms: Three
- Total Floors: Three
- Facing: East
- Furnished: Semi Furnished
- Lease Period: 11 Months
- Monthly Rent: 24,500
- Rate: 18 per SqFeet +5%
- Age Of Construction: 7 Years
- Available: Immediate/Ready to move

Advertiser Details

Jay Mataji Estate
Dilip Panchal
 Broker
 Ghuma, Ahmedabad
 mob: 8401271857
 tel:
 mail: jaymatajestate51@gmail.com
 www.propertywala.com/jay-mataji-estate

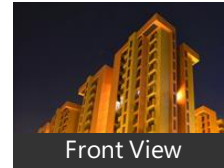


Scan QR code to get the contact info on your mobile
[View all properties by Jay Mataji Estate](#)

Description

3bed flat for rent
South bopal
Sun south park
Nr sobo centre
2 wardrobe
Sofa
New colour paint

Pictures



Front View

When you call, don't forget to mention that you saw this ad on PropertyWala.com.

Features

General

- Power Back-up
- Lifts

Interior

- Modular Kitchen

Maintenance

- Water Supply / Storage
- Boring / Tube-well

Security

- Security Guards

Exterior

- Visitor Parking
- Servant Quarter

Location

* Location may be approximate

Landmarks

Restaurant & Shops

Vinayaka Kerala Store (<0.5km), Ramdev Emporium (<0.5km), Hamara Bazar (<0.5km), Ambika Fiber (<0.5km), Maruti Fruits (<0.5km), ANITA GARMENT (<0.5km), Dhruv Oil Traders (<0.5km), Maruti Grain Store (<0.5km), Payal (<0.5km), PEHNAVA (<0.5km), Shubhkirti Saree (<0.5km), Shreeji Selection (<0.5km), Maa Shakti Selection (<0.5km), Rock on (<0.5km), Shri Ramdev Gruh Udyog (<0.5km), Shri Krishna Readymade (<0.5km), Men, Red Blue (<0.5km), Zara General Store (<0.5km), Prince Fashion (<0.5km), Patanjali Swadeshi Bazar (<0.5km), Pavan Kirana Stores (<0.5km), Khodiyar Parlour & Provision Store (<0.5km), Rani Selection (<0.5km), Saubhagya Selection (<0.5km), Pari Selection (<0.5km), Yogee (<0.5km), Murlidhar Provision Store (<0.5km), Satyam Dairy & Provision Store (<0.5km), Vasant Veggies (<0.5km), Dev Marketing (<0.5km), Glee (<0.5km), Quick Treat (<0.5km), MAGIC FASHION (<0.5km), Jay Shivshakti Provision Store & Dair... Sakhli Saheli (<1km)

Hospitals & Clinics

Pujan Child Hospital (<0.5km), Pujan Child Hospital-ER (<0.5km), Krishna Homeopathic Clinic (<0.5km..

Biocin Healthcare (<0.5km), Sakar Diagnostics (<0.5km), VIP Diagnostics (<0.5km), Dr Nilesh J Patel (<0.5km), Chashmish Eye Wear Studio (<0.5km... Blue Eyes Opticals (<0.5km), Dr Suresh B Chauhan (<0.5km), Childhood Hospital (<0.5km), Childhood Hospital-ER (<0.5km), Adarsh Hospital (<0.5km), Adarsh Hospital-ER (<0.5km), Dr. Rajesh J. Shah Clinic (<0.5km), Yogeshwar Clinic (<0.5km), Supratech Micropath Laboratory (<0... Arya Vaidya Sala Kottakkal (<0.5km), Sashwat Eye Hospital (<0.5km), Dr Gurpreet Bagga (<0.5km), Dr Bhuva (<0.5km), Dr Ashish Joshi (<0.5km), Patanjali Health Center (<0.5km), Aashirwad Maternity Hospital (<0.5k... Aatman Hospital (<0.5km), Astha Hospital (<0.5km), Dr Mahendra K Shah (<0.5km), Shape in Slimming Center (<0.5km), Manav Hospital (<0.5km), Parth Dental Clinic (<0.5km), Manthan A Raval Advocate (<0.5km), Chashmish Eyewear Studio (<0.5km)

ATM/Bank/Exchange

[more...](#)

Locality Reviews

South Bopal, Ahmedabad

It is pose area for living famous Sobo Center,high rises multi storey apartment in this area. All amenities of daily its very near to its,school bus stop, hotel,restaurant and ect...,

Pros:

- *Newly construct residential unit for living with natural sources*

Cons:

- *Now a day mostly people want to live in this place so some cluster area developing*

Posted: May 29, 2019 by [Sejal Mathuria](#)

Well developed area. Peaceful environment with all the facilities available nearby.

Pros:

- *Well developed area.*
- *Peaceful environment.*

Posted: May 28, 2019 by [Ragini Mehta \(Prime Deal\)](#)

Huge locality , wide market place , peaceful environment , anyone can develop business of any type . complete area for all class of people.

Pros:

- *Good area to live and establish consumer business*

Cons:

- *Competitive market and little clumsy*

Posted: May 13, 2019 by [Pankitkumar Shah](#)

South Bopal is fastest growing area in Ahmedabad. It has all basic necessity right from restaurants, super market, banks, club, multi specialty hospital, highway nearby to cut traffic.

Pros:

- *Between city centre and changodar industrial area*

Cons:

- *Approx 20 kms from railway station & 25 kms from airport*

Posted: May 6, 2016 by [Rakesh Shah](#)

South Bopal is a very fast developing locality. Rapid demand due to development in Sanand as auto hub, many Class One officers serving these industries are residents of South Bopal. Ahmedabad's top developers are actively developing this area.

Pros:

- *Cosmopolitan culture*
- *Close proximity of Prahladnagar*
- *Very peaceful and pollution free area*

Cons:

- *Markets yet to be operational.*
- *Little far from City Center*

Posted: Sep 15, 2013 by [Mukesh Patel \(Remax India\)](#)

One of the best area in the western part of the city. Properly planned and well developed. Very ideal for residential purpose.

Pros:

- *Fresh air and good environment.*
- *Properly planned and well developed.*

Cons:

- *Little far from the city center.*

Posted: May 1, 2013 by [Purvash Thakkar \(Star Eatate Management\)](#)

South Bopal, Ahmedabad is rated 6 out of 10 based on 6 user reviews.

Disclaimer: The reviews are opinions of PropertyWala.com members, and not of PropertyWala.com.

Explore

[Similar Properties](#)

[Properties in South Bopal, Ahmedabad](#)

[Projects in Ahmedabad](#)

[Brokers in Ahmedabad](#)

More Information

Report a problem with this listing

Is this property no longer available or has incorrect information?

[Report it!](#)

Disclaimer: All information is provided by advertisers and should be verified independently before entering into any transaction. You may visit the relevant RERA website of your state to verify the details of this property. PropertyWala.com is only an advertising platform to help connect buyers and sellers and is not a party to any transactions, nor shall be responsible or liable to resolve any disputes between them.