

Triguna Palm Grove - Yelahanka, Bangalore



Guarantee a hassle-free lifestyle

Triguna Palm Grove by Triguna Projects Pvt. Ltd. at Agrahara Badavane, Yelahanka in Bangalore offers residential project that host 2 & 3 Bhk apartment in various sizes.

- Project ID: J465841189
- Builder: Triguna Projects Pvt. Ltd.
- Location: Triguna Palm Grove, Agrahara Badavane, Yelahanka, Bangalore (Karnataka)
- Completion Date: Dec, 2018
- Status: Started

Description

Triguna Palm Grove Apartments, at Agrahara Badavane, Yelahanka in Bangalore offers spacious 2 bhk and 3 bhk apartment in the size ranges in between 806 to 1266 sqft. The amenities in Triguna Palm Grove include Landscaped Garden, CCTV Cameras, Gymnasium, Play Area, Lift, Jogging Track etc. Location of Triguna Palm Grove Apartments is ideal for those who are looking to invest in property in Bangalore with many schools, colleges, hospitals, recreational areas, parks and many other facilities nearby Yelahanka.

RERA No : -PRM/KA/RERA/1251/309/PR/171021/001320

Amenities:

- 24 X 7 Security
- Children's play area
- Gymnasium
- Intercom
- Jogging Track
- Landscaped Gardens
- Lift Available
- Party Hall
- Power Backup
- Rain Water Harvesting
- Spa/Sauna/Steam
- Vaastu Compliant

Triguna Projects Pvt Ltd is a well-known Indian real estate company in India and is well known for its superior real estate services. The company continues to grow rapidly with its product diversity across various sectors and continues to be committed to quality and customer satisfaction. The builders have received instant recognition and have been able to deliver its projects with excellence and commitment to modern cutting edge design and technology. The company has won numerous awards and tied ups with best in class associates, has a group of experienced project management consultants and world renowned architects. All these factors combined ensures better execution and delivery of projects.

Features

Luxury Features

- Power Back-up ■ Lifts ■ High Speed Internet

Lot Features

- Balcony

Recreation

- Swimming Pool ■ Park ■ Fitness Centre / GYM
- Club / Community Center

Security Features

- Security Guards ■ Intercom Facility

Exterior Features

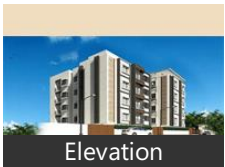
- Reserved Parking

Maintenance

- Maintenance Staff ■ Water Supply / Storage
- Rain Water Harvesting

Gallery

Pictures



Elevation



Front View

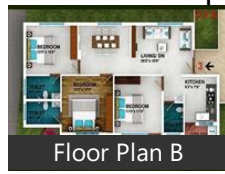
Floor Plans



Master Plan



Floor Plan A



Floor Plan B



Floor Plan C



Floor Plan D



Location Map

Location

Landmarks

Hotel

Royal Orchid Resort & Convention C... Chairman, The Royale Senate-Hebbal (<10km), Ramanashree California Resort-Dodd.. Godrej Woodsman Estate (<7km), Liwa Hotel (<5km), Roseline Suites (<11km), The Sanctum Suites Bangalore (<12k... Maple Inn-Kempapura (<7km), Howard Johnson-Nagavara (<7km), MSR Hotel & Spa Bangalore (<13km), Hotel Nandhana Vista (<13km), Country Inn & Suites By Radisson Be... Howard Johnson by Wyndham Beng... Arra Suites (<10km)

Public Transport

Yelahanka Railway Station (<4km), Hebbal (<9km), Hebbal Railway Station (<9km), Bel Circle (<12km), Banaswadi Railway Station (<13km), Nagavara (<8km), Mekhri Circle-NB (<13km), Bmtc Kalyannagar Bus Station (<10k... Nagashettyhalli B M T C Bus Station ... B M T C Bus Station-Sree Chowdeshw. Kodigehalli Railway Station (<8km), Vishwanath Nagenahalli-EB (<8km)

Recreation

Manyata Embassy Business Park (<6k.. Lumbini Gardens (<8km), Palace Ground (<14km), Snow City (<14km), PVR Cinemas-MSR Elements Mall (<... Decathlon Sports India (<12km), Pushpanjali-Sultanpalya (<11km), Naatyakalakshetra Academy for Fine... Hennur Banaswadi Cosmopolitan Cl... Fun World-Entrance 1 ■■■■■■ ... Mukunda Theatre (<14km)

Shopping Centre

MSR Regaliaa Elements Mall (<7km), Esteem Mall (<8km)

Business & Services

Kirloskar Business Park (<7km), Rail Wheel Factory-Main Gate (<6km... Bharat Electronics-Main Gate ■■■■!...

Building

Orchid Woods (<6km), Sobha Chrysanthemum (<5km), Krishna Northwoods (<2km), Karle Town Centre (<7km), SLS Symphony (<5km), Vivek Marvel (<3km), Kemp Fort (<11km), Sobha City ■■■■■■ (<3km), Adithya Celestial (<5km), Prestige Wellington Park (<12km), R & S Riviera (<5km), R and S Riviera Bangalore (<5km), Railway Wheel Factory West Colony ... Eco Narasimha (<10km), Crystal Enclave (<10km), Nagarjuna Meadows Phase-1 (<8km), Vamshi Residency (<8km), Sobha Petunia (<8km), VDB Celadon (<3km), Manito Shelters (<11km), Sobha Emerald-2 (<3km), Oceanus Greendale (<13km), Kalathoor House (<3km), Hoppers Stop (<4km)

ATM/Bank/Exchange

City Union Bank-Yelahanka New Tow. State Bank of India (<6km), Canara Bank (<7km), Bank of Baroda-Defence Colony (<7k.. Uco Bank (<7km), South Indian Bank (<10km), State Bank of India-R A C P C Banasa... Karnataka Bank-Banaswadi (<12km)

Restaurant & Shops

Reliance Fresh (<5km), Five Star Chicken (<5km), Bda Complex (<14km), Patels Inn (<11km), Lulu Value Mart (<6km)

Hospitals & Clinics

Columbia Asia Hospital-ER (<7km), Yelahanka Govt Hospital (<4km), MS Ramaiah Memorial Hospital-ER (...
Dr Ambedkar Medical College Hosp ... Sham, DR. Agarwal, MS Ramaiah Memorial Hospital (<12..
cloudnine clinic (<6km), Orthopaedic Clinic (<12km), Specialist Hospital (<12km), Dr Lal PathLabs (<7km),
M S Ramaiah Medical Hosp (<12km), Dr B R Ambedkar Medical & Hospita... M S Ramaiah Hospital (<12km),
Chaitanya Hospital (<11km), Manipal Ankur (<9km), Shushrusha Nursing Home (<4km)

Accommodation

Club Cabana (<8km)

* All distances are approximate

Properties

Triguna Palm Grove News

Expert Reviews on Triguna Palm Grove

Explore

[Projects in Bangalore](#)

[Brokers in Bangalore](#)

More Information

Report a problem with this listing

Is any information on this page outdated or incorrect?

[Report it!](#)

Disclaimer: All information is provided by advertisers, including builders/agents/owners, or collected from publicly available sources and may not be verified under RERA. Any information provided on this website, including facts and figures, should be verified independently, including via the relevant RERA website, before entering into any transaction. PropertyWala.com is only an advertising platform to help connect buyers and sellers and is not a party to any transaction, nor shall be responsible or liable to resolve any disputes between them.

[Home](#) » [Bangalore Real Estate](#) » [Projects in Bangalore](#) » [Triguna Palm Grove - Yelahanka, Bangalore](#)