

## 4 Bedroom Apartment / Flat for rent in Anand Lok, New Delhi

1.7 lakh



### Ready To Move 4BHK Builder Floor Apartment In Anand Lok

Diplomatic Area Chanakyapuri Malcha Marg, Anand Lok..

- Area: 400 SqYards ▾
- Bedrooms: Four
- Bathrooms: Five
- Monthly Rent: 170,000
- Rate: 425 per SqYard **-25%**
- Available: Immediate/Ready to move

### Advertiser Details



**Sanjeet Sharma**  
Property Agent / Broker / Consultant  
Vasant Vihar, New Delhi

mob: 9810069114  
tel: 11-46541532  
mail:  
www.sharmaestates.in



Scan QR code to get the contact info on your mobile

[View all properties by Sharma Estates](#)

### Description

Nicely Built-up Second Floor with Terrace Garden on very wide road , Quiet Location North-East Facing , Having 4 Bedrooms with attached Bath Rooms , powder room , Separate Drawing/ Dining , Lobby , Store , Servant Quarter , Modular Kitchen , 2 Reserved Car Parking , Italian Marble Flooring , Building made by top builder. Rich Specifications , Back Service Lane , Close to Club and Market.

Landmarks:

City Center: 0.2 kms; Bank: 0.2 kms; Near to Malcha Marg Market and all Embassies Area.; Railway Station: 5 kms; Airport: 9 kms; Hospital: 2 kms; Metro: 2 kms; School: 0.5 kms

Please mention that you saw this ad on PropertyWala.com when you call.

### Features

Other features

- Age of Construction: Less than 5 years
- Freehold ownership
- 4 balconies
- Power Back Up
- Lift
- Rain Water Harvesting
- Club House
- Swimming Pool
- Park
- Reserved Parking
- Security
- Water Storage
- Private Terrace/ Garden
- Vaastu Compliant
- Service/Goods Lift
- Air Conditioned
- Visitor Parking
- Intercom Facility
- Waste Disposal
- Cafeteria/Food Court
- Piped Gas
- Ready to Move
- Puja Room,Store,Servant Room
- Semi-Furnished
- Pool Facing,Garden/Park Facing
- East facing

### Location

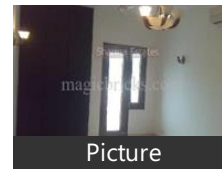
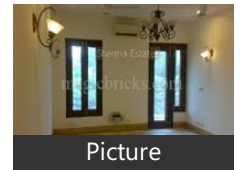
\* Location may be approximate

### Landmarks

Nearby Localities

[Uday Park](#), [Neeti Bagh](#), [Asiad Village](#), [Gulmohar Park](#), [Siri Fort](#), [Gautam Nagar](#), [South Ext-II](#), [Yusuf Sarai](#), [Green Park Extn](#), [Andrews Ganj](#), [Uday Park](#), [Neeti Bagh](#), [Asiad Village](#), [Gulmohar Park](#), [Siri Fort](#), [Gautam Nagar](#), [Shahpur Jat](#), [South Ext-II](#), [Yusuf Sarai](#), [Green Park Extn](#), [Uday Park](#), [Neeti Bagh](#), [Asiad Village](#), [Gulmohar Park](#), [Siri Fort](#), [Gautam Nagar](#), [Shahpur Jat](#), [South Ext-II](#), [Yusuf Sarai](#), [Green Park Extn](#), [Uday Park](#), [Neeti Bagh](#), [Asiad Village](#), [Gulmohar Park](#), [Siri Fort](#), [Gautam Nagar](#), [Shahpur Jat](#), [South Ext-II](#), [Yusuf Sarai](#), [Green Park Extn](#), [Uday Park](#), [Neeti Bagh](#), [Asiad Village](#), [Gulmohar Park](#), [Siri Fort](#), [Shahpur Jat](#), [Sahapuriat Village](#), [South Ext-II](#), [Yusuf Sarai](#), [Green Park](#), [Uday Park](#), [Neeti Bagh](#), [Asiad Village](#), [Gulmohar Park](#), [Siri Fort](#), [Shahpur Jat](#), [Sahapuriat Village](#), [South Ext-II](#), [Yusuf Sarai](#), [Green Park](#), [Uday Park](#), [Neeti Bagh](#), [Asiad Village](#), [Gulmohar Park](#), [Siri Fort](#), [Gautam Nagar](#), [Shahpur Jat](#), [South Ext-II](#), [Yusuf Sarai](#), [Green Park](#), [Uday Park](#), [Neeti Bagh](#), [Asiad Village](#), [Gulmohar Park](#), [Siri Fort](#), [Shahpur Jat](#), [South Ext-II](#), [Yusuf Sarai](#), [Green Park](#), [South Ext-I](#), [Uday Park](#), [Neeti Bagh](#), [Asiad Village](#), [Gulmohar Park](#), [Siri Fort](#), [South Ext-II](#), [Yusuf Sarai](#), [Green Park](#), [South Ext-I](#),

### Pictures



[Panchsheel Park](#), [Uday Park](#), [Neeti Bagh](#), [Asiad Village](#), [Gulmohar Park](#), [Siri Fort](#), [South Ext-II](#), [Yusuf Sarai](#), [Green Park Extn](#), [Green Park](#), [South Ext-I](#), [Uday Park](#), [Neeti Bagh](#), [Asiad Village](#), [Gulmohar Park](#), [Siri Fort](#), [South Ext-II](#), [Yusuf Sarai](#), [Green Park Extn](#), [Green Park](#), [South Ext-I](#), [Uday Park](#), [Neeti Bagh](#), [Asiad Village](#), [Gulmohar Park](#), [Siri Fort](#), [South Ext-II](#), [Yusuf Sarai](#), [Green Park Extn](#), [Green Park](#), [South Ext-I](#), [Uday Park](#), [Neeti Bagh](#), [Asiad Village](#), [Gulmohar Park](#), [Siri Fort](#), [South Ext-II](#), [Yusuf Sarai](#), [Green Park](#), [South Ext-I](#), [Panchsheel Park](#), [Uday Park](#), [Neeti Bagh](#), [Asiad Village](#), [Gulmohar Park](#), [Siri Fort](#), [South Ext-II](#), [Yusuf Sarai](#), [Green Park](#), [South Ext-I](#), [Panchsheel Park](#), [Uday Park](#), [Neeti Bagh](#), [Asiad Village](#), [Gulmohar Park](#), [Siri Fort](#), [South Ext-II](#), [Yusuf Sarai](#), [Panchsheel Park](#), [Uday Park](#), [Neeti Bagh](#), [Asiad Village](#), [Gulmohar Park](#), [Siri Fort](#), [South Ext-I](#), [Gautam Nagar](#), [South Ext-II](#), [Yusuf Sarai](#), [Green Park](#), [South Ext-I](#), [Uday Park](#), [Neeti Bagh](#), [Asiad Village](#), [Gulmohar Park](#), [Siri Fort](#), [Gautam Nagar](#), [South Ext-II](#), [Yusuf Sarai](#), [Green Park](#), [South Ext-I](#)

\* All distances are approximate

## Explore

[Similar Properties](#)

[Properties in Anand Lok, New Delhi](#)

[Projects in New Delhi](#)

[Brokers in New Delhi](#)

## More Information

## Report a problem with this listing

Is this property no longer available or has incorrect information?

[Report it!](#)

**Disclaimer:** All information is provided by advertisers and should be verified independently before entering into any transaction. You may visit the relevant RERA website of your state to verify the details of this property. PropertyWala.com is only an advertising platform to help connect buyers and sellers and is not a party to any transactions, nor shall be responsible or liable to resolve any disputes between them.