

2 Bedroom Apartment / Flat for sale in Arihant Anmol, Badlapur East, Tha.. 37.75 lakhs



2 Bedroom Apartment For Sale In Thane

Arihant Anmol, Badlapur East, Thane - 421504 (Maharash.)

- Project/Society: [Arihant Anmol](#)
- Area: 956 SqFeet ▾
- Bedrooms: Two
- Floor: Ninth
- Total Floors: Fifteen
- Facing: East
- Furnished: Unfurnished
- Transaction: New Property
- Price: 3,775,000
- Rate: 3,949 per SqFeet
- Age Of Construction: Under Construction
- Possession: Within 6 Months

Advertiser Details

Ritu Developers
Nirmala Dharmesh Patel
Business Development Manager

Badlapur East, Thane
mob: 9561007755
tel: 8237746376
mail: ritu@propertywala.com
www.propertywala.com/ritu-developers

Scan QR code to get the contact info on your mobile

[View all properties by Ritu Developers](#)

Description

(Stilt +15 Storeyed Tower Residential

Project Approved by KBMC)

RERA NO* : - P51700027339

Project Features: -

- 6.5 Acre Land Parcel
- Township of 17 Towers
- Residential Buildings, Lavish 2 Bhk Apartment.
- Well Connected to Central Railway Station
- 5 Mins Drive to Badlapur Station
- 2 Mins Drive from the Upcoming Metro Station,
- Hospitals are in Nearby Vicinity
- Schools are in Neighbourhood
- 2 Mins Drive to Patel R-Mart
- Close to Petrol Pumps
- Well Connected to Highways.
- Apartments Constructed with Minimum Wasted

Lifestyle Amenities

- Clubhouse
- Gymnasium
- Steam Room
- Children Play Area
- Cctv System
- Library cum study area
- Indoor Games
- Party Lawn with Garden
- PARKING FREE

When you call, please mention that you saw this ad on PropertyWala.

Features

General

- Power Back-up
- Lifts
- Wi-Fi

Lot

- Balcony
- Private Garden

Exterior

- Reserved Parking

Maintenance

- Maintenance Staff
- Water Supply / Storage
- RO System
- Water Softner
- Boring / Tube-well
- Rain Water Harvesting
- Waste Disposal

Location

Security

- Security Guards
- Electronic Security
- Fire Alarm

Interior

- Granite Flooring

Recreation

- Swimming Pool
- Park
- Club / Community Center

Pictures



Gymnasium



Garden



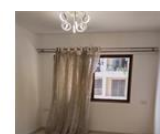
Main Entrance



Front View



Swimming Pool



Drawing Room

Project Pictures



Front View



Elevation



Swimming Pool



The Club

* These pictures are of the project and might not represent the property

Project Floor Plans



Master Plan



Location Map

* These floor plans are of the project and might not represent the property

* Location may be approximate

Locality Reviews

Badlapur East, Thane

Well developed area. All public facilities are available. Good connectivity

Pros:

- *Excellent climate*
- *Well developed area*

Cons:

- *Floods during rainy season*

Posted: Mar 13, 2019 by [Pranjal Patil \(Shelter Properties\)](#)

Badlapur East is a premium location having school, college, market near by beauty with good natural surrounding.

Pros:

- *Good Nature and premium location*

Posted: Mar 7, 2016 by Suhas Kharat

Badlapur is a city in Thane district it encompasses the old villages of Badlapur, Kulgaon, Manjarli, Belavali, Katrap, and many other small villages. The region surrounding Badlapur is mountainous. The Ulhas River flows between Badlapur and Kulgaon. Floods frequently occur due to Badlapur's geographical location near this mountain runoff. Badlapur and Kulgaon are connected by two bridges over the river. The town is well connected to the Mumbai Pune Expressway. NMMT buses are available from Badlapur to Vashi and CBD Belapur/Turbhe Bus Station.

Badlapur has auto rickshaw services to reach destinations within Badlapur city. One can find State Transport buses near Badlapur railway station (west). Badlapur is a terminal station for many trains, local to Mumbai, of the Central Railway zone. The majority of the population is Hindu, along with a substantial Muslim community. There are many temples, mosques, and churches in the town. Recently the city has made headlines in the news due to the steepest hikes in real estate values in the locality. Many noted personalities, including filmstars, have shown interest in buying properties here in the vicinity of the scenic Ulhas River valley. Badlapur developing rapidly with new launched projects like Godrej Vihaa by Godrej Properties, projects by Arihant, Tharwani group, Raj Group, Elite Group and etc.

Pros:

- *Developing Rapidly*
- *Well Connected Now*
- *Excellent Climate & Availability of Basic Things.*

Cons:

- *Sometimes Floods occur in rainy season*

Posted: Sep 29, 2015 by [Sandeep Patil \(Space Orbeat Properties\)](#)

Badlapur East, Thane is rated 7 out of 10 based on 3 user reviews.

Disclaimer: The reviews are opinions of PropertyWala.com members, and not of PropertyWala.com.

Explore

[Similar Properties](#)

[Properties in Badlapur East, Thane](#)

[Projects in Thane](#)

[Brokers in Thane](#)

More Information

Report a problem with this listing

Is this property no longer available or has incorrect information?

[Report it!](#)

Disclaimer: All information is provided by advertisers and should be verified independently before entering into any transaction. You may visit the relevant RERA website of your state to verify the details of this property. PropertyWala.com is only an advertising platform to help connect buyers and sellers and is not a party to any transactions, nor shall be responsible or liable to resolve any disputes between them.