

## Eldeco Green Meadows - Sector Pi, Greater No.



### Residential Apartments

Eldeco Green Meadows is one of the popular Residential Developments in Greater Noida neighborhood of Delhi-NCR. It is among the Completed Projects of Eldeco Infrastructure And Properties Ltd.

- Project ID : J672119042
- Builder: The Eldeco group
- Properties: Apartments / Flats
- Location: Sector Pi, Sector Pi, Greater Noida (Uttar Pradesh)
- Completion Date: Oct, 2008
- Status: Completed

### Description

**The Eldeco group** has been at the forefront of real estate development in North India since 1975. The group has pioneered organized sector real estate development in this region. The main companies in the group are \* Eldeco Housing and Industries Ltd. (EHIL) : Incorporated in 1985, EHIL has held an uninterrupted market leadership position in most major towns of UP, most notably Lucknow and Kanpur. EHIL is listed on the Bombay Stock Exchange and has had an uninterrupted dividend paying record since inception. \* Eldeco Infrastructure and Properties Ltd. (EIPL) : Incorporated in 2000 to professionally undertake projects in the NCR.

**Eldeco Green Meadows** is one of the popular Residential Developments in Greater Noida neighborhood of Delhi-NCR. It is among the Completed Projects of Eldeco Infrastructure And Properties Ltd. The landscape is beautiful with spacious Houses.

#### Details:

Location : Sector Pi, Greater Noida  
Project Type : Residential Group Housing  
Scheme Type : Low and High Rise Design  
Accommodation : 2,3 and 4 bedroom apartments

#### Features:

- A combination of low (Ground + 3 floors) and high rise design concept, Eldeco Green Meadows offers a choice of premium 2,3 and 4 bedroom apartments along with lawns on the ground floor and roof terrace with top floors.
- ICL ( Integrated Comfort Living ) concept: Eldeco Green Meadows offers you, for the first time, a pioneering concept in comfort living aptly named as ICL.
- It offers you the facility of a convenient shopping complex Eldeco Arcadia, a full-fledged club with swimming pool and extensive greenery all integrated into the project.

#### Rich specifications:

- Excellent space planning : Large and airy rooms, spacious kitchen, wide windows and wardrobe spaces, maximum space utilization, ample parking space.
- Lots of greenery. Theme parks namely Japanese Garden, Mughal Garden, Rotary Park.
- Immaculate round-the-clock security-guards on patrol, CCTV on main gate and strategic points.
- 100% power backup.

### Features

#### Luxury Features

- Power Back-up ■ RO System ■ Water Softner

#### Interior Features

- Woodwork ■ Modular Kitchen

#### Maintenance

- Maintenance Staff ■ Water Supply / Storage
- Rain Water Harvesting

#### Security Features

- Security Guards ■ Electronic Security
- Intercom Facility ■ Fire Alarm

#### Recreation

- Park ■ Fitness Centre / GYM

#### Land Features

- Feng Shui / Vaastu Compliant
- Club / Community Center ■ Adjacent to Main Road
- Park/Green Belt Facing ■ Water Connection
- Electric Connection ■ Close to Hospital
- Close to School ■ Close to Shopping Center/Mall

### Gallery

#### Pictures



Elevation



Aerial View



Bird Eye View



Front View



Park View



Main Entrance



Central Mughal

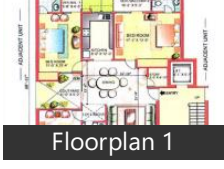


Wide Angle View

## Floor Plans



Location Map



Floorplan 1



Floor Plan

## Documents



Application Form

## Location

## Landmarks

### Transportation

Railway Station Dadri (<7km), Taxi Stand (<4km), Auto Cum Taxi Stand (<4km)

### Restaurants & Clubs

Heritage Club (<3km), Club Beta li (<5km), Shiva Sports (<5km), The Steller Gymkhana Club (<5km), Club Ansals Golf Links (<6km)

\* All distances are approximate

## Properties

Type	Area	Possession	Price *
2BHK Apartment / Flat	1515 SqFeet	-	₹ 57 lakhs
2BHK Apartment / Flat	1525 SqFeet	-	₹ 70 lakhs
3BHK Apartment / Flat	1330 SqFeet	-	₹ 67 lakhs

3BHK Apartment / Flat	1400 SqFeet	-	₹ 1 crore
3BHK Apartment / Flat	1660 SqFeet	-	₹ 76 lakhs
3BHK Apartment / Flat	1840 SqFeet	-	₹ 75 lakhs
3BHK Apartment / Flat	1840 SqFeet	-	₹ 65 lakhs
3BHK Apartment / Flat	1870 SqFeet	-	₹ 66 lakhs
3BHK Apartment / Flat	1875 SqFeet	-	₹ 70 lakhs
3BHK Apartment / Flat	3420 SqFeet	-	₹ 96 lakhs
3BHK Apartment / Flat	1400 SqMeters	-	₹ 99 lakhs

\* Data has been collected from publicly available sources and may not be up to date.

## Properties available in 'Eldeco Green Meadows'

### 3 Bedroom Flat for rent in Eldeco Green Meadows, Sector P... 13,000



1700 SqFeet Apartment @ Rs.8/SqFeet

ID: P28078560 — Posted: May 23 by [Sunny Angral](#)

Rent Eldeco green meadows (Eldeco Green Meadows)

The best thing in this society is each floor only 2 apartments and cross ventilation windows are both side open, prime location near jp green and pari chownk near by famous hospital like yadharth, sharda and kailash hospital easy to access the road for Noida expressway, 130 meter ...

[more details](#)

### 3 Bedroom Flat for sale in Eldeco Green Meadows, Sector P... 90 lakhs



128 SqMeters Apartment @ Rs.70312/SqMeter

ID: P51414414 — Posted: Yesterday by Amreesh Saxena

3BHK(FF) / (Lowrise) / Corner (3 side open) / East facing / Prime Society (Eldeco Green...

Its a Ready to Move 3BHK + Center Lobby / Corner (3 side open / East facing / Lawn facing / Perfect Vastu / 24x7 water, security, power / Fully Furnished (Wood Work & AC Fitted) / CCTV / Temple / Shopping Arcadia / Gym / Swimming pool / Golf Carts / Lots of open space / 80% occupancy...

[more details](#)

### 3 Bedroom Flat for rent in Eldeco Green Meadows, Sector P... 12,000



1765 SqFeet Apartment @ Rs.7/SqFeet

ID: P50610831 — Posted: Jul 15 by Kritika Krishna

3 BHK Apartment/Flat for Rent in a prime residential development by Eldeco Green Me..

1765 Sq Feet 3 BHK Apartment/Flat for Rent at Eldeco Riviera in Sector Pi Greater Noida, Greater Noida for Rs 12,000 monthly rental. \*First Floor \*Semi Furnished \* Reserved Car Parking\* Eldeco Riviera which is situated in Eldeco Green Meadows is a prime residential development by ...

[more details](#)

### 2 Bedroom Flat for sale in Eldeco Green Meadows, Sector P... 57 lakhs



1515 SqFeet Apartment @ Rs.3762/SqFeet

ID: P24039171 — Posted: Jun 19 by [Sudhir Somani](#)

1515 Sq.Ft. 2 BHK+Study room in Eldeco Green Meadows @ 57 lacs (Eldeco Green Mea..

1515 Sq.Ft. 2 BHK + Study room ready to move in flat in Eldeco Green Meadows, sector-Pi, Greater Noida is available for SALE @ 57 lacs on lower floor. Prime location near to Metro station new wood work.

[more details](#)

### 3 Bedroom Flat for rent in Eldeco Green Meadows, Eldeco R... 13,000



1840 SqFeet Apartment @ Rs.7/SqFeet

ID: P83868321 — Posted: Jun 17 by [Naresh Rawal](#)

3bhk flat for rent in eldeco green meadows greater noida gb nagar (Eldeco Green Mea...

Open, prime location near jp green and pari chownk near by famous hospital like yadharth, sharda and kailash hospital easy to access the road for Noida expressway, 130 meter highway for noida, ghaziabad and for agra yamuna expressway We also deal in other societies like awho, Ats green ...

[more details](#)

## Eldeco Green Meadows News

## Expert Reviews on Eldeco Green Meadows

Explore

[Projects in Greater Noida](#)

[Brokers in Greater Noida](#)

More Information

Report a problem with this listing

Is any information on this page outdated or incorrect?

[Report it!](#)

**Disclaimer:** All information is provided by builders, advertisers, or collected from publicly available sources and may not be verified as per RERA guidelines. Any information provided on this website, including facts and figures, should be verified independently before entering into any transaction. PropertyWala.com is only an advertising platform to help connect buyers and sellers and is not a party to any transaction, nor shall be responsible or liable to resolve any disputes between them.

[PropertyWala.com](#) » [Greater Noida Real Estate](#) » [Projects in Greater Noida](#) » [Eldeco Green Meadows - Sector Pi, Greater Noida](#)