

## Raya City - Panvel, Navi Mumbai



mega township project in Panvel.

Raya City, a mega township project of Shree Raya Group, offers apartments in various sizes - 1 - BR, 1 - BHK, 1.5 - BHK, 2 - BHK and 2 - BHK Duplex. The project is located Off Matheran Road, Koproli, New Panvel.

- Project ID : J119068321
- Builder: Suresh Kamthe and Anjali Tikone
- Properties: Apartments / Flats, Residential Plots / Lands
- Location: Raya City, Off Matheran Road, Panvel, Navi Mumbai - 410206 (Maharashtra)
- Completion Date: Dec, 2016
- Status: Started

### Description

**Raya City** is a mega township project that is ideally located slightly away from the city, assuring fresher air and less pollution. The township project is perfectly set in the lap of Green Nature, that surrounds your dream home from every side. While you are sure to breath fresher air, you are assured of better comfort and convenience as the project has all basic amenities and facilities. Raya City provides every requirement at your disposal. It is fully set over 25 acres of land and have various commercial and mall developments inside the project.

#### Apartment Options

- 1 - BR
- 1 - BHK
- 1.5 - BHK
- 2 - BHK
- 2 - BHK Duplex

#### Amenities

- Lush Green Pleasant Atmosphere
- 12m External And 9m Internal Wide Roads
- Complex Bus Facility To And From Panvel Station
- Mall With Multiplex Facility
- Restaurant And Fast Food Joints
- Commercial Complexes
- Joggers Park
- Huge Play Ground
- Yoga And Meditation Center
- Hi-Tech Gym
- Nana Nani Park
- Children Play Area
- Library
- Park
- Club House
- Badminton Court
- Swimming Pool
- Reputed School And College Within The Premises
- Hospital With Hi-Tech Facilities
- Banking Facility
- 24 Hrs Security
- CCTV Camera

Anjali Tikone founded the **Shree Raya group** in the year 2010. The group, since then, has been in the forefront of real estate development arena of Panvel, where the group developed its first project. Raya City is one of its masterpieces. The group is now an ISO 9001:2008 Certified real estate firm. Shree Raya Group takes utmost care while developing projects, assuring that they are developed with quality.

### Features

#### Luxury Features

- Power Back-up ■ Lifts ■ Water Softner

#### Lot Features

- Balcony ■ Private Garden ■ Park Facing

#### Interior

- Granite Flooring

#### Recreation

- Swimming Pool ■ Park ■ Fitness Centre / GYM
- Club / Community Center

#### Security Features

- Security Guards ■ Electronic Security
- Intercom Facility ■ Fire Alarm

#### Interior Features

- Modular Kitchen ■ Feng Shui / Vaastu Compliant

#### Exterior Features

- Reserved Parking ■ Visitor Parking

#### Maintenance

- Maintenance Staff ■ Water Supply / Storage
- Boring / Tube-well ■ Rain Water Harvesting
- Waste Disposal

**Commercial Features**

- Cafeteria / Food Court ■ ATM ■ Service / Goods Lift

**Land Features**

- Society Boundary Wall ■ Club / Community Center
- Adjacent to Main Road ■ Park/Green Belt Facing
- Water Connection ■ Electric Connection
- Close to Hospital ■ Close to School
- Close to Shopping Center/Mall

**General**

- Power Back-up ■ Lifts

**Other features**

- Bus Facility From Station To Township

**Gallery**

**Pictures**



Side View



Elevation View



Aerial View

**Floor Plans**



Site Plan(A)



Site Plan(B)



Site Plan(C)



Site Plan(D)



Site Plan(E)



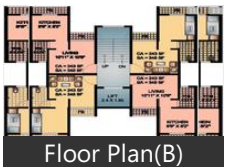
Site Plan(F)



Site Plan(G)



Floor Plan(A)



Floor Plan(B)



Floor Plan(C)



Floor Plan(D)



Floor Plan(E)

TYPE	1 BHK	2 BHK	2.5 BHK	3 BHK	3BHK+2A
Build-up area	348	526	671	821	676
Rate (Per sq.ft)	3000	3200	3200	3200	3200
Carpet area	244	377	476	576	476
Cost of Flat	113,960	1,70,400	2,17,200	2,67,200	2,17,200
Stamp duty - 3%	3,419	5,112	6,516	8,112	6,516
Registration - 6%	6,838	10,224	13,032	16,224	13,032
Service Tax**@3.05%	3,372	5,226	6,590	8,164	6,512
TOTAL**	127,589	180,872	223,438	281,720	223,438

Pricing



Location Map

**Documents**



Brochure

**Location**

## Landmarks

### Transportation

New Panvel Bridge (<1km), Garden Hotel (<1km), Khanda Colony (<1km), Thana Naka (<1km), Panvel Railway Station East Bus Stop... N.M.M.T Bus Stand (<3km), Panvel Railway Station (<2km), Panvel Junction (<2km), Mansarovar Railway Station (<5km), Royalerealtors (<2km), Railway Rickshaw Stand (<2km), Belapur Central Business District Rail... Chhatrapati Shivaji International Airp... Juhu Airport (<44km), Kharghar-Taxi Stand (<9km), Kharghar Taxi Stand (<9km), Sector 3/2 Corner Rickshaw Stand (<... AUTO STAND (<2km), Hiranandani Taxi Stand (<9km), ganpati taxi stand (<10km), Seawood Taxi Stand (<14km), Taxi/ Cab Stand (<14km)

### Markets & Shopping Malls

Govind Gardens Shopping Mall (<1k... Panvel Nagar Parishad Market (<1km.. D Mart (<2km), Prajapati Cascade (<3km), Vishwas Market (<2km), Posh Boutique (<2km), K-Mall (<2km), Geonet IT Mall (<1km), Food Market (<2km)

### Banks & ATMs

Axis Bank (<1km), Bank Of Maharashtra (<1km), Syndicate Bank (<1km), Bank Of India ATM (<0.5km), HDFC Bank (<2km), Bank Of India (<1km), Saraswat Bank (<1km), ICICI Bank (<1km), Union Bank of India (<1km), IDBI Bank ATM (<1km), IDBI Bank (<2km)

### Hotels & Guest Houses

Guest House (<3km), Panvel Paying Guest (<2km), Shadan Student Hostel (<10km), Paying Guest In Koparkhairane (<10k... CIDCO Guest House (<12km), Prem Villa (<11km), CIDCO GuestHouse (<12km), Hotel Centre Point (<18km), Hotel Panvel Palace (<1km), Peace Park Hotel (<1km), Payal Hotel (<1km), Hotel Venkat Presidency (<5km), Hotel Sirka (<1km), Garden Hotel (<1km), Hotel Sapna Gomantaak (<2km)

### Restaurants & Clubs

Royal Cosmo Health Club (<1km), Panvel Photographic Club (<1km), Rotary club New Panvel blood bank ... Rotary Club of Panvel Midtown (<2k... Pan Thunders Motorcycling Club (<2.. Rotary Club of India Blood Bank (<2k.. Your Fitness Club (<9km), Padmashree Dr. D.Y.Patil Medical Co... Sri Restuarant (<0.5km), Hotel Panvel Palace (<1km), Waghej Pav Bhaji (<1km), Khandesh Fine Dine (<3km), McDonald, Shiv Sagar Veg Restaurant (<1km), Jyoti (<1km), PanchaRatna Hotel (<2km)

### Movie Halls

Rupali Cinema (<2km), Apna Cinema (<3km), Cineraj Theatre (<3km), Rupali Magic Cinema (<2km), Big Cinema, Cine Raj Cinema (<3km), Big Cinemas (<8km), Fame Raghuleela (<20km)

### Parks

Peace Park Hotel (<1km), Municipal Garden (<1km), MCCH Society Ground (<1km), The Park (<11km), Gadget World (<3km), Neelkanth Park C.H.S (<3km), Deshpande Garden (<3km), Gini Park (<3km)

### Hospitals & Clinics

Alok Clinic (<1km), Dr. Oza, Dr. Gandhi, Microscope Enhanced Dentistry at D... R P Tamhankar (<1km), Gune Hospital (<1km), JK ENT Clinic (<1km), Pet Clinic (<1km), Dr. Oza, Patil Hospital (<1km), Sahasrabudhe Hospital (<0.5km), Ashvini Hospital (<0.5km), Life Line Hospital (<1km), Sehrandev Hospital (<1km), Neelkanth Darshan (<1km)

### Offices

Aarkstore Enterprise (<1km), Panvel City Post Office (<1km), Civil Court (<1km), Tehsil Office (<1km), Panvel RTO (<1km), LIC Office (<1km), New Panvel Post office (<3km)

### Schools & Colleges

Pillai Institute of Information Techno... Dr K M Vasudevan Pillai Campus (<3... Changu Kana Thakur College (<2km), St Josephs High School (<2km), A. C. Patil College of Engineering (<9.. SIES College of Management Studies... DY Patil Stadium (<14km), Gurukul School (<0.5km), Changu Kana Thakur High School (<... Konkan Education Society, Levana Technologies (<2km), HOME (<1km), Mahatma School of Academics and ...

\* All distances are approximate

## Properties

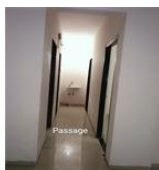
Type	Area	Possession	Price *
2BHK Apartment / Flat	916 SqFeet	Immediate/Ready to move	₹ 44 lakhs
Residential Plot / Land	1612 SqFeet	-	₹ 4.75 lakhs

\* Data has been collected from publicly available sources and may not be up to date.

### Properties available in 'Raya City'

#### 2 Bedroom Flat for sale in Raya City, Panvel-Matheran Road..

44 lakhs



916 SqFeet Apartment @ Rs.4803/SqFeet

ID: P9974780 — Posted: 6 days ago by Rashmi D

2 bhk in good gated society (Raya City)

2 bhk in good gated society less used house in good gated society, silent area, safety door & grills for all balconies, [more details](#)

## Raya City News

- **Mumbai surpasses New Delhi in air pollution**  
*29 days ago* - The report also highlighted the critical levels of nitrogen oxide in cities, like Navi Mumbai and Thane. Mumbai: While the national capital has earned the infamous title of being the most polluted cit... [more](#)
- **Hope to start Navi-Mumbai, Jewar Airport by 2022: Jayant Sinha**  
*30 days ago* - The government has adopt new airports as the focal point for development of aviation infrastructure, with ministry of civil aviation aggressively pushing for Navi Mumbai ... Group subsidiary Mumbai In... [more](#)
- **Reliance Realty to build fintech centre in Navi Mumbai**  
*Feb 11* - granted approval to Reliance Realty for development of the Smart Fintech Centre at its Dhirubhai Ambani Knowledge City in Navi Mumbai, under the Government of Maharashtra's new Fintech Policy," Relian... [more](#)
- **CIDCO lottery 2019 for 1100 homes in Navi Mumbai: Draw soon; check lottery.cidcoindia.com**  
*29 days ago* - CIDCO lottery 2019: The City and Industrial Development Corporation (CIDCO) ... These houses are located in Navi Mumbai's Ghansoli, and Kharghar Taloja, Kalamboli, and Dronagiri near Uran. Registration... [more](#)
- **Maharastra: Reliance Realty to Develop State's First Smart Fintech Centre in Navi mumbai**  
*Feb 11* - RCom said the Maharashtra government and the Maharashtra Industrial Development Corporation (MIDC) have approved building the centre at the Dhirubhai Ambani Knowledge City in Navi Mumbai. According to ... [more](#)
- **Mumbai's property market witnesses marginal growth**  
*28 days ago* - The MMR regions includes the Mumbai and it's peripheral locations like Thane, Navi Mumbai, Kalyan ... are so high that the people are unable to afford the houses in Mumbai city. The majority of sale i... [more](#)
- **Bankrupt RCom arm to build a fintech centre in Navi Mumbai**  
*Feb 11* - Mumbai: Bankrupt Reliance Communications on Monday said it will develop a 132-acre land parcel on the outskirts of the city as a fintech centre. The 132-acre land parcel called Dhirubhai Ambani Knowle... [more](#)
- **Navi Mumbai: CIDCO razes houses of PAPs for airport**  
*29 days ago* - Navi Mumbai: The City and Industrial Development Corporation of Maharashtra (CIDCO) is working on a war-footing to complete the first phase of the international airport in Navi Mumbai by December this ... [more](#)
- **Residents claim 2 persons landed with parachute in Navi Mumbai**  
*Feb 5* - Navi Mumbai is a planned city off the west coast in the Konkan region of Maharashtra. In September 2016, panic gripped Uran area in Navi Mumbai when some people claimed that they had spotted a group o... [more](#)
- **Thane traffic cops get hi-tech e-challan devices**  
*28 days ago* - After Mumbai, Nagpur and Navi Mumbai, the e-challan system was launched in Thane ... fines but to enable discipline and transparency in the system. As part of smart city initiative, there are proposal... [more](#)
- **2-hour block for Navi Mumbai Metro work**  
*29 days ago* - The City and Industrial Development Corporation (CIDCO) ... The truss was fabricated in Haryana and transported to Navi Mumbai in segments. "It was then assembled at a height of 15 metres in a nearby a... [more](#)
- **CIDCO lottery 2019 Mumbai: Draw for 1100 homes begin | Check lottery.cidcoindia.com for details**  
*29 days ago* - The City and Industrial Development Corporation (CIDCO) ... These houses are located in Navi Mumbai's Ghansoli, Kharghar, Taloja, Kalamboli and Dronagiri near Uran. The houses are reserved for Economic... [more](#)

## Expert Reviews on Raya City

Explore

[Projects in Navi Mumbai](#)

[Brokers in Navi Mumbai](#)

More Information

Report a problem with this listing

Is any information on this page outdated or incorrect?

[Report it!](#)

**Disclaimer:** All information is provided by builders, advertisers, or collected from publicly available sources and may not be verified as per RERA guidelines. Any information provided on this website, including facts and figures, should be verified independently before entering into any transaction. PropertyWala.com is only an advertising platform to help connect buyers and sellers and is not a party to any transaction, nor shall be responsible or liable to resolve any disputes between them.