

4 Bedroom Apartment / Flat for rent in Shanti Niketan, New Delhi

5 lakhs



★ Featured

Ready To Move Builder Floor In , New Delhi

For Rent - Top Location Brand New Builder Floor Apartm.

- Area: 510.97 SqMeters ▼
- Bedrooms: Four
- Bathrooms: Five
- Monthly Rent: 500,000
- Rate: 979 per SqMeter +5%
- Available: Immediate/Ready to move

Advertiser Details



Sanjeet Sharma
Property Agent / Broker / Consultant
Vasant Vihar, New Delhi

mob: 9810069114
tel: 11-46541532
mail:
www.sharmaestates.in



Scan QR code to get the contact info on your mobile
[View all properties by Sharma Estates](#)

Description

Newly built builder floor apartment with 5 star construction on first floor on very wide road , park facing, having 4 spacious bedrooms with attached bath rooms , 1 powder room , separate drawing/ dining room , master bedroom with wooden flooring , lobby , store , servant quarter , fully equipped siemens modular kitchen with dish washer and washing machine , separate gate for entry and car parking on stilt , italian marble flooring , rich specifications.

For more details about this apartment please contact. Brokers please excuse....

For more information regarding independent house/ bungalows, new builder floor apartments in other localities as given below then please contact :

Shanti niketan, westend, anand niketan, vasant vihar, golf links, jorbagh, chanakyapuri, prithviraj road, aurangzeb road, connaught place, sunder nagar, panchsheel park, hauzkhas enclave, sda, defence colony etc...

Please mention that you saw this ad on PropertyWala.com when you call.

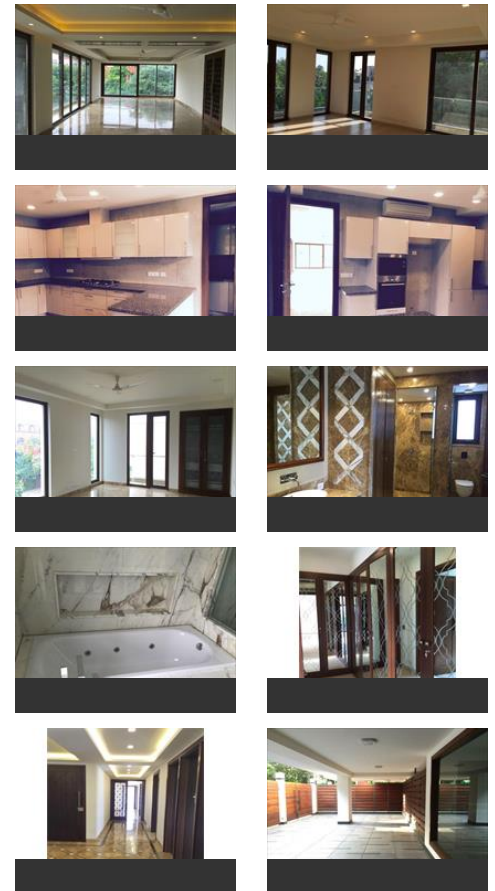
Features

Other features

- Builtup Area: 510.97 sq.m.
- Floor: 1st of 4 Floors
- North-East Facing
- Balconies: More than 3
- Immediate possession
- 0-1 Year Old Property
- Additional Rooms: Pooja Room, Study Room, Servant Room
- Marble Flooring
- Furnishing: Semifurnished
- Gated Community
- Reserved Parking

Location

Pictures



* Location may be approximate

Landmarks

Nearby Localities

[Anand Niketan](#), [West End](#), [Chanakyapuri](#), [Vasant Vihar](#), [Bhikaji Cama Place](#), [Munirka](#), [Safdarjung Enclave](#), [Malcha Marg](#), [Anand Niketan](#), [West End](#), [Satya Niketan](#), [Som Vihar](#), [Vasant Enclave](#), [Chanakyapuri](#), [Vasant Vihar](#), [Bhikaji Cama Place](#), [Munirka](#), [Safdarjung Enclave](#), [Anand Niketan](#), [West End](#), [Satya Niketan](#), [Som Vihar](#), [Chanakyapuri](#), [Vasant Vihar](#), [Bhikaji Cama Place](#), [Munirka](#), [Safdarjung Enclave](#), [Malcha Marg](#), [Anand Niketan](#), [West End](#), [Satya Niketan](#), [Chanakyapuri](#), [Vasant Vihar](#), [Bhikaji Cama Place](#), [Munirka](#), [Safdarjung Enclave](#), [Malcha Marg](#), [Anand Niketan](#), [West End](#), [Chanakyapuri](#), [Vasant Vihar](#), [Bhikaji Cama Place](#), [Munirka](#), [Safdarjung Enclave](#), [Malcha Marg](#), [Anand Niketan](#), [West End](#), [Chanakyapuri](#), [Vasant Vihar](#), [Bhikaji Cama Place](#), [Munirka](#), [Safdarjung Enclave](#), [Malcha Marg](#), [Anand Niketan](#), [West End](#), [Chanakyapuri](#), [Vasant Vihar](#)

