

## Salarpuria Sattva Kings Domain - Indira Nagar ...



### Sprawling luxury enclave of magnificent villas

Salarpuria Sattva Kings Domain by Salarpuria Sattva Group at the very prime location of Rahat Bagh, Indiranagar Stage 3 in Bangalore offers residential project that host villas in various sizes.

- Project ID: J581211894
- Builder: Salarpuria Sattva Group
- Location: Salarpuria Sattva Kings Domain, Rahat Bagh, Indira Nagar Stage 3, Bangalore - 560038 (Karnataka)
- Completion Date: Jan, 2022
- Status: Completed

## Description

**Salarpuria Sattva Kings Domain** by Salarpuria Sattva Group at the very prime location of Rahat Bagh, Indiranagar Stage 3 in Bangalore offers residential project that host spacious villas in the size ranges between 3900 to 4500 sqft. Well-appointed with all the modern amenities, all the abodes ensure that you live a hassle free life. The project is strategically located and has all the basic utilities are nearby.

### Amenities :

- Landscaping & Tree Planting
- Mini Theatre
- Car Parking
- Intercom
- Club House
- Children's Play Area
- 24x7 Security
- Multipurpose Room
- Power Backup
- Cycling & Jogging Track
- Gymnasium
- Swimming Pool
- Lift

**Salarpuria Sattva** is one of the leading property development, management and consulting companies in India. Established in 1986, the company has successfully delivered many prestigious projects. With the main focus on residential and commercial projects, the group has been able to prove its mettle in the real estate market due to its continuous endeavor to deliver better than what it had achieved already.

## Features

### Luxury Features

- Power Back-up ■ High Speed Internet

### Lot Features

- Balcony

### Recreation

- Swimming Pool ■ Park ■ Fitness Centre / GYM
- Club / Community Center

### Security Features

- Security Guards ■ Intercom Facility

### Exterior Features

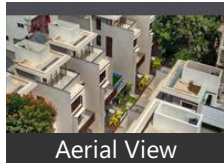
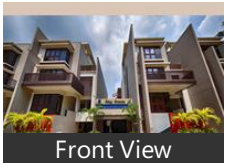
- Reserved Parking ■ Visitor Parking

### Maintenance

- Maintenance Staff ■ Rain Water Harvesting

## Gallery

### Pictures



## Floor Plans



Master Plan



Floor Plan A



Floor Plan B



Location Map

## Location

## Landmarks

### Restaurant & Shops

Vapour Bangalore (<5km), Xtreme Sports Bar (<4km), Tiger Trail (<6km), Big Pitcher (<5km), Loft 38 (<4km), Arbor Brewing Company (<8km), Sapna Book House (<3km), Being Human - Phoenix Market City ... More (<4km), NH 8 (<4km), Corner House Ice Creams (<4km), Big Bazaar (<0.5km), Koshy, Portland Steakhouse & Cafe (<8km), Brand Factory (<8km), G K Vale (<4km), The Biere Club (<10km), M K Retail (<4km), Reliance Fresh (<3km), Manyavar (<4km), Corner House Ice Creams Kasturi Na... Oye Amritsar (<3km), SONY Center (<4km), Kalamandir (<8km), Glen, Akshaya Aura (<13km), Sucare Demo Center-Samsung (<4km)

### Other features

Bangalore (<5km), Bangalore (<2km)

### Building

RMZ Infinity (<0.5km), Gitanjali Apartments (<3km), Orion East Residency (<5km), Kemp Fort (<6km), Aishwarya Lake View Residency-Main. Purva Riviera (<9km), Krishna Ikona (<5km)

### Business & Services

Bagmane Tech Park (<2km), Emc2 (<5km), Omega Healthcare Management Ser... Prestige Atrium (<9km), Raheja Towers (<8km), Graphite India (<8km)

### Hotel

Taj MG Road Bengaluru (<7km), Hyatt Centric MG Road Bangalore (<... Aqua (<7km), Monarch Hotel (<9km), Radisson Blu (<9km), The Paul Bangalore (<7km), Pride Hotel Bangalore (<10km), Lemon Tree Hotel Whitefield (<9km), Nandhana Vista (<5km), Evoma (<9km), Citrus Hotels (<10km), The Lalit Ashok (<12km), Octave Hotel (<9km), JW Marriott Hotel (<10km), JW Marriott Hotel Bengaluru (<10km... The Leela Palace-Bengaluru (<5km), Shangri-La-Bengaluru (<11km), Howard Johnson-Bengaluru Hebbal ... The Chevron Hotel (<10km), JP Cordial (<13km), Nahar Heritage Hotel-St Mark, Taj West End (<12km), Goldfinch Hotel (<12km), Hotel Raj Comforts (<6km), Oyo Flagship 506 Marathahalli Innov... Zone by The Park Infantry (<9km), Adarsh Hamilton (<10km)

### Public Transport

KR Puram Railway (<3km), Cv Raman Nagar (<1km), Banaswadi Railway Station (<5km), KR Puram (<5km), Hal Main Gate-EB (<5km), Swami Vivekananda Road (<3km), OLD BANGALORE INTERNATIONAL ... Beml Main Gate (<3km), Marathahalli Ring Road Bridge (<8km. Shivajinagar-SB (<9km), Marthahalli Bridge & Ring (<8km), Cantonment Railway Station (<10km)

### Shopping Centre

Gopalan Signature Mall (<0.5km), Gopalan Grand Mall (<1km), Orion East Mall (<5km), Soulspace Arena (<5km), Lido Mall (<7km), Bangalore Central Mall (<8km)

### Hospitals & Clinics

Manipal Hospital (<5km), Navashakthi Nethralaya (<5km), Chaya Pharmacy (<3km), LOTUS Diagnostic Cent (<3km), Specialist Hospital (<5km)

### Recreation

Cubbon Park (<10km), PVR Cinema (<5km), Mukunda Theatre (<4km), DECATHLON (<6km), Citi Nest (<5km)

### ATM/Bank/Exchange

Karnataka Bank (<2km), Indian Bank-Indira Nagar Bangalore ... DCB Bank-Mahatma Gandhi Road (<.. Kotak Mahindra Bank (<3km)

### Accommodation

Classic Inn (<5km)

\* All distances are approximate

## Properties

### Salarpuria Sattva Kings Domain News

- **How Flipspaces Is Propelling Its Technology Suite To Redefine The Future Of Commercial Interior Designing**

*24 days ago* - The first was to make their technology suite more comprehensive to facilitate internal efficiency and scale in commercial interior design and build domain. What is indeed notable is the fact that ... [more](#)

- **AMAZON SELECT**

*27 days ago* - The Salarpuria-Sattva Group, one of the largest real estate developers ... the e-tail giant has been mostly operating under the radar in 70-odd pin codes in Bangalore. [more](#)

- **JP MORGAN CAMPUS HYDERABAD**

*Sep 13* - In addition, there were 27 offers in the technology consulting domain with PricewaterhouseCoopers making ... 28 Jan, 2020, 06.16 PM IST Salarpuria Sattva buys plot in Hyderabad IT hub for Rs 650 crore ... [more](#)

### Expert Reviews on Salarpuria Sattva Kings Domain

Explore

[Projects in Bangalore](#)

[Brokers in Bangalore](#)

More Information

Report a problem with this listing

Is any information on this page outdated or incorrect?

[Report it!](#)

**Disclaimer:** All information is provided by advertisers, including builders/agents/owners, or collected from publicly available sources and may not be verified under RERA. Any information provided on this website, including facts and figures, should be verified independently, including via the relevant RERA website, before entering into any transaction. PropertyWala.com is only an advertising platform to help connect buyers and sellers and is not a party to any transaction, nor shall be responsible or liable to resolve any disputes between them.

[Home](#) » [Bangalore Real Estate](#) » [Projects in Bangalore](#) » [Salarpuria Sattva Kings Domain - Indira Nagar Stage 3, Bangalore](#)