

Salarpuria Sattva Casa Crescent - Benson Town..



Epitome of Luxury

Salarpuria Sattva Casa Crescent by Salarpuria Sattva Group at the very prime location of Benson Town in Bangalore offers residential project that host 4 bhk apartments in various sizes.

- Project ID: J394810118
- Builder: Salarpuria Sattva Group
- Location: Salarpuria Sattva Casa Crescent, Byadarahalli, Benson Town, Bangalore - 560046 (Karnataka)
- Completion Date: Jan, 2018
- Status: Completed

Description

Salarpuria Sattva Casa Crescent by Salarpuria Sattva Group located at Benson Town Bangalore is a project that is well planned. Spread over a vast area of 1 Acre in 3633 - 5178 sq. ft. the project is a well-established and encompasses over 5 units with 4 BHK apartments. The project is equipped with the amenities such as - swimming pool, gymnasium, piped gas and visitor parking with the near by connectivity school, hospitals, water connection etc.

Amenities:

- Power Back Up
- Swimming Pool
- Lift
- Security
- Visitor Parking
- Gymnasium
- Piped Gas
- Air Conditioned
- Internet/Wi-Fi Connectivity
- Central AC
- Earth quake resistant
- Located in the Heart of city
- Fire Fighting Equipments

Salarpuria Sattva Group Founded in 1986 with the primary focus of developing high-quality constructions. The Salarpuria Group has strived to achieve excellence in the field of Construction, Architecture, Real Estate, Construction Management, Facility and Infrastructure Management and Finance. Since its establishment the group has given the best value and quality to clients.

Features

Luxury Features

- Power Back-up
- Centrally Air Conditioned
- Lifts
- RO System

Lot Features

- Balcony

Recreation

- Swimming Pool
- Park
- Fitness Centre / GYM
- Club / Community Center

Land Features

- Clear Title
- Society Boundary Wall
- Club / Community Center
- Water Connection
- Close to Hospital
- Close to School

Security Features

- Security Guards
- Intercom Facility
- Fire Alarm

Exterior Features

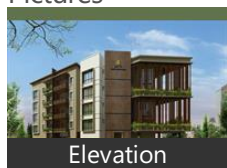
- Reserved Parking
- Visitor Parking

Maintenance

- Maintenance Staff
- Water Supply / Storage
- Rain Water Harvesting

Gallery

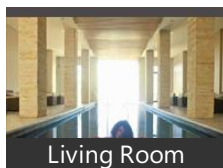
Pictures



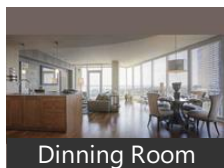
Elevation



Living Room



Living Room



Dinning Room

Floor Plans



Master Plan



Location Map



Floor Plan

Location

Landmarks

Hotel

The Lalit Ashok (<3km), Shangri-La-Bangaluru (<2km), Citrus Hotels (<2km), Monarch Hotel (<4km), JP Cordial (<5km), Goldfinch Hotel (<4km), Taj West End (<4km), The Chevron Hotel (<3km), Taj MG Road Bengaluru (<5km), JW Marriott Hotel (<4km), Pride Hotel Bangalore (<5km), JW Marriott Hotel Bengaluru (<4km), Aqua (<5km), Hyatt Centric MG Road Bangalore (<... Dr. Rajkumar International (<5km), Hotel Dew Drops (<5km), Hotel Paraag (<3km), Nahar Heritage Hotel-St Mark, Zone by The Park Infantry (<3km), Fortune Select JP Cosmos (<2km), Adarsh Hamilton (<6km), Jayamaharal Palace Hotel (<1km), SNT Comforts-Majestic (<6km), Purple LOTUS (<4km), Le MERIDIEN (<3km), Sheraton (<7km), The Signature Inn (<6km), OyoRooms (<5km), Arafa Inn (<5km), Howard Johnson-Bangaluru Hebbal ... Nandhana Vista (<6km), The Grand Magrath Hotel (<5km), CoralTree by Goldfinch (<3km), Citadel Hotel (<5km), Monarch Luxur (<3km), Jayamaharal Palace Heritage Hotel (<1... The Paul Bangalore (<9km), The President Hotel (<11km), Hotel Bangalore International (<4km), La Marvella (<10km)

Recreation

Cubbon Park (<4km), Bangalore Palace (<1km), Snow City (<2km), Palace Ground-Vasanthanagar (<2k... Fun Cinemas (<2km), Visvesvaraya Industrial & Technolog... Fun World-Entrance 1 (<2km), Kanteerava Stadium (<5km), Fame Shankarnagar (<4km), Jayamaharal Park (<1km), Sadashivanagar Club (<3km)

Restaurant & Shops

Arbor Brewing Company (<5km), Akshaya Aura (<5km), Koshy, Vapour Bangalore (<8km), The Biere Club (<5km), Xtreme Sports Bar (<8km), Portland Steakhouse & Cafe (<5km), Mantri Square Mall Office (<5km), Sapna Book House (<5km), Tiger Trail (<9km), Loft 38 (<8km), Mysore Saree Udyog. (<3km), Church Street Social (<4km), Big Pitcher (<9km), Empire Restaurant (<2km), Brand Factory (<4km)

Public Transport

Cantonment Railway Station (<1km), Shivajinagar-SB (<3km), Banaswadi Railway Station (<4km), Majestic (<6km), Krantiveera Sangolli Rayanna Bengal... Bengaluru City Junction Railway Stat... Mahatma Gandhi Road (<4km), Mekhri Circle-NB (<4km)

Educational Facility

Alliance Française (<2km)

Business & Services

Prestige Atrium (<3km), Vidhana Soudha (<3km), Karnataka Chitrakala Parishath (<3km. Safina Plaza (<3km), National Gallery of Modern Art (<2km Raheja Towers (<5km), Brigade Gateway (<7km)

Shopping Centre

Ub City (<5km), Matri Mall (<5km), Bangalore Central Mall (<4km), Grand Sigma Mall (<2km), Orion East Mall (<5km), Lido Mall (<5km), Sukh Sagar Mall (<5km)

ATM/Bank/Exchange

DCB Bank-Mahatma Gandhi Road (<...

Accommodation

Treebo Mayflower Hayz Boutique (<...

Hospitals & Clinics

Bhagwan Mahaveer Jain Hospital (<2.. Fortis Hospital (<2km), Homeocare International (<5km), Vikram Hospital (<2km), Hosmat Hospital (<5km)

Building

Rajashree Manor (<2km)

Landmark/Attraction

St. Mary, St Patrick

* All distances are approximate

Properties

Salarpuria Sattva Casa Crescent News

Expert Reviews on Salarpuria Sattva Casa Crescent

Explore

[Projects in Bangalore](#)

[Brokers in Bangalore](#)

More Information

Report a problem with this listing

Is any information on this page outdated or incorrect?

[Report it!](#)

Disclaimer: All information is provided by advertisers, including builders/agents/owners, or collected from publicly available sources and may not be verified under RERA. Any information provided on this website, including facts and figures, should be verified independently, including via the relevant RERA website, before entering into any transaction. PropertyWala.com is only an advertising platform to help connect buyers and sellers and is not a party to any transaction, nor shall be responsible or liable to resolve any disputes between them.

[Home](#) » [Bangalore Real Estate](#) » [Projects in Bangalore](#) » [Salarpuria Sattva Casa Crescent - Benson Town, Bangalore](#)