

Office Space for rent in Green Park, New Delhi

3.5 lakhs



Office Space In Green Park Extension, New Delhi

South Delhi, Green Park, New Delhi - 110016 (Delhi)

- Area: 3500 SqFeet
- Bathrooms: Three
- Monthly Rent: 350,000
- Rate: 100 per SqFeet -5%
- Available: Immediate/Ready to move

Advertiser Details

Sanjeet Sharma
Property Agent / Broker / Consultant
Vasant Vihar, New Delhi

mob: 9810069114
tel: 11-46541532
mail: www.sharmaestates.in



Scan QR code to get the contact info on your mobile

[View all properties by Sharma Estates](#)

Description

Green park extension, Situated at central-South delhi, An fully furnished office space with fully air-Conditioned and fully power back-Up, Having 3,500 sq. Ft. It can be split into two parts as well and modification can be also done in the furnishing in the premises as per client requirements. Its very near to green park metro station on aurbindo marg. Office situated in the hearth of south delhi this space available for immediate rent and ready to move in, The building is well equipped with all modern basic amenities like lift, Power back up, Fire safety, Security etc....

When you contact, don't forget to mention that you found this ad on PropertyWala.com.

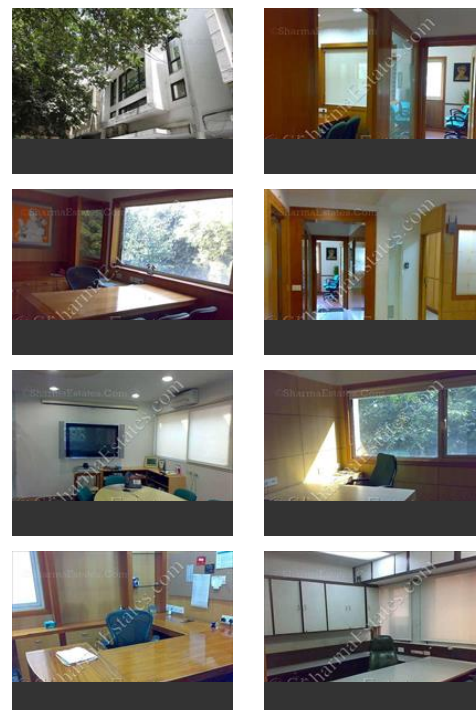
Features

Other features

- Builtup Area: 3500 Sq.Ft.
- Immediate possession
- 1 to 5 years old

Location

Pictures



* Location may be approximate

Landmarks

Nearby Localities

[Green Park Extn](#), [Yusuf Sarai](#), [Arjun Nagar](#), [Gautam Nagar](#), [Gulmohar Park](#), [Neeti Bagh](#), [Hauz Khas Enclave](#), [Safdarjung Enclave](#), [Safdarjung Development Area](#), [Hauz Khas](#), [Green Park Extn](#), [Yusuf Sarai](#), [Arjun Nagar](#), [Gautam Nagar](#), [Gulmohar Park](#), [Neeti Bagh](#), [Hauz Khas Enclave](#), [Safdarjung Enclave](#), [Safdarjung Development Area](#), [Hauz Khas](#), [Green Park Extn](#), [Yusuf Sarai](#), [Arjun Nagar](#), [Gautam Nagar](#), [Gulmohar Park](#), [Neeti Bagh](#), [Hauz Khas Enclave](#), [Safdarjung Enclave](#), [Safdarjung Development Area](#), [Hauz Khas](#), [Green Park Extn](#), [Yusuf Sarai](#), [Arjun Nagar](#), [Gautam Nagar](#), [Gulmohar Park](#), [Neeti Bagh](#), [Hauz Khas Enclave](#), [Safdarjung Enclave](#), [Safdarjung Development Area](#), [Hauz Khas](#), [Green Park Extn](#), [Yusuf Sarai](#), [Arjun Nagar](#), [Gautam Nagar](#), [Gulmohar Park](#), [Neeti Bagh](#), [Hauz Khas Enclave](#), [Safdarjung Enclave](#), [Safdarjung Development Area](#), [Hauz Khas](#), [Uday Park](#), [Mayfair Garden](#), [Yusuf Sarai](#), [Gulmohar Park](#), [Neeti Bagh](#), [Safdarjung Enclave](#), [Safdarjung Development Area](#), [Hauz Khas](#), [Uday Park](#), [Mayfair Garden](#), [Anand Lok](#), [Shahpur Jat](#), [Yusuf Sarai](#), [Gautam Nagar](#), [Gulmohar Park](#), [Neeti Bagh](#), [Hauz Khas Enclave](#), [Safdarjung Enclave](#), [Safdarjung Development Area](#), [Hauz Khas](#), [Uday Park](#), [Mayfair Garden](#), [Yusuf Sarai](#), [Gautam Nagar](#), [Gulmohar Park](#), [Neeti Bagh](#), [Safdarjung Enclave](#), [Safdarjung Development Area](#), [Hauz Khas](#), [Uday Park](#), [Anand Lok](#), [Shahpur Jat](#), [Yusuf Sarai](#), [Gulmohar Park](#), [Neeti Bagh](#), [Safdarjung Enclave](#), [Safdarjung Development Area](#), [Hauz Khas](#), [Uday Park](#), [Anand Lok](#), [Sarvodaya Enclave](#), [South Ext-II](#), [Green Park Extn](#), [Yusuf Sarai](#), [Gulmohar Park](#), [Neeti Bagh](#), [Safdarjung Enclave](#), [Safdarjung Development Area](#), [Hauz Khas](#), [Uday Park](#), [Anand Lok](#), [Sarvodaya Enclave](#), [South Ext-II](#), [Yusuf Sarai](#), [Gulmohar Park](#), [Neeti Bagh](#), [Safdarjung Enclave](#), [Safdarjung Development Area](#), [Hauz Khas](#), [Uday Park](#), [Anand Lok](#), [Sarvodaya Enclave](#), [South Ext-II](#), [Yusuf Sarai](#), [Gulmohar Park](#), [Neeti Bagh](#), [Safdarjung Enclave](#), [Safdarjung Development Area](#), [Hauz Khas](#), [Uday Park](#), [Anand Lok](#), [Sarvodaya Enclave](#), [South Ext-II](#), [Yusuf Sarai](#), [Gulmohar Park](#), [Neeti Bagh](#), [Safdarjung Enclave](#), [Safdarjung Development Area](#), [Hauz Khas](#), [Uday Park](#), [Anand Lok](#), [Sarvodaya Enclave](#), [South Ext-II](#), [Yusuf Sarai](#), [Gautam Nagar](#), [Gulmohar Park](#), [Neeti Bagh](#), [Safdarjung Enclave](#), [Safdarjung Development Area](#), [Hauz Khas](#), [more...](#)

Locality Reviews

Green Park, New Delhi

Green Park is central to all location. Good connectivity with metro station very close. Nice quiet back lanes. Plenty of places to go out for a meal. Hauz khaz village at walking distance so easy to walk up for a drink without having to worry about parking etc. very safe neighborhood, plenty of parks for kids.

Pros:

- *Green park market*
- *Plenty of eateries*
- *Safe place*

Cons:

- *Traffic jams*

Posted: Sep 1, 2015 by Rohan Tahim

Green Park, New Delhi is rated 7 out of 10 based on 1 user reviews.

Disclaimer: The reviews are opinions of PropertyWala.com members, and not of PropertyWala.com.

Explore

[Similar Properties](#)

[Properties in Green Park, New Delhi](#)

[Projects in New Delhi](#)

[Brokers in New Delhi](#)

More Information

Report a problem with this listing

Is this property no longer available or has incorrect information?

[Report it!](#)

Disclaimer: All information is provided by advertisers and should be verified independently before entering into any transaction. You may visit the relevant RERA website of your state to verify the details of this property. PropertyWala.com is only an advertising platform to help connect buyers and sellers and is not a party to any transactions, nor shall be responsible or liable to resolve any disputes between them.