

Office Space for rent in Nehru Place, New Delhi

50 lakhs



Fully Furnished/ Baer Shell Office Spaces Between 650 To.

- Bathrooms: Two
- Monthly Rent: 5,000,000
- Available: Immediate/Ready to move

Office space in **Nehru Place** Asia's Biggest Computer Market, **New Delhi**

When you call, please mention that you saw this ad on PropertyWala.

Features

Other features

- Immediate possession ■ 1 to 5 years old
- Society: Nehru Place Asia's Biggest Computer Market

Location

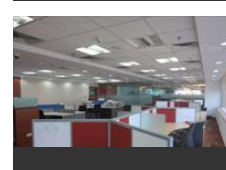
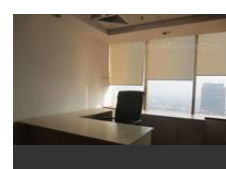
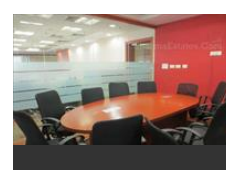
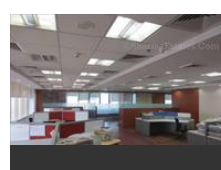
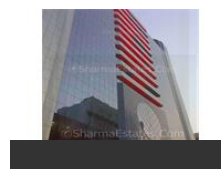
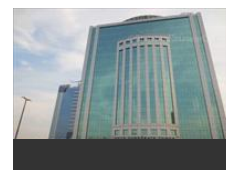
Advertiser Details



Scan QR code to get the contact info on your mobile

[View all properties by Sharma Estates](#)

Pictures



* Location may be approximate

Landmarks

Nearby Localities

[Sant Nagar](#), [Kalkaji](#), [Nehru Enclave](#), [Kailash Colony](#), [East Of Kailash](#), [Greater Kailash I](#), [Greater Kailash II](#), [Friends Colony East](#), [Sriniwaspuri](#), [Sant Nagar](#), [Kalkaji](#), [East Of Kailash](#), [Greater Kailash I](#), [Greater Kailash III](#), [Alaknanda](#), [Amar Colony](#), [Greater Kailash II](#), [Greater Kailash Enc II](#), [Ishwar Nagar](#), [Sant Nagar](#), [Garhi](#), [Kalkaji](#), [Nehru Enclave](#), [Kailash Colony](#), [East Of Kailash](#), [Pamposh Enclave](#), [Greater Kailash I](#), [Greater Kailash III](#), [Sriniwasपुरी](#), [Hemkunt Colony](#), [Sant Nagar](#), [Garhi](#), [Kalkaji](#), [Nehru Enclave](#), [Kailash Colony](#), [East Of Kailash](#), [Pamposh Enclave](#), [Greater Kailash I](#), [Greater Kailash III](#), [Hemkunt Colony](#), [Kalkaji](#), [Kailash Colony](#), [East Of Kailash](#), [Greater Kailash I](#), [Greater Kailash II](#), [Greater Kailash I](#), [Greater Kailash II](#), [Greater Kailash III](#), [Sriniwaspuri](#), [Alaknanda](#), [Amar Colony](#), [Greater Kailash II](#), [Hemkunt Colony](#), [Kalkaji](#), [Kailash Colony](#), [East Of Kailash](#), [Greater Kailash I](#), [Greater Kailash III](#), [Sriniwaspuri](#), [Alaknanda](#), [Amar Colony](#), [Greater Kailash II](#), [Hemkunt Colony](#), [Kalkaji](#), [Nehru Enclave](#), [Kailash Colony](#), [East Of Kailash](#), [Greater Kailash I](#), [Greater Kailash II](#), [Greater Kailash Enc II](#), [Ishwar Nagar](#), [Sukhdhev Vihar](#), [Hemkunt Colony](#), [Kalkaji](#), [Nehru Enclave](#), [Kailash Colony](#), [East Of Kailash](#), [Greater Kailash I](#), [Alaknanda](#), [Greater Kailash II](#), [Greater Kailash Enc II](#), [Ishwar Nagar](#), [Hemkunt Colony](#), [Kalkaji](#), [Kailash Colony](#), [East Of Kailash](#), [Greater Kailash I](#), [Alaknanda](#), [Amar Colony](#), [Greater Kailash II](#), [Greater Kailash Enc II](#), [Ishwar Nagar](#), [Kalkaji](#), [East Of Kailash](#), [Greater Kailash I](#), [Alaknanda](#), [Amar Colony](#), [Greater Kailash II](#), [Greater Kailash Enc II](#), [Ishwar Nagar](#), [Lajpat Nagar-II](#), [Chittaranjan Park](#), [Kalkaji](#), [Kailash Colony](#), [East Of Kailash](#), [Greater Kailash I](#), [Alaknanda](#), [Amar Colony](#), [Greater Kailash II](#), [Greater Kailash Enc II](#), [Ishwar Nagar](#), [Lajpat Nagar-II](#), [Kalkaji](#), [Kailash Colony](#), [East Of Kailash](#), [Greater Kailash I](#), [Alaknanda](#), [Greater Kailash II](#), [Greater Kailash Enc II](#), [Ishwar Nagar](#), [Lajpat Nagar-II](#), [Govindpurī](#), [Kailash Colony](#), [East Of Kailash](#), [Greater Kailash I](#), [Alaknanda](#), [Amar Colony](#), [Greater Kailash II](#), [Greater Kailash Enc II](#), [Ishwar Nagar](#), [Masjid Moth](#), [Sukhdhev Vihār](#), [East Of Kailash](#), [Greater Kailash I](#), [Amar Colony](#), [Greater Kailash II](#), [Greater Kailash Enc II](#), [Ishwar Nagar](#), [Masjid Moth](#), [Sukhdhev Vihar](#), [Lajpat Nagar-II](#), [Chittaranjan Park](#), [Kailash Colony](#), [East Of Kailash](#), [Greater Kailash I](#), [Alaknanda](#), [Greater Kailash II](#), [Greater Kailash Enc II](#), [Ishwar Nagar](#), [Lajpat Nagar-II](#), [Lajpat Nagar](#), [Govindpurī](#), [East Of Kailash](#), [Greater Kailash I](#), [Alaknanda](#), [Amar Colony](#), [Greater Kailash II](#), [Greater Kailash Enc II](#), [Ishwar Nagar](#), [Lajpat Nagar-II](#), [Lajpat Nagar](#), [Govindpurī](#), [East Of Kailash](#), [Greater Kailash I](#), [Alaknanda](#), [Amar Colony](#), [Greater Kailash II](#), [Greater Kailash Enc II](#), [Ishwar Nagar](#), [Lajpat Nagar-II](#), [Lajpat Nagar](#), [Govindpurī](#), [East Of Kailash](#), [Greater Kailash I](#), [Alaknanda](#), [Amar Colony](#), [Greater Kailash II](#), [Greater Kailash Enc II](#), [Ishwar Nagar](#), [Lajpat Nagar-II](#), [Lajpat Nagar](#), [Govindpurī](#), [East Of Kailash](#), [Greater Kailash I](#), [Alaknanda](#), [Amar Colony](#), [Greater Kailash II](#), [Greater Kailash Enc II](#), [Ishwar Nagar](#)

Locality Reviews

Nehru Place is famous Computer Market with lots of Business Centres. It is completely commercial Market. Flats here are easily rented out for Commercial purpose. Maintenance is

Nehru Place, New Delhi

done well by the Flat Owners' Association.

Pros:

- *Renting out is easy as it is completely Commercial Market.*

Posted: Oct 23, 2019 by Santosh Sardana

Nehru Place is one of the busy market of Delhi. Renowned in Asian software market.

Pros:

- *Good Accesibility*

Cons:

- *Very crowded market*

Posted: Jun 29, 2015 by [Sanjit Kumar \(Ksd Land Trades\)](#)

Centrally located with good connectivity to Connaught Place, Noida, Gurgaon as well as Faridabad by Metro.

Pros:

- *Metro Station*
- *Easy Access to Delhi / NCR*
- *Corporate and IT Hub*

Posted: Sep 4, 2013 by Naveen Panwar

Nehru Place, New Delhi is rated 8 out of 10 based on 3 user reviews.

Disclaimer: The reviews are opinions of PropertyWala.com members, and not of PropertyWala.com.

Explore

[Similar Properties](#)

[Properties in Nehru Place, New Delhi](#)

[Projects in New Delhi](#)

[Brokers in New Delhi](#)

More Information

Report a problem with this listing

Is this property no longer available or has incorrect information?

[Report it!](#)

Disclaimer: All information is provided by advertisers and should be verified independently before entering into any transaction. You may visit the relevant RERA website of your state to verify the details of this property. PropertyWala.com is only an advertising platform to help connect buyers and sellers and is not a party to any transactions, nor shall be responsible or liable to resolve any disputes between them.