

## Navanaami Platina - Thirumanahalli, Bangalore



Aims to enrich lives by setting new standards for customer

Navanaami Platina by Navanaami Projects pvt. Ltd. at Thirumenhalli, Thanisandra main Road in Bangalore offers residential project that host 2,2.5 and 3 Bhk apartment in various sizes.

- Project ID: J811896057
- Builder: Navanaami Projects pvt. Ltd.
- Location: Navanaami Platina, Thanisandra main Road, Thirumanahalli, Bangalore (Karnataka)
- Completion Date: Dec, 2018
- Status: Started

### Description

**Navanaami Platina** offers beautiful 2 BHK, 2.5 BHK and 3 BHK Apartments in Thanisandra main Road, Thirumenhalli, Bangalore the size of apartments may ranges from 1215 to 1960 sqft provided with best suited amenities like club house, gym, intercom etc for the comfortable and cozy life of the residents. The project with all the nearby major utilities like schools, colleges, hospitals, super-marts, parks and recreational centers.

**RERA No :-** PM/KA/RERA/1251/309/PR/171026/000519

### Amenities:

- Amphitheater
- Children's play area
- Club House
- Gymnasium
- Indoor Games
- Intercom
- Jogging Track
- Landscaped Gardens
- Multipurpose Room
- Power Backup
- Rain Water Harvesting
- Sewage Treatment Plant
- Swimming Pool
- Solid Waste Management And Disposal
- Lift Available

**Navanaami Projects** is a renowned name in the real estate market of Bangalore. The company has delivered numerous prestigious projects and has several more in the pipeline. With every project that it delivers, the company ensures that it exceeds customer's expectations rather than just meeting them. It keeps customers at the heart of everything it does and ensures that they receive the best. The company aims to be at the forefront of property marketing by offering tailored innovative solutions to its valued customers.

### Features

#### Luxury Features

- Power Back-up
- Lifts
- High Speed Internet

#### Lot Features

- Balcony

#### Recreation

- Swimming Pool
- Park
- Fitness Centre / GYM
- Club / Community Center

#### Security Features

- Security Guards
- Intercom Facility

#### Exterior Features

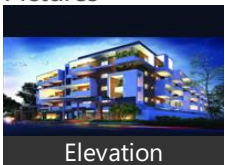
- Reserved Parking

#### Maintenance

- Maintenance Staff
- Water Supply / Storage
- Rain Water Harvesting

### Gallery

#### Pictures



Elevation

#### Floor Plans



Master Plan



Floor Plan A



Floor Plan B



Floor Plan C



Floor Plan D



Floor Plan E



Location Map

## Location

## Landmarks

### Hotel

Royal Orchid Resort & Convention C... Chairman, The Royale Senate-Hebbal (<11km), Roseline Suites (<11km), Godrej Woodsman Estate (<9km), Ramanashree California Resort-Dodd.. Howard Johnson-Nagavara (<8km), Liwa Hotel (<7km), Hotel Nandhana Vista (<13km), The Sanctum Suites Bangalore (<14k... Maple Inn-Kempapura (<8km), Country Inn & Suites By Radisson Be... Howard Johnson by Wyndham Beng... Arra Suites (<10km)

### Recreation

Manyata Embassy Business Park (<6k.. Lumbini Gardens (<9km), PVR Cinemas-MSR Elements Mall (<... Decathlon Sports India (<12km), Hennur Banaswadi Cosmopolitan Cl... Pushpanjali-Sultanpalya (<12km), Mukunda Theatre (<14km), Naatyakalakshetra Academy for Fine... Shri Amruth Chithra Mandira (<13km).

### Building

Orchid Woods (<5km), Sobha Chrysanthemum (<5km), Krishna Northwoods (<2km), Karle Town Centre (<8km), Kemp Fort (<10km), Sobha City ■■■■■■ (<2km), SLS Symphony (<7km), Vivek Marvel (<5km), R & S Riviera (<6km), R and S Riviera Bangalore (<6km), Adithya Celestial (<6km), Crystal Enclave (<9km), Supertech Micasa (<2km), Oceanus Greendale (<12km), Eco Narasimha (<11km), DS Max Spring Dale (<9km), Railway Wheel Factory West Colony ... Sobha Petunia (<9km), Manito Shelters (<12km), Nagarjuna Meadows Phase-1 (<9km), Vamshi Residency (<10km), SLS Spencer (<10km), Kalathoor House (<5km), VDB Celadon (<5km), Sobha Emerald-2 (<5km), Bornmann Enclave (<5km)

### Public Transport

Yelahanka Railway Station (<6km), Hebbal (<10km), Hebbal Railway Station (<11km), Banaswadi Railway Station (<14km), Nagavara (<9km), Bel Circle (<14km), Bmtc Kalyannagar Bus Station (<10k... Mekhri Circle-NB (<14km), Vishwanath Nagenahalli-EB (<9km), Nagashettyhalli B M T C Bus Station ... Kodigehalli Railway Station (<10km)

### Shopping Centre

MSR Regaliaa Elements Mall (<8km), Esteem Mall (<9km)

### Business & Services

Kirloskar Business Park (<9km), Rail Wheel Factory-Main Gate (<8km... Bharat Electronics-Main Gate ■■■■!...

### ATM/Bank/Exchange

City Union Bank-Yelahanka New Tow. State Bank of India (<7km), Canara Bank (<8km), State Bank of India-R A C P C Banasa... Bank of Baroda-Defence Colony (<9k. Karnataka Bank-Banaswadi (<11km), South Indian Bank (<11km), Uco Bank (<9km), Idbi Bank (<13km)

### Restaurant & Shops

Reliance Fresh (<7km), Lulu Value Mart (<5km), Five Star Chicken (<5km), Patels Inn (<12km), Pawan Textiles (<9km), Korea (<10km)

### Hospitals & Clinics

Columbia Asia Hospital-ER (<9km), Dr Ambedkar Medical College Hosp ... Yelhanka Govt Hospital (<6km),

MS Ramaiah Memorial Hospital-ER (... Specialist Hospital (<12km), Orthopaedic Clinic (<12km), Sham,  
MS Ramaiah Memorial Hospital (<14.. Dr B R Ambedkar Medical & Hospita... cloudnine clinic (<8km), DR. Agarwal,  
M S Ramaiah Medical Hosp (<14km), Dr Lal PathLabs (<9km), Banaswadi Hospital (<12km), Manipal Ankur (<9km),  
Chaya Hospital (<13km), M S Ramaiah Hospital (<13km), Chaitanya Hospital (<12km)

#### Accommodation

Club Cabana (<9km)

\* All distances are approximate

## Properties

### Navanaami Platina News

### Expert Reviews on Navanaami Platina

#### Explore

[Projects in Bangalore](#)

[Brokers in Bangalore](#)

#### More Information

#### Report a problem with this listing

Is any information on this page outdated or incorrect?

[Report it!](#)

**Disclaimer:** All information is provided by advertisers, including builders/agents/owners, or collected from publicly available sources and may not be verified under RERA. Any information provided on this website, including facts and figures, should be verified independently, including via the relevant RERA website, before entering into any transaction. PropertyWala.com is only an advertising platform to help connect buyers and sellers and is not a party to any transaction, nor shall be responsible or liable to resolve any disputes between them.

[Home](#) » [Bangalore Real Estate](#) » [Projects in Bangalore](#) » [Navanaami Platina - Thirumanahalli, Bangalore](#)