

2 Bedroom Apartment / Flat for sale in SBP City Of Dreams, Sector 127, M 49.9 lakhs



Land For Sale In Sunny Enclave, Mohali
SBP City Of Dreams, Mohali, Sector 127, Mohali - 140301..

- Project/Society: [SBP City Of Dreams](#)
- Area: 1240 SqFeet ▾
- Bathrooms: Two
- Total Floors: Three
- Furnished: Unfurnished
- Price: 4,990,000
- Age Of Construction: Under Construction
- Possession: Within 3 Months
- Bedrooms: Two
- Floor: First
- Facing: East
- Transaction: New Property
- Rate: 4,024 per SqFeet

Description

Premium Luxury 2 Bhk+ Store+ Servant
SBP SECTOR - 127 Mohali
Room Apartment(140 Square Yards)
Starts from 49.90/-

Amenities

- Power Backup,
- Covered Car Parking,
- Club House Membership Free
- Gated Society,
- On Road Project

Please mention that you found this ad on PropertyWala.com when you call.

Features

General

- Power Back-up

Lot

- Private Terrace ■ Balcony ■ Private Garden
- Basement ■ Park Facing

Exterior

- Reserved Parking ■ Visitor Parking
- Independent Garage ■ Servant Quarter

Maintenance

- Maintenance Staff ■ Water Supply / Storage
- RO System ■ Water Softner ■ Boring / Tube-well
- Rain Water Harvesting ■ Waste Disposal

Location

* Location may be approximate

Landmarks

Restaurant & Shops

Sukhjinder Karyana Store (<0.5km), Khurana Uniform (<1km), Raj Karyana Store (<1km), Gurvinder Di Hatti (<1km), Roop Lal Communication (<1km), Pehnawa Boutique (<1km), Dharshik Fashion House (<1km),

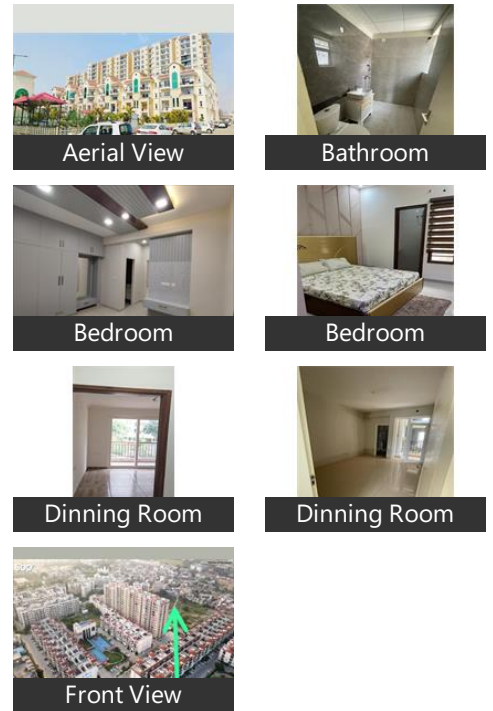
Advertiser Details

Tricity Home Search
Pardeep Singh
Sunny Enclave, Mohali

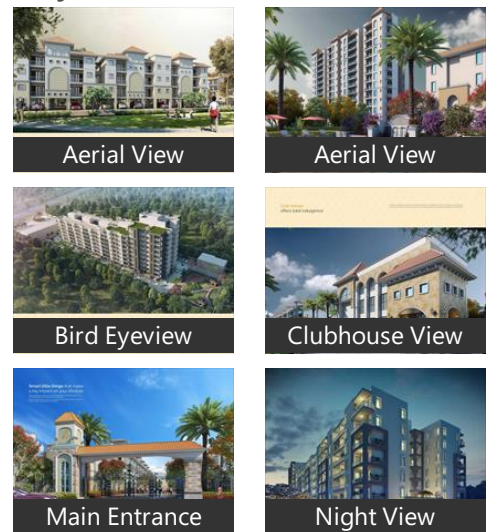
mob: 9501608898
tel: 7710397000
mail: psdeep3@gmail.com
www.propertywala.com/tricity-home-search

Scan QR code to get the contact info on your mobile
[View all properties by Tricity Home Search](#)

Pictures



Project Pictures



* These pictures are of the project and might not represent the property

Project Floor Plans

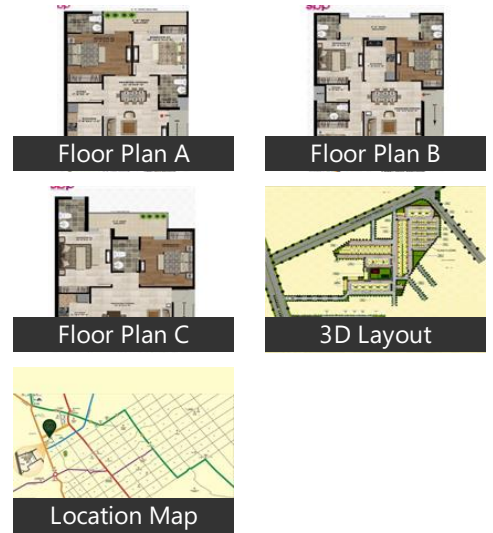
Amrit Grocers (<1km), Deep Karyana & Daily Products (<1km... Everyday Value Bazar (<1km), Panesar Shoopee (<1km), Mahajan Store (<1km), Sarthak Shopping Plaza (<1km), Ram Ram Ji Attachi Bag (<1km), Mahaveer Karyana Store (<2km), Less Price (<2km), Sharma Ji Food Corner (<2km), Guru Nanak Departmental Store (<2k.. Daily Needs (<2km), Morning Corner (<2km), Haryana Departmental Store (<2km), Paramveer Departmental Store (<2km. Elegant Fashions (<2km), Shopping Hub (<3km), S G Fashion Point (<3km), Wajir Karyana Store (<3km), Swami Gee (<3km), Asmi Collections (<3km), Rasam Boutique and Departmental S... Tarsem Singh (<3km), Veer Ji Medical Store (<3km), Guls Designer Boutique (<3km), Unique Garments (<3km), Good Boutique & Cosmetic (<3km), Harish Karyana Store (<3km), Preet Boutique (<3km), Singla Departmental Store (<3km), Golden Stick Boutique (<3km)

Hotel

Oyo 77653 Hotel le Majestic (<0.5km), Hotel Sunrise (<1km), Hotel Noor (<1km), Hotel Sartaj (<2km), Cavanal Hill Resort (<2km)

Hospitals & Clinics

Radiance Hospital (<0.5km), Mini PSG Landra (<0.5km), Siya Health Care (<1km), Guru Nanak Laboratory & Ecg Cente... Neo Hospital (<1km), Guru Nanak Medicos (<1km), Dental Clinic (<1km), Kharar Ambulance Service (<1km), Vicky Medical Store (<1km), Jivan Jot Hospital Kharar (<1km), Guru Nanak Health Clinic (<1km), Talrika Dental Care (<1km), Dr. Inderjeet, Clove Dental (<1km), Dr Lal Pathlabs (<1km), Raadi Clinic (<1km), Shri Dental Clinic & Implant Centre (... Vijay Medical Store (<2k



Locality Reviews

Sector 127, Mohali

Locality introduction and neighbourhood

Sector-127, a residential locality and the last sector of Mohali, enjoys excellent road connectivity to the rest of the city via Ludhiana Chandigarh State Highway, Landran Road, etc. Mundi Kharar, Chajju Majra Colony, Swaraj Nagar, NRI Enclave and Gulmohar City are the nearest localities to Sector-127. Sector-127 features some under-construction and completed residential projects built by the developers of Shivalik Group, Singla Builders and Promoters, Gillco Valley Builders, etc. Housing options like residential houses, low-rise to mid-rise to multi-storey apartments are available in Sector-127.

Physical infrastructure

Arya College Road, Landran Road, and Ludhiana Chandigarh State Highway connect Sector-127 to the rest of the city. Kharar Railway Station is situated at a range of 3Km which can be reached through Gillco Palms Road. Furthermore, via NH205A, one can reach Shaheed Bhagat Singh International Airport, which is approximately 26Km away.

Social & retail infra

The Spanning Kids School, Gillco International School, Diamond Public School, Little Scholars School, and A.P.J. Public School, are the renowned educational institutes situated in and around Sector-127. Also, a few healthcare centres such as Kaushal Hospital - Orthopedic Doctor, Sharma Multispeciality Hospital, SK Multispeciality Hospital, City Hospital, and Kalra Hospital are located near to Sector-127. Ansal City Centre and VR Punjab are around 4Km away. Also, Phase 5 Market is situated at a distance of 8Km.

Nearby employment hubs

"Sector-127 is situated in Mohali which possess prime companies like Godrej Group, Tata Communications, Punjab Communications Limited, Punjab Tractor Limited (PTL), ICI Paints, and Vodafone, etc. Industrial Area Phase 1 is around 20Km via Shanti Path. Industrial Area Phase 1 possesses a number of manufacturing units of industrial fasteners (nuts, bolts, and screws), paper products and printing, sanitary fittings, etc.Source: Magicbricks Research"

Pros:

- All things are easily available

Cons:

- Little rushy

Posted: May 15, 2021 by Sahil Dhiman (Jai Durqa Property)

Key Estate is an accomplished real estate firm deals in "Mohali, locality. Drawing from their years of experience they bring More.

Pros:

- Its Gated and Secure society. And near by all amenities.

Cons:

- No any negative point

Posted: Aug 7, 2020 by Sonia sohota (Key Estate)

This sector is a good habitat. At central Kharar, it is well connected by dual highway roads leading to chandigarh (Ludhiana-Chandigarh) and Ambala (via Landran. It is also central to CGC Landran, Chd University and IIT Ropar. Gillco Valley itself has a good International school and almost 37 school buses of Mohali and Chandigarh pick/ drop students here. Gillco Valey has a decent resident market which is functional almost fulltime (0600hrs to 2300hrs). Hospitals like MAX, Fortis, PGI, Govt hospital are all 5-6 km away.

Pros:

- Low cost
- Gated and secured premises
- Good gentry

Cons:

- Touched by 02 highways
- Flyover is under construction, likely to complete this year.
- Fairly dense population.

Posted: Sep 9, 2019 by Kamaljit Singh

Very clean and nice society. Shops are in complex. Lots of parks. Connected to kharar landran road and near airport road.

Pros:

- Clean
- Lota of parks

Cons:

- None

* These floor plans are of the project and might not represent the property

Posted: Jun 6, 2017 by Kirandeep Singh

Sector 127, Mohali is rated 5 out of 10 based on 4 user reviews.

Disclaimer: The reviews are opinions of PropertyWala.com members, and not of PropertyWala.com.

Project Reviews

SBP City Of Dreams

Its nice township and delivered successfully. All units sold out and family living happily.

Pros:

- *Beauty fully designed township*

Posted: Sep 17, 2020 by Manoj Mathur

Sbp City Of Dreams Mohali is rated 9 out of 10 based on 1 user reviews.

Disclaimer: The reviews are opinions of PropertyWala.com members, and not of PropertyWala.com.

Explore

[Similar Properties](#)

[Properties in Sector 127, Mohali](#)

[Projects in Mohali](#)

[Brokers in Mohali](#)

More Information

Report a problem with this listing

Is this property no longer available or has incorrect information?

[Report it!](#)

Disclaimer: All information is provided by advertisers and should be verified independently before entering into any transaction. You may visit the relevant RERA website of your state to verify the details of this property. PropertyWala.com is only an advertising platform to help connect buyers and sellers and is not a party to any transactions, nor shall be responsible or liable to resolve any disputes between them.