

## 3 Bedroom Apartment / Flat for sale in Patia, Bhubaneswar

1.8 crore



### 3BHK FLAT AT PATIA

Shuvam Meadows, Near Infocity Square, Patia, Bhubaneswar..

- Area: 2180 SqFeet ▾
- Bedrooms: Three
- Bathrooms: Three
- Floor: Seventh
- Total Floors: Seventeen
- Facing: East
- Furnished: Unfurnished
- Transaction: New Property
- Price: 18,000,000
- Rate: 8,257 per SqFeet **+15%**
- Age Of Construction: Under Construction
- Possession: Within 4 Years

### Advertiser Details

**Omm Creation**  
**Chandra Sekhar Mishra**  
 Broker

C R P Square, Bhubaneswar  
 mob: 9237384967  
 tel: 9776033804  
 mail:  
[www.propertywala.com/omm-creation-bhu](http://www.propertywala.com/omm-creation-bhu)

Scan QR code to get the contact info on your mobile  
[View all properties by Omm Creation](#)

## Description

Welcome to Shuvam Meadows, a luxurious apartment located in the safe and secure locality of Patia, Bhubaneswar.

- This gated society offers a unique investment opportunity for those looking for a luxury a price of Crore, this spacious apartment spans across 1282 Square Feet, providing ample space for you and your family.
- The apartment features 3 bedrooms and 3 bathrooms, making it ideal for a comfortable you enter the apartment, you will be greeted by a mesmerizing road view from the balcony.
- The apartment is unfurnished, allowing you to design and customize the space according to your of the highlights of Shuvam Meadows is its range of amenities that cater to all age groups.
- You can stay fit and active by using the gymnasium, badminton and tennis courts, jogging and cycle track.
- The society also provides a clubhouse and Kids Play Areas for recreational safety and security are of utmost importance, which is why the apartment complex offers 24 x 7 security, CCTV surveillance, and security staff.
- Additionally, there is a 24-hour concierge service to cater to your the 15th floor of the 17-floor building, this apartment offers privacy, tranquility, and a magnificent view from its balcony or terrace.
- The high-speed elevators and power backup ensure a convenient living miss this opportunity to own a luxurious apartment in Patia, Bhubaneswar.

Enhance your lifestyle and make a smart investment by choosing Shuvam Meadows.

When you contact, don't forget to mention that you found this ad on PropertyWala.com.

## Features

### General

- Power Back-up
- Lifts

### Lot

- Private Terrace
- Balcony
- Basement
- Corner Location

### Exterior

- Reserved Parking
- Visitor Parking

### Maintenance

- Maintenance Staff
- Water Supply / Storage
- RO System
- Water Softner
- Boring / Tube-well
- Rain Water Harvesting
- Waste Disposal

## Location

### Security

- Security Guards
- Fire Alarm

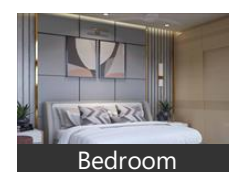
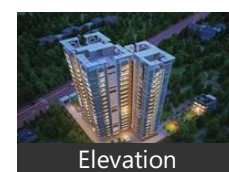
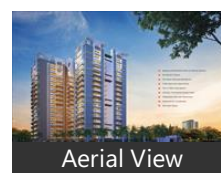
### Interior

- Granite Flooring
- Feng Shui / Vaastu Compliant

### Recreation

- Park
- Fitness Centre / GYM
- Club / Community Center

## Pictures



## Floor Plans



## Documents



\* Location may be approximate

## Landmarks

### Nearby Localities

[Patharagadia](#)

\* All distances are approximate

## Locality Reviews

Patia, Bhubaneswar

Patia is the crowded market of Bhubaneswar. It consists main IT center Infocity, No 1 Private University KIIT and all modern club, Hotel are present there. Population now a days increasing in Patia.

### Pros:

- *Demanded area*
- *Maximum Engineering, MBA and other institutions*
- *Well Planned Area*

### Cons:

- *Lots of people so may be noise and air polution*

Posted: Jan 17, 2015 by Shiva Swarup

Patia is a hub of Institutions and IT cities so for better career of your children buy flats here. In future it'll be more demand area. Now here India govt. take more future plan so invest today.

### Pros:

- *Its best for education*
- *Its best for IT jobs*
- *Its best for newbies.*

### Cons:

- *Govt. tries for good progress here but working very slow.*
- *Most projects are incomplete*
- *Basically now all road works are under construction.*

Posted: Nov 5, 2014 by [Kunal kant \(Om Infra Ventures\)](#)

Railway station & hospital just 500 mtr. Mall & bus stand just 600 mtr. KIIT university and many engineering colleges are near by.

### Pros:

- *VIP area.*

### Cons:

- *Airport far away.*

Posted: May 7, 2013 by Dilip DAS

Patia, Bhubaneswar is rated 6 out of 10 based on 3 user reviews.

Disclaimer: The reviews are opinions of PropertyWala.com members, and not of PropertyWala.com.

## Explore

[Similar Properties](#)

[Properties in Patia, Bhubaneswar](#)

[Projects in Bhubaneswar](#)

[Brokers in Bhubaneswar](#)

## More Information

## Report a problem with this listing

Is this property no longer available or has incorrect information?

[Report it!](#)

**Disclaimer:** All information is provided by advertisers and should be verified independently before entering into any transaction. You may visit the relevant RERA website of your state to verify the details of this property. PropertyWala.com is only an advertising platform to help connect buyers and sellers and is not a party to any transactions, nor shall be responsible or liable to resolve any disputes between them.