

2 Bedroom Apartment / Flat for sale in VJ Yashone Eternitee, Hinjewadi P. 66.95 lakhs



2 Bedroom Apartment For Sale In Hinjewadi Phase-2, Pune

VJ Yashone Eternitee, Hinjewadi Phase-2, Pune - 411057 ...

- Project/Society: [VJ Yashone Eternitee](#)
- Area: 700 SqFeet ▾
- Bedrooms: Two
- Bathrooms: Two
- Transaction: New Property
- Price: 6,695,000
- Rate: 9,564 per SqFeet
- Age Of Construction: Under Construction
- Possession: Within 3 Years

Advertiser Details

TRESPECT
TRESPECT INDIA
Director

Bandra Kurla Complex, Mumbai
mob: 9999788104
tel:
mail:
propertywala.com/trespect-india-private-limited

Scan QR code to get the contact info on your mobile
[View all properties by TRESPECT INDIA PRIVATE LIMITED](#)

Description

VJ Yashone Eternitee is located in the heart of Mann, Hinjewadi Ph-2 offers 2 BHK apartments with different sizes ranging from 700 sqft. The project is spread over an area of 7 acres of land with 45+ Lifestyle & convenience amenities. The project has 5 buildings with 22 floors and 950 units to offer. This project has 10+ Retail & grocery stores. The project is close to the IT Hubs and the Upcoming metro stations to give you a stress-free commute to your workplace.

RERA ID :-
P52100024108
P52100000037
P52100046122
P52100025592

Amenities

- Swimming Pool
- Reflexology Park
- Solar Water Heating
- Water Softener Plant
- Video Door Security
- Multipurpose Court
- Multipurpose Hall
- Indoor Games
- Sewage Treatment Plant
- Jogging Track
- Rain Water Harvesting
- 24x7 Security
- Club House
- 24/7 Power Backup
- Gated Community
- Gymnasium
- 24/7 Water Supply
- Landscape Garden
- Children's Play Area
- Lift(s)
- Car Parking
- Open Space
- Security Cabin
- Senior Citizen Sitout
- Internal Street Lights
- Paved Compound
- Fire Fighting Systems
- DG Availability
- Waste Management

When you call, don't forget to mention that you saw this ad on PropertyWala.com.

Features

General

- Power Back-up
- Centrally Air Conditioned
- Lifts
- High Speed Internet
- Wi-Fi

Lot

- Balcony
- Park Facing

Exterior

- Reserved Parking
- Visitor Parking

Maintenance

- Maintenance Staff
- Water Supply / Storage

Security

- Security Guards
- Electronic Security
- Intercom Facility

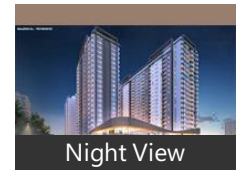
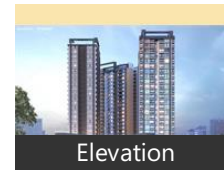
Interior

- Woodwork
- Modular Kitchen
- Granite Flooring
- Wooden Flooring
- Feng Shui / Vaastu Compliant

Recreation

- Swimming Pool
- Park
- Fitness Centre / GYM
- Club / Community Center

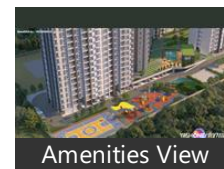
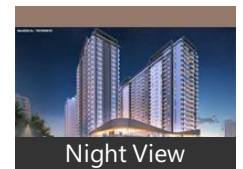
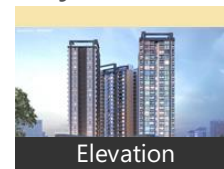
Pictures



Floor Plans

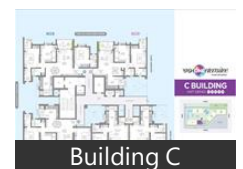
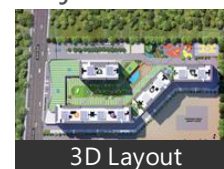


Project Pictures



* These pictures are of the project and might not represent the property

Project Floor Plans



- Water Softner
- Rain Water Harvesting
- Waste Disposal

Location



* These floor plans are of the project and might not represent the property

* Location may be approximate

Landmarks

Petrol Station

Shell (<0.5km), Bharat Petroleum (<3km)

Restaurant & Shops

Sai Provision Emporis (<0.5km), Balaji Fresh Mart (<0.5km), Pawan Kirana Stores (<1km), Glow Mart (<1km), SS Fashion Hub (<2km), Prince Collection (<2km), Shama Fashion Boutique (<2km), Samruddhi Kirana Stores (<2km), Bhavana Shoes House (<2km), Mauli Bhaji Market (<2km), Kaka Mart (<2km), Jockey (<2km), Mahavir (<2km), Puja Trading Co (<2km), Vishwas Cloth Centre (<2km), Shri Balaji Trading Kirana (<2km), Kids Paradise (<2km), Bhagyalaxmi Super Market (<3km), Flora Passion India (<3km), Avanti Shoppy (<3km), Capital Market (<3km), JMD Fashion (<3km), Mega Super Shoppee (<3km), Anokhee Fashion (<3km), Atharv Super Market (<3km), Ganesh Provision Stores (<3km), Raju Footwear (<3km)

Public Transport

TATA Motors (It Park) (<0.5km), D Holer (<0.5km), Quadron Phase-2 Bus Stop (<1km), Circle (It Park) (<2km), Kpit Phase 3 Bus Stop (<2km), Tech Mahindra (It Park) (<2km), Infosys Phase 3 (Gawarwadi) (<3km), Infosys Phase 2 (<3km)

ATM/Bank/Exchange

Icici Bank (<0.5km), HDFC Bank (<1km), Axis Bank (<2km), State Bank of India-Midc (<2km), Kotak Mahindra Bank (<2km), Bank of Baroda (<2km), Indian Overseas Bank-Hinjewadi (<3km), Indian Overseas Bank (<3km), Bank of Baroda-Mann (<3km), Central Bank of India (<3km), Indian Bank (<3km), Canara Bank-Hinjewadi (<3km), Central Bank of India-Hinjewadi (<3km), State Bank of India-Sbiintouch (<3km), Idbi Bank (<3km)

[more..](#)

Explore

[Similar Properties](#)

[Properties in Hinjewadi Phase-2, Pune](#)

[Projects in Pune](#)

[Brokers in Pune](#)

More Information

Report a problem with this listing

Is this property no longer available or has incorrect information?

[Report it!](#)

Disclaimer: All information is provided by advertisers and should be verified independently before entering into any transaction. You may visit the relevant RERA website of your state to verify the details of this property. PropertyWala.com is only an advertising platform to help connect buyers and sellers and is not a party to any transactions, nor shall be responsible or liable to resolve any disputes between them.