

2 Bedroom Holiday Home for rent in Alwarpet, Chennai

70,000



Fully Furnished Monthly Basis 2bhk GUEST HOUSE For Rent Near Alwarpet Rs.70,000
ALWARPET, Alwarpet, Chennai - 600018 (Tamil Nadu)

- Area: 1100 SqFeet ▾
- Bathrooms: Two
- Total Floors: Four
- Lease Period: 11 Months
- Rate: 64 per SqFeet
- Age Of Construction: 5 Years
- Available: Immediate/Ready to move
- Bedrooms: Two
- Floor: First
- Furnished: Furnished
- Monthly Rent: 70,000

Description

Fully furnished monthly basis 2bhk GUEST HOUSE for rent near alwarpet Rs.70,000.

1st floor, 1100sqft, balcony portion, fully

furnished 2BHK ,

2bedrooms, hal , kitchen, lights, fan, bed, cot,

A/C, fridge,

T.V with DTH Connection, SOFA, Gas

Connection, posh area,

marble flooring, dining table, microwave oven,

decent location,

washing machine, suitable for corporate

company employees,

car parking, ready to occupy.

we are the real estate consultants.

1 month rent is our brokerage commission.

Genuine persons WHO ARE WILLING TO PAY THE BROKERAGE COMMISSION CAN CONTACT

MANI

98-43-44-55- four -1.

Please mention that you found this ad on PropertyWala.com when you call.

Location

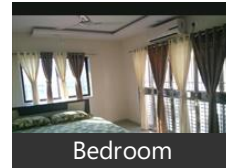
Advertiser Details

Mani Real Estate
Mani agoram
Broker
Purassaiwakkam, Chennai
mob: 9843445541
tel:
mail:
www.propertywala.com/mani-real-estate

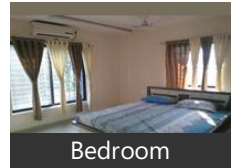
Scan QR code to get the contact info on your mobile

[View all properties by Mani Real Estate](#)

Pictures



Bedroom



Bedroom



Living Room

* Location is approximate

Locality Reviews

Alwarpet, Chennai

Heart of the city in Chennai. Perfect place for having office. One of the most peaceful locations for having office

Cons:

- NO NEGATIVE ISSUES AT ALL

Posted: Feb 19, 2021 by Alkesh Gupta

Alwarpet prime area near by Apollo hospital and many other hospital and many mall s and college nearby

Pros:

- Appollo hospital nearby
- Many non veg , veg hotels and star hotels nearby
- Near by college like stella marys college and siet college nearby

Cons:

- Costly area in Chennai south

Posted: Nov 14, 2019 by [Arumugam Ponniahpillai \(Arumugam Realty\)](#)

Prime area with airport just being 10 km away and railway station at a distance of 3 to 4 km. Hospitals, commercial complexes and schools are within a reach with good connectivity.

Pros:

- Commercial hub
- Good connectivity
- Well developed area

Cons:

- Costly area

Posted: Feb 19, 2019 by [Ponniah Arumugam \(Padma Reality\)](#)

Alwarpet- posh location much sought after less crowded- reasonable rentals unlike premium ultra commercial locations like T. Nagar, Nungambakkam etc.Strategic well connected centrepoint between EAST TO WEST & NORTH to SOUTH of CHENNAI.

Pros:

- Airport access in 10 KMs - 25 minutes by car.
- Chennai Central/ Egmore access 10 KMs - 25 minutes by car
- Arterial road - Anna Salai- 2 KMs

Cons:

- Local Railway connectivity 2 - 4 KMs

Posted: Feb 23, 2017 by Apsara Services

Alwarpet, Chennai is rated 7 out of 10 based on 4 user reviews.

Disclaimer: The reviews are opinions of PropertyWala.com members, and not of PropertyWala.com.

Explore

[Similar Properties](#)

[Properties in Alwarpet, Chennai](#)

[Projects in Chennai](#)

[Brokers in Chennai](#)

More Information

Report a problem with this listing

Is this property no longer available or has incorrect information?

[Report it!](#)

Disclaimer: All information is provided by advertisers and should be verified independently before entering into any transaction. You may visit the relevant RERA website of your state to verify the details of this property. PropertyWala.com is only an advertising platform to help connect buyers and sellers and is not a party to any transactions, nor shall be responsible or liable to resolve any disputes between them.