

Office Space for rent in Salt Lake City Sector-5, Kolkata

4 lakhs



★ Featured

Office Space For Rent In Godrej Genesis Building, Ep Block

Godrej Genesis Building, Ep Block, Sector V Near- Colleg..

- Area: 6065 SqFeet
- Bathrooms: Three
- Floor: Sixteenth
- Total Floors: Seventeen
- Facing: North West
- Furnished: Furnished
- Lease Period: 36 Months
- Monthly Rent: 400,000
- Rate: 66 per SqFeet
- Age Of Construction: 9 Years
- Available: Immediate/Ready to move

Advertiser Details

Exact Match

EXACT MATCH YOUR REAL ESTATE EXPERTS

Branch Head

Park Street, Kolkata

Mobile: 9830034227

Phone: +91-33-40081750

Email: property@exactmatchs.com
exactmatchs.com/



Scan QR code to get the contact info on your mobile

[View all properties by Exact Match](#)

Description

Commercial Office Space For Rent In Godrej Genesis Building, Ep Block, Sector V Near- College More

6065 Sqft

16h Floor

Fully Furnished With 130 Workstation 2 Cabin 1 Conference 2 Car Parking

Storage, Car Parking Lift Etc

Ideal For Any Kind Of Office

Rent 4lac Note Our Brokerage Charge Is 1 Month On Rent

When you contact, don't forget to mention that you found this ad on PropertyWala.com.

Features

General

- Power Back-up
- Lifts

Lot

- Private Terrace
- Basement

Maintenance

- Maintenance Staff
- Water Supply / Storage
- Water Softner
- Waste Disposal

Security

- Security Guards
- Electronic Security
- Fire Alarm

Exterior

- Reserved Parking
- Servant Quarter

Location

* Location may be approximate

Landmarks

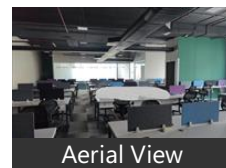
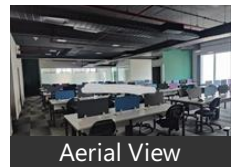
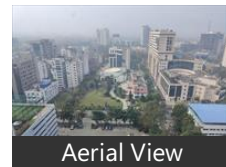
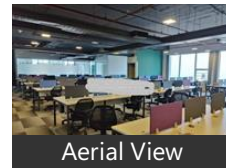
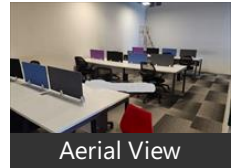
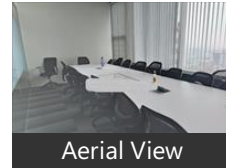
Hospitals & Clinics

Apollo Diagnostics (<0.5km), Dr Batra, Dr. Rajat Sarkar Clinic (<0.5km), Yogi Medical Centre (<0.5km), Med Express Pharmacy & Clinic (<0.... Stemz Healthcare (<0.5km), Medlifernational Fulfilment Ctr (<0.. Gnosis Lab (<0.5km), Hanemann Research Laboratory (<0.... Gamca (<0.5km), Prasida Ayurveda Clinic (<0.5km), Dental World - Salt Lake (<0.5km), Regional Occupational Health Centre.. Wipro GE Healthcare (<0.5km), Department of Dentistry Services (<1... Rotary Narayana Eye Hospital (<1km), Rotary Narayana Multispeciality Hos... Ayurvedic Hospital Salt Lake. (<1km), Vocational Rehabilitation Centre For ... Corporate Diagnostics Centre (<1km), Suraksha Diagnostic (<1km), Mindray Medical India Private Limite...

ATM/Bank/Exchange

Union Bank of India (<0.5km), Bank Of India (<0.5km), United Bank Of India (<0.5km), Punjab National Bank (<0.5km), South Indian Bank (<0.5km), State Bank of India (<0.5km), Hdfc Bank ATM (<0.5km), HDFC Bank (<0.5km), Canara Bank-Kolkata-Salt Lake Secto... Canara Bank (<0.5km), Bandhan Bank (<0.5km), Bank of Baroda (<0.5km), Axis Bank-Bidhannagar (<0.5km),

Pictures



Bank of Baroda-Regional Sarb Greate.. Punjab National Bank-Sector V Salt L... Axis Bank-Salt Lake Sector II (<0.5km), Axis Bank-Salt Lake (<0.5km), Axis Bank (<0.5km), Bank of Baroda-Greater Kolkata Regi... Ratnakar Bank (<0.5km), Bandhan Bank-Headquarters (<0.5km. Kotak Mahindra Bank (<0.5km), HSBC (<0.5km), Axis Bank-Saltlake (<0.5km), Bank of Baroda-Regional Office (<0.5.. State Bank of India-CB Salt Lake (<0.... ICICI Bank (<0.5km), State Bank E-Corner (<0.5km), Kotak Mahindra Bank ATM (<0.5km), Indusind Bank (<1km), Bandhan Bank-Salt Lake Sector-5 (<1.. Indian Bank (<1km), Idbi Bank-Saltlake (<1km), Idbi Bank (<1km), Standard Chartered (<1km), Punjab National Bank-Salt Lake Secto.

Hotel

Joey, Hotel Treebo Stay Kalketa Calcuta S (... Ibiza Guest House (<0.5km), Beyzaa (<0.5km), [more...](#)

Locality Reviews

Salt Lake City Sector-5, Kolkata

Salt Lake is a CBD area mainly used for offices. There is no conveyance problem you will get plenty of conveyance from salt lake to anywhere. Many reputed offices are situated here i.e TCS, Cognizant, IBM etc

Pros:

- you will see many offices situated

Cons:

- too much crowded area

Posted: May 10, 2017 by [Best Realty \(Best Nest Realty\)](#)

Salt Lake Sector-5 is an IT Hub, a Financial Sector in Eastern India located at Kolkata - North. All major companies are doing their business form this sector. All modern amenities and facilities are easily available to setup a new corporate address over here. Very well connected from all other parts of Kolkata as well as Eastern India. Airport, Railway Station, Metro Station, posh residential area, all are very nearby from Salt Lake Sector-5.

Pros:

- Well connected from other parts.
- Business Hub.
- Good social and political environment.
- Modern amenities and facilities are easily available.

Cons:

- Rapidly growing traffic.

Posted: Jul 27, 2013 by [Chandra-Sekhar Chowdhury \(Ct Realtor\)](#)

Salt Lake City Sector-5, Kolkata is rated 7 out of 10 based on 2 user reviews.

Disclaimer: The reviews are opinions of PropertyWala.com members, and not of PropertyWala.com.

Explore

- [Similar Properties](#)
- [Properties in Salt Lake City Sector-5, Kolkata](#)
- [Projects in Kolkata](#)
- [Brokers in Kolkata](#)

More Information

Report a problem with this listing

Is this property no longer available or has incorrect information?

[Report it!](#)

Disclaimer: All information is provided by advertisers and should be verified independently before entering into any transaction. You may visit the relevant RERA website of your state to verify the details of this property. PropertyWala.com is only an advertising platform to help connect buyers and sellers and is not a party to any transactions, nor shall be responsible or liable to resolve any disputes between them.