

## Warehouse / Godown for rent in NelaMangala, Bangalore

9.4 lakhs



### Warehouse/ Godown For Rent At Nelamangala / Makali / Tumkur Road

Nelamangala, Makali, NH 4, 8th Mile Tumkur Road, Bang..

- Area: 53000 SqFeet ▼
- Bathrooms: Nine
- Floor: Ground
- Total Floors: One
- Facing: North
- Furnished: Semi Furnished
- Lease Period: 24 Months
- Monthly Rent: 940,000
- Rate: 18 per SqFeet +5%
- Age Of Construction: 2 Years
- Available: Immediate/Ready to move

### Advertiser Details

**F5K Realty**  
**Feroz Khan**  
Director  
HBR Layout, Bangalore  
mob: 7892210005  
mail: f5krealty@gmail.com  
tel: 8105299975  
www.propertywala.com/f5k-realty-bangalore

Scan QR code to get the contact info on your mobile  
[View all properties by F5K Realty](#)

### Description

**Warehouse / Godown Space for Rent At Nelamangala , Makali , Tumkur Road , Close to Himalaya Drugs, Husker Road, NH - 4, 8th Mile Road, Tumkur Road , Nelamangala , Bangalore - Mumbai Highway, Makali, Nelamangala, Bangalore for which Rent is negotiable.**

This Warehouse / Godown is close to Main Road, with facility for labor nearby, close to hospitals, bus stand, police station, fire brigade, access to transport with plenty of parking for trucks & 40ft containers.

Facilities toilets for labours, office with attached washroom. Vdf flooring, canopy done. Facility for crane, 4ft dock with dock leveller provision, lighting arrestor, fire hydrant with sprinkler facility if required. Turbo Ventilators, exhaust, natural lighting, back up, power, borewell water facility,

New construction, security room, labor room, drivers rest room, close gated 10ft compound wall with 3ft above barewire, cement Roads all around with drainage systems.

When you call, please mention that you saw this ad on PropertyWala.com.

### Features

#### General

- Power Back-up
- Room AC
- Lifts
- High Speed Internet
- Wi-Fi

#### Lot

- Corner Location

#### Maintenance

- Water Supply / Storage
- RO System
- Water Softner
- Boring / Tube-well
- Rain Water Harvesting
- Waste Disposal

#### Security

- Security Guards
- Electronic Security
- Intercom Facility
- Fire Alarm

#### Exterior

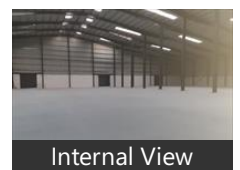
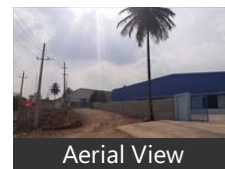
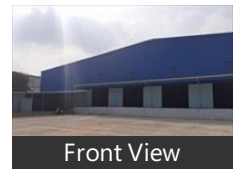
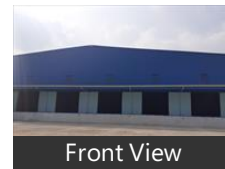
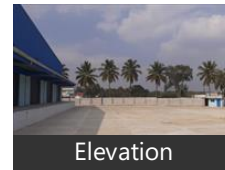
- Reserved Parking
- Visitor Parking
- Independent Garage
- Servant Quarter

#### Other features

- Hi Tech Warehouse
- International Standard
- Latest Modern Facility
- Fire Compliance
- Hydrant Facility
- Sprinklers Facility
- Natural Lighting
- Air Exhaustors
- Compound Wall
- Dock Leveller Provision
- PEB Structure
- Fully Covered Canopies
- VDF Flooring
- Turbo Ventilators
- Cafeteria Space
- Internal LED Lights
- Ample Truck Parking Space

### Location

### Pictures



\* Location may be approximate

### Landmarks

## Restaurant & Shops

Brahmara Traders (<0.5km), Show Off (<0.5km), Saravana Stationeries and Fancy Stor... Ambika Jewellers (<0.5km), Shri Krishna Textiles (<0.5km), Amar Jyothi Textiles (<0.5km), Maruti Fashion (<0.5km), Sagar Textiles (<0.5km), Kumar Stores (<0.5km), Shanti Hall (<0.5km), Shri Rama Hall (<0.5km), Ratan Textiles (<0.5km), S. R. S. Provision Stores (<0.5km), Mohini Dresses (<0.5km), Malviyas (<0.5km), Shankar Textiles (<0.5km), Shri Dhanalakshmi Textiles (<0.5km), Mahalaxmi Garments (<0.5km), Maya Fashion (<0.5km), Shri Matha Annapooreshwari Tradin. Suhani Hi Fashion (<0.5km), M. R. Fashions (<0.5km), Muskaan Baby World (<0.5km), Monica Textiles (<0.5km), Maa Chamunda Provision Store (<0... Chirag Enterprises (<0.5km), Praveen Provision Store (<0.5km), Saree Centre (<0.5km), Hanuman Textile (<0.5km), Shri Ganapathi General Store (<0.5km. Sharada Fashions (<0.5km), Shanti Textiles (<0.5km), Shri Gajanana Provision Store (<0.5km NR Enterprises (<0.5km), Jay Mataji Textiles (<0.5km), Bangalore Footwear (<0.5km), Shri Vasavi Grandhige Shop (<0.5km), Kiledar Provision Store (<0.5km), Shri Veereswara Provision Store (<0.5.. Rajashree Textiles (<0.5km), Shri Ganesh Store (<0.5km), Shri Shivakumara Stores (<0.5km), Indian Foot Wear (<0.5km), Shri Basaveshwara Provision Store (<... Shri Rudreshwara Provision Stores (<... Choice Footwear (<0.5km), Shanti Provision Store (<0.5km), Vasavi Vastralaya (<0.5km), Shri Shiva Textiles (<0.5km), My Fashions (<0.5km), Gulshan Footwear (<0.5km), Shri Madhura General Stores (<0.5km.. Tanmai Fashions (<0.5km), Amrin Foot World (<0.5km), Abs Trends (<0.5km), S. V. R Handlooms (<0.5km), Shi Krishna Stores (<0.5km), Bhadriah Textiles & Jewelers (<0.5km.. Shri Ganapathi Textiles and Jewelers ... Shri Shivananda Stores (<0.5km), Prashant Stores (<0.5km), B. S. Viswanathan Shetty & Sons (<0.... Aai Matha Textiles (<0.5km), Karnataka General Store (<0.5km), Hopcoms (<0.5km), Gayathri Textiles (<0.5km), Siddeshwara Provision Store (<0.5km.. Shubham Garments (<0.5km), Sangeetha Textiles (<0.5km), Nanjundeshwara Hall (<0.5km), Shri Ji Fashion (<0.5km), Venkateswara Provision Store (<0.5km Shri Ranganatha Store (<0.5km), The Girls Collection (<0.5km), Shri Nidhi Cloth and Jewellers (<0.5k... Shivalinaiah Provision Store (<0.5km), V. S. N. Footwear (<0.5km)

[more...](#)

## Locality Reviews

NelaMangala, Bangalore

Its very convenient place for people who are living west region of the state

### Pros:

- Convenient place
- Comfortable to travel to west side of state people

Posted: Nov 3, 2020 by Sowbhagya

Let me introduce myself, we are one of the leading Realtors / Consultant & also developers in Bangalore for Warehouses since two decades.

Nelamangala is a very prominent Location for Warehousing Industries as the major development in warehouses at Bangalore is Nelamangala. This Location having all Major industries as you name the company it's there, like eg.. E-Commerce, Major & small Logistics company along with all major company storage space.

Connectivity is Man NH 4 & labours available easily. As there are many small villages surrounding Nelamangala.

In today's warehouse market at Bangalore with all facilities available in lower rentals Nelamangala is the best for any company to have their warehouse for costing.

### Pros:

- Nelamangala is the Best Location in Bangalore for Warehousing.

### Cons:

- There are no Negative aspects in Nelamangala

Posted: Oct 22, 2020 by [Feroz Khan \(F 5 K Realty Bangalore\)](#)

Nelamangala are are very fast growing land/plots because it developing fast like colleges and industries looking this are so now invest the lank/plots future plan if you invest 50lac after 5 years 1cr land cost

### Pros:

- Now not at developed

### Cons:

- future it will developed

Posted: Sep 2, 2020 by Basavaraj raj

Well developed area. Good connectivity with airport just 30 min away.

### Pros:

- Well developed area
- Good connectivity

### Cons:

- Traffic congestion
- Far from the city

Posted: Apr 7, 2019 by [Chidanand G \(Global Builders And Developers\)](#)

Very Good Transport connectivity, and very good for employment opportunity zone

### Pros:

- Employment opportunity

### Cons:

- Railway connection problem

Posted: Oct 20, 2017 by Suresh G

NelaMangala is fast growing face of Bangalore due to NH4 and nice roads and one more main beneficiary is industrial area in NelaMangala and new APMC yard.

### Pros:

- Good location

Posted: Apr 24, 2016 by [Apoorva G \(Asare Land Developers\)](#)

NelaMangala is having Aashrayaa Meadows is 24 Acres Land Located near Dharmashri Resorts & BP Indian School. Bangalore is one of the most-sought after location in the Silicon Valley of India. We crafted plot size which suits you. We ensure that your home not only add value to your life but also becomes your most treasured asset Aashrayaa Meadows offers plots which are in size of 1200, 1500 and 2400 sqft.

An equal amount of attention to detail has gone into providing you top notch specifications and superb modern amenities.

**Pros:**

- *Fast developing industrial sector called greater Peenya*
- *Mumbai - Banglore Industrial corridor after Nelamangala causing potential residential suburbs*
- *Peaceful and away from traffic but next to major National highways*

**Cons:**

- *About 35km from Bangalore city*
- *Traffic near city entrance but very good roads*
- *Waiting time for good investment is 5 to 7 years*

Posted: Mar 10, 2016 by Ashok Ashoka

NelaMangala, Bangalore is rated 6 out of 10 based on 7 user reviews.

Disclaimer: The reviews are opinions of PropertyWala.com members, and not of PropertyWala.com.

Explore

[Similar Properties](#)

[Properties in NelaMangala, Bangalore](#)

[Projects in Bangalore](#)

[Brokers in Bangalore](#)

More Information

Report a problem with this listing

Is this property no longer available or has incorrect information?

[Report it!](#)

**Disclaimer:** All information is provided by advertisers and should be verified independently before entering into any transaction. You may visit the relevant RERA website of your state to verify the details of this property. PropertyWala.com is only an advertising platform to help connect buyers and sellers and is not a party to any transactions, nor shall be responsible or liable to resolve any disputes between them.