

4 Bedroom Apartment / Flat for sale in Godrej Tropical Isle, Sector 146, N.. 5.7 crores



Indulge In Unparalleled Luxury At GODREJ TROPICAL ISLE

Sector-146, Sector 146, Noida - 201310 (Uttar Pradesh)

- Project/Society: [Godrej Tropical Isle](#)
- Area: 3250 SqFeet ▾
- Bedrooms: Four
- Bathrooms: Four
- Floor: Tenth
- Total Floors: Twenty
- Facing: North East
- Furnished: Semi Furnished
- Transaction: New Property
- Price: 57,000,000
- Rate: 17,538 per SqFeet
- Age Of Construction: Under Construction
- Possession: Within 6 Months

Advertiser Details

**Prop-Keys Consulting**  
Subodh Semwal

Sector 90, Noida  
mob: 8054269729  
tel:  
mail:  
[www.propertywala.com/prop-keys-consulting](http://www.propertywala.com/prop-keys-consulting)

Scan QR code to get the contact info on your mobile  
[View all properties by Prop-Keys Consulting Pvt. Ltd.](#)

Description

Discover a world of opulence with our exquisite 3 & 4 BHK ultra-luxury homes, starting at just 2.99 crores onwards.

Project Highlights

- Experience the Grandeur of Ultra-Modern Double-Height Entrance Lobbies.
- Elevate Your Culinary Experience with a Modular Kitchen, VRV System, and Imported Marble Finishes.
- Immerse Yourself in the Uniqueness of a Themed Residential Project.
- Thrive in Proximity to the Upcoming International Cricket Stadium.
- Seamlessly Accessible - Only 30 Minutes from the Future Jewar Airport.
- Swiftly Connect to the Heart of the City with an 18-Minute Drive to Mahamaya Flyover.

When you call, please mention that you saw this ad on PropertyWala.com.

Features

General

- Power Back-up
- Lifts

Lot

- Balcony
- Park Facing

Exterior

- Reserved Parking
- Visitor Parking

Maintenance

- Maintenance Staff
- Rain Water Harvesting
- Waste Disposal

Security

- Security Guards
- Fire Alarm

Interior

- Woodwork
- Modular Kitchen
- Marble Flooring
- Feng Shui / Vaastu Compliant

Recreation

- Swimming Pool
- Park
- Fitness Centre / GYM
- Club / Community Center

Location

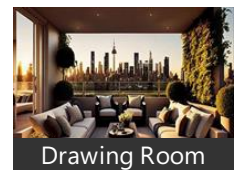
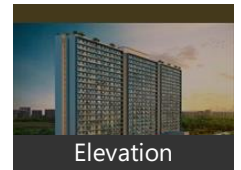
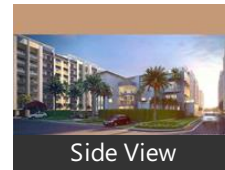
\* Location may be approximate

Landmarks

Nearby Localities

[Sector 162](#), [Sector 154](#), [Sector 153](#), [Sector 148](#), [Kambakshpur](#), [Sector 162](#), [Sector 154](#), [Sector 153](#), [Sector 148](#), [Kambakshpur](#), [Sector 162](#), [Sector 154](#), [Sector 153](#), [Sector 148](#), [Kambakshpur](#), [Sector 162](#), [Sector 154](#), [Sector 153](#)

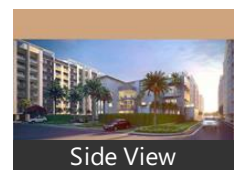
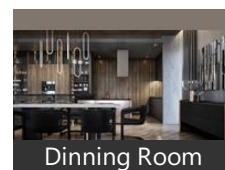
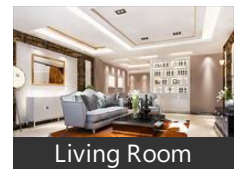
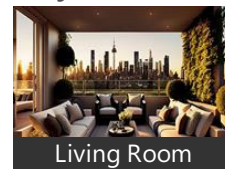
Pictures



Floor Plans



Project Pictures



\* These pictures are of the project and might not represent the property

Project Floor Plans

