

2 Bedroom Apartment / Flat for sale in Theog, Shimla

1.49 crore



2 Bedroom Apartment For Sale In Shimla

Taj Theog Shimla HP, Theog, Shimla - 171201 (Himachal Pradesh)

- Area: 1150 SqFeet ▾
- Bedrooms: Two
- Bathrooms: Two
- Floor: Second
- Total Floors: Six
- Facing: East
- Furnished: Semi Furnished
- Transaction: New Property
- Price: 14,900,000
- Rate: 12,957 per SqFeet **+10%**
- Age Of Construction: Under Construction
- Possession: Within 3 Months

Advertiser Details

Properties In Himachal

Sanjauli, Shimla

mob: 9218227122

tel:

mail:

www.propertiesinhimachal.com



Scan QR code to get the contact info on your mobile

[View all properties by Himachal Properties](#)

Description

2 Bedroom Apartment for Sale in Shimla

Project Details

- Freehold Property
- Guaranteed Rental
- Zero Maintenance Charges
- Bank Loan Available
- Secured Gated Township
- Club House Indoor Heated Pool Gym Co-Working Space Private On-site Parking
- High-quality elevators
- On-Call Butler Service
- 24/7 Power Backup
- Earthquake Resistant
- Advance Safety Systems
- Unobstructed Hill Top View Full Day Sunny Site Exclusive Membership of Taj Hotels and Resorts
- Adequate Water Supply
- World Class Facility Management

Connectivity with Project

- Mall Road - 30 km
- Naldehra Golf Course - 39 km
- Kufri 18 Km
- Shimla Airport - 47km Chandigarh Airport 142 km
- Hospital - 4 km

When you call, please mention that you saw this ad on PropertyWala.

Features

General

- Lifts
- Wi-Fi

Lot

- Balcony
- Corner Location

Exterior

- Reserved Parking
- Servant Quarter

Maintenance

- Maintenance Staff

Location

Security

- Security Guards
- Electronic Security

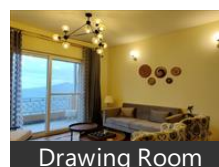
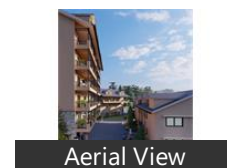
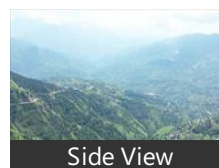
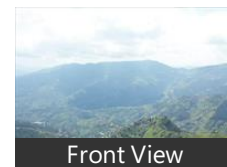
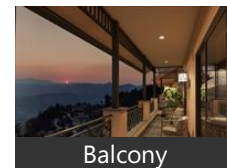
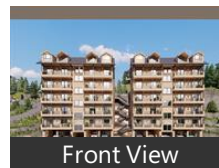
Interior

- Woodwork
- Modular Kitchen
- Wooden Flooring

Recreation

- Fitness Centre / GYM
- Club / Community Center

Pictures



* Location may be approximate

Landmarks

Hospitals & Clinics

Hospital (<1km), Hospital-ER (<1km), Civil Hospital-ER (<1km), Civil Hospital (<1km), Shivam Eye Care (<1km), Civil-ER (<1km), Civil (<1km), Shanti X-Ray Clinic (<1km), Durga Enterprises (<1km), Sanjivani Health Care Centre (<1km), Verma Clinic (<1km), Chauhan Homeopathic Clinic (<2km)

Public Transport

Rai Ghat Bus Stop (<1km), Theog Bus Stop (<1km), Himachal Path Parivahan Niqam Bus.. Nangal Devi Mod Bus Stop (<2km)

Restaurant & Shops

Arun Jewellers (<1km), Deepak Gen Store (<1km), Satish Brothers (<1km), Sharma Cloth House (<1km), Gajta Spintex Evam General Store (<1km), Mahesh General Store (<1km), Paramjeet General Store Naya Bazar (... Patangli (<1km), Sharma Machinery Store (<1km), True Gold Jewellers (<1km), Forever Collections Garment Showro... Crazy Hut Readymade Shawls (<1km.. Verma General Store (<1km), Takur General Store (<1km), Police Station Shali Bazar (<1km), Gupta General Store (<1km), Rahul Emporium (<1km), Chauhan Footwear (<1km), Ms Yashpal Hem Raj (<1km), Lucky Woolen House (<1km), Dashmesh Cloth Merchant (<1km), Sharma Fancey Store (<1km), Mahindra Boot House (<1km), Recharge Point Theog (<1km), Joshi Carpet and Metting Store (<1km JK Jewellers (<1km), Suman Watch (<1km), Bhram Nath Vijay Kumar (<1km), Akhil Gold Smith (<1km), Dogra Cloth House (<1km), Theog Gun House (<1km), Shiva Jewellers (<1km), Pavan Cloth House (<1km), GMS General Store (<1km), Choice Readymades (<1km), Golu Boot House (<1km), Tenzin General Store (<1km), Raj Fhal Avam Sabzi Vikreta (<1km), General Store (<1km), Panipat Haryana Handloom (<1km), Anshul Daily Needs Corner (<1km), Kamaksha Daily Needs General Store... S D Verma Gen. Store (<2km), Sarita General Store (<2km), R. S. Shoes (<2km), Tragopan (<3km), Sharma General Store (<4km), Verma Merchant

[more...](#)

ATM / Bank / Post office

Explore

[Similar Properties](#)

[Properties in Theog, Shimla](#)

[Projects in Shimla](#)

[Brokers in Shimla](#)

More Information

Report a problem with this listing

Is this property no longer available or has incorrect information?

[Report it!](#)

Disclaimer: All information is provided by advertisers and should be verified independently before entering into any transaction. You may visit the relevant RERA website of your state to verify the details of this property. PropertyWala.com is only an advertising platform to help connect buyers and sellers and is not a party to any transactions, nor shall be responsible or liable to resolve any disputes between them.