

## Triguna Ashwatha - Yelahanka, Bangalore



An ultimate reflection of the urban chic lifestyle

Triguna Ashwatha by Triguna Projects Pvt Ltd at Agrahara Badavane, Yelahanka in Bangalore offers residential project that host 2 bhk and 3 bhk apartment in various sizes.

- Project ID: J562111896
- Builder: Triguna Projects Pvt Ltd
- Location: Triguna Ashwatha, Agrahara Badavane, Yelahanka, Bangalore (Karnataka)
- Completion Date: Dec, 2019
- Status: Completed

### Description

**Triguna Ashwatha** offers beautiful 2 BHK and 3 BHK Apartments in Agrahara Badavane, Yelahanka, Bangalore. The size of the apartments may ranges from 876 to 1430 sqft. The project comprises of a wide array of amenities that include Landscaped Garden, CCTV Cameras, Swimming Pool, Gymnasium, Play Area etc. A ll the major utilities like schools, colleges, hospitals, super marts, parks and recreational centers are Nearby.

**RERA No :-** PR/KN/170823/001449

### Amenities:

- 24 X 7 Security
- CCTV
- Children's play area
- Gymnasium
- Intercom
- Jogging Track
- Landscaped Gardens
- Lift Available
- Party Hall
- Power Backup
- Rain Water Harvesting
- Spa/Sauna/Steam
- Swimming Pool
- Vaastu Compliant

**Triguna Projects Pvt Ltd** is a well-known Indian real estate company in India and is well known for its superior real estate services. The company continues to grow rapidly with its product diversity across various sectors and continues to be committed to quality and customer satisfaction. The builders have received instant recognition and have been able to deliver its projects with excellence and commitment to modern cutting edge design and technology. The company has won numerous awards and tied ups with best in class associates, has a group of experienced project management consultants and world renowned architects. All these factors combined ensures better execution and delivery of projects.

### Features

#### Luxury Features

- Power Back-up
- Lifts
- High Speed Internet

#### Lot Features

- Balcony
- Park Facing

#### Recreation

- Swimming Pool
- Park
- Fitness Centre / GYM
- Club / Community Center

#### Security Features

- Security Guards
- Intercom Facility

#### Exterior Features

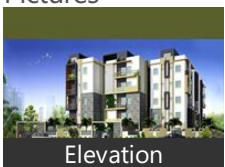
- Reserved Parking

#### Maintenance

- Maintenance Staff
- Rain Water Harvesting

### Gallery

#### Pictures



Elevation

### Floor Plans



Master Plan



Floor Plan A



Floor Plan B



Floor Plan C



Floor Plan D



Location Map

## Location

## Landmarks

### Hotel

Royal Orchid Resort & Convention C... Chairman, The Royale Senate-Hebbal (<10km), Ramanashree California Resort-Dodd.. Godrej Woodsman Estate (<7km), Liwa Hotel (<5km), The Sanctum Suites Bangalore (<13k... Roseline Suites (<11km), Maple Inn-Kempapura (<7km), Howard Johnson-Nagavara (<8km), MSR Hotel & Spa Bangalore (<13km), Hotel Nandhana Vista (<13km), Country Inn & Suites By Radisson Be... Howard Johnson by Wyndham Beng... Arra Suites (<10km)

### Public Transport

Yelahanka Railway Station (<4km), Hebbal (<9km), Hebbal Railway Station (<9km), Bel Circle (<12km), Banaswadi Railway Station (<14km), Nagavara (<9km), Mekhri Circle-NB (<13km), Bmtc Kalyannagar Bus Station (<11k... Nagashettyhalli B M T C Bus Station ... B M T C Bus Station-Sree Chowdeshw. Kodigehalli Railway Station (<8km), Vishwanath Nagenahalli-EB (<9km)

### Recreation

Manyata Embassy Business Park (<6k.. Lumbini Gardens (<8km), Palace Ground (<14km), PVR Cinemas-MSR Elements Mall (<... Decathlon Sports India (<12km), Pushpanjali-Sultanpalya (<11km), Naatyakalakshetra Academy for Fine... Hennur Banaswadi Cosmopolitan Cl...

### Business & Services

Kirloskar Business Park (<8km), Rail Wheel Factory-Main Gate (<6km... Bharat Electronics-Main Gate ■■■■!...

### Shopping Centre

MSR Regaliaa Elements Mall (<8km), Esteem Mall (<8km)

### Building

Orchid Woods (<6km), Sobha Chrysanthemum (<6km), Krishna Northwoods (<2km), Karle Town Centre (<7km), SLS Symphony (<6km), Vivek Marvel (<2km), Kemp Fort (<11km), Sobha City ■■■■ ■■■■ (<4km), Adithya Celestial (<5km), Prestige Wellington Park (<12km), R & S Riviera (<6km), R and S Riviera Bangalore (<6km), Railway Wheel Factory West Colony ... Eco Narasimha (<10km), Nagarjuna Meadows Phase-1 (<7km), Vamshi Residency (<7km), Crystal Enclave (<10km), VDB Celadon (<3km), Kalathoor House (<3km), Sobha Petunia (<8km), Sobha Emerald-2 (<3km), Manito Shelters (<11km), Oceanus Greendale (<13km), Kendriya Vihar (<3km), Hoppers Stop (<4km)

### ATM/Bank/Exchange

City Union Bank-Yelahanka New Tow. State Bank of India (<7km), Canara Bank (<7km), Bank of Baroda-Defence Colony (<7k.. Uco Bank (<7km), South Indian Bank (<10km), State Bank of India-R A C P C Banasa...

### Restaurant & Shops

Reliance Fresh (<5km), Five Star Chicken (<5km), Bda Complex (<14km), Patels Inn (<12km), Lulu Value Mart (<7km), Basaveshwar Bharat Gas Agency-Bha..

### Hospitals & Clinics

Columbia Asia Hospital-ER (<8km), Yelhanka Govt Hospital (<4km), MS Ramaiah Memorial Hospital-ER (...)

Dr Ambedkar Medical College Hosp ... DR. Agarwal, Sham, MS Ramaiah Memorial Hospital (<12..  
cloudnine clinic (<6km), Orthopaedic Clinic (<12km), Dr Lal PathLabs (<7km), Specialist Hospital (<12km),  
M S Ramaiah Medical Hosp (<13km), Dr B R Ambedkar Medical & Hospita... M S Ramaiah Hospital (<12km),  
Chaitanya Hospital (<11km), Shushrushi Nursing Home (<3km), Government Public Hospital (<4km),  
Manipal Ankur (<9km)

#### Accommodation

Club Cabana (<8km)

#### Educational Facility

Vidyashilp Academy (<4km)

\* All distances are approximate

## Properties

## Triguna Ashwatha News

## Expert Reviews on Triguna Ashwatha

### Explore

[Projects in Bangalore](#)

[Brokers in Bangalore](#)

### More Information

### Report a problem with this listing

Is any information on this page outdated or incorrect?

[Report it!](#)

**Disclaimer:** All information is provided by advertisers, including builders/agents/owners, or collected from publicly available sources and may not be verified under RERA. Any information provided on this website, including facts and figures, should be verified independently, including via the relevant RERA website, before entering into any transaction. PropertyWala.com is only an advertising platform to help connect buyers and sellers and is not a party to any transaction, nor shall be responsible or liable to resolve any disputes between them.

[Home](#) » [Bangalore Real Estate](#) » [Projects in Bangalore](#) » [Triguna Ashwatha - Yelahanka, Bangalore](#)