

# 4 Bedroom Apartment / Flat for sale in Godrej Palm Retreat, Sector 150, N 3.7 crores



Godrej Palm Retreat Noida — Discover Lavish Layouts With Unmatched Facilities.

Godrej Palm Retreat, Sec 150, Noida, Sector 150, Noida ...

- Project/Society: [Godrej Palm Retreat](#)
- Area: 2700 SqFeet ▾
- Bathrooms: Four
- Total Floors: Eighteen
- Furnished: Semi Furnished
- Price: 37,045,000
- Rate: 13,720 per SqFeet **+15%**
- Age Of Construction: 1 Years
- Possession: Immediate/Ready to move
- Bedrooms: Four
- Floor: Second
- Facing: North East
- Transaction: New Property

## Description

Located on Pusta Road, Noida Sector 150, the greenest sector of Noida, Godrej Palm Retreat offers 430 'Resort Residences' for the chosen few. With world-class amenities at your disposal, submerge in a lifestyle that makes you feel that you are on a lifelong vacation. Designed by Godrej Properties, one of the most trusted real estate brands, the project is under construction. The project was launched in September 2019 and will be available for possession from June 2025. Godrej Palm Retreat brings low-rise, resort-styled homes to ensure low-density quality living with honest indulgences.

When you contact, don't forget to mention that you found this ad on PropertyWala.com.

## Location

\* Location may be approximate

## Landmarks

Nearby Localities

[Sector 152](#)

\* All distances are approximate

## Locality Reviews

Sector 150, Noida

It is a fine piece of property with potential in near future as per the Noida sector 150 plan.

**Pros:**

- *Connectivity with Delhi NCR*

**Cons:**

- *NONE*

Posted: Nov 14, 2020 by Deepu Bamzai

Sector-150, Noida Expressway is an upcoming prime location as a residential cum corporate hub. Sector-150 Noida Expressway has been declared as a smart sector & is also a special economic zone, this sector is quite close to Pari Chowk, Night safari, Gautam Budh university, formula 1 & Yamuna Expressway. Sector-150 at Noida Expressway enjoys an added advantage as the proposed metro station at sector-149 is quite close, quick,easy connectivity via Noida Expressway adds to the advantage of this upcoming prime location.

**Pros:**

- *Quick and easy connectivity*

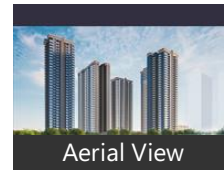
## Advertiser Details

**FAV Consulting Services**  
Shweta Mishra  
Agent

Sector 1, Noida  
mob: 7053593369  
tel: +91-124-4249600  
mail: maira\_vatika2014@gmail.com  
propertywala.com/fav-consulting-services

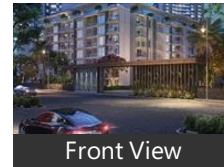
Scan QR code to get the contact info on your mobile  
[View all properties by FAV Consulting Services](#)

## Pictures

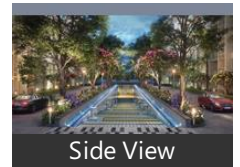


Aerial View

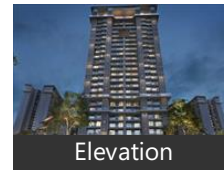
## Project Pictures



Front View



Side View



Elevation

\* These pictures are of the project and might not represent the property

## Project Floor Plans



Location Map



Master Plan



Floor Plan A



Floor Plan B

\* These floor plans are of the project and might not represent the property

- *Smart sector*
- *Corporate cum residential sector*

Posted: Apr 24, 2015 by [Plots Sale \(Balaji Properties Mayur Vihar\)](#)

Sector 150, Noida is rated 8 out of 10 based on 2 user reviews.

Disclaimer: The reviews are opinions of PropertyWala.com members, and not of PropertyWala.com.

### Explore

[Similar Properties](#)

[Properties in Sector 150, Noida](#)

[Projects in Noida](#)

[Brokers in Noida](#)

### More Information

### Report a problem with this listing

Is this property no longer available or has incorrect information?

[Report it!](#)

**Disclaimer:** All information is provided by advertisers and should be verified independently before entering into any transaction. You may visit the relevant RERA website of your state to verify the details of this property. PropertyWala.com is only an advertising platform to help connect buyers and sellers and is not a party to any transactions, nor shall be responsible or liable to resolve any disputes between them.