

Eiffel Vivassa - Bagiamau, Lucknow



Spacious Apartments with Luxury Features

Eiffel Vivassa is presented by Eiffel Infra Developers at Sultanpur Road, Bagiamau, Pune offers residential project that hosts 2, 3 & 4 BHK apartment with good features

- Project ID: J414801190
- Builder: Eiffel Infra Developers
- Location: Eiffel Vivassa, Sultanpur Road, Bagiamau, Lucknow - 226010 (Uttar Pradesh)
- Completion Date: Mar, 2024
- Status: Started

Description

Eiffel Vivassa by Eiffel Infra Developers located at Bagiamau, Sultanpur Road. The project is spread over 1400.00 sq.ft. - 2945.00 sq.ft. comprising of 2, 3 and 4 bhk apartments. The project is equipped with key amenities including swimming pool, children's play area, gymnasium, indoor games, tennis court etc & well connected with other parts of city and has all the basic utilities nearby.

RERA ID : UPRERAPRJ669500

Amenities:

- Swimming Pool
- Indoor Game Room
- Children Play Area
- Gym
- Gated Community
- Power Backup
- Badminton Court
- Sewage Treatment Plant
- Tennis Court
- Library
- Cycling & Jogging Track
- Rainwater Harvesting
- Landscaped Garden
- Lift
- 24x7 Security
- Fire Fighting Systems

Eiffel Infra Developers is a premier real estate company in Lucknow with its main focus on providing projects with the highest standards of quality. The company aims to consistently make great strides in fulfilling the dreams of a large number of esteemed customers. It is armed with a team of talented professionals who are very knowledgeable and proficient in the real estate sector and are always ready to deliver more than what has been asked for.

Features

Security Features

- Security Guards ■ Electronic Security
- Intercom Facility ■ Fire Alarm

Interior Features

- Modular Kitchen ■ Feng Shui / Vaastu Compliant

Recreation

- Swimming Pool ■ Park ■ Fitness Centre / GYM
- Club / Community Center

General

- Power Back-up ■ Centrally Air Conditioned
- Room AC

Lot Features

- Balcony ■ Corner Location

Exterior Features

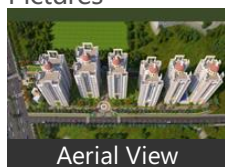
- Reserved Parking ■ Visitor Parking

Maintenance

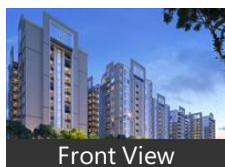
- Water Supply / Storage ■ Rain Water Harvesting

Gallery

Pictures



Aerial View



Front View



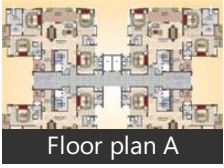
Main Entrance



Side View



Floor Plans



Location

Landmarks

Recreation

Lucknow Zoo Logical (<13km), Janeshwar Mishra Park (<8km), Dr Ram Manohar Lohiya Park-Gate N.. Wave Cinemas (<12km), Dilkusha Garden (<10km), Sant Gadge Ji Maharaj Prekshagreh (... Om Sports (<13km), New Laxman Park-Nisadganj (<14km.. Viram Khand Park 2 (<8km), Ambedkar Park (<9km), SRS Cinemas (<9km), Tejnarayan Park-Vishal Khand 1 Gom.. Ekta Park (<9km)

Hotel

Collection O 30052 Chinmay Resort (... The Grand JBR Hotel (<8km), Oyo 6242 Jalsa Resort (<4km), Hotel Lineage (<8km), Mariott International-Renaissance Ho. Tekarees Inn-Prem Nagar (<14km), Hotel Awadh International-Indira Na... Jai Mata Durga Hotel-Gomti Nagar (<.

Shopping Centre

City Mall (<9km), City Mall-Gate No 1 (<9km), Riverside Mall (<11km), Bangla Bazar (<14km), Nilgiri Complex (<13km), Fun Republic Mall-Gate No 2 (<12km)

Restaurant & Shops

THE MOBILE STORE (<10km), Vodafone Store (<10km), Neelkanth Sweets (<10km), Vishal Mega Mart (<9km), Best Price (<3km), Airtel Store (<9km), Apps Store (<9km), Westside (<12km), Airtel (<9km), khadims (<14km), Samsung Mobile Service Centre (<14.. Big Bazaar (<11km), Digital Zone (<12km), Reliance Digital (<12km), Cafe Coffee Day (<14km), Chappan Bhog (<12km), Reliance Mobile Store (<13km), Parking-Hardik Hotel (<13km), Shanu Gift & Crockery House (<8km), HP Service Centre (<14km), Metropolitan Club (<8km), Easy Day (<8km), Nokia (<14km), Sai Gift Centre (<8km), R C Gift Centre (<8km), MR Brown (<9km), Universal Books (<9km), Shri Ghandi Ashram Khadi Gramudyo. Modern Mobile (<9km), Archies Gallery (<9km), Sahu Agencies (<9km)

Public Transport

Gomti Nagar Railway Station (<10km.. Gomit Nagar Railway Station (<10km.. Gomti Nagar Railway Station Gate No. Anupganj Railway Station (<12km), Malhaur Railway Station (<9km), Utraitia Railway Station (<9km)

ATM/Bank/Exchange

Punjab National Bank (<10km), Uco Bank-Gomti Nagar (<9km), Idbi Bank-Gomti Nagar (<10km), Union Bank of India (<10km), Axis Bank (<11km), Bank Of Baroda-Chinhhat (<13km), Bank of India (<9km), Bank of Baroda (<9km), Central Bank of India (<9km)

Hospitals & Clinics

Shekhar Hospital (<13km), Forrd Hospital & Blood Bank-ER (<9k.. Dr op Chaudhary Hospital (<12km), Sahara Hospital-Gate 4 (<8km), Mayo Medical Centre (<9km), DR. Ram Manohar Lohia Institute of ... DR. Ram Manohar Lohia Institute of ... Lal Pathology Lab (<12km), Rapid Pathology (<12km), DR. Abir Saraswat (<13km), Sahara Hospital-Gate 3 (<8km), Govind Hospital & Research Center (... Prakash Netra Kendra (<9km), Atlas Hospital (<9km)

Business & Services

Indira Gandhi Pratishthan (<11km), Hotel Charans International (<14km), Hindustan Aeronautics (<13km), Bahukhandi Mantri Awas (<12km), Shakti Bhawan (<13km)

Building

River View Enclave (<7km), Alaknanda Apartments (<6km), Kalindi Ville (<12km), Kasmanda Regent Apartment (<13km. Vikas Khand (<8km)

Other features

City, Lucknow. (<14km)

Town or Village

LEELA CINEMA-HAZRATGANJ (<14k...

Taxi Stand

Taxi Stand-Polytechnic Chauraha (<1..

Post Office

GPO Hazratganj

* All distances are approximate

Properties

Eiffel Vivassa News

Expert Reviews on Eiffel Vivassa

Explore

[Projects in Lucknow](#)

[Brokers in Lucknow](#)

More Information

Report a problem with this listing

Is any information on this page outdated or incorrect?

[Report it!](#)

Disclaimer: All information is provided by advertisers, including builders/agents/owners, or collected from publicly available sources and may not be verified under RERA. Any information provided on this website, including facts and figures, should be verified independently, including via the relevant RERA website, before entering into any transaction. PropertyWala.com is only an advertising platform to help connect buyers and sellers and is not a party to any transaction, nor shall be responsible or liable to resolve any disputes between them.