

2 Bedroom Apartment / Flat for sale in Parel, Mumbai

3.25 crores



2 Bedroom Apartment For Sale In Mumbai

Ruparel Jewel, Parel, Mumbai - 400012 (Maharashtra)

- Project/Society: Ruparel Jewel
- Area: 888 SqFeet ▾ ■ Bedrooms: Two
- Transaction: New Property ■ Price: 32,500,000
- Rate: 36,599 per SqFeet **-15%**
- Possession: Immediate/Ready to move

Advertiser Details



Amrik Singh Grover

Sion, Mumbai

Mob: 9867648942

tel:

mail: groveramrik22@gmail.com



www.propertywala.com/ask-realtors-mumbai

Scan QR code to get the contact info on your mobile

[View all properties by Ask Realtors](#)

Description

Parel in Mumbai is an area that has many elite residing and gives a sense of extravagance to all those staying there. Aptly named, Ruparel Jewel, Parel - Mumbai offers you 2 flats that are like jewels in a jewellery shop. The project is developed by Ruparel Realty, Parel - Mumbai, which is a much-respected name in the real estate business.

When you call, don't forget to mention that you found this ad on PropertyWala.com.

Features

Other features

- Power Back Up ■ Lift ■ Rain Water Harvesting
- Club House ■ Swimming Pool ■ Gymnasium
- Park ■ Reserved Parking ■ Security ■ Water Storage
- Vaastu Compliant ■ Service/Goods Lift
- Air Conditioned ■ Visitor Parking ■ Intercom Facility
- Maintenance Staff ■ Waste Disposal
- Internet/Wi-Fi Connectivity ■ RO Water System
- Banquet Hall ■ Cafeteria/Food Court ■ Piped Gas
- Jogging and Strolling Track ■ Bank & ATM
- Event Space & Amphitheatre ■ Flower Gardens ■
- Meditation Area ■ Multipurpose Courts
- Fire Fighting Equipment

Location

* Location may be approximate

Landmarks

Nearby Localities

[Lalbaug](#), [Tilak Nagar](#), [Sewri](#), [Dadar East](#), [Lower Parel](#), [Byculla](#), [Dadar West](#), [Manor](#), [Worli](#), [Dockyard Road](#)

* All distances are approximate

Locality Reviews

Parel, Mumbai

Parel is centrally located. All facilities available. All banks and big hospitals are nearby.

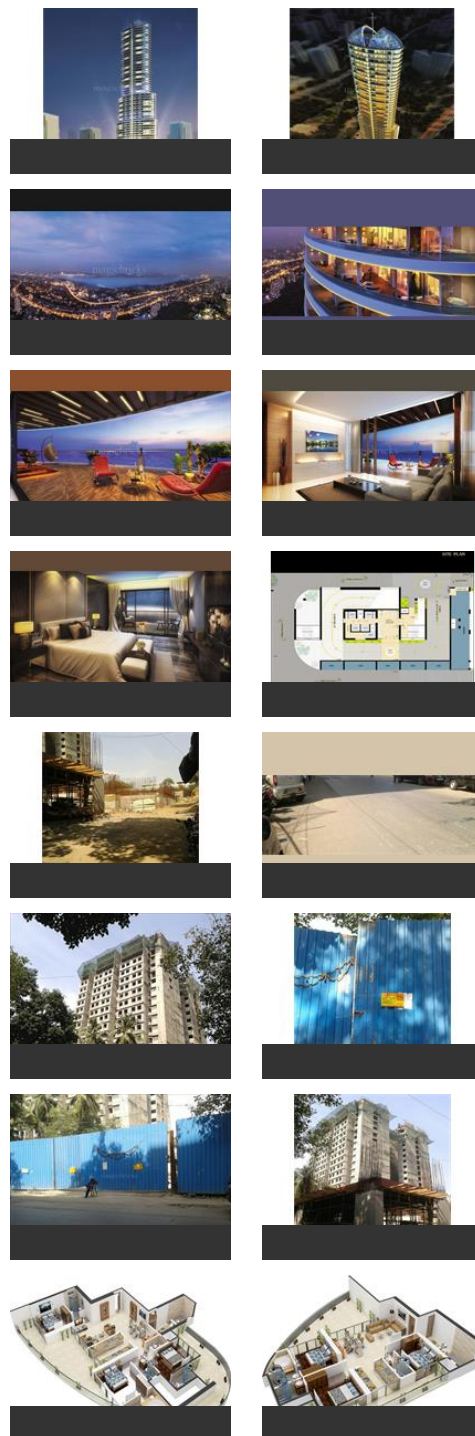
Pros:

- All banks available
- Major hospitals nearby

Posted: Apr 17, 2016 by Jaywant Kaskar

Parel has become a residential hub, as it is close by to Lower Parel which is now declared as a commercial hub, Its a locality with good accessibility with less traffic. The factory outlets, malls, multiplex, hospital, schools

Pictures



all are at a walkable distance which makes it a comfort zonal locality. Keeping all this in mind, All the leading developers have come here with their projects like kalpataru, Ashoka-Peninsula, PIRAMAL, Anchor, L&T & many more..

Pros:

- Good Location
- A silent and open space,
- Good accessibility

Posted: Dec 12, 2015 by [Abhishek Chopra \(Remax Sun Realtors\)](#)

Parel is a very well connected centrally located areas of Mumbai, there is a very recent demand in the market for properties in and around Parel with good Factory outlet shopping area.

Pros:

- Very good connectivity
- Low traffic area
- Centrally Located

Cons:

- Near to Income Tax office
- More of Corporate based business zone

Posted: Jun 10, 2015 by Chirag j

Parel is an upcoming Business Hub. Surrounded by Hospitals. Connected by railways and public transport.

Pros:

- Major Playing Grounds for children & elders.
- Best Location

Cons:

- Overly Crowded at Peak Hours.

Posted: Apr 13, 2015 by Sagar Dedhia

A center of connectivity to almost all places. Parel is very well located one of the fastest developing neighborhoods at Mumbai. This area was dominated by textile mills near by Ashok Towers one of the tallest buildings in Mumbai.

Pros:

- Availability of good shopping centers, stores, cinema halls, schools
- Well Planned Area
- Well Connected with City

Posted: Jan 23, 2014 by [Rizwan Shaikh \(Mumbai Blocks\)](#)

Parel is a sweet spot in the Mumbai city. This place is enclosed by the western and central railways on its west and the Harbour railways on its eastern side. All the three railways are easily accessible from Parel and also the new mono rail cuts across this place. Many newcomers to Aamchi Mumbai mistake Parel to "Lower Parel" (Lower Parel is a different station on western railway line) and many also call this as "Upper Parel"! Parel has a representing station called 'Elphinstone' on the western line and 'Parel' on the central railway line. Both these stations are connected internally and many wise people use these stations to move across from western to Central and vice versa to avoid the ever crowded Dadar station.

Brief history on Parel -- Parel has been a bustling place since the time I grew up here in the 70s. Earlier many of the vast landscapes were primarily consisted of mills and chawls of the laborers working in these mills. From the beginning of this decade the land scape and the sky line of Parel has changed boasting many prominent residential complexes, 5 star hotels and so on.

Parel is also known for various govt / municipal hospitals & med colleges acclaimed for serving people from all back grounds across the Asian continent. Hospitals like KEM (King Edward Memorial hospital), Wadia (maternity, for children) , Tata Memorial (prominently for cancer research and cure) , and few others are here since decades. Parel also boasted an independent shopping plaza since the 80s where in we could go and pick and choose items we want from the shelves using a basket / shopping cart . This place is called 'Apna Bazar' and has been run on a cooperative basis many years before the mall culture hit India. Almost every thing in one place for a middle class family is available . Parel also has a famous football maidan called St Xaviers football ground. A court (for legal matters) and couple of huge grounds are other attractions / land marks of Parel.

Pros:

- Connectivity, at the centre from almost all places in Mumbai.
- Several hospitals and railway stations nearby.
- Many prominent residential complexes, 5 star hotels and so on.

Cons:

- Lot of construction going on (mono rail , new buildings and so on).

Posted: Apr 18, 2013 by Siddhivinayak N

Parel, Mumbai is rated 8 out of 10 based on 6 user reviews.

Disclaimer: The reviews are opinions of PropertyWala.com members, and not of PropertyWala.com.



Explore

- [Similar Properties](#)
- [Properties in Parel, Mumbai](#)
- [Projects in Mumbai](#)
- [Brokers in Mumbai](#)

More Information

Report a problem with this listing

Is this property no longer available or has incorrect information?

[Report it!](#)

Disclaimer: All information is provided by advertisers and should be verified independently before entering into any transaction. You may visit the relevant RERA website of your state to verify the details of this property. PropertyWala.com is only an advertising platform to help connect buyers and sellers and is not a party to any transactions, nor shall be responsible or liable to resolve any disputes between them.